

VOLUME 65 NUMBER 62

MARCH 8, 2025

THE KWAJALEIN HOURGLASS



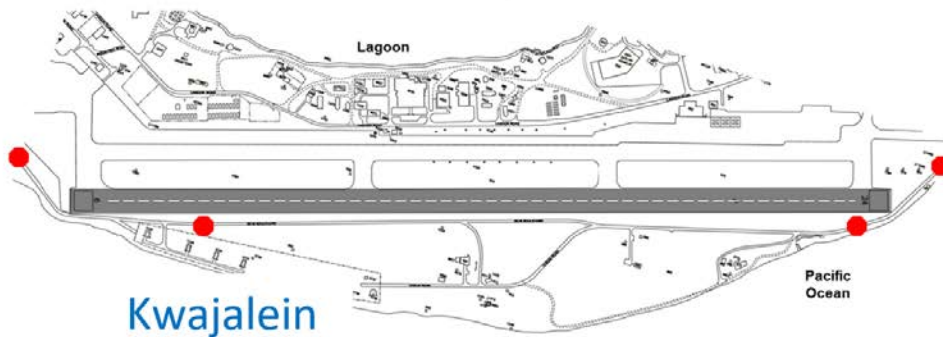


KWAJALEIN & ROI NAMUR, STOP FOR AIRCRAFT!!

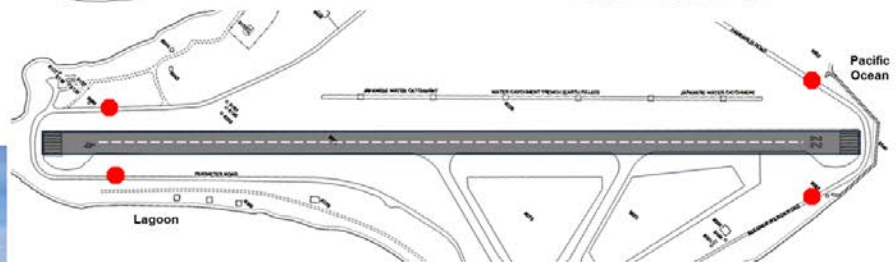


Please remember to stop and look both ways for aircraft on:
Zeus Blvd., Ocean Rd., Perimeter Rd., Pandanus Rd., Eleanor
Wilson Rd.

**If aircraft are on approach or taking off, you must hold your
position and wait!**



Roi Namur



**Stop at designated signs and look for aircraft
landing or taking off. If you see an aircraft, hold
your position at the stop sign and wait until the
aircraft has landed or departed before moving.**



THE KWAJALEIN HOURGLASS

The Kwajalein Hourglass is named for the insignia of the U.S. Army's 7th Infantry Division, which liberated the island from the forces of Imperial Japan on Feb. 4, 1944. The Kwajalein Hourglass is an authorized publication for military personnel, federal employees, contractor workers and their families assigned to U.S. Army Garrison-Kwajalein Atoll.

EARN YOUR TEAM KWAJ TAB!

Contents of the Hourglass are not necessarily official views of, or endorsed by, the U.S. Government, Department of Defense, Department of the Army or USAG-KA. It is published Saturdays in accordance with Army Regulation 360-1.
Phone: Defense Switching Network: 315-480-5169
Local phone: 480-5169

Garrison Commander.....Col. Drew Morgan
Garrison CSM.....Command Sgt. Maj. Ernest Miller
Public Affairs Officer.....Sherman Hogue
Editor.....Muhammad Rasheed
Communications Specialist.....Stephen Elson
Media Capture.....Melissa Dethlefsen
Reporter.....Christy Wagon



PHOTOS BY MELISSA DETHLEFSEN

COMMUNITY DOG DAYS ON KWAJ

HOURLASS REPORT

By Christy Wagon, CYS
Deputy Director

Kwajalein is a big move for anyone, but especially if you want to bring your best dog friend along. There are a lot of hoops to jump through to get a dog out to Kwajalein; minimum age of 6 months, spayed/neutered, current vaccinations, pass required blood and fecal tests, a health certificate, and be approved for travel. Dogs are also only allowed in family housing and must be on a leash unless in the owner's home or fenced yard or at the dog park.

That begs the question,

is it worth it? Grace Hood, parent of Willow, said "Yes! It's worth it! She makes me get out and do things." Most dog parents agree that their daily steps are increased due to having a dog on island. Chaplain Mike Klein likes to take his dog Talia to dog beach to sniff around on the reef at low tide. Research confirms that owning a dog can improve your physical and mental health as they encourage us to be more active and help reduce stress, anxiety, and depression.

There are some challenges to having a dog on a remote island. Although Kwajalein does have a regular vet tech on

island, a veterinarian comes out a few times a year. This means that Kwajalein may not be the best fit for older dogs-with-dogs with health problems. If your dog requires a special diet, you may have to arrange to have that food shipped in since there is limited food and treats available on Kwaj. Kwajalein does not have boarding facilities, so it is important to think ahead and plan a dog sitter before you plan a vacation.

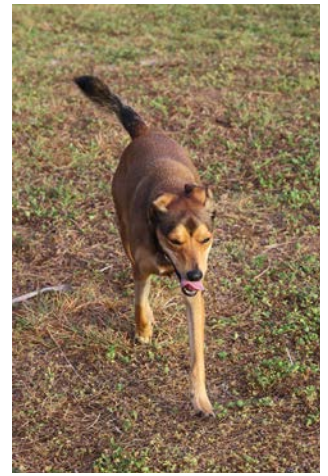
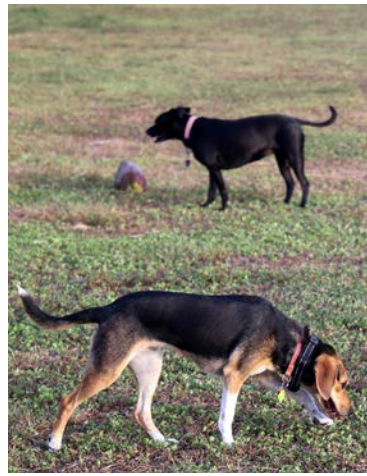
Dogs are fantastic for helping their owners make social connections. Taking your dog to the dog park on the lagoon side of the island, near the ski steps, is a wonderful oppor-

tunity for your furry friend to burn off some energy playing fetch or socializing with other dogs. The park is fully fenced, equipped with benches and trash cans, though you should bring your own doggie bags for clean-up.

Additionally, the dog park is a great place to meet fellow dog parents and make new friends. In fact, a group of people who met at the dog park now meets up almost daily and has even started diving together. It's a testament to how dogs can bring people together! 🐾



PHOTOS BY MELISSA DETHLEFSEN



PHOTOS BY MELISSA DETHLEFSEN



PHOTOS BY MELISSA DETHLEFSEN

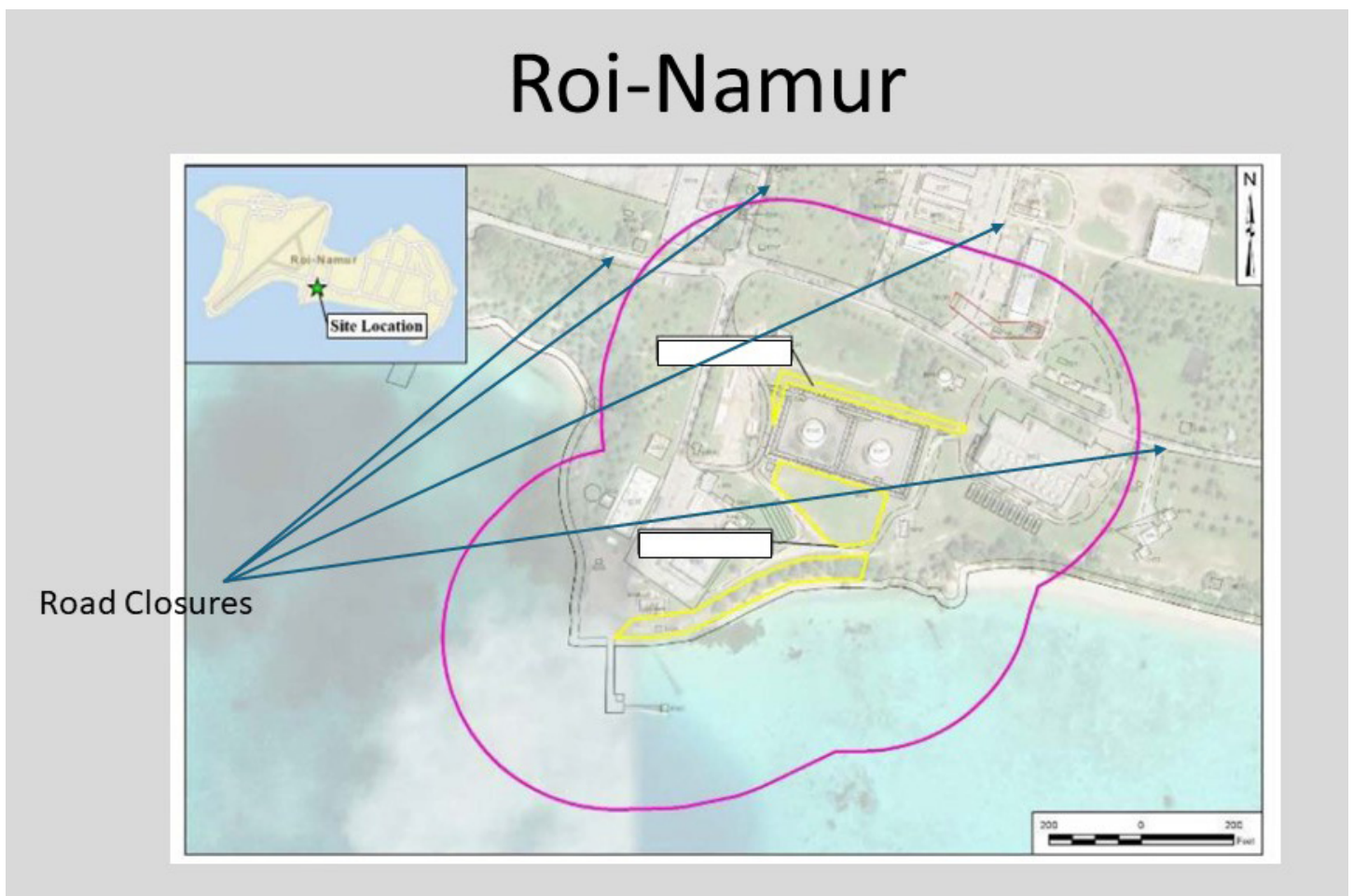


UXO CLEARING FOR CONSTRUCTION SUPPORT

On Roi-Namur Beginning 21 February Operations will be conducted at night from 2000-0430 Monday-Friday The following maps show Road Closures, Exclusion Zones, & Operations Overview

Roi-Namur POL/AST

- Construction operations anticipated to start 21 February
- Operations will be conducted at night from 2000-0430 Monday-Friday
- UXO Techs will conduct clearance operations in identified areas
- Barricades will be placed to signal all pedestrians and vehicles to use alternate routes
- Please avoid traveling or traversing in the indicated areas without a UXO Escort





LEGEND

- Telecom Route
- Telecom Manhole
- Road Close
- ↔ Detour

CONSTRUCTION NOTICE

FY21 KWAJALEIN ARMY FAMILY HOUSING CONSTRUCTION

Nan, Inc. construction company, will be continuing telecommunication construction activities for the FY21 Kwajalein Army Family Housing project as highlighted in blue on the attached map.

Trench excavation activities will start at the Building 806 across the road going to TMH-21 as shown in red. It will still be passable during daytime and **full road close at night** from 1900 to 0400 projected start date March 16, 2025.

Nan, Inc. will secure the area with barriers, safety signage and road plates. Traffic control personnel will be on-site to manage the flow of traffic and ensure safety for both workers and the public.

For inquiries, please contact the project team at 480-2548. Nan, Inc. appreciates the support and cooperation of the community for this transformative construction project.

Mahalo,

Nan, Inc.



COMMUNITY IN WITH THE NEW: THE KWAJ TV RELAUNCH

HOURLASS REPORT

Welcome to the future!

Gone are the primitive times when our Kwajalein residents had to wait from 4-8 hours for their desired *Kwaj TV* television programming—impossible to schedule in an exact time slot—to make its way back around inside of a Windows Media Player loop. Our new upgrades now allow your friendly island community Audio Visual team to precisely place specific programs into prime-time slots.

Why *Kwaj TV*? A great question in these technolog-

ical modern times when access to every conceivable type of media device lays right at our customer's fingertips. The answer is as quaint as it is refreshingly practical in its simplicity: *Kwaj TV* has an inherently empathetic focus on our own local community here on the Kwajalein Atoll. Functioning as a one-stop shop for the full folio of island culture, with episodes of the *Kwaj Current*, archived Window On The Atoll, special features and Public Service Announcements, *Kwaj TV* helps cultivate in an informed viewership a sense of home. Now we can do so

much more effectively than ever before, with the tools that enable our product to stand up next to even the big four commercial broadcast television channels, at least as far as ease-of-use.

Found on 20-2 on your tv dial, *Kwaj TV* upgrades provide an increase in programming variety, a crawl feature with emergency local information, a 'bug' branding feature with the logo watermark in the lower-right corner of your screen, and now nine chances to catch the latest five *Kwaj Current* episodes, as opposed to the previous one

or two chances per day.

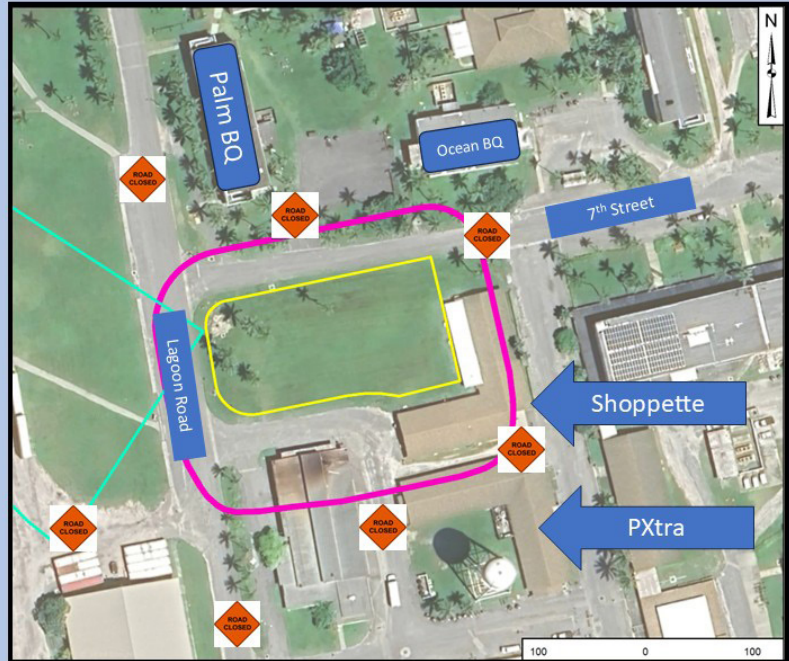
Latest Kwaj Current Episodes		
6am	11am	6pm
7am	12pm	7pm
8am	1pm	8pm

Also included are classic movies played after midnight and as always—no commercials!

So, do yourself a favor and check out the all-new *Kwaj TV* for a delightful treat, and don't be shy. Go ahead and let us know what you think. We are always open to creative ways to improve our product just for you. ▴

Public Notice – UXO Clearance Operations

- The following facilities must be vacated NLT 1900 each night Monday-Friday 17 Jan thru 17 May
 - Shoppette – Building 774
 - PXtra– Building 729
- Palm BQ residents should only use the Northern entry/exit doors
- Ocean BQ residents should only use the Eastern entry/exit doors



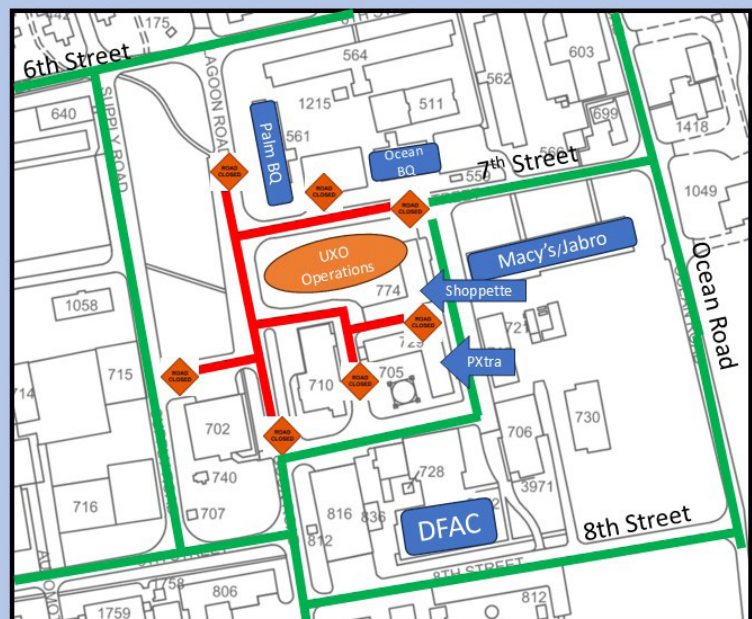
UNEXPLODED ORDNANCE

UXO

KEEP OUT

Road Closures

- **Do not cross any barriers. If the barriers remain up after 0400, do not cross.**
- UXO Clearance Operations are ongoing in the area overnight
- Lagoon Road and 7th Street adjacent as shown will be closed
- Roads in red will be closed each night Monday-Friday 17 Jan thru 17 May
- Roads will be closed from 1900 - 0400
- Ocean road is unaffected
- Any questions reach out to Mike Flinchbaugh at 480-4255



Presented by



VARIETY SHOW

Everyone is invited to watch!

**Sunday, March 30
6 P.M. - MP Room**

Social Hour:
Popcorn
5 - 5:55 P.M.



**All proceeds from donations
will go to sponsoring students
in Ebeye to attend school.**

Power Outage Notice



March 21st 0630 to 1730 (approx. 10 hrs)

March 22nd 0630 to 1730 (approx. 11 hrs)

March 23rd 0630 to 1730 (approx. 11 hrs)

E-wareness: Vehicle Leaks

Contact Environmental at 480-0722 for information.

It is the driver's responsibility to ensure that the vehicle he/she is driving is not leaking any fluids and is maintained in good condition. If leaks are observed:



- Stop the vehicle in a safe location and place absorbent under the leak.
- Call 911 to report the leak.
- Isolate leak to protect storm drains and waterways.
- Perform leak clean-up and reporting in accordance with site procedures.

Ej an rittor eo eddo nan lolojake bwe wa eo ej ettor kake enjab ettal ak lutoklok oil jen e. Ne enaj wor ettal:

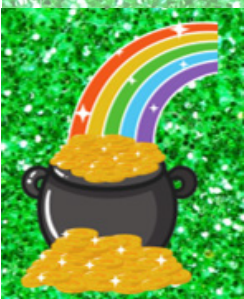
- Kabojrak wa eo ilo juon jikin eo ekkar nan bojrak ie im illik absorbent/matmat ko umin ijo ej ettal.
- Kiir 911 non ripoot e ettal eo kwoj loe.
- Kattolok ijo ej ettal nan bobrae storm drainout ko im dren ko.
- Karreoik ijo eo ej ettal im komane repoot eo ekkar nan wawein kommani ilo jikin jermal eo.

Join us for a
Shamrockin' Good Time
at our St. Patrick's Day Party!



MARCH 16th 8:00 P.M. @ The Oceanview

Wear your best green attire and get
ready for a night of fun, laughter,
and a wee bit of Irish magic.





PHOTOS BY MELISSA DETHLEFSEN

COMMUNITY THE ART SHOW

HOURLASS REPORT

By Christy Wagnon, CYS Deputy Director

On Saturday, March 1st, the Kwajalein Art Guild and Yokwe Yuk Welcome Club hosted the Second Annual Art Show at the base commander's residence. This fundraising event aimed to showcase the talents of local artists in both visual and performing arts, while raising funds to support education in the Marshall Islands and Micronesia, as well as promoting the arts within the community.

The art on display was diverse, featuring everything from photography to ceramics from drawings to stained glass. Lori Krueger, famous for her sea glass Christmas trees showed a sea glass lighthouse. Tatianna Way started painting when she moved to Kwajalein by

painting buoys. Way's medium is acrylic paint on canvas from digital photos and she presented a Doberman and ahi tuna. Way enjoys this medium because of the bold brush strokes and striking images.

Alongside the visual art, a talented group of classical musicians performed throughout the evening, showcasing a variety of instruments including the piano, saxophone, French horn, guitar, and violin. Kwajalein is home to many incredibly skilled musicians, and we are thankful to them for sharing their talents with the community.

The annual art show adds a touch of sophistication to Kwajalein while supporting a meaningful cause. A heartfelt thank you to everyone who contributed their artwork, as well as those who joined us to enjoy the evening.



PHOTOS BY MELISSA DETHLEFSEN



PHOTOS BY
MELISSA DETHLEFSEN



PHOTOS BY
MELISSA DETHLEFSEN



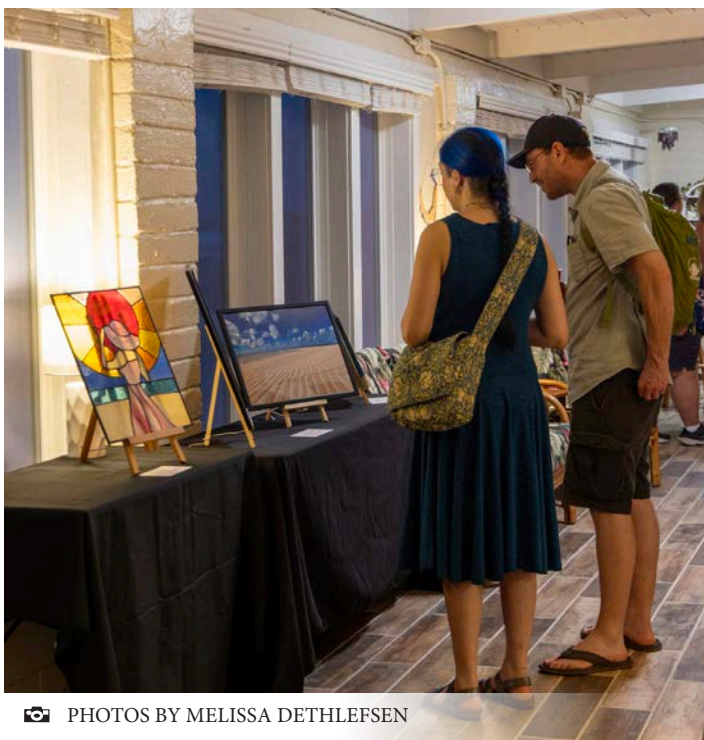
PHOTOS BY MELISSA DETHLEFSEN



PHOTOS BY MELISSA DETHLEFSEN



PHOTOS BY MELISSA DETHLEFSEN

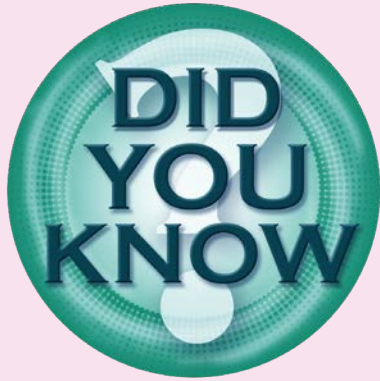


PHOTOS BY MELISSA DETHLEFSEN



PHOTOS BY MELISSA DETHLEFSEN

THIS PAGE: "The annual art show adds a touch of sophistication to Kwajalein while supporting a meaningful cause."
~Christy Wagnon



Did you know the use of government vehicles for personal purposes is prohibited around the island?

Government vehicles, to include golf carts, are meant strictly for official business, and unauthorized use can result in disciplinary action and progressive consequences for repeated offenses. Vehicles must be used within the guidelines of the Commanding General, US-AMDC; CDR USAG-KA; and statutory provisions in accordance with Army Regulation 58-1. Golf carts and bicycles are available for rent at the MWR Building 805.



CALLING ALL ROI RATS!!

**The Kwaj Boy Scouts
Would like to challenge you
to a game of kickball.**

**The game will be held on Roi-Namur
March 23rd @ 10:00 A.M.**

**A sign up sheet will be posted at the
Outrigger Grill. Please sign up to play or
show up to cheer on the competition.**



EARN YOUR TEAM KWAJ TAB

1. Attend Col. Morgan's TEAM KWAJ brief (either Teammate or Community version), read and adhere to the TEAM KWAJ Teammate Pact, presented at initial town halls, and periodically thereafter.
2. Attend the Island Newcomer's Briefing.
3. Attend at least one group greeting at air terminal for personnel arriving on island. Make them feel welcome and show them we are happy they are on Kwaj with us.
4. Attend at least two garrison after-hours team-building or social events (TEAM KWAJ Happy Hour, Commander's Call, Hail/Farewell).
5. Attend at least two TEAM KWAJ PT/Wellness sessions. Become a regular attendee!
6. Visit Marshallese Cultural Center in last 3 months prior to tab award.
7. Visit Ebeye, Third island or Majuro in last 3 months prior to tab, use a Marshallese phrase or two and visit a store/restaurant.
8. Tell three co-workers how to earn the TEAM KWAJ tab.
9. Swim, snorkel, boat or paddle on the lagoon at least once with a teammate.
10. Complete the TEAM KWAJ Circle-island 6-mile ruck march/walk/bike and read all historic battlefield markers. This is an organized USAG-KA hosted event several times per year.
11. Mission Partner wild card event—discuss with your supervisor any additional organizational requirement. Could be knowledge-based, achievement-based, or physical challenge.
12. Final event, "Board of Review" -- meet with Col. Morgan face-to-face individually or in a small group with all requirements fulfilled. Schedule with garrison front office. Discussion items may include but are not limited to; TEAM KWAJ pact - "Healthy Community of Excellence," Kwaj history, Marshallese culture, military/strategic missions and their significance, and future operational potential.

Once you have the first 11 items completed, contact Terri Wilson at 480-4322 or at terri.l.wilson20.civ@army.mil to set up a date/time with the commander for the final event.



Check out more news and entertainment about Kwaj life on the USAG-KA YouTube Channel, at <https://www.youtube.com/USArmyGarrisonKwajaleinAtoll>.

FOR KWAJ COMMAND TEAM INFO & UPDATES



TEAM KWAJ COMMANDER



@TeamKwajCommander

KEEP FOLLOWING



U.S. ARMY GARRISON - KWAJALEIN ATOLL



NASA ASTRONAUT ANDREW "DREW" MORGAN



@AstroDrewMorgan

Kwajalein



MIA Project

NEVER FORGET.

<https://kwajaleinmiaproject.us/>

COMMUNITY CLASSIFIEDS

Submit Announcements to the Roller Channel and The Kwajalein Hourglass

OPEN CALL FOR ANNOUNCEMENTS
The island community is invited to submit listings for events and for sale items; announcements; department trainings; safety updates; public service messages; and thank-you messages.

Preparing Your Message

For questions about your messaging, please reach out to the USAG-KA Public Affairs Office at 480-4848.

Ads should always include a point of contact, phone number and/or email address.

Private parties, fundraisers and events requesting and/or accepting donations are typically not allowed for publication per AR 360-1. Fundraisers and support activities for private and schools-based organizations, scouting groups, civic clubs and other listings may be subject to a legal counsel review to determine their eligibility for publication.

Formatting Your Listings

It is recommended that graphical advertisements and announcements intended for the Hourglass and the AFN Roller Channel be formatted as PowerPoint slides.

Graphic designers are asked to maintain a generous margin (.75-1-inch) around all sides and to size fonts no smaller than pt. 20.

If your Roller Channel advertisement requires a special expiration date, please note this for the Roller team in the body of your message.

Deadlines for Submissions
Send advertisements for the Kwajalein Hourglass and the AFN Roller Channel to kwajaleinhourglass@gov2x.com on Wednesdays by close of business/Thursday morning.

Roller Channel ads are accepted on a rolling basis by 4 p.m. for a mid-week and late-week update. Ads received after 4 p.m. will be loaded in the next update. Please ensure you submit ads in good time to ensure timely upload.

Do Not Take Cultural Artifacts. It is illegal to remove cultural resources from the atoll. This includes any protected species, unexploded ordnance, WWII-era artifacts and ancient Marshallese artifacts. These resources are protected under U.S. federal and RMI law. Contact the Kwajalein Archaeology Office at 480-8867.

Driver's Licensing Classes. Kwaj: Every Wednesday, Bldg. 856, Rm. 101, 9 a.m. for RMI, 1 p.m. for Expats. Preregistration is encouraged. Space is limited. Roi Classes: Every second Friday in C-building. 9 a.m. - RMI, 11 a.m. for Expats. No preregistration required. To register, email wilson.kaisha@gov2x.com, audrey.hughes@gov2x.com, and/or george.parker3@gov2x.com, or call 480-3376.



Contact the USAG-KA Sexual Harassment/ Assault Response and Prevention Victim Advocate

Chief Warrant Officer 2 Nate Elkins
SHARP Victim Advocate
Work: 480-0660 or 480-3421
USAG-KA SHARP Pager:
808-580-3241
DOD SAFE Helpline: 877-995-5247

Emergency Management. Visit the USAG-KA Emergency Management webpage, <https://home.army.mil/kwajalein/index.php/my-fort/EM>; 2) Click on "Mass Notification"; 3) Follow the registration instructions.

E-Wareness: It is each driver's responsibility to ensure vehicles are not leaking fluids other than air conditioning condensate. Call 911 to report spills and arrange with automotive for routine maintenance. Please call Environmental at 480-0722 with questions. Ej an ri-kator eo eddo non lolorjake bwe wa eo ejjab leak jabdewot oil ijelak in drennin air condition eo jen wa eo. Ne elon jabdewot leak/lutok in oil jen wa eo, Kiir 911 non report- e lutok eo. Ak kiir Environmental ilo 480-0722 non kajitok.

Fire Safety Tips. Some pets are chewers. Watch pets to make sure they don't chew through electrical cords. Pets are curious. They may bump into, turn on, or knock over cooking equipment. Keep pets away from stoves and countertops. Make sure pets are included in your family's fire evacuation plan. Build an evacuation kit for each pet in your household.

Flights. Please note that all flights are subject to change. For the latest update on your flights on United, ATI or Air Marshall Islands: ATI: 480-2169; AML: 480-3469; United: 480-4852 or 1-800-UNITED1; Air Terminal Services: 480-2660; Flight Information Recording: 480-3589

UA Schedule Effective Now: Monday and Fri-

ANNOUNCEMENTS

AFH Construction Is Ongoing. Nan, Inc. Construction is scheduled to commence the telecommunication scope of work for the FY21 Kwajalein Army Family Housing project in our community from February – September 2024. Residents and commuters should be aware of possible changes in traffic patterns and to plan their routes accordingly. Nan, Inc. Construction is committed to minimizing any inconveniences, and we will strive to ensure a smooth and efficient construction process.

ArMA. Log in to ArMa, the Army Maintenance Application, to report issues for all buildings maintained by the Department of Public Works. Contact Public Works at 480-3550.

CAC Office. Before your visit to the Common Access Card Office, ensure all paperwork is completed by your human resources representative before making an appointment. Bring two forms of government-issued IDs with you. Walk-in appointments are welcome, but there may be a wait. CAC Office Hours, Bldg. 835, are Tuesday – Saturday, 8 a.m. – 4 p.m.; (Lunch: noon - 1 p.m.). Call 480-8496.

day—UA 155 (HNL); Check-in 2 – 4:50 p.m.;
Wednesday—UA 133 (HNL); Check-in 2 – 4:15
p.m.; Tuesday and Saturday—UA 154 (GUM);
Check-in 10:45 – 11:15 a.m.

FlyRoi Reservations. To schedule reservations
and for correspondence related to flights, email
LCVKwajaleinFlyRoi@versar.com.

How to dress in the RMI. Out of respect for the
Marshallse culture, residents are asked to
dress appropriately when visiting Ebeye, Third
Island, or anywhere within Kwajalein Atoll.
Women should wear clothing to cover shoulders
and knees. None are permitted to wear shorts
when visiting churches on Ebeye. Men should
wear long slacks to church.

Kwaj Small Boat Marina hours are 7:30 a.m. – 6
p.m. Friday through Monday, and on holidays,
excluding Thanksgiving and Christmas. Morn-
ing boat reservation times are from 7:30 a.m.
– noon. Afternoon boat reservations are from
1 – 5 p.m.

Not Feeling Well? Call 480-2223 to make an ap-
pointment for a COVID-19 test, Tuesday through
Saturday from 7:30 a.m. – 4:30 p.m. If you are
not feeling well, please wear a mask when you
are around others in the community.

Operational Security. See something, say some-
thing. All employees on USAG-KA are required
to receive annual Threat Awareness and Re-
porting Program training provided by KRO; Re-
porting: Report suspicious activities to the Kwa-
jalein Resident Office at 480-9859/1293/8006 at
Bldg. 1163.

PCS & Vacation Tips. Notify the post office be-
fore leaving for 30 days or PCS'ing. Per DOD
4525.6-M, mail is only allowed to be held for 30
days with or without prior notice. Mail is consid-
ered unclaimed on day 31 and will be returned to
the sender. Email the post office to authorize pick
up for your mail and packages. When PCS'ing,
provide a forwarding address. Contact James
Smith with questions at 480-3461 and james-
e.smith2295@army.mil.

Salon Walk-Ins. Surfside Salon Walk-In Appoint-
ments are available on Fridays from 1:30 - 6 p.m.

Smoking. USAG-KA, smoking is permitted in
designated smoking areas only. Smoking and
cigarette butt receptacles must be at least 50 feet
from the entrance of facilities.

HELP WANTED
For employment with contractors
within the
U.S. Army Garrison - Kwajalein Atoll
please check
contractor company
websites
for employment opportunities.

Taxi Service. Call 480-TAXI (8294) or 3341 to
book your ride at least 24 hours in advance of
check-in time.

Millican Family Pool Hours. Closed for cleaning
on Thursdays. Open noon to 5 p.m. Tuesdays,
Wednesdays, Fridays and Saturdays. Open 11
a.m. to 5 p.m. Sundays and Mondays.

The NEC Testing Center Is Open to the Com-
munity - Giving you the head start you need to
thrive! - Open Tuesday through Saturday by ap-
pointment
Authorized Pearson VUE Test Center. Schedule
A test Today!
NEC testing Center, 480-4344, FN 1008-131
ACUITY International
Job Postings for this contract
have "Marshall Islands" in the job title.
<https://acuityinternational.com/careers/>
Anyone interested please reach out directly to
Melani.Gebhardt@acuityinternational.com

All-Year Licensing Classes
Kwajalein: Wednesdays, Bldg 856/Rm 101
Roi Namur: Every 2nd Wednesday, Bldg C
• 0900 hrs (RMI) • 1300 hrs (Expats)
REGISTRATION - None required for Roi Namur.
Kwajalein registration encouraged as space is
limited. Call 480-3366 or email:
George.Parker3@gov2x.com
Kaisha.Wilson@gov2x.com



OPSEC
IS NOT
RETROACTIVE.
THINK BEFORE
YOU SHARE
INFORMATION.
ONLINE AND OFFLINE.



Like and share @USArmyOPSEC

CINEMA

Now Showing at the Yuk Theater

Saturday, MARCH 1

"Amsterdam" (2022) (R) 134 min.

Sunday, MARCH 2

"World War Z" (2013)
(R) 116 min.



Saturday, MARCH 8

"Tommy Boy" (1995)
(PG-13) 97 min.

Sunday, MARCH 9

"An Officer and a Gentlemen" (1982)
(R) 124 min.

Saturday, MARCH 15

"Black Adam" (2022)
(PG-13) 125 min.

Sunday, MARCH 16

"Candyman" (1992)
(R) 99 min.



Saturday, MARCH 22

"The Magnificent 7" (2016)
(PG-13) 132 min.

Sunday, MARCH 23

"The Long Kiss Goodnight" (1996)
(R) 121 min.

Saturday, MARCH 29

"Moneyball" (2011)
(PG-13) 133 min.

Sunday, MARCH 30

"Ticket to Paradise" (2022)
(PG-13) 104 min.

All showtimes start at 7:30 p.m.



RICHARDSON THEATER



Due to equipment issues, there will be NO movies screened at the Richardson Theater until further notice.

We apologize for the inconvenience.

Family friendly movies will now be featured at the Yuk Theater on Saturdays. And mature audience movies will show on Sundays.



WHAT COULD THIS BE? 🤔



SEND YOUR GUESS TO
THE PAO EMAIL BELOW!

Kwajalein Atoll is a significant archeological location. If you find anything, take a photo, remember where it is and notify the Public Affairs officer at Sherman.hogue.civ@army.mil but do not pick up, or remove the object.

Kwajalein Reclaimed Water Standard Violation

The Reclaimed Water System Document of Environmental Protection (DEP) requires public notification when the standards for reclaimed water are not met. In January 2025, 92.2% of all reclaimed water samples were above 0.5 mg/L chlorine concentration which is less than the required 95% standard. Chlorine is added as a disinfectant at the Point of Entry into the Reclaimed Water System. On 22 & 24 January 2025, the 7-day rolling turbidity average in the reclaimed water distribution system measured above the 2.0 Nephelometric Turbidity Units (NTUs) standard. Turbidity is the cloudiness or haziness of a liquid caused by particles that are generally invisible to the naked eye. No health-based restrictions on the normal use (irrigation, vehicle washing, etc) of reclaimed water are necessary. There is no threat to public health or the environment resulting from this turbidity exceedance. Questions? Contact V2X Environmental at 480-0722.

Jorraan Eo Ilo Reclaimed Water System Eo Ion Kwajalein

Ekkar non Reclaimed Water Document eo an Environmental Protection/ak naetan (DEP) aikuj bwe en karon jukjuk in ped elane ewor jorraan ko rejolet dren eo ion Kwajalein. Kar January 2025, 92.2 % in sample ko rar ilon in 0.5 mg/L chlorine concentration eo erik jen jonin ej required 95% standard. Ilo 22 im 24 January 2025, 7-ran rolling turbidity average in the reclaimed water distribution system eo ej kalog ke ej ilon lok 2.0 Nephelometric Turbidity Unit (NTU) Standard. Menin ekomman bwe en laplok an tap ak ettoon dren in ilo an koman kii ko jeban loi. Ejjab jelet ejmour non karon im rejan ikkijeon ko jermal dren in (non wutdrikdrik, kwali waa ko, im jermal ko eirlokwo) non aikuij ko jet. Jokjok in eban jelet ejmour ak jukjuk bed ilon alik kar ilo ekotak kein. Kajitok kir V2X Environmental ilo 480-0722.

Annual Hazardous Materials, Wastes, and Petroleum Product (HMWPP) Training (ENV-100), Spill Response Awareness Training (ENV-110), and PCB Management Training (ENV-190) on Roi-Namur Island

Training is required for tenants on Roi that manage HMWPP storage areas (i.e., facilities that store an aggregate quantity greater than 55-gallons of HMWPP) or deal in PCBs.

Roi-Namur (The TRADEX Conference Room):

Tuesday, March 25, 2025 (HMWPP Custodian Training)

- 9:00 a.m. – 11:00 a.m.
- 1:00 p.m. – 3:00 p.m.

Wednesday, March 26, 2025 (PCB Management Training)

- 9:00 a.m. – 11:00 a.m.

Pre-register is not required to attend trainings.

Questions? Please Call the Environmental Department at 480-2633.



During the dry months here on Kwajalein Atoll, we all need to be diligent in conserving non-potable water. In an effort to control water usage please limit the watering of plants to 30 minutes every other day.

Thank you for your efforts in conserving our precious resources.



PHOTOS BY MELISSA DETHLEFSEN

COMMUNITY LOCAL ARTIST ANNE JAHNKE

HOURLASS REPORT

During the COVID-19 lockdowns, Anne Jahnke, a librarian, had a lot of extra times on her hands. An avid gardener, she wanted to do more than just grow and look at plants—she decided to teach herself how to draw them. She has been inspired from places around the world that she has lived in, from farthest Africa to our Kwajalein Atoll.

What sort of art do you make?

I create botanical art, which includes plants that I have collected, grown or encountered on my travels. As well as celebrating the beauty of

each unique plant, it also becomes a scientific record of natural flora.

What material and techniques do you prefer, and why?

My botanicals are mainly watercolor. I have experimented with pencil, acrylics, and inks, but find that watercolor produces a more natural look. More recently I have begun using Apple pencil and iPad to make digital versions.

How long have you been making art?

I began during the first summer of COVID lockdown

in 2020. I am an avid gardener and appreciate nature, but wanted to do more than just grow and look at plants. I began by learning more of each plant I discovered in my backyard, then moved on to native prairie plants and the huge variety of Kew Gardens in London. I bought a set of colored pencils and found some leftover tubes of paint from my son's college days. I did not take any art classes, but tried faithfully to recreate the wonder of nature on paper. Since then I relocated to Africa, and then to Kwaj, giving myself new worlds of plants to draw and research.

Can you describe your creative process?

I draw whatever interests me and makes me curious. I will visit the Kwaj gardens just to see what is growing there, taking note of new plants that I can research later. I want to have a record of each plant, and find out what makes it unique and interesting. I fill sketchbooks with my drawings and information pertaining to each species and family. I have been influenced by the Victorian meanings of flowers, local folklore and historical uses for particular plants. I am excited to find new specimens, and new

connections between plants around the world. The Crown Flower on Kwaj is part of the milkweed family which has varieties native to prairies in the Midwest, and African sub saharan landscapes.

How do you approach a new project?

I begin by photographing and sketching plants to capture all the details. My choice of medium for a botanical often comes from the colors I need. Acrylics, inks and watercolor all produce different intensity and tones of color.

Acrylics can build up texture, inks provide vivid colors and details, and watercolor produces soft natural washes. If I am happy with the results, I will make a digital version. These photos can then be stored, shared and edited for different purposes. I have been asked to make cards, stickers and calendars with these digital designs.

What on Kwajalein inspires you?

So much: the different palms; the morning glory and pea that has adapted to thriving

on the salty shore line; the hardy orchids, plumeria and crown flower, that can be woven into leis and head dresses; the massive java almond trees with their heart shaped pods; and of course, the brilliance of the hibiscus and the desert rose. I am in awe of anything that is able to produce beauty in such a harsh environment.

What is your best or most interesting piece of artwork? Why?

On a visit to Kew Botanical Gardens in London, I

snapped a quick picture of a delicate blue flower. When I started painting it, I found I had also captured a honey bee in the process of pollinating. This drew my attention to the important connection of birds and bees, with flowering plants. I now record any unusual adaptations that benefit pollination, and the symbiotic relationship between creature and plant. Certain birds and insects have made their way into my botanical paintings for this reason. ▼

WEEKLY TROPICAL WEATHER THREAT OUTLOOK

RTS WEATHER STATION STAFF

Discussion:

Through yesterday, we have received 0.24 inches of rain for March, which is 0.33 inches below normal for the month. So far in 2025, we have only received 3.56 inches of precipitation, which is 4.32 inches below normal for the year. Typical dry season conditions will continue for the next seven days with a slight increase in shower coverage for Kwajalein Atoll due to surges in the trade-winds, more so on Monday and Tuesday due to a combination of speed and directional convergence of the winds. No thunderstorm days occurred over the past seven days. A thunderstorm day is defined as an "in situ" lightning strike within five miles of the weather station. The Intertropical Convergence Zone (ITCZ) has completely collapsed north of the Equator, removing our most important precipitation producing element from the picture from the RMI for next week. The Madden-Julian Oscillation (MJO) has transitioned to a neutral phase for our part of the Pacific, and will not be a factor on the RMI. The El Nino Southern Oscillation (ENSO) is in La

Nina conditions, with the sea surface temperatures (SST) in the central Pacific between the RMI and the Date Line at about one degree C below normal. Cooler temperatures in the Pacific to the east of the RMI work against shower activity, and are one of the main reasons for the moderate drought conditions affecting Kwajalein Atoll. These cooler temperatures are having a disproportionate effect on the central Pacific compared to their normal impacts on the eastern Pacific. Cooler surface ocean temperatures in the central Pacific also tend to work against tropical cyclone development to the east of the RMI, where it could pose a threat to our region. We are also out of the tropical cyclone season as a whole for the western Pacific with the northern winter now climatologically in place.

Tropical Cyclones:

No significant tropical cyclone activity expected to affect anywhere in Micronesia, the Mariana Islands, Wake Island or Hawai'i. We are in climatological winter for the northwest Pacific, which generally bring a considerable decline in tropical cyclone activity.

Damaging West Winds / Westerly Swell:

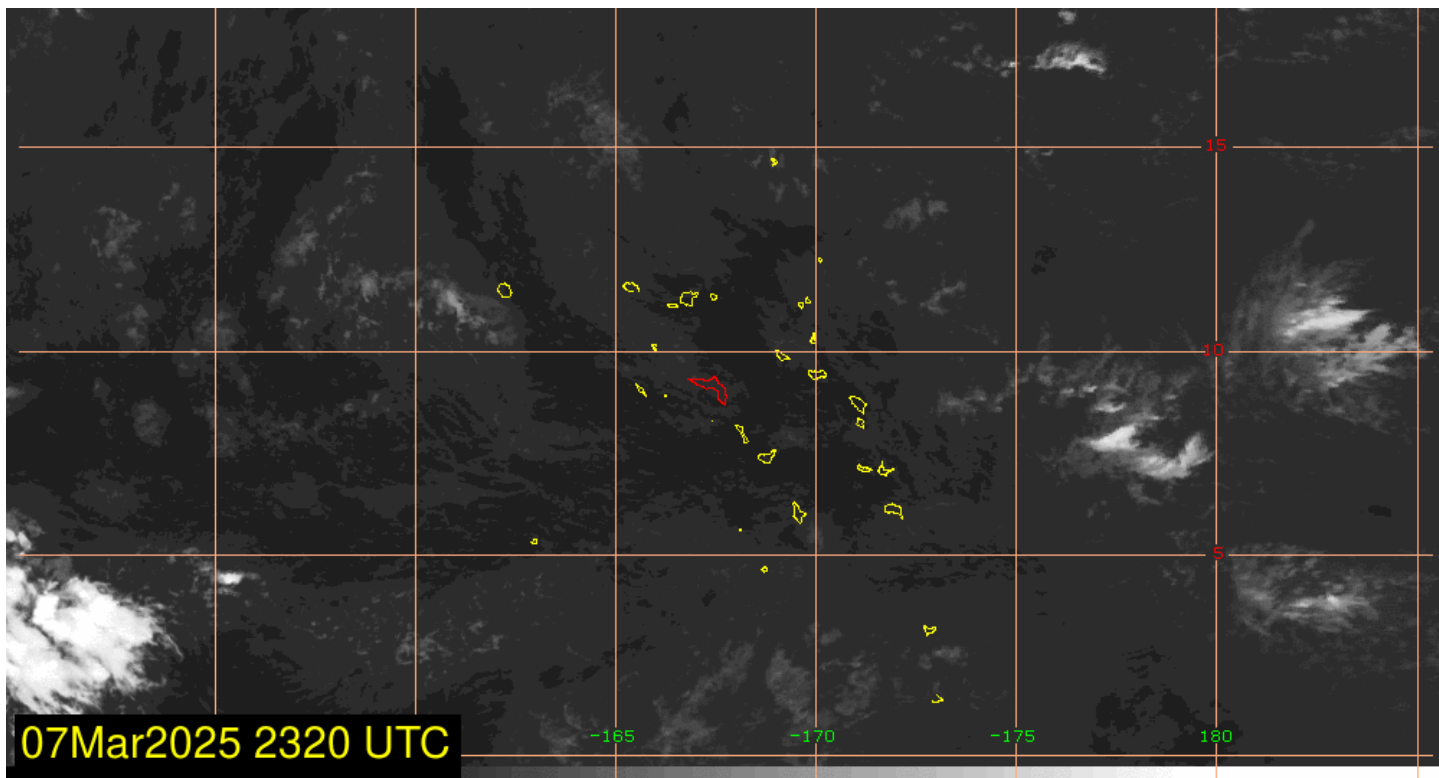
None expected. Micronesia is northeast trade wind dominant.

Swell / Tide Inundation for Kwajalein Atoll and Wake Island:

The New Moon was last week, and today is the waxing half-moon phase with its neap tides. All high tides will be under four feet until the 11th. Winds will sustain between 16-21 knots tonight and about 18-23 over the open lagoon. They will come down a bit on Friday and Saturday to 14-19 with clear-air gusts into the low 20s, and will go back up on the second half of Sunday into Monday to close to 20 knots, higher on the open lagoon. The issuance of a Small Craft Advisory (SCA) tonight remains a real option, as there is a good chance that winds will sustain at 20 knots for a continuous 30-minute period with another possible issuance on Sunday afternoon through Monday. At this time the swells are expected to stay below High Surf Advisory (HAS) levels. The Ratak Chain of Islands to our east will do a good job of diminishing the east-north-

east swells that are synced with the winds on late Sunday through Monday. Swells will be elevated at 8-11 feet just seaward of the eastern reef edge, but just below the violation threshold. There will be some splash up during high tides through the weekend.

Purpose: This weekly briefing is delivered Thursday mornings to island leadership. The intention of this briefing is to provide situational awareness of weather events that may interrupt operations and transportation around Kwajalein, to/from Hawaii and Guam, and in the Wake vicinity. The main threat assessed in this brief is existing and potential development of tropical cyclone activity. This brief also provides an outlook of abnormal winds, sea state, and precipitation guidance for next 7 days around the Kwajalein Atoll. The distribution list will also receive updates on any developing tropical cyclone activity in the Kwajalein region that occur between the weekly outlook product. ▼



WEATHER

RTS WEATHER STATION STAFF

WEATHER DISCUSSION

Dry and breezy conditions are expected to close out the work-week, with somewhat wetter weather possible for the weekend. The main weather story will be the winds, with a strong subtropical high-pressure system to the north creating a tight pressure gradient across the RMI. Winds will generally be in the upper teens for this time period, with clear-air gusts in the low 20s and gusts in the upper 20s possible near showers. Winds may exceed or at least come close to Small Craft Advisory (SCA) criteria from time to time, and they may also lead to falling palm fronds and coconuts. Sunday into Monday,

an area of speed convergence will make its way through the central RMI. This, along with some increase in mid-level moisture, may bring a modest increase in shower activity these days, including the potential for a heavier shower or two. There may also be just enough cold air and divergence aloft to generate a stray lightning strike if any deeper showers develop.

SATURDAY

Mostly sunny with stray showers. Winds NE-E at 15-20 knots with clear-air gusts in the low 20s and higher gusts near showers.

SUNDAY

Partly sunny with isolated showers. Winds NE-E at 15-20 knots with clear-air gusts in the low 20s

and higher gusts near showers.

MONDAY

Partly sunny with isolated showers decreasing to stray by noon. Winds NE-E at 15-20 knots with clear-air gusts in the low 20s and higher gusts near showers.

NEXT WEEK

A pattern change appears possible next week, with the Inter-Tropical Convergence Zone (ITCZ), attempting to shift northward into the central RMI and bring some deeper moisture with it. This may lead to increased shower activity periodically throughout the week, potentially bringing some much-needed rainfall. However, there remains considerable uncertainty regarding how far north

the ITCZ will shift and how well-organized it will be. Therefore, this is far from a sure thing. Breezy conditions look

to continue, although the winds look to lighten up a bit from the weekend. X

 SUN-MOON-TIDES				
	SUNRISE SUNSET	MOONRISE MOONSET	HIGH TIDE	LOW TIDE
SUNDAY	6:59 a.m. 7:00 p.m.	2:49 p.m. 2:58 a.m.	2:21 a.m. 2.0' 2:00 p.m. 3.2'	7:22 a.m. 1.5' 8:54 p.m. 0.6'
MONDAY	6:59 a.m. 7:00 p.m.	3:45 p.m. 3:52 a.m.	2:57 a.m. 2.6' 2:49 p.m. 3.7'	8:29 a.m. 0.9' 9:22 p.m. 0.2'
TUESDAY	6:58 a.m. 7:00 p.m.	4:38 p.m. 4:40 a.m.	3:23 a.m. 3.1' 3:23 p.m. 4.1'	9:07 a.m. 0.5' 9:47 p.m. -0.1'
WEDNESDAY	6:58 a.m. 7:00 p.m.	5:27 p.m. 5:24 a.m.	3:47 a.m. 3.5' 3:52 p.m. 4.4'	9:38 a.m. 0.1' 10:09 p.m. -0.3'
THURSDAY	6:57 a.m. 7:00 p.m.	6:13 p.m. 6:04 a.m.	4:10 a.m. 3.9' 4:17 p.m. 4.5'	10:05 a.m. -0.2' 10:31 p.m. -0.5'
FRIDAY	6:57 a.m. 7:00 p.m.	6:58 p.m. 6:42 a.m.	4:33 a.m. 4.1' 4:41 p.m. 4.6'	10:31 a.m. -0.4' 10:52 p.m. -0.6'
MARCH 15	6:56 a.m. 7:00 p.m.	7:41 p.m. 7:18 a.m.	4:56 a.m. 4.3' 5:04 p.m. 4.6'	10:57 a.m. -0.5' 11:13 p.m. -0.6'

FOR QUESTIONS ABOUT ISLAND LIFE AND ARMY REGULATIONS, PLEASE CALL THE COMMANDER'S HOTLINE AT 480-1098. FOLLOW THE USAG-KA FACEBOOK PAGE TO RECEIVE INFORMATION AND UPDATES REGARDING SAFETY INFORMATION, EVENTS, AND OFFICIAL COMMAND ACTIVITIES.

Until Next Week!

