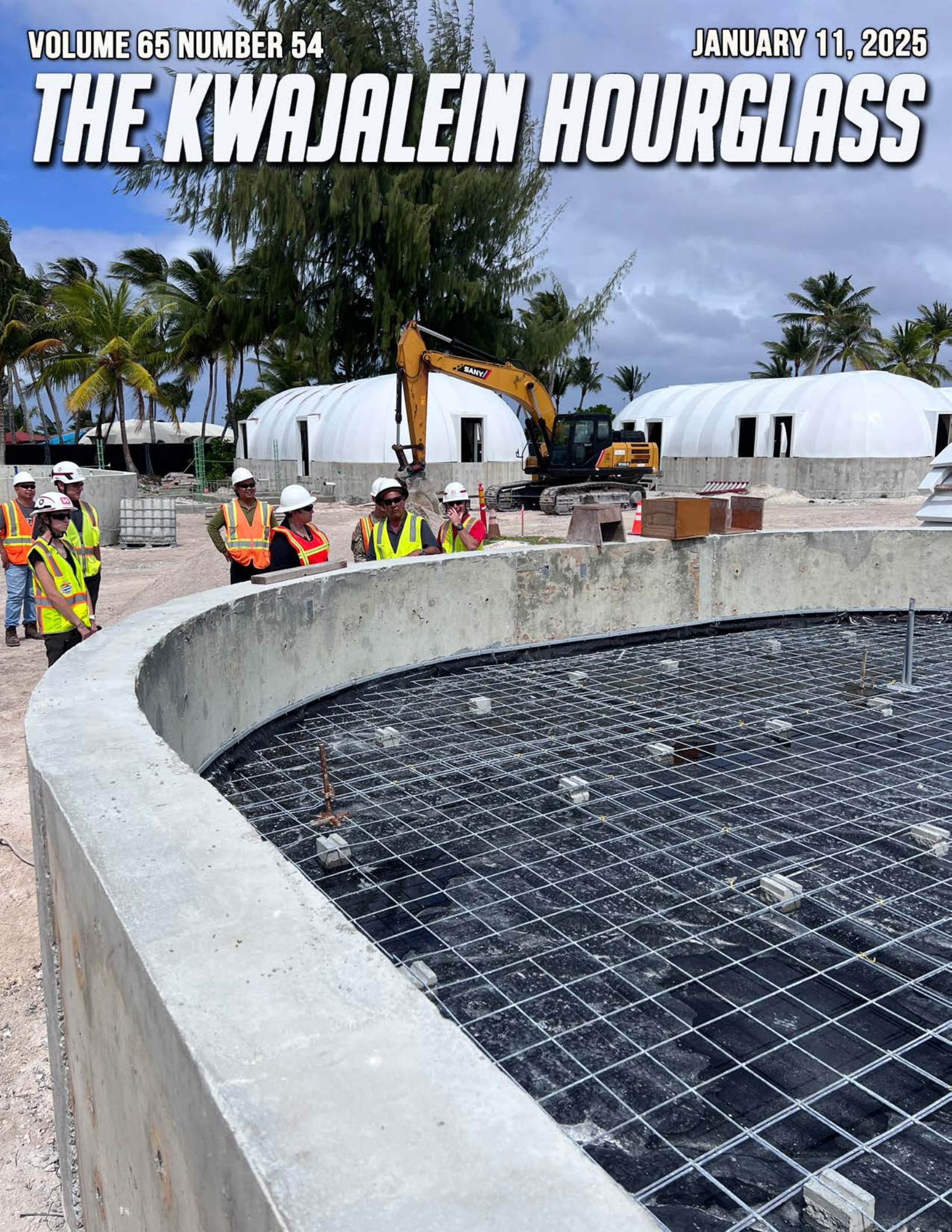


VOLUME 65 NUMBER 54

JANUARY 11, 2025

THE KWAJALEIN HOURGLASS



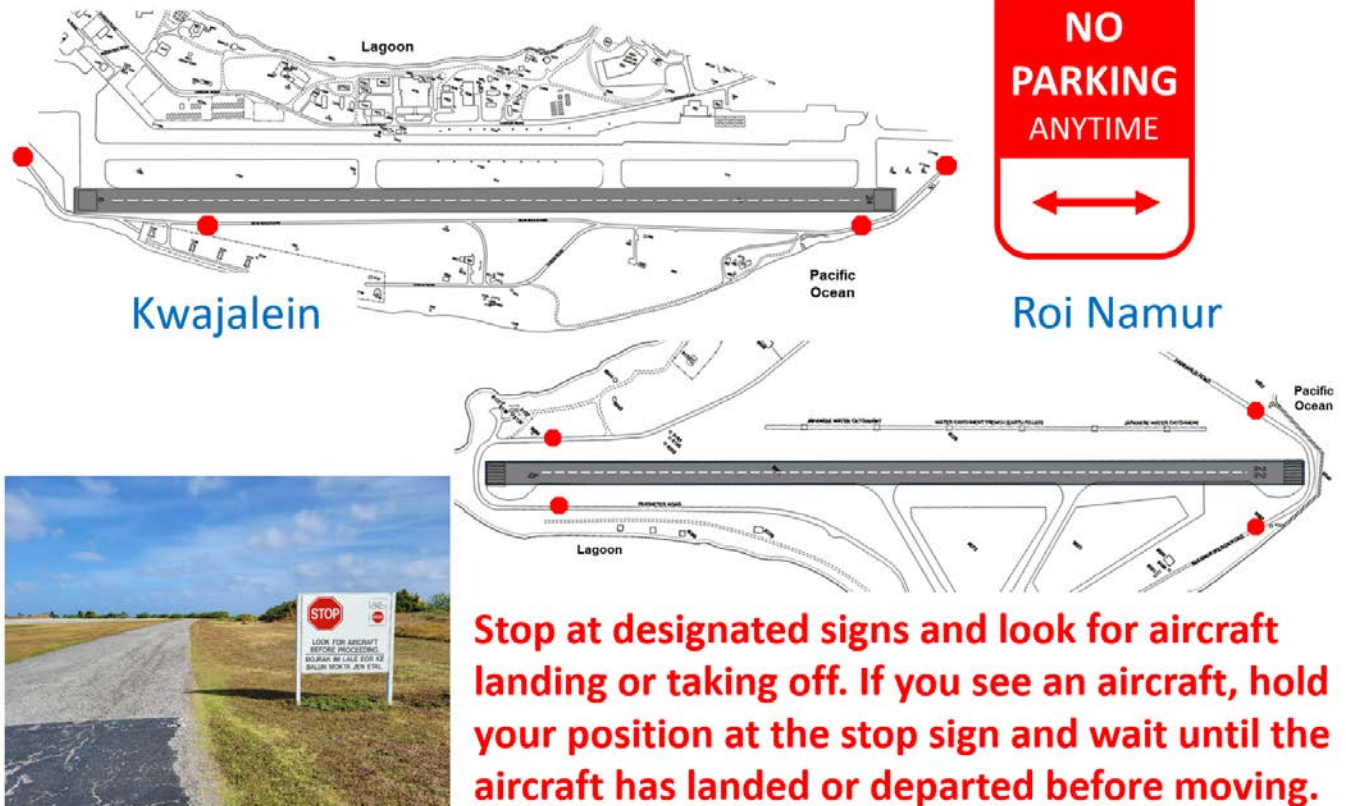


KWAJALEIN & ROI NAMUR, STOP FOR AIRCRAFT!!



Please remember to stop and look both ways for aircraft on:
Zeus Blvd., Ocean Rd., Perimeter Rd., Pandanus Rd., Eleanor
Wilson Rd.

**If aircraft are on approach or taking off, you must hold your
position and wait!**



**Stop at designated signs and look for aircraft
landing or taking off. If you see an aircraft, hold
your position at the stop sign and wait until the
aircraft has landed or departed before moving.**



THE KWAJALEIN HOURGLASS

The Kwajalein Hourglass is named for the insignia of the U.S. Army's 7th Infantry Division, which liberated the island from the forces of Imperial Japan on Feb. 4, 1944. The Kwajalein Hourglass is an authorized publication for military personnel, federal employees, contractor workers and their families assigned to U.S. Army Garrison-Kwajalein Atoll.

EARN YOUR TEAM KWAJ TAB!

Contents of the Hourglass are not necessarily official views of, or endorsed by, the U.S. Government, Department of Defense, Department of the Army or USAG-KA. It is published Saturdays in accordance with Army Regulation 360-1.
Phone: Defense Switching Network: 315-480-5169
Local phone: 480-5169

Garrison Commander.....Col. Drew Morgan
Garrison CSM.....Command Sgt. Maj. Ernest Miller
Public Affairs Officer.....Sherman Hogue
Editor.....Muhammad Rasheed
Communications Specialist.....Stephen Elson
Media Capture.....Melissa Dethlefsen
Reporter.....Christy Wagnon



U.S. ARMY PHOTOS BY KWAJALEIN HOURGLASS

SAFETY PROPER USAGE OF THE EXTENSION CORD

HOURLASS REPORT

The convenience of the extension cord is a wonderful thing. The iron's plug can't reach across the room? Just attach the orange extension familiar is most households and Voila! Problem solved! The problem is that we've grown so used to taking this convenience for granted—even here in the Kwajalein Atoll community—that we don't realize we are often using this common household tool incorrectly.

How is this? it's not like it's difficult to plug a cord into an electrical outlet. How can we possibly mess that up?

Well, the problem is that the handy-dandy extension cord is a temporary tool. It's designed for power tools in a limited time frame usage and when the immediate task is complete, you unplug it. It is NOT designed to plug-n-forget as a permanent solution. Because it's not designed for that, it is easy to accidentally overload its capability and potentially cause a fire.

To prevent this unfortunate common hazard, only use the extension for the intended small hand tool, limited usage and always plug large appliances directly into the wall sockets. Stay safe!



U.S. ARMY PHOTOS BY KWAJALEIN HOURGLASS



Congratulations!

Yard of the Month
Kwajalein Atoll, RMI

Winner for November 2024

Tony & Mikiko Maika 489-A





U.S. ARMY PHOTOS BY MARCIA SCOTT

COMMUNITY

ROCKIN' OUT WITH THE ALWAL BAND | ROI NAMUR

HOURLASS REPORT

"When I first walked into the Outrigger and heard the music," said Ms. Nikki Berry, Quality Auditor II for LOGCAP V/V2X. "I thought the band was going to be playing all island music. You know? With a strictly local theme. Instead, I was pleasantly surprised! They played a little of everything."

As she reminisced about the Alwal Band, the talented Marshallese young people showing out with their crowd-pleasing cover tunes back on Friday, December 20, 2024 at The Outrigger Bar & Grill on Roi Namur, Ms. Berry commented upon the surprisingly professional and high-end set up n display. "Because a lot of times, these little local bands will have subpar

equipment right? You'll hear odd noises coming through the speakers and that whine of interference if you get too close. There was none of that with the Alwal Band guys and they played very clear, not muffled or anything at all. They had a nice setup, they were neat and organized, and the acoustics were good."

With about 45 to 50 Roi Namur residents enjoying the show, the community had quite the treat. "Oh, the band brought out everybody and they looked genuinely happy to be there. The band knew how to really get the crowd involved and everyone was glad to join in. It felt so good to get out and enjoy live music, even though I don't dance, I just did a little bee-bop in the chair. But if really did feel like

I was transported to a club back home. The lighting really took you off the island—it had some real razzle-dazzle added to the Outrigger's normal lights, with even a strobe effect. The band was so talented; they did such a good job with all the covers! The lead singer could really sing."

Ms. Berry's description wasn't a singular experience as the reports of the crowd at each of Alwal Band's performances drew equal enthusiasm.

It was a definite holiday morale booster for me and the Roi community. The Outrigger hasn't had a crowd like that since the Roi wave. The bands variety of music had many people out their seats dancing and having an

awesome time. I would love to have them visit again.



U.S. ARMY PHOTOS BY MARCIA SCOTT



**2025
Basketball
Season**



REGISTRATION BEGINS
December 1, 2024 – January 3, 2025
MANAGERS MEETING
January 4 @ 5:30 p.m. CRC Gym
SEASON BEGINS
January 15 @ CRC Gym



**To register visit the
Grace Sherwood Library
or call 480-3331.
\$100 fee per team.**





**2025
INNER-TUBE WATER POLO
REGISTRATION BEGINS**

December 1, 2024 – January 2, 2025
Managers Meeting
January 3 @ 5:30 p.m. Millican Family Pool
Season Begin
January 14 @ Millican Family Pool



** Proposed league format – six (6) teams. Four adult, two high school.
* Each team is limited to 20 players on the roster.
* Game nights are Tuesdays and Saturdays; at 1800, 1900, 2000
* Games will be played on both Federal holidays that fall within the season; Martin Luther King, Jr. Day and President's Day.
* Individuals desiring to be on a team, leave your contact info at the library. It will be forwarded to the team coaches.*

**To register visit the Grace Sherwood
Library or call 480-3331.
\$100 fee per team.**





**80th Anniversary of the U.S. Victory in the Pacific &
the 81st of Operation FLINTLOCK**

Join us for this
1940s-themed Commemorative Hangar Dance
February 9th, 2025, U.S. Army Garrison - Kwajalein Atoll
With period music provided by the 25th Infantry Division Band

MWR APP



SCAN THE QR CODE
TO RESERVE YOUR
GOLF CART

NOW!



LOGCAP V



AFN TV: UPGRADES, RESTORATIONS, AND CHANNEL LINEUP UPDATES:

Restored Channels:

- AFN Prime Atlantic, Prime Pacific, Spectrum, Family, Alt. Prime, Alt. Movies.

HD Upgrades:

- Roller, Guide, KTV, and Weather channels now in HD for sharper clarity. Improved signal quality for News, Sports, and Sports II.

Important Notes for Older TVs:

- **Kwajalein:** Perform an auto-scan; select "Antenna (Air)."
- **Roi:** Auto-scan; select "Cable."
- **Meck:** No changes.



AFN TV: UPGRADES, RESTORATIONS, AND CHANNEL LINEUP UPDATES:

New AFN Line-Up:

- 16.1: Prime Atlantic (HD, Time Delayed)
- 16.2: News (Live HD)
- 16.3: Prime Pacific (Live)
- 17.1: Sports (Live HD)
- 17.2: Sports 2 (Live HD)
- 17.3: Alt Prime (Live)
- 18.1: Roller (HD)
- 18.2: Guide (HD)
- 18.3: Alt Movies (Live)
- 18.4: Spectrum (Time Delayed)
- 19.1: Family (HD, Time Delayed)
- 19.2: Movies (HD, Time Delayed)
- 20.1: Weather (HD)
- 20.2: KTV (HD)
- 20.4: NHK (SD)
- 20.5: KPIC (SD, unchanged).



U.S. ARMY IMAGE BY KWAJALEIN HOURGLASS

ABOVE: Artist's depiction of the concerned citizens' query.

COMMUNITY POSTMASTER UNIVERSITY | MILITARY MAIL FAQ

HOURGLASS REPORT

Q: When addressing mail to a Military Post Office™ (MPO), should I also use the city and country name?

A: No. Always use the APO or FPO address, without the name of the city and country. This is to make sure the item is handled in the military mail system instead of the international mail system.

INCORRECT:

PFC JOHN DOE
123RD ENG 2ND PLT - B CO
APO AE 09398-9998
BAGHDAD, IRAQ

CORRECT:

PFC JOHN DOE
123RD ENG 2ND PLT - B CO
APO AE 09398-9998

Q: What is the difference between Parcel Post® and Priority Mail® articles mailed to an MPO?

A: In most cases Parcel Post® articles weighing more than 15 pounds or measuring more than 60 inches (length and girth combined) will travel by ship from the U.S. gateway to the military address. Priority Mail® articles receive air transportation from the U.S. gateway to the location of the military address overseas.

Q: Are extra services such as Insured Mail, Registered Mail™, and Delivery Confirmation™ services available for military mail?

A: Yes. In general, articles mailed to MPOs are eligible for extra services; but extra services may not be available to all MPOs. For more information consult a USPS® retail associate.

Q: Can I track a package addressed to an APO / FPO location with the customs declaration form number?

A: No - customs declaration numbers are used to track only international mail articles. To track an APO / FPO item, you must purchase an applicable extra service.

Q: How long will it take for mail to reach an MPO?

A: Listed below are the Department of Defense (DoD)

mail transit times for delivering mail to overseas APO / FPO locations (delivery time begins with the time of acceptance).

Q: How do I know what restrictions and prohibitions apply to mail addressed to an MPO?

A: For restrictions and prohibitions to military APO / FPO addresses, consult the "Supporting Our Troops" page on the USPS® Web Site at www.usps.com/supportingourtroops/welcome.htm.

Q: What special precautions should I use when packaging overseas military mail?

A: Following these pre-

cautions will safeguard your package on the way to its final destination.

- Place the mailing address inside the parcel on a separate piece of paper.

- Use a box that is constructed to conform to the contents you are sending.

- Place items in the box so that the weight is evenly distributed.

- Add packing material on the inside if any portion of the box sags or is easily depressed.

- Use packaging tape for wrapping the outside of the box. Do not wrap with string.

- Cross out or cover excess markings or printing to prevent your box from being missent.

- Enclose all personal hygiene items, such as deodorant, lotion, or shampoo, in a

sealable bag.

- Place all perishable items, such as cookies, chips, etc., in a plastic container.

- When mailing liquids, ensure they are properly packaged. Limit the quantity, use a leak-proof container, and wrap the articles in an absorbent material between the inner and outer containers.

Q: Are there programs such as "Any Service Member or Any Wounded Warrior" that allow me to send items to any service member?

A: This practice is prohibited due to the risks facing deployed military forces. Previous programs that allowed people to send mail to service members unknown to them were discontinued following the terrorist attacks of 2001. This includes the "Any Ser-

vice Member, Any Wounded Warrior, Any Soldier, Sailor, Airman or Marine" mail program for military personnel. Mail to "Any Service Member" will not be delivered. This restriction applies to all classes and types of mail.

- Mail without a valid addressee and address will be returned to sender.

- Mail without a return address will be opened in our Mail Recovery Center Network to determine the sender's address.

- Mail with no means to determine the sender's return address will be sent to local charities.

Hold Mail Form

All authorized patrons may control the delivery of their individual mail by completing the Hold Mail Form,

which include written instructions. It's the patron's responsibility to notify the post office before departing, due to Temporary Duty (TDY), leave, hospitalized, etc. Please see your Post Office Staff for a copy of the form.

No emails, no texting, no phone calls will be accepted.

Our Postal Service PSAs are brainstormed-developed by James Smith & Glenna Carter.



E-wareness: Eniwetak Conservation Area (ECA)

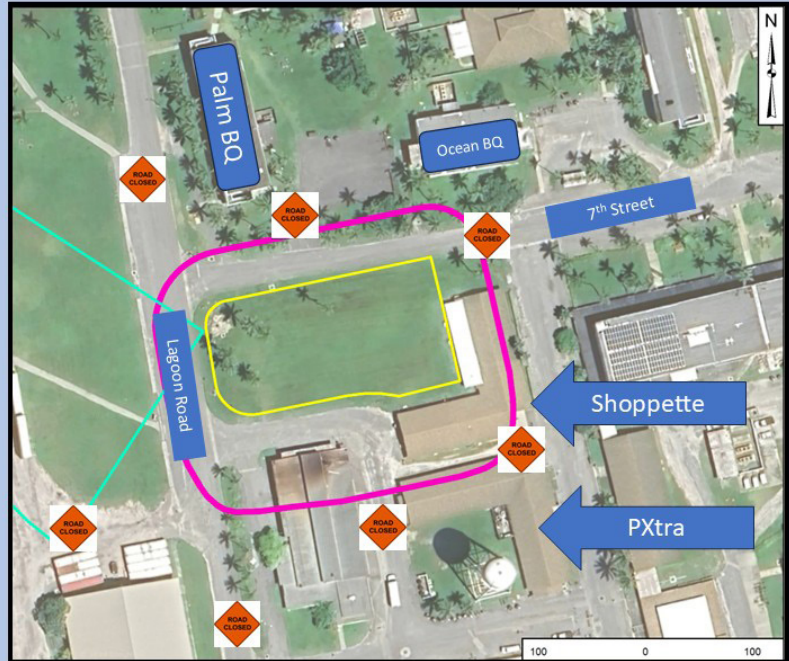


The ECA was established for conservation of wildlife and coral reef. Visitors are NOT allowed without consent from USAG-KA. This includes the waters and reefs surrounding Eniwetak. For more information call RGNEXT at 480-8855.

Eniwetak Conservation Area (ECA) ej juon jikin eo emoj kajenolak e bwe en jikin kejbarok menin mour ko ion ene/lojet im bar einwot kein ekan ko ie im bedbed eo. Jabdewot armej ejjab maron etal nan ijin elane ejjelok melim ak men ko erlok wot jen USAG-KA. Elane elon kajitok, jouj im kurlok RGNEXT ilo 480-8855.

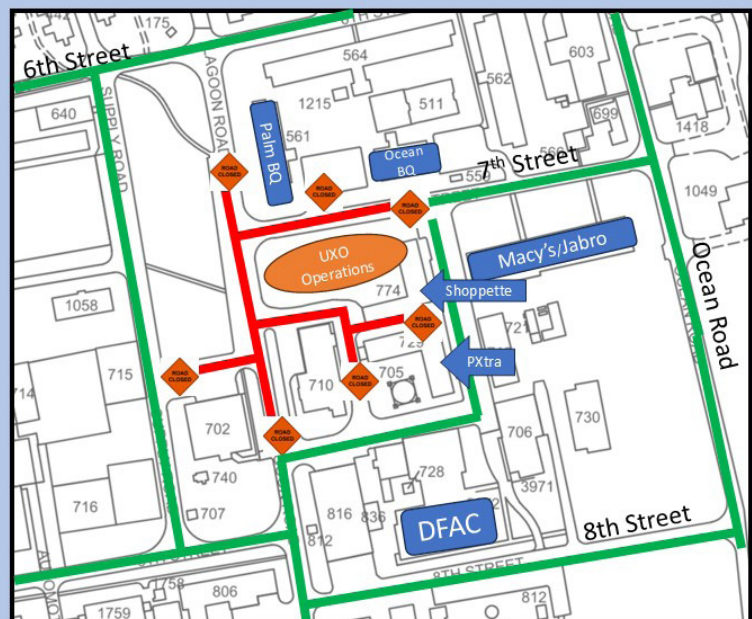
Public Notice – UXO Clearance Operations

- The following facilities must be vacated NLT 1900 each night Monday-Friday 17 Jan thru 17 May
 - Shoppette – Building 774
 - PXtra– Building 729
- Palm BQ residents should only use the Northern entry/exit doors
- Ocean BQ residents should only use the Eastern entry/exit doors



Road Closures

- **Do not cross any barriers. If the barriers remain up after 0400, do not cross.**
- UXO Clearance Operations are ongoing in the area overnight
- Lagoon Road and 7th Street adjacent as shown will be closed
- Roads in red will be closed each night Monday-Friday 17 Jan thru 17 May
- Roads will be closed from 1900 - 0400
- Ocean road is unaffected
- Any questions reach out to Mike Flinchbaugh at 480-4255



EARN YOUR TEAM KWAJ TAB

1. Attend Col. Morgan's TEAM KWAJ brief (either Teammate or Community version), read and adhere to the TEAM KWAJ Teammate Pact, presented at initial town halls, and periodically thereafter.
2. Attend the Island Newcomer's Briefing.
3. Attend at least one group greeting at air terminal for personnel arriving on island. Make them feel welcome and show them we are happy they are on Kwaj with us.
4. Attend at least two garrison after-hours team-building or social events (TEAM KWAJ Happy Hour, Commander's Call, Hail/Farewell).
5. Attend at least two TEAM KWAJ PT/Wellness sessions. Become a regular attendee!
6. Visit Marshallese Cultural Center in last 3 months prior to tab award.
7. Visit Ebeye, Third island or Majuro in last 3 months prior to tab, use a Marshallese phrase or two and visit a store/restaurant.
8. Tell three co-workers how to earn the TEAM KWAJ tab.
9. Swim, snorkel, boat or paddle on the lagoon at least once with a teammate.
10. Complete the TEAM KWAJ Circle-island 6-mile ruck march/walk/bike and read all historic battlefield markers. This is an organized USAG-KA hosted event several times per year.
11. Mission Partner wild card event—discuss with your supervisor any additional organizational requirement. Could be knowledge-based, achievement-based, or physical challenge.
12. Final event, "Board of Review" -- meet with Col. Morgan face-to-face individually or in a small group with all requirements fulfilled. Schedule with garrison front office. Discussion items may include but are not limited to; TEAM KWAJ pact - "Healthy Community of Excellence," Kwaj history, Marshallese culture, military/strategic missions and their significance, and future operational potential.

Once you have the first 11 items completed, contact Terri Wilson at 480-4322 or at terri.l.wilson20.civ@army.mil to set up a date/time with the commander for the final event.



Check out more news and entertainment about Kwaj life on the USAG-KA YouTube Channel, at <https://www.youtube.com/USArmyGarrisonKwajaleinAtoll>.

FOR KWAJ COMMAND TEAM INFO & UPDATES



TEAM KWAJ COMMANDER



@TeamKwajCommander

KEEP FOLLOWING



U.S. ARMY GARRISON - KWAJALEIN ATOLL



NASA ASTRONAUT ANDREW "DREW" MORGAN



@AstroDrewMorgan

Kwajalein



MIA Project

NEVER FORGET.

<https://kwajaleinmiaproject.us/>

COMMUNITY CLASSIFIEDS

Submit Announcements to the Roller Channel and The Kwajalein Hourglass

OPEN CALL FOR ANNOUNCEMENTS
The island community is invited to submit listings for jobs (Hourglass classifieds only), events and for sale items; announcements; department trainings; safety updates; public service messages; and thank-you messages.

Preparing Your Message

For questions about your messaging, please reach out to the USAG-KA Public Affairs Office at 480-4848.

Ads should always include a point of contact, phone number and/or email address.

Private parties, fundraisers and events requesting and/or accepting donations are typically not allowed for publication per AR 360-1. Fundraisers and support activities for private and schools-based organizations, scouting groups, civic clubs and other listings may be subject to a legal counsel review to determine their eligibility for publication.

Formatting Your Listings

For more information, reach out to the USAG-KA Command team through the USAG-KA Facebook page.

It is recommended that graphical advertisements and announcements intended for the Hourglass and the AFN Roller Channel be formatted as PowerPoint slides.

Graphic designers are asked to maintain a generous margin (.75-1-inch) around all sides and to size fonts no smaller than pt. 20.

If your Roller Channel advertisement requires a special expiration date, please note this for the Roller team in the body of your message.

Deadlines for Submissions

Send advertisements for the Kwajalein Hourglass and the AFN Roller Channel to kwajaleinhourglass@gov2x.com on Wednesdays by close of business/Thursday morning.

Roller Channel ads are accepted on a rolling basis by 4 p.m. for a mid-week and late-week update. Ads received after 4 p.m. will be loaded in the next update. Please ensure you submit ads in good time to ensure timely upload.



Contact the USAG-KA Sexual Harassment/ Assault Response and Prevention Victim Advocate

Chief Warrant Officer 2 Nate Elkins
SHARP Victim Advocate
Work: 480-0660 or 480-3421
USAG-KA SHARP Pager:
808-580-3241
DOD SAFE Helpline: 877-995-5247

completed by your human resources representative before making an appointment. Bring two forms of government-issued IDs with you. Walk-in appointments are welcome, but there may be a wait. CAC Office Hours, Bldg. 835, are Tuesday – Saturday, 8 a.m. – 4 p.m.; (Lunch: noon - 1 p.m.). Call 480-8496.

Demolition at the Capt. Louis S. Zamperini Dining Facility. Phase three of the Zamperini DFAC demo has begun and is projected to be finished March 2026 for the dining and serving area. Be careful around the dining facility during the phases.

Do Not Take Cultural Artifacts. It is illegal to remove cultural resources from the atoll. This includes any protected species, unexploded ordnance, WWII-era artifacts and ancient Marshallese artifacts. These resources are protected under U.S. federal and RMI law. Contact the Kwajalein Archaeology Office at 480-8867.

Driver's Licensing Classes. Kwaj: Every Wednesday, Bldg. 856, Rm. 101, 9 a.m. for RMI, 1 p.m. for Expats. Preregistration is encouraged. Space is limited. Roi Classes: Every second Friday in C-building. 9 a.m. - RMI, 11 a.m. for Expats. No preregistration required. To register, email wilson.kaisha@gov2x.com, audrey.hughes@gov2x.com, and/or george.parker3@gov2x.com, or call 480-3376.

Emergency Management. Visit the USAG-KA Emergency Management webpage, <https://home.army.mil/kwajalein/index.php/my-fort-EM>; 2) Click on "Mass Notification"; 3) Follow

HELP WANTED

To apply for government employment opportunities on U.S. Army Garrison-Kwajalein Atoll and worldwide, visit usajobs.gov.

Atmospheric Science Technology, LLC, has an immediate opening for a meteorologist. This full-time, salaried position is located on Kwajalein. Eligible applicants will have a master's or bachelor's degree in meteorology/a related field, with two years of forecasting experience. Experience in Doppler or dual-polarized weather radar or satellite interpretation is preferred. To apply or learn more, contact Dottie Thomas, director of human resources, at dottiethomas@n8tivesyn-ergy.com; call (256) 836-5316 direct and visit <https://recruiting.paylocity.com/recruiting/jobs/Details/2337159/Atmospheric-Science-Technology-LLC/Meteorologist-Kwajalein-Island>.

Kikaha Solutions 30th Signal Battalion Network Enterprise Center, U.S. Army Garrison-Kwajalein Atoll is now partnered with Kikaha Solutions. Please visit www.kikahasolutions.com for

more information and to submit applications. To navigate the site, click on "Careers," scroll down, and click on "search opportunities and apply." Enter job code 11326 and select search.

ANNOUNCEMENTS

AFH Construction Is Ongoing. Nan, Inc. Construction is scheduled to commence the telecommunication scope of work for the FY21 Kwajalein Army Family Housing project in our community from February – September 2024. Residents and commuters should be aware of possible changes in traffic patterns and to plan their routes accordingly. Nan, Inc. Construction is committed to minimizing any inconveniences, and we will strive to ensure a smooth and efficient construction process.

ArMA. Log in to ArMa, the Army Maintenance Application, to report issues for all buildings maintained by the Department of Public Works. Contact Public Works at 480-3550.

CAC Office. Before your visit to the Common Access Card Office, ensure all paperwork is

the registration instructions.

E-Wareness: It is each driver's responsibility to ensure vehicles are not leaking fluids other than air conditioning condensate. Call 911 to report spills and arrange with automotive for routine maintenance. Please call Environmental at 480-0722 with questions. Ej an ri-kator eo eddo non lolorjake bwe wa eo ejjab leak jabdwot oil ijelak in drennin air condition eo jen wa eo. Ne elon jabdwot leak/lutok in oil jen wa eo, Kiir 911 non report- e lutok eo. Ak kiir Environmental ilo 480-0722 non kajitok.

Fire Safety Tips. Some pets are chewers. Watch pets to make sure they don't chew through electrical cords. Pets are curious. They may bump into, turn on, or knock over cooking equipment. Keep pets away from stoves and countertops. Make sure pets are included in your family's fire evacuation plan. Build an evacuation kit for each pet in your household.

Flights. Please note that all flights are subject to change. For the latest update on your flights on United, ATI or Air Marshall Islands: ATI: 480-2169; AMI: 480-3469; United: 480-4852 or 1-800-UNITED1; Air Terminal Services: 480-2660; Flight Information Recording: 480-3589

UA Schedule Effective Now: Monday and Friday—UA 155 (HNL); Check-in 2 – 4:50 p.m.; Wednesday—UA 133 (HNL); Check-in 2 – 4:15 p.m.; Tuesday and Saturday—UA 154 (GUM); Check-in 10:45 – 11:15 a.m.

FlyRoi Reservations. To schedule reservations and for correspondence related to flights, email LCVKwajaleinFlyRoi@versar.com.

How to dress in the RMI. Out of respect for the Marshallese culture, residents are asked to dress appropriately when visiting Ebeye, Third Island, or anywhere within Kwajalein Atoll. Women should wear clothing to cover shoulders and knees. None are permitted to wear shorts when visiting churches on Ebeye. Men should wear long slacks to church.

Kwaj Small Boat Marina hours are 7:30 a.m. – 6 p.m. Friday through Monday, and on holidays, excluding Thanksgiving and Christmas. Morning boat reservation times are from 7:30 a.m. – noon. Afternoon boat reservations are from 1 – 5 p.m.

Not Feeling Well? Call 480-2223 to make an appointment for a COVID-19 test, Tuesday through Saturday from 7:30 a.m. – 4:30 p.m. If you are not feeling well, please wear a mask when you are around others in the community.

Operational Security. See something, say something. All employees on USAG-KA are required to receive annual Threat Awareness and Reporting Program training provided by KRO; Reporting: Report suspicious activities to the Kwajalein Resident Office at 480-9859/1293/8006 at Bldg. 1163.

PCS & Vacation Tips. Notify the post office before leaving for 30 days or PCS'ing. Per DOD 4525.6-M, mail is only allowed to be held for 30 days with or without prior notice. Mail is considered unclaimed on day 31 and will be returned to the sender. Email the post office to authorize pick up for your mail and packages. When PCS'ing, provide a forwarding address. Contact James



KWAJALEIN HOSPITAL



Acuity International is pleased to begin providing services at Kwajalein Hospital on October 1, 2024.

There will be no interruption in the current level of medical or dental services.

To reach the Hospital, please see contacts to the right:

Occupational Health Services

kwajohdteam@acuityinternational.com

Dental Clinic

kwajdentalclinic@acuityinternational.com

Veterinary Clinic

kwajvetclinic@acuityinternational.com

Smith with questions at 480-3461 and james.e.smith2295@army.mil.

Salon Walk-Ins. Surfside Salon Walk-In Appointments are available on Fridays from 1:30 - 6 p.m.

Smoking. USAG-KA, smoking is permitted in designated smoking areas only. Smoking and cigarette butt receptacles must be at least 50 feet from the entrance of facilities.

Taxi Service. Call 480-TAXI (8294) or 3341 to book your ride at least 24 hours in advance of check-in time.

Upcoming Changes to Entry/Exit Procedures. Beginning June 1, please send all access requests to USAG-KA Entry and Exit at U.S. Army Bucholz AAF ID-Pacific Mailbox USAG-KA E-E: usarmy.bucholz.id-pacific.mbx.usag0ka-e-e@army.mil. The current inbox of U.S. Army Bucholz AAF 311 Sig Cmd Mailbox USAG PMO will be monitored for 30 days after the initial changeover to ensure a smooth transition. Your patience is appreciated during this transition period.

Millican Family Pool Hours. Closed for cleaning on Thursdays. Open noon to 5 p.m. Tuesdays, Wednesdays, Fridays and Saturdays. Open 11 a.m. to 5 p.m. Sundays and Mondays.

The NEC Testing Center Is Open to the Community - Giving you the head start you need to thrive! - Open Tuesday through Saturday by appointment
Authorized Pearson VUE Test Center. Schedule A test Today!
NEC testing Center, 480-4344, FN 1008-131
ACUITY International
Job Postings for this contract have "Marshall Islands" in the job title.
<https://acuityinternational.com/careers/>
Anyone interested please reach out directly to Melani.Gebhardt@acuityinternational.com

All-Year Licensing Classes
Kwajalein: Wednesdays, Bldg 856/Rm 101
Roi Namur: Every 2nd Wednesday, Bldg C
• 0900 hrs (RMI) • 1300 hrs (Expats)
REGISTRATION - None required for Roi Namur. Kwajalein registration encouraged as space is limited. Call 480-3366 or email: George.Parker3@gov2x.com
Kaisha.Wilson@gov2x.com





U.S. ARMY PHOTOS BY EDMOND THOMAS

COMMUNITY

PASS THE WORD! JOIN THE KWAJALEIN HOURGLASS EMAIL DISTRO LIST

HOURGLASS REPORT

"Oh, hi, Melissa!" said a friendly passerby at the New Years Eve MWR event at Emon Beach. "I keep seeing you at the events with your camera. I've been meaning to ask what you were up to."

Melissa looked up and turned her attention to the statuesque giantess, her blond curls tossing gently under the steady breeze. "I'm taking photos for the Kwajalein Newsletter."

"Really? Are they still doing that?" said the giantess with widen eyes. "I haven't seen the Hourglass in a while. You know, they used to email it straight to me." Melissa reached into her camera bag and pulled out a colorful blue promo card.

"Here you go. Just send your email address over to kwajaleinhourglass@gov2x.com. In the subject line type "Add me to the Kwajalein Hourglass Email Distro List!" and we'll get you added to

our email distro, so you can get a copy of the latest issue every week."

"I would love that!" The giantess tucked the card into the right back pocket of her jeans. "Would you like me to tell people about it? I can do that."

Melissa beamed. "That would be lovely! Any little bit of help counts towards greater community engagement."

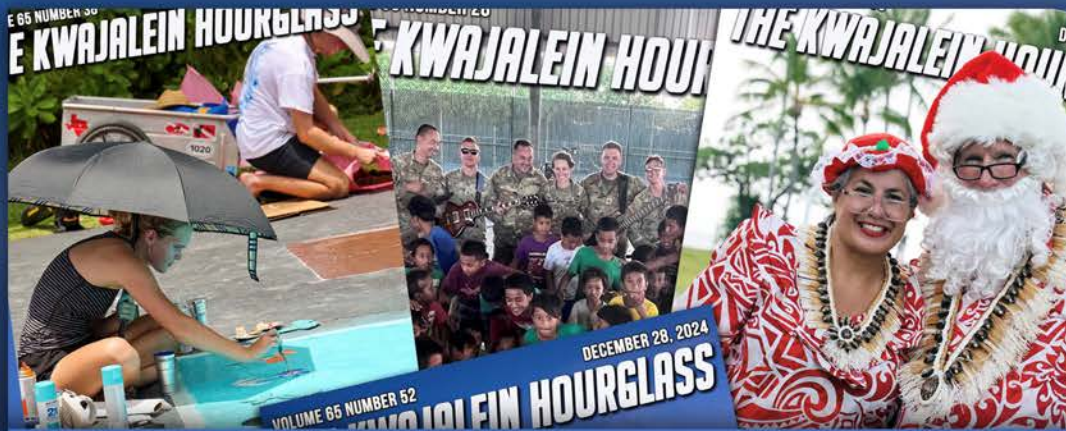
This, of course, includes you, Dear Reader. Please let your family members, friends and work colleagues know that they, too, can get the weekly Kwajalein Hourglass in their email inbox.

Spread the word!



U.S. ARMY PHOTOS BY MELISSA DETHLEFSEN

Want to receive timely links and files for the very latest Kwajalein Hourglass Newsletter?



THE KWAJALEIN HOURGLASS



Get on our Email Distribution List! Just send an email to:
kwajaleinhourglass@gov2x.com
Subject: Add me to the Kwajalein Hourglass Email Distro List!

WHAT COULD THIS BE? 🤔



SEND YOUR GUESS TO
THE PAO EMAIL BELOW!

Kwajalein Atoll is a significant archeological location. If you find anything, take a photo, remember where it is and notify the Public Affairs officer at Sherman.hogue.civ@army.mil but do not pick up, or remove the object.



Projects

Construction

Services

Events

Pets

Community Information Exchange
17 January

at the

Kwajalein High School

Multipurpose Room

6:30pm till 7:30pm

TEAM KWAJ – ONE TEAM

WEEKLY TROPICAL WEATHER THREAT OUTLOOK

RTS WEATHER STATION STAFF

Discussion:

So far in January, we have received 0.53 inches of rain through yesterday, which is 0.50 inches below normal for the month and 2025. We are now in the heart of the windy dry season (Ellap Kutu) here in the central RMI, and can expect only an average of four inches this month, down from the eight inches average for December. We experienced no thunderstorm days during the last seven days, as the vertical dynamics of the atmospheric column remained mostly negative over the last week for lightning development. This is defined as an "in situ" lightning strike within five miles of the weather station. The Intertropical Convergence Zone (ITCZ) is south of the RMI, taking up its normal dry season position closer to the Equator. This positioning will keep shower coverage at mostly the stray levels for the next seven days. Showers that do occur will be fleeting in nature, mainly the result of surges and perturbations in the trade-wind flow. The Madden-Julian Oscillation (MJO) is in a current moderate negative phase over the Marshall Islands, entering mid-January. The negative

phase of this global tropical circulation basically has the effect of repressing shower coverage for our part of the Pacific, when the ITCZ is near the central RMI. The El Nino Southern Oscillation (ENSO) is in mild La Nina conditions with the central Pacific (ocean to the east of the RMI) actually about -0.5 degrees C below normal. Cooler temperatures in the Pacific to the east of the RMI work to temper our shower activity, as almost all of our precipitation producers come from the east, this cool anomaly in the central Pacific also tends to work against tropical cyclone development to the east of the RMI, where it could pose a threat to our region. We are also out of the tropical cyclone season as a whole for the western Pacific with the northern winter now climatologically in place.

Tropical Cyclones:

No significant tropical cyclone activity expected to affect anywhere in Micronesia, the Mariana Islands, Wake Island or Hawai'i. We are now in climatological winter for the northwest Pacific, which generally bring a considerable decline in tropical cyclone activity.

Damaging West Winds /

Westerly Swell:

None expected. Micronesia is northeast trade wind dominant.

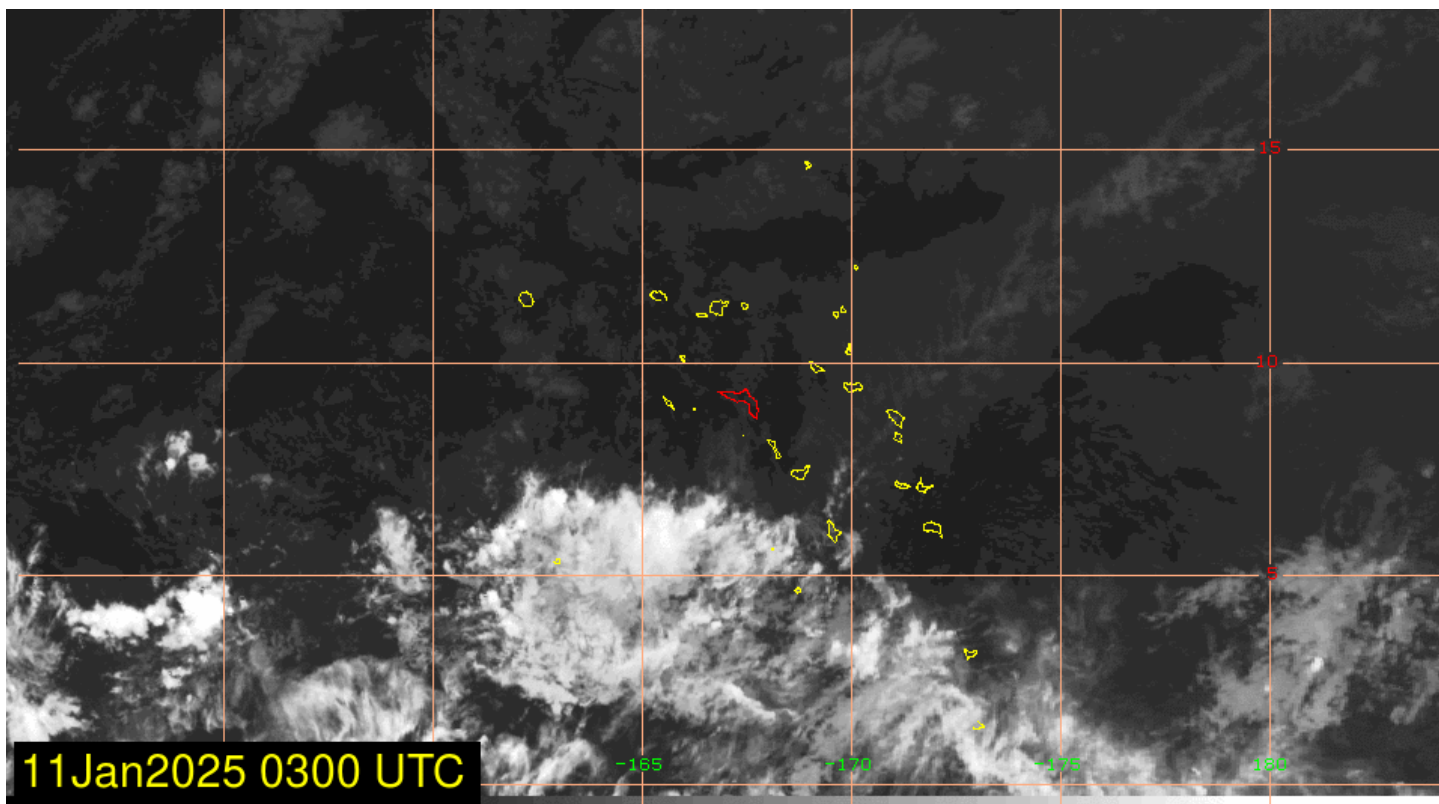
Swell / Tide Inundation for Kwajalein Atoll and Wake Island:

Moving into mid-January, will see us wax to a full-moon on the 13th. There will be high tides of four feet or higher from the 11th to the 18th with a peak of 4.6 feet on the 14th and 15th, before waning to the neap tide phase and half-moon on the 21st. Trade-winds out of the northeast will be in Windy Season fashion, and sustain in the middle to upper teens and some higher clear-air gusts with tomorrow being the peak, and Monday night into Tuesday being another peak that we will be watching. We have issued a Small Craft Advisory for today and Tomorrow, with winds on the open-lagoon and ocean routinely sustaining over 20 knots for long periods of time. We will be watching for a possible return to SCA conditions on the second half of Monday into Tuesday as well. We are in a High Surf Advisory for today and more so tomorrow with combined seas expected to be as high as 12 feet for the ocean just seaward of the reef's edge at Roi-Namur and the eastern

side of the atoll down to Kwajalein Island. There will be some splash-over during high tides, mainly at about mid-day tomorrow.

Purpose: This weekly briefing is delivered Thursday mornings to island leadership. The intention of this briefing is to provide situational awareness of weather events that may interrupt operations and transportation around Kwajalein, to/from Hawaii and Guam, and in the Wake vicinity. The main threat assessed in this brief is existing and potential development of tropical cyclone activity. This brief also provides an outlook of abnormal winds, sea state, and precipitation guidance for next 7 days around the Kwajalein Atoll. The distribution list will also receive updates on any developing tropical cyclone activity in the Kwajalein region that occur between the weekly outlook product.





WEATHER

RTS WEATHER STATION STAFF

WEATHER DISCUSSION

Dry and windy conditions appear likely to persist through the end of the week and the upcoming weekend. The weather pattern will be dominated by strong subtropical high-pressure systems to the north providing a tight pressure gradient across the RMI, resulting in elevated wind speeds. Wind speeds will be in the upper teens to as high as the low 20s throughout this time period, with frequent clear-air gusts in the low-mid 20s and higher gusts, sometimes as high as 30 knots, possible near showers. These winds will be strong enough to reach or exceed Small

Craft Advisory (SCA) criteria at least some of the time,, especially out in the open lagoon. Conditions may be hazardous for small vessels, especially later on Monday when the winds look to increase a bit. Combined seas on the open ocean will continue to be quite high. They should remain just below High Surf Advisory (HSA) criteria, but residents should still exercise caution around north and east-facing shores. Additionally, falling palm fronds and coconuts may pose a hazard as well. As for precipitation, shower activity looks to remain minimal, with the subtropical high-pressure systems promoting dry, sinking air throughout the atmospheric column. The only shower chances will be generated by areas of localized trade wind convergence, especially

during the late-night and early morning hours when nocturnal instability peaks. Thunderstorms appear unlikely, as low-level convergence will be insufficient for deep convection, in spite of colder temperatures at the upper levels.

SATURDAY

Mostly sunny with stray showers, especially early. Winds will be NE-E at 16-21 knots with frequent gusts in the low-mid 20s and higher gusts near showers.

SUNDAY

Mostly sunny with stray showers, especially early. Winds will be NE-E at 16-11 knots with frequent gusts in the low-mid 20s and higher gusts near showers.

MONDAY


Partly sunny with stray to isolated showers, especially early.

Winds will be NE-E at 18-23 knots with frequent gusts in the mid-20s and gusts around 30 knots possible near showers.

NEXT WEEK

The pattern of dry conditions and elevated winds looks to continue throughout

much of next week as well. Shower activity will continue to be limited to primarily the late-night and early morning hours. Winds will remain quite elevated, especially on Tuesday when conditions look to remain hazardous for small vessels.

 SUN-MOON-TIDES				
	SUNRISE SUNSET	MOONRISE MOONSET	HIGH TIDE	LOW TIDE
SUNDAY	7:08 a.m. 6:47 p.m.	5:05 p.m. 5:12 a.m.	3:19 a.m. 2.8' 3:31 p.m. 4.3'	9:00 a.m. 0.2' 10:08 p.m. -0.4'
MONDAY	7:08 a.m. 6:48 p.m.	6:06 p.m. 6:14 a.m.	4:03 a.m. 3.0' 4:12 p.m. 4.5'	9:45 a.m. -0.1' 10:45 p.m. -0.6'
TUESDAY	7:08 a.m. 6:48 p.m.	7:05 p.m. 7:11 a.m.	4:40 a.m. 3.2' 4:49 p.m. 4.6'	10:24 a.m. -0.3' 11:18 p.m. -0.6'
WEDNESDAY	7:08 a.m. 6:48 p.m.	8:01 p.m. 8:03 a.m.	5:14 a.m. 3.3' 5:23 p.m. 4.6'	11:00 a.m. -0.3' 11:49 p.m. -0.6'
THURSDAY	7:09 a.m. 6:49 p.m.	8:52 p.m. 8:50 a.m.	5:46 a.m. 3.4' 5:55 p.m. 4.5'	11:34 a.m. -0.3' -----
FRIDAY	7:09 a.m. 6:49 p.m.	9:39 p.m. 9:32 a.m.	6:16 a.m. 3.4' 6:24 p.m. 4.3'	12:19 a.m. -0.5' 12:06 p.m. -0.2'
JANUARY 18	7:09 a.m. 6:50 p.m.	10:24 p.m. 10:10 a.m.	6:46 a.m. 3.4' 6:52 p.m. 4.0'	12:47 a.m. -0.3' 12:37 p.m. 0.0'

FOR QUESTIONS ABOUT ISLAND LIFE AND ARMY REGULATIONS, PLEASE CALL THE COMMANDER'S HOTLINE AT 480-1098.

Until Next Week!

