

VOLUME 65 NUMBER 6

FEBRUARY 10, 2024

# THE KWAJALEIN HOURGLASS



JAN POTTER GETS READY FOR MORE RECOVERY WORK ON THE ROI-NAMUR OUTRIGGER CLUB FOLLOWING THE WEATHER-DRIVEN INUNDATION OF THE ISLAND ON JAN. 20.



JESSICA DAMBRUCH

AMERICA'S RANGE 2  
AND ITS CRITICAL MISSION

OPERATION FLINTLOCK 3  
80 YEARS COMMEMORATED

KWAJ HOJNORS PAST 4  
AND LOOKS TO THE FUTURE





MIT LL PHOTO

# AMERICA'S RANGE

## THE CRITICAL MISSION OF THE REAGAN TEST SITE

### // RTS COMMAND BRIEF

**The Ronald Reagan** Ballistic Missile Defense Test Site is the nation's only long-range land impact test site. We provide world-renowned test range capabilities for the continued development of future weapons and space systems, empowering our nation's leaders with the deterrence that citizens deserve.

The value added by our range extends beyond the Department of Defense and the Indo-Pacific region to our nations and allies all over the world. The importance of our testing cannot be overstated. We support the free and open Indo-Pacific with deterrence.

RTS is remote, but we are by no means disconnected. RTS has a critical mission. With its sensor suite and land impact capability, it is the only test range of its kind.

RTS provides an honest look at innovations in development. Through our data and testing practice, we con-

firm the works of our scientists. We inform decisions funded by Congress. We demonstrate the protections afforded to our citizens through the Department of Defense.

More so than ever before, we must recognize the critical importance of RTS. Our mission on this range is just as vital today as it was 60 years ago. Without the support of our leadership, this mission

and the value we provide as a range goes away. Further, without our leaders, our range receives neither the funding nor the attention that it needs.

Our community advises the leadership who grant the funding to test and perfect our weapons systems. Those systems are getting smarter and faster, and they need space for testing. They must be examined with a highly technical approach. We provide that. We are the only place that does it.

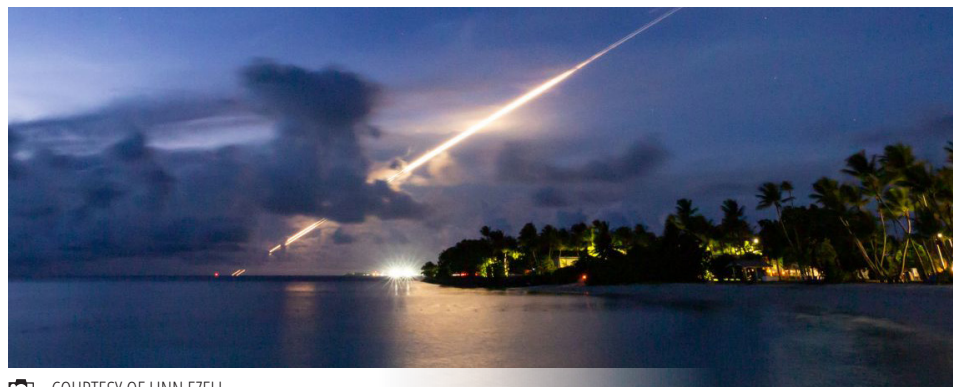
The range is comprised of some of our most highly trained, dedicated and exceptional talents. Their combined years of experience are unsurpassed and have strengthened decades of technical innovation in the defense of peace and security.

It is easy to look at other defense efforts that may seem more important, but RTS is a critical part of our future in defense and space. This is a fact that is undisputed.

We have an opportunity to improve our overall mission set and our best days are ahead of us. Of all the stories we could share about the mission on Kwajalein, we must be sure we share the story of America's range. RTS is critical to our nation.

**Lt. Col. Casey Rumpfelt**  
Range Director, Ronald Reagan Ballistic Missile Defense Test Site

*This interview was featured by AFN-Kwajalein in late 2023. It has been edited for publication.*



COURTESY OF LINN EZELL

## THE KWAJALEIN HOURGLASS

The Kwajalein Hourglass is named for the insignia of the U.S. Army's 7th Infantry Division, which liberated the island from the forces of Imperial Japan on Feb. 4, 1944. The Kwajalein Hourglass is an authorized publication for military personnel, federal employees, contractor workers and their families assigned to U.S. Army Garrison-Kwajalein Atoll.

Contents of the Hourglass are not necessarily official views of, or endorsed by, the U.S. Government, Department of Defense, Department of the Army or USAG-KA. It is published Saturdays in accordance with Army Regulation 360-1.  
Phone: Defense Switching Network: 315-480-5169  
Local phone: 480-5169

Garrison Commander.....Col. Drew Morgan  
Garrison CSM.....Command Sgt. Maj. Ernest Miller  
Public Affairs Officer.....Mike Brantley  
Editor.....Jessica "JD" Dambruch



# USAG-KA COMMEMORATES OPERATION FLINTLOCK DURING 80TH ANNIVERSARY

U.S. AIR FORCE PHOTO BY U.S. AIR FORCE STAFF SGT. JANAE JENSEN

## EXTERNAL REPORT

By U.S. Air Force Staff Sgt. JaNae Jensen  
American Forces Network - Pacific

The community of U.S. Army Garrison Kwajalein Atoll paid tribute during operation FLINTLOCK's 80th Anniversary, Jan. 31 – Feb. 4, to honor those who served and assisted in liberating the Marshall Islands during World War II.

Operation FLINTLOCK is considered the largest amphibious assault of WWII, directly contributing to the allied defeat of the Imperial Japanese Army and Navy.

"A primary objective of this week's commemoration is telling Kwajalein's story," said U.S. Army Col. Andrew Morgan, USAG-KA commander. "Eight decades ago, brave Americans, several hundred of whom who gave the ultimate sacrifice, embarked on a journey that changed the destiny of these islands forever."

An honorable carry was conducted during the commemoration ceremony to transfer possible remains of an American WWII service member which were discovered in the Pacific waters near Kwajalein. The remains arrived at Joint Base Pearl Harbor Hickam, Hawaii, for potential identification and to be returned to their next-of-kin.

On Feb. 1, 1944, the U.S. Army's 7th Infantry Division arrived at Kwajalein Atoll, and the 4th Marine Division landed on the beaches of the twin islands of Roi-Namur. By Feb. 2, 1944, Roi-Namur was captured by Marine

Forces, and Kwajalein's capture by Soldiers followed suit on Feb. 4, 1944.

Almost exactly 80 years after the Marines stepped foot on the sands of Roi-Namur's Green Beach, U.S. Marine Corps Sgt. Maj. Christopher J. Adams, command senior enlisted leader of 4th Marine Division, visited Roi-Namur Feb. 3, 2024. Adams felt honored to be standing on the same sand which is cemented in 4th Marine Division history.

"To be quite honest with you, it's surreal," said Adams. "During the commemoration ceremony, I spoke about how this is 4th Marine's first combat operation—they came from the United States directly to combat. You truly

appreciate the layout of the land and what those Marines accomplished on that very day."

The anniversary follows the recent wave that damaged the island of Roi-Namur late January. The community's dedication to restore the island fortifies their name "Team Kwaj," and demonstrates the strong will and resiliency Kwajalein has shown for the last 80 years.

"Kwajalein, this entire atoll and everything in it, is important to our national security," said Morgan. "This is our home. We are invested in returning Roi-Namur back to normal and making it important to America."



U.S. AIR FORCE PHOTO BY U.S. AIR FORCE STAFF SGT. JANAE JENSEN

*Annalise Castillo, U.S. Army Garrison Kwajalein Military Welfare and Recreation technician, instructs a sunrise yoga class, Feb. 1, 2024, at the Corlett Recreation Center, Kwajalein Atoll, in the Republic of the Marshall Islands. The yoga class was held in honor of Operation Flintlock's 80th Anniversary.*





## KWAJALEIN HONORS THE PAST WHILE LOOKING TOWARD THE FUTURE

From left: United States Army Garrison-Kwajalein Atoll Commander Col. Drew Morgan; Marine Corps Sgt. Maj. Christopher Adams, 4th Marine Division; and Republic of the Marshall Islands Sen. Kitlang Kabua participate in the Feb. 2 ceremony commemorating the 80th anniversary of Operation Flintlock.

BY MIKE BRANTLEY / USAG-KA PUBLIC AFFAIRS

With the inundation events on the island of Roi-Namur and the continuing recovery efforts from the waves that struck Jan. 20, 2024 still fresh on everyone's mind, the U.S. Army Garrison-Kwajalein Atoll hosted the 80th Anniversary Commemoration for Operation Flintlock – the operation that liberated the atoll in 1944.

The five-day event began Jan. 31 with a showing of the movie, “Unbroken,” the life history of Louis Zamperini, from U.S. Olympic hero to prisoner of war held captive on Kwajalein to his eventual return home. The dining facility here on Kwajalein is named in his honor.

A primary objective of this week's commemoration is “telling Kwaj's story,” said USAG-KA Commander Col. Drew Morgan. “Kwajalein Atoll is important to our Nation and this is our home—truths originating 80 years ago this week that have endured the test of time.”

Morgan said that the missions that defined this place for decades—space and missile defense testing—underscore the one-of-a-kind capabilities and geographical position that make this point on the globe so unique. “This week's commemoration is a reminder that 1944 was the genesis of Kwajalein and Roi Namur's importance to America.”

On Feb. 1, a rarely-seen Marshallese dance troupe, the Jobwa Stick Dancers, performed for the crowd assembled at the historic Richardson Theater. Following the performance, historians Dr. Mi-



U.S. ARMY PHOTOS BY JESSICA DAMBRUCH

Onstage Feb. 2 at the Richardson Theater for the 80th anniversary commemoration of Operation Flintlock, Republic of the Marshall Islands Sen. Kitlang Kabua takes the mic to address members of the atoll community.

chael Krivdo and Dr. Tim Francis spoke about the 7th Infantry Division's day-by-day fight across Kwajalein island and the 4th Marine Division's day-by-day fight across Roi and Namur in 1944, with a slide presentation.

Feb. 2 saw the Opening Ceremony and Kwajalein Battlefield Tour, hosted by the historians for the community, while Feb. 3 saw a tour of the devastated island of Roi-Namur by Maj. Gen. Reginald Neal, deputy commanding general, U.S. Army Pacific, Morgan and Lt. Col. Casey Rumpf, Reagan Test Site direc-

tor. Neal was one of the invited guests for the commemoration but took time to visit the mission partners and Marshallese workforce on Roi-Namur who are heading up recovery efforts to get the island and its workforce back to pre-wave status.

Speaking at the Opening Ceremony on Feb. 2, Morgan said, “This is the 80th anniversary of a momentous military operation that not only shaped the course of history but also set the Marshall Islands on the path to liberation and eventual statehood as an indepen-





U.S. ARMY PHOTOS BY JESSICA DAMBRUCH

1) Marshallese dancers from Ebeye performed the Jobwa Stick Dance in the 80th Anniversary Commemoration of Operation Flintlock at the Richardson Theater, Feb. 1. 2) United States Army Garrison-Kwajalein Atoll Command Sgt. Maj. Ernest Miller, senior enlisted advisor, salutes the transfer case that holds the remains of an American serviceman from World War II. During the Feb. 2 ceremony, the case was handed over to Dr. Denise To from the Defense POW/MIA Accounting Agency in Hawaii. She escorted the case and departed Kwajalein by plane a few hours later.

dent Republic. It laid the foundation for a future where freedom and resilience became defining characteristics of both this remarkable community and a free and open Indo-Pacific region.”

Several special guests attended the Opening Ceremony, to include Marine Corps Sgt. Maj. Christopher Adams, 4th Marine Division, senior enlisted leader, who represented his Division that fought in 1944 to liberate the islands of Roi and Namur; Staff Sgt. Effie Mahugh, a public affairs noncommissioned officer from the 7th Infantry Division

at Joint Base Lewis-McChord, Washington, representing her Division that liberated Kwajalein island in 1944; and Sen. Kitlang Kabua, who shared with the crowd how a family member was shown kindness on Roi and Namur during Operation Flintlock.

Sen. Kabua’s great-great grandmother was shown in a photograph from Roi, sitting on a stretcher, head turned up as a serviceman poured water from a canteen for her to drink following the taking of Roi and Namur.

Reflecting on that day, Sen. Kabua

said that she wanted to tell the story from the RMI side.

“We have so many historians and information that can illustrate the war from the American perspective and the Japanese perspective,” said Kabua, “we don’t have enough information from the RMI perspective because we come from a culture that is oral—stories are passed down (from one generation to the next).

“When I saw that picture, I recognized it,” she said. “I wanted to show what the other Kwajalein families had felt through the stories that they’d heard from their elders.

Kabua added, “We are still committed to peace and being partners with our allies, and the U.S.—our closest partnership that we Marshallese have—is something that we want to continue, as one.”

Morgan added that, “Eight decades ago, brave Americans, several hundred of whom made the ultimate sacrifice, embarked on a journey that changed the destiny of these islands forever. Today, as we look back with reverence and gratitude for those sacrifices, our hearts are heavy with a new responsibility. Two weeks ago a half-dozen terrifying waves flooded most of Roi-Namur. They not only tested the mettle of our people, but also touched the very core of our shared commitment to one another—that community bond we call TEAM KWAJ.

“In times of hardship, it’s our unity of purpose and the strength of our community that brings us together on our beloved Pacific-island home. Our community faces a degree of uncertainty and our Roi-Namur workforce the emotional toll of displacement. Your strength in the face of adversity and the heroism demonstrated over the last two weeks exemplify the spirit of TEAM KWAJ—the same spirit that fueled American Soldiers, Marines, Sailors and Airmen to victory in Operation FLINTLOCK. Our duty as Team Kwaj-mates, forward-stationed on this small island fortress, is not only to commemorate the past but also to stand in solidarity in the face of present day challenges.

“We cannot lose sight of the shared responsibility with our allies and partners in the region, most notably our Marshallese sisters and brothers, who are so robustly represented here today,” said Morgan. “We extend a hand of support and comfort to Roi-Namur and Third Island, reminding them that, by necessity, we face all trials and tribulations in this remote place, together.”



# OPERATION FLINTLOCK, THE INVASION OF THE MARSHALL ISLANDS, JANUARY-FEBRUARY 1944

EXTERNAL REPORT

By Dr. Mike Krivdo  
Feb. 1, 2024

**This week marks** the 80th Anniversary of Operation FLINTLOCK, the invasion of the Marshall Islands during WWII. This operation, at the time the largest amphibious assault of the war, was significant and had far-reaching effects that directly contributed to the allied defeat of the Imperial Japanese Army and Navy in the Pacific. In it, both the Army and Marine Corps demonstrated the soundness of American amphibious operation doctrine, and revealed that the issues of poor planning and preparation seen in operations in the Aleutians, Guadalcanal, and Tarawa were resolved. The complex operation was swiftly and efficiently executed, and America found itself in possession of a vast swath of the Pacific, from which subsequent operations against the Japanese could be launched and won.

Although pre-invasion attacks to attrite Japanese forces in the Marshalls began as early as November 1943, the actual invasion started with D-Day on 31 January, 1944. In the pre-dawn hours, Soldiers of the 7th Infantry Division's Cavalry Reconnaissance Troop and Company B, 11th Infantry paddled ashore in rubber boats to Cecil and Carter Islands, west of Kwajalein.

They quickly seized those islands, and then two more, Carlson and Carlos. This allowed the 7th Division to establish a fire support base on Carlson with 5 artillery battalions, to provide quick, accurate and responsive fire support to cover the landing beaches only two miles away. It also gave the attackers control over the Carlos Inlet, a deep water passage to gain access to the calmer interior waters of the atoll. There, they could more rapidly offload combat troops, supplies, and equipment, to quickly build up combat power during the assault.

The preliminary bombardment started precisely at 0700 hours on D+1, 1 February 1944. Several battleships, cruisers, and a dozen destroyers fired 7,000 rounds of high explosive and armor-piercing shells at bunkers on the invasion beaches on the west side of Kwajalein. Artillery on Carlson joined



NATIONAL ARCHIVES PHOTO

*M4A1 Tanks with snorkeling gear land on Kwajalein's Red Beach and move inland to support the infantry.*

in, firing the first of 29,000 rounds they would fire that day alone. Also, carrier aviation and land-based Army Air Corps bombers dropped several tons of bombs on the defenders. One observer described the bombardment as "devastating-the entire island looked as if it had been picked up 20,000 feet and then dropped-All beach defenses were completely destroyed, including medium and heavy anti-aircraft batteries."

Right on schedule at 0930 hours, the preparatory fires shifted to targets inland and lead elements of two Regimental Combat Teams of the 7th Infantry Division crossed the invasion beach with two regiments abreast. The 3rd Battalion, 184th Regiment used the left two Landing Beaches, Red 1 and Green 4, and the 1st Battalion 32nd Regiment moved across Red Beach 2 and Blue 1 on the right. Since most of the known enemy strongpoints were located on the seaward (right) side of the line of advance, the 1st Battalion, 32nd Regiment's frontage was adjusted to be a couple of hundred yards less than the left side's zone. Despite the intensity of the pre-invasion barrage, Japanese defenders engaged

lead troops with mortars and light machinegun fire. Soldiers landed in Landing Vehicle, Tracked, landing craft, infantry, and amphibious utility craft known as "Ducks," and fought inland.

The impact of the pre-invasion bombardment was starkly evident. Engineers had only one pillbox to destroy on the beach; the others had already been reduced to ruins. Despite rubble from trees and fortifications, and craters from bombs and naval gunfire that impeded movement, the first four waves of the assault force were ashore by 0945.

As Soldiers moved inland, armored amphibian tractors with 37-mm. guns and flamethrowers provided support. Movement was slow and deliberate. M-4 medium tanks equipped with snorkeling gear landed in LCMs with the fifth wave, and maneuvered to support the infantry with direct fire from their 37-mm cannon. Although three tanks foundered in the surf, about eight made it ashore with that fifth wave, greatly adding to the ability of the assault elements to reduce enemy fortifications. Slowly, but steadily the troops fought east across the island, by noon reaching the edge of the run-



way and the dispersal strip alongside it. Behind the assault echelons fresh units moved across the beach and moved into staging areas in case they were needed. Logistical units established ammunition and supply dumps, despite the lack of depth to the lodgment.

Typical of the action that day was that of PVT Parvee Rasberry and PFC Paul Roper, Company K, 184th Regiment. After moving inland about 25 yards from the landing beach, they encountered fire from a hidden pillbox. Taking shelter in a crater, they threw grenades at the enemy without much effect. A flamethrower was employed, but the flames proved ineffective on the concrete. But when PVT Rasberry was able to get a white phosphorus grenade into the position, it forced the enemy to evacuate, subjecting them to rifle fire. Some survivors reoccupied the pillbox, and the whole process repeated until the enemy were completely eliminated. They then called up a tank or amphibious tractor to completely destroy the structure so it couldn't be used again. The two then moved on to the next position and began anew.

These soldiers, like all the others of the 7th Infantry Division, used tactics and techniques for reducing the enemy bunkers that were first learned, practiced, and mastered during their pre-deployment training in Hawaii, before embarking for the Marshall Islands. There, at special Jungle Training Schools, and on specially built range complexes, the Soldiers practiced the techniques of reducing obstacles and positions until they were perfect. That advanced individual and small unit training saved countless lives during the invasion, allowing the Soldiers to quickly and efficiently reduce and eliminate enemy strongpoints and bunkers.

The drive continued over the next three days. But as the island narrowed and turned to the left, it complicated fire support coordination and establishing clear fires as the right units began drifting in from of those on the left. Finally, the Division halted movement for the night of 3 February and issued a new order for the 32nd Regiment to finish off the last 600 yards or so of island clearing remaining. After fending off five night attacks by desperate Japanese, the fresh attack kicked off on the morning of the 4th of February, and by that afternoon the island was declared secure.

Overall, the island had been secured at a minimal cost. U.S. forces suffered 177 killed and 1,000 wounded on Kwajalein, but only 125 Korean laborers and 49 Jap-



 NATIONAL ARCHIVES PHOTO

*Elements of the 7th Infantry Division land on Carlson Island to establish a fire support base.*

anese survived out of 5,000 defenders. Americans estimated that between 50 to 75 percent of the Japanese were killed in the preparatory bombardments. Earlier intelligence reports of substantial defenses proved to be exaggerated. Most of the fortifications clearly had been hastily constructed, but were deadly just the same.

As fighting ended on Kwajalein, the 7th Division quickly consolidated its prize. Support and engineer troops immediately rebuilt the island as an American base. Only days after the cessation of fighting Kwajalein's airfield was functioning, and American planes started attacking the remaining islands still under Japanese control. In the meantime, the 4th Marine Division finished up its own invasion of the twin islands of Roi-Namur in the northern Kwajalein atoll, and both divisions tightened their hold on the Central Pacific.

The conquest of the Marshall Islands demonstrated the soundness of American amphibious doctrine, albeit on a smaller scale than practiced later in the war. As with earlier operations, American planners acquired much experience in the campaign and applied new techniques which would be shaped and refined for subsequent operations. Two of the most important lessons involved close air support and naval gunfire. Before 1944 continuous support from those services was more the exception than the rule. With the destruction of Japanese naval and air forces as the war progressed, and given American industry's tremendous output in ships and planes, the possibility of greatly increasing air

and naval pre-invasion fire support became both feasible and desirable.

The relatively easy seizure of the Marshalls and the effective neutralizing raids on the Japanese fortress of Truk proved the soundness of Nimitz's decision to use the Central Pacific as the best route to Japan. By neutralizing and bypassing Truk, Nimitz saved many lives with no loss of tactical advantage. The Marshalls provided the same facilities as Truk for both fleet anchorages and airfields for future operations. In addition, the 3+ divisions designated for a possible landing on Truk were able instead to prepare for the seizure of the Marianas, where strategic plans called for islands to become long-range bomber bases for the aerial strike on the Japanese home islands.

The quick seizure of the Marshall Islands allowed Admiral Nimitz to advance the date for the invasion of the Marianas by almost six months. At the same time, Japanese preparation time for the defense of islands like Saipan and Tinian was shortened, and many of the U.S. units that had participated in the Marshalls operation, still relatively intact, were made available. The overall importance of the rapid seizure of the Eastern Mandates thus cannot be overestimated. The Marshalls were not only a proving ground for new tactics and innovations but also a critical step in a chain of events that led to the Japanese surrender at Tokyo Bay. Another example of the innovation and adaptability of U.S. Army Forces in the Pacific, and the impact of their contributions to the American war effort.





## THE OUTRIGGER CLUB

1



2

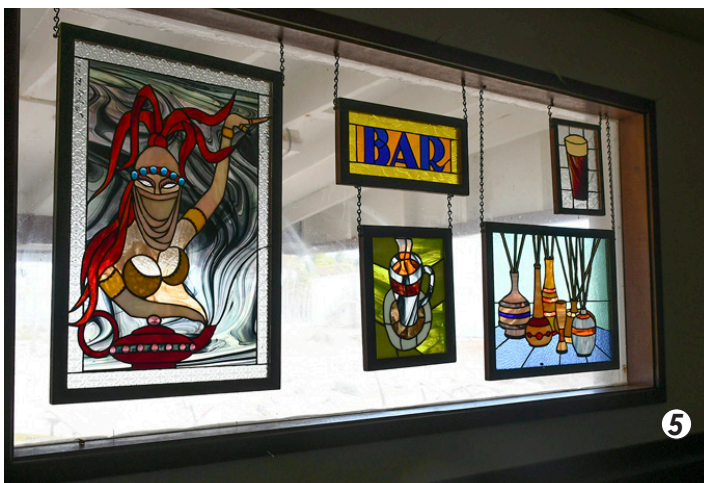


3

U.S. ARMY PHOTOS BY JESSICA DAMBRUCH

1) The Roi-Namur Outrigger Bar and Grill in fall 2022. 2-3) The Outrigger is surrounded by coral rubble and storm debris, following the Jan. 20 inundation.





U.S. ARMY PHOTOS BY JESSICA DAMBRUCH

Operation Roi Recovery continues one day at a time. 1) A Jan. 22 interior view of the Outrigger bar and dance area. 2-3) Silt and debris cover the floor of the Outrigger Bar, but one man with a broom can get a lot done. Pictured here, Jan Potter actions the plan. 4) Potter recovered and arranged the Outrigger's furniture on the porch to air-dry after the inundation. 5) The bar's decorative stained-glass windows appeared undamaged by the inundation. 6) Visitors to Roi during the 80th anniversary commemoration of Operation Flintlock check out the clean-swept and much-improved Outrigger facility on Feb. 3.



# DOES CORAL JEWELRY MAKE A GOOD GIFT?

// EXTERNAL REPORT

By the National Oceanic and Atmospheric Administration

**Corals are already a gift. Don't give them as presents.**

**Corals have** long been popular as souvenirs, for home decor, and in jewelry, but many consumers are unaware that these beautiful structures are made by living creatures. Fewer still realize that corals are dying off at alarming rates around the world.

Coral reefs are some of the most biologically rich and economically valuable ecosystems on Earth, but they are threatened by an increasing array of impacts—primarily from global climate change, unsustainable fishing, and pollution.

Strong consumer demand for coral, heightened over the holiday season, is another factor that is contributing to the decline of coral reefs. Each year, the U.S. imports tons of dead coral for home decorations and curios. Most of these corals are shallow-water species.

The U.S. is also the world's largest

documented consumer of *Corallium*, red and pink corals often used to create jewelry. Finished pieces of jewelry and art crafted from this type of coral can fetch anywhere between \$20 and \$20,000 in the marketplace. Continued consumer demand is contributing to the decline of these delicate corals around the world.

Commercial harvesting to satisfy the demand for coral jewelry has reduced colony size, density, and age structure of *Corallium* over time. Harvesting is also lowering the reproduction capability of this species and is decreasing its genetic diversity.

Research indicates that removal of red and pink corals for the global jewelry and art trade is also leading to smaller and smaller *Corallium* in the wild.

Corals grow very slowly, are extremely long-lived, and take years to reach maturity. It takes corals decades or longer to create reef structures.

Once coral is harvested—especially when it's extracted at a young age—surrounding coral beds often do not recover. That's why it's best to leave corals and other marine life on the reef. Remember: corals are already a gift. Don't give them as presents.

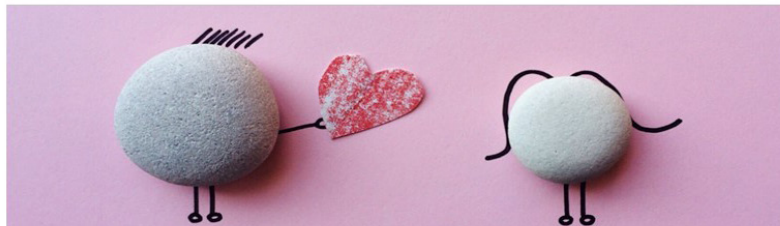
The National Oceanic and Atmospheric Administration provides information and resources for science and ocean aficionados around the world. To learn more about the world's oceans and what you can do to improve ocean health, visit [oceanservice.noaa.gov](https://oceanservice.noaa.gov).



## MONTHLY TIP FROM THE USAG-KA FIRE PREVENTION OFFICE: ELECTRICAL SAFETY

- Have all electrical work done by a qualified electrician.
- Major appliances should be plugged directly into a wall outlet receptacle.
- Use ground-fault circuit interrupters to reduce the risk of shock.
- Test GFCIs monthly or according to the manufacturer's recommendation.
- Ensure electrical cords do not run across doorways or under carpets.
- Use lightbulbs with correct wattage as indicated on your light fixtures.
- If you have frequent problems with blowing fuses or tripping circuit breakers, report it to: [PublicWorksServiceDesk@Vectrus.com](mailto:PublicWorksServiceDesk@Vectrus.com) or call 5-3550.

## Sweetheart Relay 2024



**Join in on another fun Kwaj tradition!**  
**Create a team for a unique twist on the 4x1 mile relay.**

**Monday, Feb. 12, check in by 8:45 a.m. outside the Library.**

**Pre-registration is necessary by Saturday, Feb. 10.**

**Contact Bob and Jane Sholar with questions @ 480-0704.**



# CLASSIFIEDS

**The community wants to hear from you. Email announcements and advertisements to [kwajaleinhourglass@gov2x.com](mailto:kwajaleinhourglass@gov2x.com). Wednesdays by close of business. Ads received after deadline will be published in the next issue of The Kwajalein Hourglass.**

## ANNOUNCEMENTS

**CAC OFFICE.** Before your visit to the Common Access Card Office, ensure all paperwork is completed by your human resources representative before making an appointment. Bring two forms of government-issued IDs with you. Walk-in appointments are welcome, but there may be a wait. CAC Office Hours, Bldg. 835, are Tuesday – Saturday, 8 a.m. – 4 p.m.; (Lunch: noon – 1 p.m.). Call 480-8496.

## DRIVER'S LICENSING CLASSES

Kwajalein Driver's Licensing classes meet Wednesdays, 9 a.m. – Classes for RMI Workforce; 1 p.m. – Classes for expat Workforce. Classes are in Bldg. 856 Rm. 101 Vehicle Maintenance Compound. Space is limited. Registration is encouraged. For more information, call 480-3376. To register, email [brian.arnett@vectrus.com](mailto:brian.arnett@vectrus.com) and [kaisha.wilson@vectrus.com](mailto:kaisha.wilson@vectrus.com).

Roi Driver's Licensing classes meet second Wednesdays in C-building. No registration needed. Class times are as follows: 9 a.m. – Classes for RMI Workforce; 1 p.m. – Classes for expat Workforce.

## EVENTS

Call 480-4198, visit the MWR Desk in the Grace Sherwood Library, Bldg. 805, and visit the Kwajalein Community Events Facebook page.

## Monthly Oceanview Club Nights

From 8 p.m. – midnight  
1st Saturday: Karaoke Night  
2nd Saturday: Salsa Night  
3rd Saturday: Country Night  
4th Saturday: R&B Night

KHS College, Career & Military Fair. Kwajalein School System seeks presenters for the College, Career and Military Fair on March 14 from 2:15 – 3 p.m. in the Multi-Purpose Room. Please contact KHS at 480-2011 to host a table to share information with students in grades 7 – 12

# Help is here

With the events of the weekend on Roi-Namur the topic of discussion, if anyone needs to talk or if they need help, the Employment Assistance Program lead is Kenneth Thomas.

Contact him at [kenneth.thomas@internationalsosgs.us](mailto:kenneth.thomas@internationalsosgs.us) or call 480-5362.

Your discussion with him is strictly confidential.

No need to check-in at the Kwaj Clinic.



about your post-secondary education, career path and military service. For information, contact Dr. Matt Gerber, [gerberma@kwajaleinschools.org](mailto:gerberma@kwajaleinschools.org), 480-2011.

**MWR STARLIGHT CONCERT SERIES** featuring Pure Aloha. Sunday, Feb. 11 at 7 p.m. Follow the read solar lights leading to the event space the Emon Beach Park. Cash bar available. Guests must be aged 21+ to attend.

**QUIZZO.** Monday, Feb. 12 at 8 p.m. at the Oceanview Club. Test your knowledge in this team trivia contest. Arrive early to register your team. Team sizes should not exceed available seating at each table. Those interested in hosting a Quizzo night should visit the MWR Desk at the Grace Sherwood Library or call 480-3133.

## E-WARENESS

Coconut Crabs. Trimming and Removal of Vegetation. The coconut crab, known locally as barulep, is a type of land-based hermit crab. However, unlike other hermit crabs, the coconut crab does not make use of a shell beyond the juvenile stages of its life.

It is this characteristic which allows the coconut crab to grow so large in size. USAG-KA's Environmental Standards identify the coconut crab as a protected species. For this reason, USAG-KA residents and personnel should not disturb, touch, harass, injure or kill coconut crabs. If you have any questions or concerns,

please contact the Environmental Office at 480-0722.

Barulep et eo juon etan ej coconut crab, ej bar juon baru in ioon ene im ejej uaan kin jokjok eo an. Ijoke, ejjab einwot baru kein jet, Barulep ejjab aikuji libuke eo nan libobo kake ilo ak rittolok. Ej unin an barulep maron in rittolok im kilep nan jonan ko rellap. Ekkar ko an USAG-KA's Environmental rej kalikar bwe barulep ej juon men in mour eo nan jab komakit im iroje. Kin un in, ro rej jokwe im mour iloan USAG-KA rejjab aikuj komakit (jibwe), iroje, kakkure, ak mane barulep ko. Elane ewor am kajitok im inebata ko nae, jouj im kebaak ak kirkok Environmental Office eo ilo 480-0722.

## FACILITIES & HOURS

**SALON WALK-INS.** Surfside Salon Walk-In Appointments are available on Fridays from 1:30 – 6 p.m.

**MILLICAN FAMILY POOL.** Closed for cleaning on Thursdays. Open noon to 5 p.m. Tuesdays, Wednesdays, Fridays and Saturdays. Open 11 a.m. to 5 p.m. on Sundays and Mondays.

**KWAJALEIN SMALL BOAT MARINA** hours of operation. 7:30 a.m. – 6 p.m. Friday through Monday, and on holidays, excluding Thanksgiving and Christmas. Morning boat reservation times are from 7:30 a.m. – noon. Afternoon boat reservations are from 1 – 5 p.m.

**ARMA.** Log in to ArMa, the Army Maintenance Application, to report issues for all buildings maintained by the Depart-



## CAUTION ROAD DETOUR CAUTION

LAGOON ROAD DETOUR TO ALL TRAFFIC  
FROM **FEB 8 – 11 2024**  
PARSONS CONSTRUCTION OPERATIONS



Contact the USAG-KA Sexual  
Harassment/ Assault Response  
and Prevention Victim Advocate

Chief Warrant Officer 2 Nate Elkins  
SHARP Victim Advocate  
Work: 480-0660 or 480-3421  
USAG-KA SHARP Pager:  
808-580-3241  
DOD SAFE Helpline: 877-995-5247



## Valentine's Dinner

Sunday, Feb. 18  
Vets Hall

Doors open at 6:30 p.m.  
dinner service begins at 7 p.m.

Four-course steak dinner  
Tickets sales open on Jan. 27

Live Music by Band of the Year

All proceeds benefit the Yokwe Yuk Welcome  
Club's Education Assistance Fund

ment of Public Works. Contact Public Works at 480-3550.

For more information, please call 480-3364 or email Chief Gregory Collins at [gregory.collins@gov2x.com](mailto:gregory.collins@gov2x.com).

### FLIGHTS

\*\*Please note that all flights are subject to change.\*\* For the latest update on your flights on United, ATI or Air Marshall Islands:

ATI: 480-2169; AMI: 480-3469;  
United: 480-4852 or 1-800-UNITED1;  
Air Terminal Services: 480-2660;  
Flight Information Recording: 480-3589

UA Schedule Effective Now  
Monday and Friday—UA 155 (HNL)  
Check-in 2 – 4:50 p.m.  
Wednesday—UA 133 (HNL)  
Check-in 2 – 4:15 p.m.  
Tuesday and Saturday—UA 154 (GUM)  
Check-in 10:45 – 11:15 a.m.

FLYROI RESERVATIONS. To schedule reservations and for correspondence related to flights, email [LCVKwajalein-FlyRoi@wsp.com](mailto:LCVKwajalein-FlyRoi@wsp.com).

### HEALTH

KWAJALEIN HOSPITAL WALK-IN CLINICS.  
Available to the community now, 7:30 p.m. – 4:30 p.m. Flu shots are also avail-

able on a walk-in or appointment basis, Tuesday through Saturday, from 1 - 4 p.m. The updated 2023-2024 formulation for the COVID-19 vaccine (monovalent vaccine based on the Omicron XBB.1.5 sub-lineage of SARS-CoV-2) is available for all ages (6mo+). On hand stock is limited and pre-registration is required to ensure availability of age specific dosage. To register call 480-2223 for additional questions.

NOT FEELING WELL? Call 480-2223 to make an appointment for a COVID-19 test, Tuesday through Saturday from 7:30 a.m. – 4:30 p.m. If you are not feeling well, please wear a mask when you are around others in the community.

VET SERVICES. Pet owners must notify Kwaj Vet Services before vacation. A pet sitter authorization form for treatment is required prior to departing Kwaj. Reach Vet Services at 480-2017 Tuesday through Saturday from 7:30 a.m. – 4:30 p.m.

EAP SERVICES. The EAP provides mental health services on Kwajalein, Roi Namur and Meck which include but are not limited to the following:

- Psychological assessments



- Counseling
- Anxiety and depressive disorders
- Family distress
- Post-traumatic stress disorder assessment and counseling
- Job-and-work-related counseling
- Cross-cultural adjustment issues in counseling
- Crisis management consultation
- Conflict mediation/resolution
- Addiction counseling
- Consultation on violence in the workplace
- Crisis management for employees assigned to USAG-KA

EAP services are also available to the management structure to improve employee retention, performance improvement plans, workplace resilience, and the development of people management skills to build and maintain effective teams. Employee Assistance Program counselor (EAP) Kenneth Thomas MHS, LPC, LCADC, can be reached at kenneth.thomas@internationalsosgs.us or 480 - 5362.

**PET HEALTH.** According to the Association for Pet Obesity Prevention, 59.9 percent of cats and 55.8 percent of dogs in the United States were classified as overweight or obese. Animals that are obese are at an increased risk of experiencing diseases of the heart, lung, liver and/or gastrointestinal system.

They may also suffer arthritis, diabetes, decreased immune function and overall decreased quality of life. If an animal is too obese, they may not be fit for travel off island. A proper diet and exercise during cool times of the day are recommended. For more information, please contact Kwajalein Veterinary Services at 480-2017 and email KwajaleinVeterinary-Clinic@internationalsosgs.us.

**CHAPEL COUNSELING AVAILABLE.** For those who seek religious guidance, general counseling, and who may have questions related to family counseling, all are welcome to schedule an appointment with Ch. Mike Klein at the Island Memorial Chapel by calling 480-3505.

#### **JOBS**

To apply for government employment opportunities on U.S. Army Garrison-Kwajalein Atoll and worldwide, visit [usajobs.gov](http://usajobs.gov).

ARKEL International is hiring. Send CVs and resume to christopher.fuents@arkel.



## **OPSEC REMINDER**

**During this time of transition on Roi, be cognizant of what you post on social media:**

### **• GOOD OPSEC PRACTICES INCLUDE:**

- **Not posting any pictures/videos of Roi unless cleared by the PAO**
- **Not posting any comments about the status of Roi facilities**

**If contacted, point all inquiries to the Public Affairs Office:**

**Mike Brantley, 480-4848/1565,  
[james.m.brantley4.civ@army.mil](mailto:james.m.brantley4.civ@army.mil)**

com and [jasper.gomez@arkel.com](mailto:jasper.gomez@arkel.com). Visit Arkel online at <http://arkel.com>. Call 480-1006 for more information.

**ADMINISTRATIVE ASSISTANT.** CYS seeks a fulltime administrative assistant for on-island hire. Applicants should have a high school diploma/GED and two years' demonstrated experience in administration or secretarial work, an undergraduate degree in business or a related field, or professional certificates from trade schools in a related field. Experience in child or youth programs is highly desirable. All required background checks must be successfully completed and maintained. A health assessment is also required. Please visit: [careers.vectrus.com](http://careers.vectrus.com), REQ: 37777.

**ENVIRONMENTAL HEALTH AND SAFETY MANAGER.** KFS LLC is accepting resumes for a Health and Safety Manager to support an upcoming Environmental Project on Kwajalein. Visit <https://honuserVICES.jobs.net/en-US/job/health-and-safety-manager/J3N1RL6KDG9RWPTYQDF> for additional information, including the full job description, qualifications, and resume submission instructions.

**KIKAHA SOLUTIONS** 30th Signal Battalion Network Enterprise Center, U.S. Army Garrison-Kwajalein Atoll is now partnered with Kikaha Solutions. Please visit [www.kikahasolutions.com](http://www.kikahasolutions.com) for more information and to submit applications. To navigate the site, click on "Careers," scroll down,



and click on "search opportunities and apply." Enter job code 11326 and select search.

NAN, INC. seeks a project engineer, welder, welding inspector, quality control manager, and site safety and health officer. To apply, visit [www.nanhawaii.com](http://www.nanhawaii.com) and contact Clint Ueatari at 480-2632, 480-4995 or 480-4996.

OPSEC REMINDER. During this time of transition on Roi, be cognizant of what you post on social media. Good OPSEC practices include not posting any pictures/videos of Roi unless cleared by the Public Affairs Officer and not posting any comments about the status of Roi facilities. If contacted, point all inquiries to the USAG-KA Public Affairs Office: Mike Brantley, 480-4848/1565, [james.m.brantley4.civ@army.mil](mailto:james.m.brantley4.civ@army.mil).

PARSONS is now accepting applications for an office clerk, heavy equipment operator, quality control technicians, concrete finisher, general labor and masonry. Please visit the Parsons office to apply or apply online <http://parsons.com/careers>.

QUANTUM DYNAMICS, INC., is accepting resumes for positions on Kwajalein and Roi-Namur in the following areas: vehicle maintenance, transportation motor pool, movement control and custodial. Apply at <https://qdyncorp.com/home/careers/>. You may also visit the HR Office in Bldg. 700. Contact the Human Resources manager at 480-0782 or administrative assistant at 480-4916 for more information.

RGNEXT, LLC seeks qualified candidates to fill open positions on Kwaj and Roi in engineering, technical, COMSEC and other areas. To apply, visit [rgnext.com](http://rgnext.com).

SUBSTITUTE TEACHERS WANTED. Kwajalein School System is now hiring substitute teachers. Qualifications: 4-year degree; confidentiality; love of working with children; favorable status for CNACI (will receive background check after accepting offer). Send resumes to [uhrenp@kwajaleinschools.org](mailto:uhrenp@kwajaleinschools.org). For more information call 480-3601.

TRUESTONE is hiring for multiple positions. Contact Tribalco Human Resources at 480-4344 and visit <https://www.akima.com/careers/>. Visit [www.tribalco.com/careers.html](http://www.tribalco.com/careers.html).

TORCH TECHNOLOGIES seeks an MDA Support Analyst (Req#5588). The candi-

EXPIRED / UNUSED  
MEDICATION TAKE BACK  
RECEPTICLES LOCATED AT:

1. HOSPITAL PHARMACY  
BUSINESS HRS TO DROPOFF  
WITH PHARMACIST OR 24/7  
RECEPTICLE LOACTED IN  
FRONT OF PHARMACY

OR

2. 24/7 RECEPTICLE  
LOCATED AT BLDG. 803  
KWAJ POLICE / SECURITY  
DISPATCH

## Look Familiar?

Might be time to clean out  
the medicine cabinet



## FIBER ARTS WITH YOUR COMMUNITY HOBBY SHOP

Gather your knitting needles,  
crochet hooks, embroidery  
supplies and meet up with other  
fiber art enthusiasts.

Dates

Jan. 31, Feb. 28,  
March 6, and April 3

Not an instructional class.  
Kids 14 & under must be  
accompanied by adult.

Meet at the library any time  
from 4 - 7 p.m.

Contact the Hobby Shop for more information.  
Hobby Shop: Bldg. 815, Phone: 480-1700

Hours: Weds. & Thurs., 1 - 8 p.m.;  
Fri., Noon - 8 p.m.; Sat. - Mon., Noon - 6 p.m.;  
Tues. - Closed



## Hobby Shop Workshop Handmade Citrus Juicer

Squeeze some time out of your  
schedule and join us at the shop to  
make a custom citrus juicer.

Children under 14 must be  
accompanied by an adult.

Date: Feb. 22

Time: 6-8 p.m.

Members: \$10

Non-members: \$15

8 available spots

Hobby Shop: Bldg. 815, Phone: 480-1700

Hours: Wednesday & Thursday, 1 - 8 p.m., Friday,  
noon - 8 p.m., Saturday - Monday: 12-6 p.m.,





date will support the Missile Defense Agency on Kwajalein. This position is an on-island accompanied position with housing. Applicants must possess an active clearance. Please apply directly at <https://torchtechnologies.hua.hrsmart.com/hr/ats/Posting/view/5588>

For questions, email [dalia.kardaman@torchtechnologies.com](mailto:dalia.kardaman@torchtechnologies.com).

**V2X JOBS.** V2X has several opportunities for on-island hires: Harbor Controller I (35649), Logistics Analyst (32717), Inventory Associate (35067), and Bartender (32355). Apply online at [www.careers.vectrus.com](http://www.careers.vectrus.com) or stop by the HR office in building 700.

#### NEWCOMERS

**ISLAND ORIENTATION** and Newcomer's Briefings occur in the REB, behind the Island Memorial Chapel. To register, email [KWAJ\\_OSO\\_Ops@Vectrus.com](mailto:KWAJ_OSO_Ops@Vectrus.com) or call 480-3511.

**OPSEC.** See something, say something. All employees on USAG-KA are required to receive annual Threat Awareness and Reporting Program training provided by KRO; Reporting: Report suspicious activities to the Kwajalein Resident Office at 480-9859/1293/8006 at Bldg. 1163.

**PASSPORT OFFICE.** The United States Army Garrison-Kwajalein Atoll Passport Office will process U.S. passports on Wednesday, Feb. 21, from 1 - 5 p.m. at the USAG-KA command headquarters, command conference Room, Bldg. 730. Please email: [# VARIETY SHOW

## Everyone is invited to watch!](mailto:us-</a></p></div><div data-bbox=)

**Sunday, March 17**  
**6 P.M. - MP Room**

**Social Hour:**  
**Popcorn**  
**5 - 5:55 P.M.**

All proceeds from donations will go to Yokwe Yuk Welcome Club's education support in the Marshall Islands and Micronesia.



[army.buchholz.id-pacific.mbx.usag-ka-passports@army.mil](mailto:army.buchholz.id-pacific.mbx.usag-ka-passports@army.mil) or call 480-2103.

**POST OFFICE CLOSURES FOR 2024:** Feb. 19 - G. Washington Birthday; May 27 - Memorial Day.

**PCS & VACATION TIPS.** Customers must notify the post office before leaving for 30 days or PCS'ing. Per DOD 4525.6-M, mail is only allowed to be held for 30 days with or without prior notice. Mail is considered unclaimed on day 31 and will be returned to the sender. Email the post office to authorize pick up for your mail and packages. When PCS'ing, provide a forwarding address. Contact James Smith with questions at 480-3461 and [james.e.smith2295@army.mil](mailto:james.e.smith2295@army.mil).

**REGULATIONS**  
**TOBACCO USE.** USAG-KA

Policy Memorandum 600-8 protects others from the negative impact of tobacco use. On USAG-KA, smoking is permitted in designated smoking areas only. Smoking and cigarette butt receptacles must be at least 50 feet from the entrance of facilities.

**VEGETATION.** Per USAG-KA Regulation 420-1, vegetation may not be planted in the ground without approved permits. Residents may be asked to remove items if planted without approval. Do not place sprouted coconuts in yards.

**DON'T TAKE CULTURAL ARTIFACTS.** It is illegal to remove cultural resources from the atoll. This includes any protected species, unexploded ordnance, WWII-era artifacts and ancient Marshallese artifacts. These resources are protected under U.S. federal

and RMI law. Do not remove these pieces of atoll history from Kwajalein. Contact the Kwajalein Archaeology Office at 480-8867.

**EMERGENCY MANAGEMENT.** If an emergency or disaster occurred, would you and your family be notified? 1) Visit the USAG-KA Emergency Management webpage, <https://home.army.mil/kwajalein/index.php/my-fort/EM>; 2) Click on "Mass Notification"; 3) Follow the registration instructions.

**CANDLES** and open flames are not permitted in BQ rooms. The Kwajalein Fire Department thanks you for keeping your neighbors safe.

**RADIO**  
**HAM SHACK** Amateur Radio Operators. All amateur operators will now be required to file for a Marshall Islands



**NEVER FORGET.**  
<https://kwajaleinmiaproject.us/>



callsign. Please contact Lisa at V73ML1@gmail.com for an application and information.

FM99 THE WAVE & 97.9 ROI RAT RADIO. Tune in 7 - 9 a.m., 11 a.m. - 1 p.m. and 4 - 6 p.m. Tuesday through Saturday for live broadcasting, music, and community updates.

RF EQUIPMENT. Bringing new Radio Frequency equipment or wireless devices on island? Please contact the NETCOM Spectrum Management Office. This may require three months' approval process. Report any interference problemw. Home use of commercial electronics does not require approval. Call 480-4135.

#### TAXI SERVICE

Call 480-TAXI (8294) or 3341 to book your ride at least 24 hours in advance of your check-in time.

#### WARDROBE FOR VISITING EBEYE

When visiting Ebeye in the Marshall Islands, it is advisable to dress modestly and respectfully, considering the local cultural norms and the warm tropical climate. Here are some general guidelines for both men and women prepared by Yolanie Korab.

#### CLOTHING FOR MEN

Opt for lightweight, breath-



**American Red Cross**

## Learn to Swim



able fabrics such as cotton or linen to stay comfortable in the warm and humid weather. Wear collared shirts or T-shirts that cover the shoulders. Avoid sleeveless shirts or tank tops, as they may be seen as inappropriate. Choose knee-length shorts or trousers. Avoid wearing excessively short shorts or swimwear in public.

#### CLOTHING FOR WOMEN

DRESSES OR SKIRTS: Women should wear knee-length or longer dresses, skirts, or sarongs, and not pants. Loose-fitting and lightweight fabrics are recommended. Select modest tops that cover the shoulders and avoid low necklines or revealing clothing. Hats or

caps are useful for protecting yourself from the sun, especially during the hot daytime hours. Apply sunscreen, wear sunglasses, and carry a light shawl or umbrella for extra sun protection.

FOOTWEAR FOR MEN AND WOMEN: Comfortable shoes or sandals are suitable. Sandals are easy to slip on and off when visiting homes or certain establishments.

Registration: Jan. 30 – Feb. 9

To register stop by Central Registration!

If you have questions: annie.hepler@Vectrus.com/480-2158



**Dates:** Feb. 13 – 27

**Days:** Tues, Wed, Fri, & Sat

**Location:** Millican Family Pool

#### **Times:**

Levels 3-6 – 3:45-4:15 p.m.

Levels 1-2 – 4:30-5 p.m.

Parent & Toddler – 5:10-5:30 p.m.



**Kwaj Eyecare**

**Eye Exams, Dry Eyes, Eye Disease  
Glasses for all ages  
Contact Lenses (including multifocal)  
Safety Frames and Lenses**

Call 480-2224 to be added to the waitlist Feb. 6 -17, 2024

[www.kwajeyes.com](http://www.kwajeyes.com)

[drwtblack@aol.com](mailto:drwtblack@aol.com)

## Kwajalein Schools College, Career, & Military Fair

Kwajalein Schools is seeking **presenters** for the **College, Career, and Military Fair** on March 14 from 2:15 - 3 p.m. in the Multi-Purpose Room.

Please contact KHS at 480-2011 to host a table and share information with 7-12 grade students about your post secondary education, career path, or military service.



POC: Dr. Matt Gerber  
[gerberma@kwajaleinschools.org](mailto:gerberma@kwajaleinschools.org)  
480-2011



## Keep Kwaj clean!

- Litter detracts from the appearance of Kwaj – it harms the environment, attracting insects and rodents
- Much of the litter ends up in the water and harms marine life
- Bottles, cans, cigarette butts, paper and plastic are the most common
- We live, work and play here so please be responsible!
- Join together and pick up litter on Kwaj!







## A FRIENDLY E-WARENESS REMINDER FOR WHAT NOT TO MAIL TO KWAJ

### APO AP 96555 Mail Restrictions

**One of the many restrictions** for mail to ZIP Code 96555 is a prohibition on fruits, vegetables, live animals and live plants.

Please do not order these items to be delivered to APO AP 96555. Live plants are prohibited in the mail.

For a complete list of restrictions to all post office destinations, see the most recent Postal Bulletin pull-out section at the post office.

For a list of restrictions specific to 96555, go to: <https://postcalc.usps.com/MilitaryRestrictions> and enter zip code 96555. For more information on mailing restrictions to Kwajalein, keep reading.

**Other than** for the Priority Mail Express Military Service and the exceptions listed below, a customs declaration PS Form 2976 or PS Form 2976-A is required for all items weighing 16 ounces or more, and for all items (regardless of weight) containing potentially dutiable mail contents (e.g., merchandise or goods) addressed to or from the 96555 zip code.

Other than the exceptions listed below, all PMEMS mailpieces—regardless of mail contents or weight—addressed to or from this ZIP Code must bear a properly completed PS Form 2976-B. The surface area of the address side of the mailpiece must be large enough to contain the applicable customs declaration. The following exceptions apply to known mailers, who for this purpose are defined as follows:

- Business mailers who enter volume mailings through business mail entry units or other bulk mail acceptance locations, pay postage through advance deposit accounts, use permit imprints for postage payment, and submit completed postage statements at the time of entry that certify that the mailpieces contain no dangerous materials prohibited by postal regulations. Such business mailers are exempt from providing customs documentation on non-dutiable letters and printed matter.
- All federal, state, and local government agencies whose mailings are regarded as "Official Mail." Such agencies are exempt from providing customs documentation, except for any items addressed to a post office to which this restriction applies.
- Firearms of any type are prohibited, except firearms mailed to or by official U.S. government agencies. This restriction does not apply to firearms mailed from this zip code, provided ATF and USPS regulations are met. Antique firearms do not require an ATF form.
- Replica weapons and inert explosive devices such as grenades and weapons parts are prohibited.
- Fruits, vegetables, live animals, and live plants are prohibited.
- All alcoholic beverages, including those mailable under Publication 52, Part 421 are prohibited.
- Synthetic cannabinoids used to stimulate the central nervous system commonly known as "synthetic marijuana," "K2," or "Spice" are prohibited.
- Priority Mail Express Military Service is not available.

*Graphic based on a photo by Raj Palgun*





# WEATHER AND TIDES

// RTS WEATHER STATION

## WEATHER DISCUSSION

Dry and breezy trade wind conditions are expected to continue for Kwajalein Atoll for the next several days.

A robust subtropical ridge remains in control as the predominant force for our weather pattern, keeping winds northeasterly and fresh for majority of the forecast period.

Showers will remain only stray in coverage for the most part, and any showers that are able to form will be small, shallow, and brief. Showers throughout the forecast period will have a near-zero thunderstorm risk but will allow for some gusty winds in the upper 20s to lower 30s due to elevated winds at the mid-levels of the atmosphere.

Trade winds will likely sustain in the upper teens, and even low twenties at times. Strong trade winds will remain well in place through the first half of Tuesday and will pose periodic Small Craft Advisory concerns throughout the period, where Monday looks to be the peak time frame for elevated trade winds and as a result, ap-

SUN-MOON-TIDES				
	SUNRISE SUNSET	MOONRISE MOONSET	HIGH TIDE	LOW TIDE
SUNDAY	7:09 a.m. 6:58 p.m.	8:05 a.m. 8:16 p.m.	5:19 a.m. 4.1' 5:31 p.m. 5.3'	11:13 a.m. -0.9' 11:52 p.m. -1.1'
MONDAY	7:09 a.m. 6:58 p.m.	8:54 a.m. 9:12 p.m.	5:55 a.m. 4.3' 6:06 p.m. 5.1'	11:51 a.m. -0.8' -----
TUESDAY	7:08 a.m. 6:58 p.m.	9:40 a.m. 10:07 p.m.	6:30 a.m. 4.3' 6:41 p.m. 4.7'	12:25 a.m. -0.9' 12:30 p.m. -0.6'
WEDNESDAY	7:08 a.m. 6:58 p.m.	10:25 a.m. 11:01 p.m.	7:06 a.m. 4.1' 7:15 p.m. 4.1'	12:57 a.m. -0.6' 1:09 p.m. -0.2'
THURSDAY	7:08 a.m. 6:59 p.m.	11:10 a.m. 11:56 p.m.	7:43 a.m. 3.9' 7:49 p.m. 3.4'	1:28 a.m. -0.2' 1:51 p.m. 0.3'
FRIDAY	7:08 a.m. 6:59 p.m.	11:58 a.m. -----	8:25 a.m. 3.5' 8:25 p.m. 2.7'	1:58 a.m. 0.3' 2:41 p.m. 0.9'
FEBRUARY 17	7:07 a.m. 6:59 p.m.	12:48 p.m. 12:51 a.m.	9:22 a.m. 3.1' 9:19 p.m. 2.0'	2:30 a.m. 0.8' 4:06 p.m. 1.4'

pears to be the most likely day a SCA will be needed.

Seas are elevated in response to stronger trade winds and are expected to be augmented by High King tides exceeding 5 feet as well, making way for possible tidal inundation along shorelines, particularly for north- and east-facing shores.

As a result, a High Surf

Advisory has been issued for Kwajalein and Roi-Namur, lasting until 10 p.m. local time on Monday with a surf as high as 8-11 feet.

## SATURDAY

Partly sunny and breezy with stray possible showers. Winds NNE-ENE at 15-20 knots with clear-air gusts in the low 20s and

even higher gusts possible near any showers.

## SUNDAY

Partly sunny and breezy with stray possible showers. Winds NE-ENE at 15-20 knots with clear-air gusts in the low 20s and even higher gusts possible near any showers.

## MONDAY

Partly sunny and windy with stray showers.

Winds NE-ENE at 18-23 knots with clear air gusts in the mid 20s and even higher gusts possible near any showers.

## NEXT WEEK

Late Tuesday morning to early afternoon of next week will likely be the end of the elevated trade winds as the subtropical ridge is expected to weaken at this time.

This will bring us more dry/windy season conditions to the atoll with showers struggling to get above stray coverage, but winds should remain mostly between the middle and upper teens, proving us with overall pleasant conditions for most of the work week ahead.

## MOVIE SHOWTIMES

Shows start at 7:30 p.m.

### RICHARDSON THEATER

Saturday, Feb. 10  
"Lightyear"  
(Pg) 100 Min.

Sunday, Feb. 11  
"Lyle, Lyle Crocodile"  
(Pg) 106 Min.

Saturday, Feb. 17  
"Madagascar"  
(Pg) 86 Min.

Sunday, Feb. 18  
"Minions:  
The Rise Of Gru"  
(Pg) 87 Min.

Saturday Feb. 24  
"Paw Patrol:  
The Mighty Movie"  
(G) 86 Min.

Sunday Feb. 25  
"Ralph Breaks  
The Internet"  
(Pg) 112 Min.

### YUK THEATER

Saturday, Feb. 10  
"The Menu"  
(R) 107 Min.

Sunday, Feb. 11  
"Love Again"  
(Pg-13) 104 Min.

Saturday, Feb. 17  
"The Nun II"  
(R) 110 Min.

Sunday, Feb. 18  
"Aquaman"  
(Pg-13) 143 Min.

Saturday, Feb. 24  
"Malignant"  
(R) 111 Min.

Sunday, Feb. 25  
"Barbie"  
(Pg-13) 114 Min.

# Kajitok? Abnōnō?

Questions?

Concerns?

Call the Commander's Hotline at 480-1098.

## NAN, INC. CONSTRUCTION NOTICE

Nan, Inc. Construction is scheduled to commence the telecommunication scope of work for the FY21 Kwajalein Army Family Housing project in our community from February – September 2024. There may be potential traffic disruptions, particularly from Lagoon Road to Bldg. 806. We kindly ask residents and commuters to be aware of possible changes in traffic patterns and to plan their routes accordingly.

We appreciate your patience and understanding. Nan, Inc. Construction is committed to minimizing any inconveniences, and we will strive to ensure a smooth and efficient construction process.

