

VOLUME 64 NUMBER 2

JANUARY 14, 2023

# THE KWAJALEIN HOURGLASS



LEATHERNECKS OF THE 24TH REGIMENT, 4TH MARINE DIVISION, ASSAULT JAPANESE POSITIONS ON NAMUR 31 JAN – 3 FEB 79 YEARS AGO DURING THE AMERICAN INVASION OF THE MARSHALLS.

 COURTESY OF ROYSTON COLOUR

## THIS WEEK

### PALAWAN MARU

IS LOST AND FOUND TREASURE 2

### ROI GOLF TORPEDO

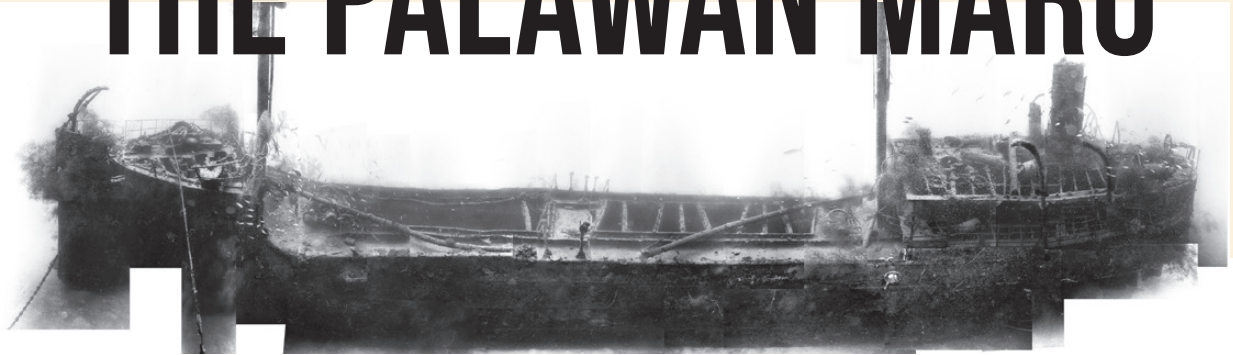
AN HISTORIC FIND 5

### SPACE FENCE HISTORY

PREPARING THE FUTURE 6



# THE PALAWAN MARU



BY BILL REMICK

**Most** of the larger shipwrecks on Kwajalein were discovered by recreational divers in the mid-1960s. When I was there from 1966-68, there were persistent rumors of a ship sunk in Bigej Pass. Since the pass is not very deep, that didn't seem too likely, but people talked about it a lot anyway.

In the late 1980s, I had a chance to work with Dan Bailey on the update and revision of his book "WWII Wrecks of the Kwajalein and Truk Lagoons." His research turned up records of a ship sunk near the north end of Bigej by shellfire from the destroyer USS Harrison DD-573. Perhaps this was the Bigej Pass wreck the rumors told of. Dan's book had only been out for a few months when I was able to make my first trip back to Kwaj in the summer of 1989. It was my first experience with a "sonar."

In hindsight, I am not sure just what this [sonar] was, but it ran on a paper roll for the output and was a real handful for the poor guy trying to operate it. We towed around for as much time as we had and even pulled some guys behind the boat to no avail. Mark Miller and I made another stab at trying to locate the wreck in 1991 with a fishfinder.

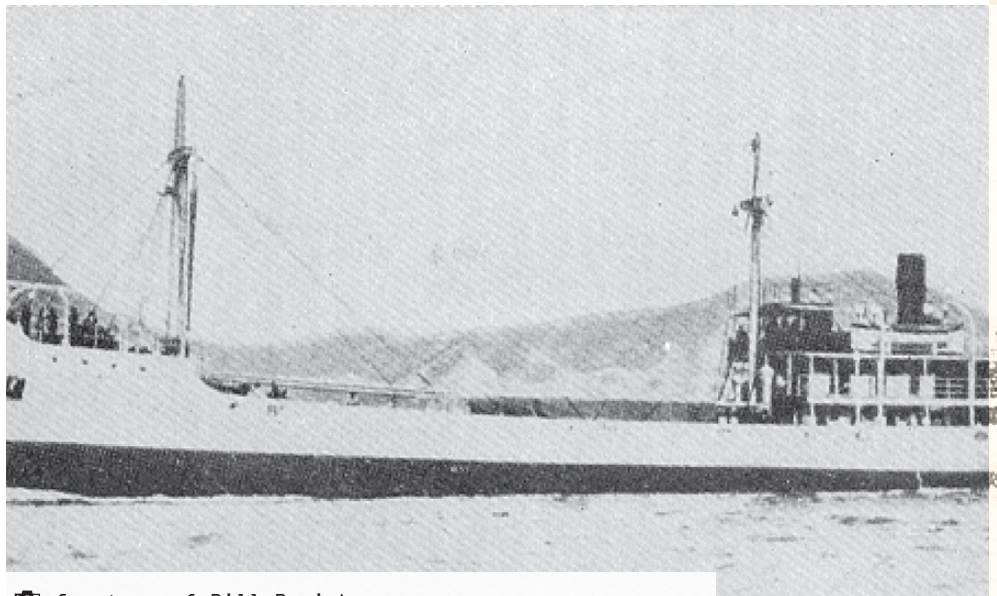
Again, we came up empty handed. In the meantime, lots of other wreck divers were searching for it as well. It was finally discovered in 1992 by local divers Gordon Jones and Richard Jung.

Between the two trips I had contacted the USS Harrison reunion group and became friends with the organizer, John Chiquoine, the son of one of the WWII

crew. He reported that surviving crew members recalled it was a tanker, and they left it in sinking condition. It was assumed to be a tanker because of the aft-engine configuration that was typical of tankers. The crew also thought the tanker had been able to make it to the beach after they departed. The Palawan was built in Hong Kong in 1927. It carried a Philippine registration for a company in Manila, which meant that it was a US-flagged vessel. I have always thought the Palawan was designed for river trade in China where the shallow

draft and extra maneuverability offered by the twin diesels would be a big advantage. The Palawan was caught in the Japanese air raids in Manila harbor in 1942 and sunk there. The Japanese raised and repaired the ship and put it back in service, naming it the Palawan Maru. It was subsequently sunk at Kwajalein on January 31, 1944.

Today the Palawan rests upright in very clear waters and is one of the more picturesque shipwrecks at Kwajalein. The after mast was pulled down as a result of a very large sailboat mooring to it.



📷 Courtesy of Bill Remick

*TOP: A composite photo of the Palawan Maru. The photos were taken in 1995 by Bill Remick. ABOVE: The Palawan Maru, from the U.S. Navy ONI 208 J Supplement Far Eastern Small Craft.*

## IN JANUARY



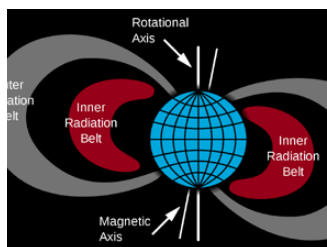
### MARTIN LUTHER KING JR.

In January, we remember and honor the life and achievements of civil rights activist Dr. Martin Luther King Jr.



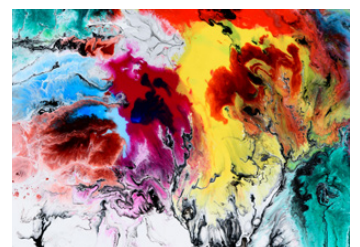
### NATIONAL PIE DAY

Not to be confused with pi, We have Boulder, Colorado, to thank for this quirky pastry celebration, occurring each year on January 23.



### EUREKA!

On Jan. 31, 1958, the United States confirmed the existence of the Van Allen belt—a band of charged particles suspended in Earth's magnetosphere.



### CREATIVITY MONTH

Be creative! Use the month of January as an opportunity to get into art, drawing, photography or another creative activity.

## THE KWAJALEIN HOURGLASS

The Kwajalein Hourglass is named for the insignia of the U.S. Army's 7th Infantry Division, which liberated the island from the forces of Imperial Japan on Feb. 4, 1944. The Kwajalein Hourglass is an authorized publication for military personnel, federal employees, contractor workers and their families assigned to U.S. Army Garrison-Kwajalein Atoll.

Contents of the Hourglass are not necessarily official views of, or endorsed by, the U.S. Government, Department of Defense, Department of the Army or US-AG-KA. It is published Saturdays in accordance with Army Regulation 360-1. Phone: Defense Switching Network: 315-480-5169 Local phone: 480-5169

Garrison Commander.....Col. Thomas Pugsley  
Garrison CSM.....Command Sgt. Maj. Ernest Miller  
Public Affairs Officer.....Mike Brantley  
Editor.....Jessica "JD" Dambruch



# DEAR KATHERINE

## JOHN D. SCHNEIDAU WRITES FROM KWAJALEIN

This week, The Kwajalein Hourglass continues the letters of Lt. Cmdr. John D. Scheidau, who wrote home to his wife, Katherine, as his tank landing ship, USS Addison County, LST-31, performed mission support operations during its January 1944 voyage to Kwajalein Atoll.

**Here it is:** The next day or two.

The battle for the main island in this section is still going on, but the [Japanese] are now pushed into a corner and it shouldn't be long before they are wiped out. They fight right on to the end, though, no matter how hopeless the situation is. They figure if they can kill two or three of our troops before they kickoff, they have saved their face, or some such rot as that.

All night long, star shells have been bursting over the battlefield. They shed an eerie light over the scene. Several of our small ship boats have been into that section of the beach that we have well in hand with supplies.

Mr. Gurley, who went in one of the troops, says that the troops ashore dread the night, as the [Japanese] hide in their

holes and underground chambers all day, or lie among the dead, and as soon as it gets dark, they sneak through the lines in the hope of getting a few of our men before they are seen. It's a ticklish business as it is difficult to tell friend from foe in the darkness.

Yesterday morning, troops landed on another island next to the main one. This one was the second-best defended in the group here. We took part in that, also. This morning, troops will land on three more islands farther up the chain.

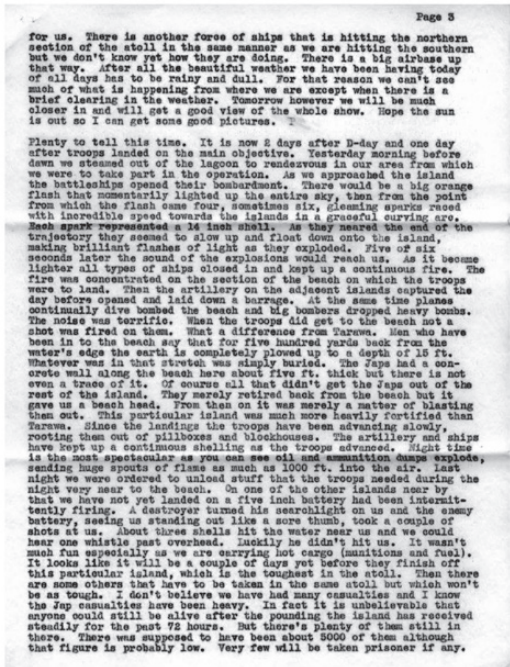
Shortly after the landing, we moved in to only a little less than a mile from the beach, so that we had a ringside seat for the whole battle.

The island is very narrow, and about a mile and a half long, so that with the glasses, we could watch our tanks and infantry as it advanced across its length.

The tanks were out in front and would crawl along slowly. Every now and then, a puff of smoke would land near one as a [Japanese Soldier] threw a hand grenade. They would all stop and open up on the [Japanese] position until it was cleaned out or if it was too tough, the artillery from the other island would work on it or maybe a destroyer would steam right up to the beach and pound it. Then, the tanks would move on.

One tank was way out in front of all the others—too far out front. About 10 [Japanese] ran out of the blockhouse and surrounded it, throwing hand grenades at it.

The tank would have been done for, escape that another tank a good way behind could see what was going on through a break in the trees and wiped out the [Japanese] with light machine gun fire.



A "sea of gray": An excerpt from Schneidau's letters.

The detritus of war: Pictured here, debris and portions of a Japanese light tank are visible in a pile of rubble.

NO MATTER WHAT FIELD  
YOU ARE IN,  
OPSEC APPLIES TO YOU.



# DIVE SAFETY TIPS!

Always dive with a buddy. Never dive alone.

Wait at least 12 hours before flying after doing a single dive.

Wait 18 - 24 hours after doing multiple dives.

Divers Alert Network (DAN) recommends refraining from strenuous work at least 24 hours before AND after diving.

Keep your gear up-to-date and serviced regularly. DAN recommends that regulators get overhauled at least once a year.

Each diver should have their own computer.

On any given dive, both divers in the buddy pair should follow the most conservative computer.

Do not ascend greater than 60 feet per minute.

Even if not required, always make a safety stop at 15 feet for at least three minutes.

Start the dive day with the deepest dive first.

Avoid making multiple deep dives on the same day.



Many Marshallese words for colors have their etymology based in the English language. There are few traditional words for color.

## Helpful Words

Bulu	blue
Kurin	green
Buroro	red
Ialo	yellow
Mouj	white
Kilmeej	black
Piin	pink
Oran	orange
Kure	gray
Koba	copper
Wuno	color

## Common Phrases

Wuno ta kani kwoj jibwe?  
*What color are you holding?*

Mouj im kure, bwe eita?  
*White, why?*

Oh, kinke ij kapok oran.  
*Oh, because I am looking for an orange.*

Ejjelok ak ewor bulu.  
*There isn't any, but we have blue.*

Oh mol ke, inaj bok juon im bar juon buroro.  
*Oh really, then I will have one red and a red too.*

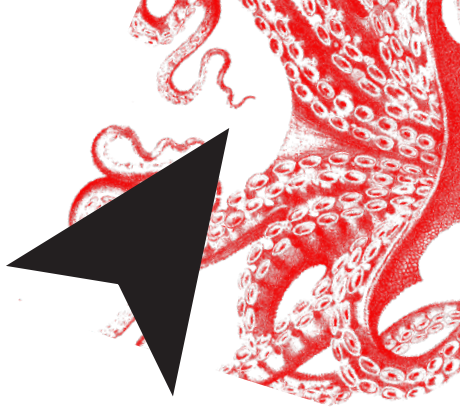
Oh ibar aikuj ialo nan leddik en jatu.  
*Oh, I also need yellow for my younger sister.*

Kwolok lale ij aikuj ke bar ebok an bar piin?  
*Do you think I should get her pink?*

Inna im lewaj am loba.  
*Yes, and get yourself copper.*

Kora eo jino enaj konan kurin.  
*My mom will want green.*

Ak, jema enaj konan kilmeej.  
*However, my dad will want black.*



# KWAJ COMMUNICATION

For a small island, Kwajalein has a lot going on. Any given weekend, friends and community organizations host events and opportunities to meet others and try new hobbies.

Many private organizations and meet-ups make exclusive use of Facebook to contact their general membership. To reach an even wider audience—including those not on Facebook—check out some of the official channels below.

## USAG-KA FACEBOOK PAGE

U.S. Army Garrison-Kwajalein Atoll posts community-wide updates to its official Facebook page.

Check daily for information about flight restrictions, travel delays, safety and updates to garrison residents and employees at <https://www.facebook.com/USArmyKwajaleinAtoll/>.

## THE KWAJALEIN HOURGLASS

The Kwajalein Hourglass contains news, USAG-KA Command updates, event information, articles about island life, activities and safety messaging.

The Kwajalein Hourglass is available online each week via a link on the USAG-KA Facebook page and the U.S. Army Space and Missile Defense Command homepage. A print version of the KHG is also posted each week at the Kwajalein post office—and chances are good that's where you are reading this.

## THE AFN ROLLER CHANNEL

Get the word out to the community via the AFN roller channel. Help wanted ads, private organization event advertisements and health and safety messaging are just a few of the types of messages you may see roll by during the week. Email messaging to [kwajaleinhourglass@vectrus.com](mailto:kwajaleinhourglass@vectrus.com) and [james.m.brantley4.civ@army.mil](mailto:james.m.brantley4.civ@army.mil).

## ISLAND BULLETIN BOARDS

Going to the gyms, libraries or schools? Check the bulletin boards for posted messages about upcoming activities. Some of these boards are specially allocated for use by MWR.

Contact MWR at 480-3331 for information about how to advertise your messages using the boards.







*In this 2001 Kwajalein Hourglass photo by Thomas Eisele, Joshua Rich, Explosive Ordnance Disposal technician, helps oversee the unearthing of two 2,000-pound Japanese torpedoes found at the Roi-Namur golf course.*

## TORPEDOES FOUND ON ROI GOLF COURSE

### KWAJALEIN HOURGLASS ARCHIVE

**It's easy to overlook unexploded ordnance when you don't know what to look for.**

The Kwajalein Hourglass reported a unique find on Roi-Namur 21 years ago: a familiar and long-neglected protrusion on the golf course that turned out to be something far more deadly. Feature writer KW Hillis covered the story of how Kwajalein Explosive Ordnance Disposal stepped in to handle the threat.

By KW Hillis  
Feature Writer  
Dec. 11, 2001

Over the years, a lot of people have walked behind the ladies' tee box on Roi-Namur golf course hole number two. They probably would have tread more carefully if they had known that 2,000-pound torpedoes rested under their feet.

Saturday, Dec. 1, golfer Bog Smooth took a second look at a familiar, eight-inch circular disk protruding an inch above the ground and called the police, said Thomas Eisele, senior explosive ordnance device technician.

"Lawnmowers running over it have flaked the metal away until [explosives] were exposed," Eisele said. "Apparently, a lot of people had seen it but didn't know what it was. [Smith was] an EOD laborer

on Kaho'olawe with me ... he knew what he was looking at and gave us a call."

Kaho'olawe is a Hawaiian island that was used as a bombing range and is now being cleaned of munitions, Eisele added.

"I saw what looked like clay, and that's what got my attention," Smith said. "We don't have clay out here. ...I knew it was something explosive."

The police immediately roped off the area, but IFT-7 took priority until EOD personnel could come to Roi-Namur Wednesday. After closing both the road and golf course as added precautions, the team started digging, said Joshua Rich, EOD technician and team leader.

"With such a little bit showing we thought it may be a 100-pound bomb," Eisele said. "It turned out to be two Japanese torpedoes ... one doesn't have much of a warhead, the other has over 500 pounds of high explosive. That was the one that was showing."

Although there is always a chance of explosion, the torpedoes were not fused, Eisele said, explaining that just the "explosives, body of the torpedo and propulsion system" were there.

The torpedoes are now being held in the ordnance holding area, but special precautions are being taken, said Rudy Gil, USAKA Safety acting chief.

"To my recollection, we have never

found anything as big as what we found on Roi this week," Gil said. "We have to put some restrictions around the area where they are stored."

Areas include the Japanese cemetery and holes 12 and 13 at the golf course.

After a Saturday morning meeting with USAKA and Raytheon Safety, Environmental, Launch Ordnance and EOD, Gil said the restriction would remain in place until further notice.

"We are looking at a couple of different options, and we still want to get more information from Navy EOD on ways to dispose of these torpedoes," Gil said.

**You are sure to have noticed a few key differences in how Hillis described the island community from 2001. Two decades ago, the prime contract for base operations support and range activities was operated by Raytheon. The garrison was known as "USAKA"—a name still reflected in range safety literature today—before an official name change later.**

Other aspects of atoll life remain the same. Perhaps least surprising of all of is that UXO continues to be found in and around Kwajalein Atoll; we live and work on a WWII battlefield. Do your part by familiarizing yourself with the three r's of UXO found later in this issue of The Kwajalein Hourglass.



*This 2,000-pound torpedo was discovered at the Roi-Namur golf course Dec. 1, 2001. (Photo by Thomas Eisele)*



# UNPRECEDENTED SPACE SITUATIONAL AWARENESS WITH KWAJALEIN SPACE FENCE RADAR

EXTERNAL REPORT

*This article was first published in the January 11, 2020 Kwajalein Hourglass.*

The Space and Missile Systems Center’s Space Fence program office, on behalf of SMC’s program executive officer for Space, formally accepted Space Fence on December 13 during a signing ceremony held at U.S. Army Garrison-Kwajalein Atoll headquarters.

Elaine Doyle, Space Fence program manager, approved the Material Inspection and Receiving Report, also known as the Department of Defense Form 250, to accept the system on behalf of the U.S. government. U.S. Army Col. Jeremy Bartel, USAG-KA commander; Kevin Kelly, Space Fence chief engineer; Bob Con-dren, Lockheed Martin program man-ager; and Michael Proudfoot, Lockheed Martin Kwajalein site manager, were also in attendance.

The Space Fence system is an advanced ground-based radar designed to detect, track, and identify satellites and orbital debris.

Space Fence, designated AN/FSY-3, is a net-centric system of advanced ground-based S-band surveillance radars that detect, track and identify satellites and orbital debris.

From the radar sensor site on Kwajalein, Space Fence will utilize its flexibility, coverage and sensitivity to monitor significantly more objects that reside in the current day space catalog. The system can detect closely-spaced objects, breakups, maneuvers, launches and conjunction assessments from low Earth orbit through geosynchronous Earth orbit.

During the signing ceremony, Doyle praised her Air Force Life Cycle Management Center program team and prime contractor, Lockheed Martin, and the Kwajalein organization. Doyle recognized the successful partnership with US-AG-KA during the construction of the massive radar and the establishment of the new Space Fence Power Plant Annex that will power the large radar on a 24/7/365 basis.

“The radar design was all about minimizing power consumption and life cycle costs,” said Doyle, as she also noted the program team worked diligently to develop a very cost-effective capability for the American taxpayer.

Space Fence implemented an advanced element-level digital beam forming architecture with Gallium Nitride-based hardware and software-defined program-mability that can be adapted over time



U.S. AIR FORCE PHOTO 1



U.S. ARMY PHOTO BY MIKE BRANTLEY



U.S. ARMY PHOTO BY JORDAN VINSON 3

1) An aerial shot of Space Fence on U.S. Army Garrison-Kwajalein Atoll. 2) Elaine Doyle, Space Fence program manager, is joined by (from left to right) Bob Condren, Lockheed Martin program manager, Michael Proudfoot, Lockheed Martin Kwajalein site manager, Col. Jeremy Bartel, U.S. Army Garrison-Kwajalein Atoll commander, and Kevin Kelly, Space Fence chief engineer, during the Space Fence Material Inspection and Receiving Report, also known as the Department of Defense Form 250 signing ceremony at USAG-KA headquarters. 3) Lockheed Martin and the company’s team on Kwajalein break ground on the Air Force’s Space Fence sensor, designed to locate and track space debris cluttering orbit around Earth, in February 2015.

to address emerging needs of the space community. The new Space Fence PPA was also integrated with the adjacent Kwajalein Power Plant and other existing fuel and sea-water cooling infrastructure on Kwajalein.

“The radar approach and the integration of the facilities on island reflect an extremely smart investment by the government,” said Doyle. Longer-term, the Space Fence PPA will be operated with the existing KPP as a single integrated

breaking in 2015. The industry team worked closely with USAG-KA, the U.S. Army Corps of Engineers, U.S. Army Network Enterprise Technology Command, other U.S. and RMI contractor personnel and a very welcoming island community.

“As visitors walk around the sensor site, they can’t help but be impressed by the massive scale of the radar and all of the hard work and collaboration that was required by both government and industry to make it a reality,” Condren noted.

Space Fence has already begun to prove its unmatched, innovative capabilities. During Lockheed Martin’s testing of the system in March, it detected the breakup field from an anti-satellite test conducted by India. Space Fence observed a significant amount of debris tracks surrounding the time of the event and the system proved its ability to automatically predict and correlate their next crossing time.

The system has finished the government’s developmental test phase with the U.S. Space Force’s 45th Test Squadron as well as the operational test phase conducted by the U.S. Air Force’s Operational Test and Evaluation Center. A trial period with the operational community is currently underway and Space Fence is on track for operational acceptance by U.S. Space Force in early 2020.

After the trial period, USAG-KA will operate the PPA while the existing Lockheed Martin team on the island will continue to operate and maintain the sensor site, providing two years of interim contractor support.



power source for Kwajalein.

“Really, this DD-250 event is a celebration about teamwork,” said Condren, as he reflected on the enormous scope of the effort to build the large facility in the remote Marshall Islands since the ground-





# THE NORTHERN ATOLL, PART 1

Marines crouch low in their landing craft as they approach a battlefield on Kwajalein Atoll in 1944.

We continue our exploration of the phases of Operation Flintlock with the story of the battle to free Roi.

The text that follows is an excerpt from “The Fourth Marine Division” by Robert Sherrod, which details the battle for Roi-Namur. It first ran in *The Kwajalein Hourglass* in February 1994.

There is no doubt in my mind. When the final returns are in, historians will decide that the Central Pacific was the main stroke against Japan (during WWII). This was the campaign where the 4th Marine Division fought all its battles—at Roi and Namur, Saipan, Tinian and Iwo Jima.

The 4th Marine Division was in combat a little over 60 days in WWII. But in those

60-odd days, the division saw more action than many divisions see in 600 days—action as fierce as any troops ever saw.

The price the division had to pay was heavy—as it must be on small, vital targets. It amounted to 75 percent of the original divisional strength. It takes men to stand such losses and come up as determined as ever. The 4th had men.

## Setting Records

The 4th Marine Division set three new records on its first operation. It became the first division to go directly into combat from the United States. It was the first to capture Japanese-mandated territory in the Pacific, and it secured its objective in a shorter time than that of any other important operation since the attack on Pearl Harbor.

For weeks, the coming battle had been known only by its codename: “Operation Flintlock.” Not until the big convoy had passed the Hawaiian island was its destination revealed to all hands—the twin islands of Roi and Namur in the Kwajalein Atoll of the Marshall Islands. Simultaneously, the U.S. Army’s 7th Infantry was to invade Kwajalein.

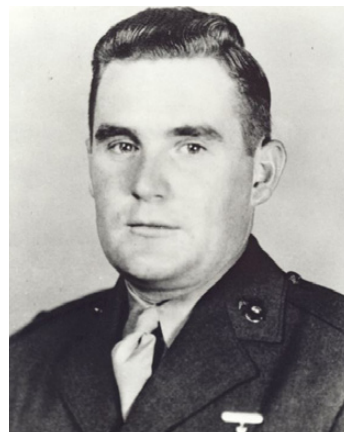
During the 18-day voyage to the atoll, the Marines had plenty of time to study their objective. With Tarawa fresh in their minds, the prospect of hitting a small, heavily defended beach was not too cheerful.

Operation maps showed numerous installations—coast defense guns, heavy and medium antiaircraft guns, machine guns, block houses, a total of 52 pillboxes, numerous antitank trenches, rifle trenches and barbed wire. Added to this, the two islands of Roi-Namur were hardly more than overgrown sand spits. Roi measured 1,200 by 1,250 yards at its widest points. Namur was 800 by 900 yards. Neither island was a square mile in size. An estimated 3,000 enemy troops were there to defend them. It was not a pleasant prospect.

Against this, however, was a preponderance of striking power. The task force that accompanied the Marine and Army divisions to the Marshalls was the largest in the Pacific at that time. The assemblage of carriers, battleships, cruisers and destroyers that preceded and convoyed the transports was a reassuring sight to the Marines who

lined the rails. U.S. infantry, furthermore, would outnumber the defenders two to one.

The 4th Division was part of the Northern Landing Force, under the command of Maj. Gen. Harry Schmidt. Ground operations as a whole, including Kwajalein Island, were under the 5th Amphibious Corps. Maj. Gen. Holland M. Smith. The Joint Expeditionary Forces were commanded by U.S. Navy Rear Adm. Richmond K. Turner. The Northern Attack Force, of which the 4th Division was the landing force, was under the command of Rear Adm. Richard L. Conolly, USN.



1ST LT. JOHN VINCENT POWER

Medal of Honor recipient 1st Lt. John Vincent Power was born in Worcester, Massachusetts and graduated from Classical High School in 1937.

While attending the College of the Holy Cross in 1941, he played several sports, including golf, football, tennis and basketball. Power graduated in 1941 and enlisted in the Marine Corps on July 7, 1942.

The Gearing-class destroyer USS Power, DD-839, is named for him. The vessel participated in the first Project Mercury launches and transited the Panama Canal in 1968.



Marine Corps Col. Franklin A. Hart, left, commander of the 24th Marine Regiment, briefs his staff on Roi-Namur invasion plans during a Jan. 28, 1944 meeting on a ship off the coast of Roi. In attendance is Lt. Col. Aquilla James “Jimmie” Dyess, far right, who in less than a week would fall in battle.



# VET TECH MYTH-BUSTERS

## The Hairy Truth about Kwajalein Ticks and Fleas

COMMUNITY CONNECTION

By Danielle Rinaldi  
Former Veterinary Technician  
Kwajalein Hospital

As the veterinary professional on Kwajalein, I've heard the many interesting and sometimes peculiar myths and rumors that have been passed down throughout the years since pets were allowed on island.

By far, the most remarkable myth is that the island is completely void of fleas and ticks. This has been mentioned in my office a few times, mostly after a flea infestation has been discovered. Fleas and ticks do exist on Kwajalein.

If you see these pests on your beloved companion, don't panic. These ectoparasite infestations are treatable and, more importantly, preventable.

**What To Do If You Spot a Flea**  
Kwajalein Veterinary Services is here to help. The clinic currently sells products able to treat and prevent these bothersome infestations. Routinely grooming your pet will help you discover fleas and/or ticks sooner.

You can also always schedule a time to bring your pet to veterinary services for a thorough physical examination. While it is more likely that you will see a flea infestation on your island pet, it is important to be aware that ticks have been known to use island pets as hosts from time to time as well.

Aside from being a nuisance, both fleas and ticks have a number of secondary health risks that require attention as well including bacterial infection, anemia, tapeworm infection and even occasional degeneration of organ functions.

**Act Quickly**  
Fleas and ticks have been known to transmit diseases to the animals they feed on. It can take as little as 24 hours for a tick-borne disease to transmit to the affected dog or cat. While rickettsial diseases, or tick-related diseases, are not as concerning on Kwajalein as compared to certain regions of the world, keeping your pet protected from ticks guarantees disease transmission is kept at bay.

Additionally, the population of fleas

you see on your pet during an infestation only accounts for approximately five percent of the total population in the immediate environment. The rest of the fleas and larvae are in your home and yard. Treating a home for a flea burden is a multi-step process and involves washing bedding and upholsteries, thorough vacuuming, and surface cleaning. A combination of products to kill the fleas affecting your home may prove to be most helpful. Be sure to follow instructions on product labels carefully and remove pets from the home when recommended as some products can be harmful.

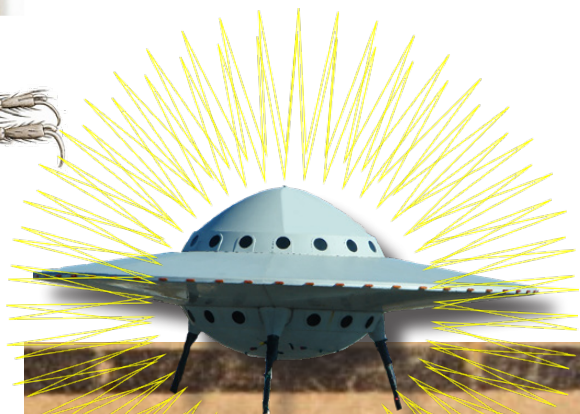
**Choosing The Right Preventative**  
There is no single preventative on the market that protects your pet from every possible internal infection or external infestation, but there are tons of options to choose from. A grouping of products is usually recommended to keep your pet fully covered. Picking the right combination to best fit your pet's lifestyle is very important (e.g. collars, oral products, topical products, etc.). To learn more, reach out to veterinary services with help creating a customized, preventative plan that works best for your family.

Use caution when purchasing products from Amazon. Kwajalein Veterinary Services recommends only purchasing products from veterinarian-approved sources, such as 1-800-PetMeds or the clinic. Sometimes products sold via third parties online can be misleading and may not contain the ingredients listed; in other words, there are frauds out there.

To ensure your pet's safety and that you have purchased the intended product, stick to reputable sources. If you ever have any questions about a product, please contact veterinary services or bring the product by the office.

**Maintain Regular Treatments**  
Stay diligent with using monthly preventatives. Preventing ectoparasite infestations is always easier than treating them. For example, it takes approximately three months to break the flea life cycle, so the initial treatments after discovering a flea infestation are very important. However, fleas and ticks don't just go away. In fact, both parasites can live in virtually any environment. Keeping pets on a preventative year-round for the rest of their lives is recommended to keep the animals, your home and even you protected.

**The Truth Is Out There**  
For more information, contact Kwajalein Veterinary Services at 480-2017 or send an email to KwajaleinVeterinaryClinic@ms.internationalsos.com.



## I WANT TO BELIEVE

### Common Kwaj Flea Myths Busted

**Myth:** My pet cannot have fleas because they live entirely indoors.

**Fact:** Fleas thrive particularly well in the well-regulated temperatures in the home.

**Myth:** My pet cannot have fleas because if there were any fleas they would be biting (insert name of a person in the family reportedly sensitive to flea bites). Since this person is not being bitten, there must not be any fleas.

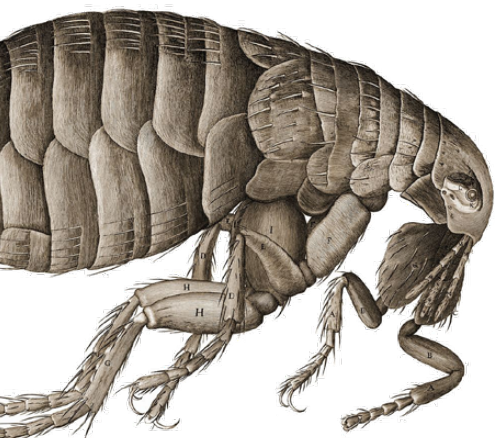
**Fact:** The cat flea, *Ctenocephalides felis*, can suck the blood of a wide variety of animals. However, this flea definitely does not prefer human blood and won't eat it unless absolutely necessary. Humans tend not to get bites unless flea population numbers are high.

**Myth:** We do not have fleas because we only have hard wood floors.

**Fact:** Fleas love to develop in the cracks between the boards of hard wood floors.

**Myth:** My pet cannot have fleas because I would see them.

**Fact:** You cannot expect to see fleas because many animals will lick, groom, and chew after being bitten by a flea. This causes the flea to either jump off the pet or get swallowed.





# HOW WILL THEY APPROACH YOU OR GAIN ACCESS?

- Official Foreign Visitors** | Collectors may pose as members of a foreign government organization, or an intelligence or security service. Vetted Official Foreign Visitors and their entourage may include last minute, unvetted substitutions.
- Conference/Expo/Tradeshaw** | Public venues align new technologies and Subject Matter Experts. The adversary can collect personal information through registration and/or sign-in.
- Academic Solicitation** | "Innocent" requests for information may come from students, professors, scientists, or researchers; a foreign affiliation may not be readily apparent.
- Unsolicited Contact/Email** | The adversary may use the name of a well known company to send requests for military-related information. This method is fast and often undetected.
- Joint Research Ventures** | Alerts an adversary to current scientific initiatives and the military's latest activities, allowing for tailored contact attempts.
- Front Companies** | The adversary may shield their true identity by using a shell company or subsidiary typically financed by a foreign bank and with connections to a foreign business or embassy.

# WHO IS AT RISK?

Cleared defense contractors and scientific researchers—because of who you are, what you research, and your knowledge of manufacturing processes, prototypes, and developed products.

# WHO ARE THEY?

- Traditional Collectors** | Foreign Governments and Foreign Businesses whose intent is to illegally acquire information or trade secrets.
- Non-Traditional** | Can be anyone: scientists, researchers and developers, students, or sometimes our trusted colleagues who work along side us.

# WHAT MAKES YOU A VALUABLE TARGET?

You have access to valuable insider and proprietary information. In the hands of the adversary, it can shorten their R&D efforts, counter our tech advantage, and cost us untold billions of dollars.

## WHAT IS YOUR OBLIGATION TO REPORT?

Personnel subject to the UCMJ who fail to comply with the reporting requirements of Army Regulation 381-12 Threat Awareness and Reporting Program (TARP) are subject to punishment under the UCMJ, as well as to adverse administrative or other adverse action authorized by applicable provisions of the USC or Federal regulations.

Personnel not subject to the UCMJ who fail to comply with the reporting requirements of Army Regulation 381-12 are subject to adverse administrative action or criminal prosecution as authorized by applicable provisions of the USC or Federal regulations.

### CONTACT INFORMATION

KWAJALEIN RESIDENT OFFICE  
BUILDING 1163  
KWAJALEIN ISLAND, RMI

(805) 355-9857  
(805) 355-9859

[inscom.army.mil/isalute/](https://inscom.army.mil/isalute/)

TARP

## TECHNOLOGY PROTECTION

Threat Awareness &  
Reporting Program





# COMMUNITY CLASSIFIEDS

The community wants to hear from you. Email announcements and advertisements to [kwajaleinhourglass@vecrus.com](mailto:kwajaleinhourglass@vecrus.com) Wednesdays by close of business. Ads received after deadline will be published in the next issue of The Kwajalein Hourglass.

## ARMY REGULATIONS

**TOBACCO USE.** USAG-KA Policy Memorandum 600-8 protects others from the negative impact of tobacco use. On USAG-KA, smoking is permitted in designated smoking areas only. Smoking and cigarette butt receptacles must be at least 50 feet from the entrance of facilities.

**CANDLES** and open flames are not permitted in BQ rooms. The Kwajalein Fire Department thanks you for keeping your neighbors safe.

**METAL DETECTORS** are not allowed on Kwajalein according to Army Regulation. Unexploded Ordnance exists and could be dangerous if disturbed.

Not allowed on USAG-KA: bow and arrow, air guns, paint ball and other projectile weapons.

**VEGETATION.** Per USAG-KA Regulation 420-1, vegetation (e.g. trees, bushes, plants) may not be planted in the ground without an approved permit. Residents may be asked to remove items if planted without approval. In addition, do not place sprouted coconuts in your yard.

## CAC OFFICE

**Bldg. 835**  
To schedule a CAC Office appointment, visit <https://idco.dmdc.osd.mil/idco/> or search 'CAC Appointment' online. Enter 'Kwajalein' as the site location, click 'select' to the right of the map, and schedule your appointment using calendar.

**CAC Office Hours**  
**Tuesday – Friday**  
**8 a.m. – 4 p.m.**  
**(Lunch: noon - 1 p.m.)**  
**Sat. 8 a.m. – 3 p.m.**

Ensure all paperwork is completed by your human resources representative before making an appointment. Bring two forms of government-issued IDs with you to your appointment. Walk-in appointments are welcome, but there may be a wait. Questions? Call 480-8496.

## EAP SERVICES

The Kwajalein Hospital team welcomes Kenneth Thomas, the island's Employee Assistance Program counselor. Ken is a Licensed Professional Counselor and Licensed Clinical Alcohol and Drug Counselor. Clients can expect education about mental health disorders from a multicultural perspective with the goal of moving toward acceptance and ultimately to mitigate symptoms. Contact Ken at [kenneth.thomas@internationalsosgs.us](mailto:kenneth.thomas@internationalsosgs.us) or 480-5362 with questions.

## FACILITIES

**RACQUETBALL COURT CODE.** Residents can obtain the door code from the MWR Desk at the Grace Sherwood Library. The code will not be given out over the phone. Contact MWR at 480-3331 with questions.

## JOBS

To research and apply for government employment opportunities on U.S. Army Garrison-Kwajalein Atoll and worldwide, visit [usajobs.gov](http://usajobs.gov). Write to [kwajaleinhourglass@vecrus.com](mailto:kwajaleinhourglass@vecrus.com) to remove your listing.

AKIMA is hiring for the following on-island positions: Communications Clerk (ID: TRU01101); Communications Specialist (ID: TRU01100); and Fiber / Cable Technician (ID: TRU01099). Applicants must currently reside on USAG-KA and possess a valid passport. For more information and a list of required qualifications, visit [https://akima.taleo.net/careersection/akimallc\\_cs/jobsearch.ftl](https://akima.taleo.net/careersection/akimallc_cs/jobsearch.ftl). Apply online or send resume to Jeannette McIlwain at [jeannette.mcilwain@akima.com](mailto:jeannette.mcilwain@akima.com).

**ADMINISTRATIVE ASSISTANT.** This position provides daily administrative task support for operations at the Island Memorial Chapel. For questions or to submit a resume, please call 480-3505. Send to [kwajchapel@gmail.com](mailto:kwajchapel@gmail.com) and Ch. Brian Conner at [brian\\_conner@sbcglobal.net](mailto:brian_conner@sbcglobal.net).

**CALIBRE** seeks a Military Material Specialist. For more information, or to apply, visit <https://jobs.silkroad.com/calibresys/https://calibresyscareerssilkroadcom/jobs/4013>.

**KAIHONUA** is hiring for multiple positions. For more information or to apply, please contact Tribalco Human Resources at 480-4344 and visit <https://honuservices.jobs.net/page/kaihonua>. Applicants must meet job requirements.

**NAN, INC.** seeks a project engineer, welder, welding inspector, quality control manager, and site safety and health officer. To apply, visit [www.nanhawaii.com](http://www.nanhawaii.com) and contact Clint Ueatari at 480-2632, 480-4995 or 480-4996.



**Sgt. 1st Class Effie Banks**  
**SHARP Victim Advocate**  
Work: 315-480-0660  
or 315-480-1419  
**USAG-KA SHARP Pager:**  
805-355-3241 #0100  
**DOD SAFE Helpline:**  
877-995-5247

**SHARP**  
SEXUAL HARASSMENT/ASSAULT RESPONSE & PREVENTION

**CONTACT THE USAG-KA SEXUAL HARASSMENT/ ASSAULT RESPONSE AND PREVENTION VICTIM ADVOCATE**





**Third Saturday Of Every Month**  
**8 – 12 p.m.**

**Karaoke NIGHT**





**ENJOY PUBLIC WI-FI**  
**Capt. Louis S. Zamperini Cafeteria,**  
**Cafe Roi, Surfway, Roi Surfway,**  
**the Ocean View Club and the**  
**Sunrise Bakery**



QUANTUM DYNAMICS, INC., is accepting resumes for positions on Kwajalein and Roi-Namur in the following areas: vehicle maintenance, transportation motor pool, movement control and custodial; and Apply at <https://qdyncorp.com/home/careers/>. Contact Dolly Bakhsh, HR manager, at 480-0782 and [dbakhsh@rmi.qdyncorp.com](mailto:dbakhsh@rmi.qdyncorp.com), or Sammy Juda, administrative assistant at 480-4916 and [sjuda@rmi.qdyncorp.com](mailto:sjuda@rmi.qdyncorp.com). You may also visit the HR Office in Bldg. 700.

QUANTUM DYNAMICS, INC., has immediate openings for the following on-island positions: Transportation Motor Pool; Production Control Clerk – GCSS-Army I; and on Kwajalein and Roi, Fault Repair and Heavy Equipment Mechanic – Vertical Lift. Contact the Human Resources manager at 480-0782 or administrative assistant at 480-4916 for more information.

RGNEXT, LLC seeks qualified candidates to fill open positions on Kwaj and Roi in engineering, technical, COMSEC and other areas. For information and to apply, visit [rgnext.com](http://rgnext.com).

SUBSTITUTE TEACHERS. Kwajalein School System is hiring part-time substitute teachers. These are on-island hire positions with no guaranteed hours. Minimum requirements: confidentiality, four-year degree and love of working with children in grades K – 12. Teaching certificate preferred. CNACI background check must be completed after receipt of job offer. Apply at [Careers.Vectrus.com](http://Careers.Vectrus.com), search for “substitute teacher,” or, send resume and letter of application to [uhrenp@kwajalein-school.com](mailto:uhrenp@kwajalein-school.com).

TRUESTONE is hiring for multiple positions. Contact Tribalco Human Resources at 480-4344 and visit <https://www.akima.com/careers/>. Visit [www.tribalco.com/careers.html](http://www.tribalco.com/careers.html).

## NOTICES

INTERNET OUTAGE. There will be a temporary internet outage Jan. 18 - 20 and Jan. 24 - 26 from 5 - 11 p.m. The outage will be island-wide, affecting residential internet, commercial internet, banking, school, hospital and credit card readers. Equipment is being upgraded for future bandwidth and reliability improvements. Questions? Contact April Pacileo at 480-2278 during normal working hours.

RMI ENTRY REQUIREMENTS. Updated entry requirements for the RMI by air or seaport include the following requirements: Adults aged 18-years old and up must have completed one primary COVID-19 vaccine series. Primary series: Johnson & Johnson single dose; Pfizer completed series (two doses); or Moderna completed series (two doses) Boosters are not currently mandated. There is no vaccination requirement for children under age 18.

TEMPORARY CLOSURE. The oceanside perimeter road will close to pedestrian, bicycle and vehicle traffic 20 minutes prior to heavy aircraft arrivals and departures. Contact Airfield Operations at 480-2131 with any questions.

ISLAND ORIENTATION and Newcomer's Briefings take place in the Religious Education Building behind the Island Memorial Chapel. Email [KWAJ\\_OSO\\_Ops@Vectrus.com](mailto:KWAJ_OSO_Ops@Vectrus.com) or call 480-3511 to register.

ARMA. Log in to ArMa, the Army Maintenance Application, to report issues for all buildings maintained



**Need to renew your passport?**  
Complete the passport application at [travel.state.gov](http://travel.state.gov).

Print the completed form and ensure you have a copy of your existing passport and other documents, including parents' identification cards, birth certificates, etc.

Photos must be from within the last six months. The applicant should not wear eyeglasses in the photo.

**Schedule of Fees**  
Adult passport renewal: \$130

Adult passport (first time application): \$165  
Minor passport (15 and younger): \$135

Adult Passport Card: \$30

Minor Passport Card: \$15

Only money orders and cashier's checks payable to "U.S. Department of State" are accepted. These can be purchased from Community Bank or at the post office.

**Passport Photos Are Now Available For Free**

Contact Host Nation Activities at 480-2103 for more information.

by the Department of Public Works. For more information, please contact DPW at 480-3550.

## POST OFFICE

POSTAL CARETAKER. You can designate a postal caretaker to retrieve your packages and mail from the post office when you are not able to do so. Island residents may opt to assign a caretaker when planning vacation, while self-isolating after exposure to COVID-19 or a positive COVID-19 test, and while recovering from an injury. Email your caretaker request to [jon.jenkins@vectrus.com](mailto:jon.jenkins@vectrus.com) and [isaac.larios@vectrus.com](mailto:isaac.larios@vectrus.com).

ABSENCES, PCS'ING, AND YOUR MAIL. The post office must be notified when customers leave for 30 days or PCS. Per DOD 4525.6-M, mail is only allowed to be held for 30 days with or without prior notice. On day 31, mail is considered "unclaimed" and will be returned to the sender. Send an email to the post office to authorize someone to pick up your mail and packages. When PCS'ing, provide a forwarding address. Contact James Smith with

questions at 480-3461 and [james.e.smith2295@army.mil](mailto:james.e.smith2295@army.mil).

COMMANDER'S QUARTERLY INNOVATION CHALLENGE. Send great ideas for improvements and innovations to Col. Tom Pugsley. Winners will receive an official innovator's award and a special AAFES gift card. To submit your idea, call the Commander's Hotline at 480-1098 or email USAG-KA Public Affairs Officer Mike Brantley, at [james.m.brantley4.civ@army.mil](mailto:james.m.brantley4.civ@army.mil).

AUTOMOTIVE LICENSING. The Automotive Licensing Office has moved to Bldg. 808. Please visit during regular hours of operation to complete license testing and documentation.

DON'T TAKE CULTURAL ARTIFACTS. Remember, it is illegal to remove cultural resources from the atoll. This includes any protected species, unexploded ordnance, WWII-era artifacts and ancient Marshallese artifacts. These resources are protected under U.S. federal and RMI law. Please do not remove



**OPSEC on the brain?**  
It should be.



**Know what you have to protect.**  
**Know how to protect it.**  
**Remember OPSEC at all times.**

## GLASS BEACH OPENING

### PUBLIC SAFETY ANNOUNCEMENT

Glass Beach will have limited access to the lower part of the beach from now until April 15, 2023, with the following restrictions.

- The top crest of the beach area, to include all vegetation near the orange fence are off limits.
- Access to the beach only at the southwest end of the orange fence line; do not pverstep the fence line.
- No large group/party gatherings are permitted. Visitors should pick up any trash before leaving the area.
- Please report any violators of these safety orders to USAG-KA
- Avoid flight-operation hours and observe all applicable airfield-runway restrictions and safety rules.

Contact Patrick Chauvey at 480-0129 with questions.



Enter your yard for the chance to win! The USAG-KA Yard of the Month program is for all residents of Kwajalein Army Family Housing. Each month, the Kwajalein Housing Office will choose three island quarters for consideration.

One lucky winner will take the prize and bragging rights for a month! Prizes could include a free MWR cart rental, pizza from the Sunrise Bakery, or a game of bowling. For more information, contact USAG-KA Public Affairs at 480-4848.

these pieces of atoll history from Kwajalein. For questions contact the Kwajalein Archaeology Office at 480-8867.

NOTIFY THE VET. Please notify Kwaj Vet Services before going on leave if you have pets. A pet sitter authorization form for treatment is required prior to departing the island. You can reach Veterinary Services at 480-2017 Tuesday through Saturday from 7:30 a.m. - 4:30 p.m.





# UXO REMINDER

## PUBLIC SAFETY ANNOUNCEMENT

Unexploded ordnance should be treated like dangerous sea creatures: Look, but do not touch. You can play an important role in keeping Kwajalein safe by knowing what to do when you spot unexploded ordnance.

### Remember the three R's of UXO:

- **Recognize** an item as possible unexploded ordnance;
- **Retreat** from the area of the UXO; and
- **Report** suspected UXO immediately.

If you discover an object that could be UXO, notify Kwajalein Explosive Ordnance Disposal immediately by calling 480-1433. You can also call CPS at 480-4445. Provide the following information about what you found:

- **Location.** Note helpful details like the building number, GPS coordinates and any prominent landmarks
- **Size of the UXO** as compared to common items like a football or scuba air cylinder

For a detailed refresher on UXO safety, attend the new island orientation or call Kwajalein EOD at 480-1433.

### Kemejmej R ko 3.

- **Recognize (kile)** juon kwopej bajjok emaron Bokutan ak kein kabok-kolok (UXO).
- **Retreat (Jenliklik)** bed ettolok im jab kepaak UXO eo.
- **Report (Ripoot e)** boktun ak kein kabokklok eo ien eo emokajtata non EOD ilo nomba kein (480-1433) ak CPS (480-4445).

Ken melele kein: Ia eo (nomba in ijo, GPS, kakolle in ijo, etc.); Jonan (jonan e ibben jet kain mweik - football, taan in turan, etc.).

Tiljek kon UXO kein einwot am koprok menin mour in lojet ko rekau-wotata. Kalimjek wot jab jibwe. Non bar kakemejmej eok, eokwe jouj im koba lok ilo Island Orientation allon otemjej.



# E-WARENESS ATOLL FORMATION

**Atolls are** formed from sunken volcanoes. Coral continues growing around, creating some of the most beautiful and biologically diverse habitats. Depending on their size and climate, atolls can take up to 30 million years to form.

Ene ko ilon aelon in rekar walok jen Volcano ko ibulen lojet. Wod ko ilojet ilo imetowan aelon in rej eddoklok ilo aer komman men ko reaiboujwoj ilo lojet eo. Juon aelon emaron in eddok jen lojet eo ekkar nan jonan im jokjokin lojet eo an iturinlok 30 million yio.



# OBEY STOP SIGNS.

Thank you, USAG-KA Community, for abiding by the stop signs! With construction on the garrison's projects underway, every-one appreciates you stopping to look out for bikers, drivers and pedestrians in the community.

**\*Always avoid the caution areas surrounding the ends of the runways on both Kwajalein and Roi-Namur when aircraft are approaching or taking off. Pedestrians, cyclists and drivers must always make a full stop at the stop signs posted near the ends of the runways.**

Kwajalein



MIA Project

# NEVER FORGET.

<https://kwajaleinmiaproject.us/>



## What's the weather?

For weather information, please click the logo to visit the RTS Weather Station online.