

THE KWAJALEIN HOURGLASS



THIS WEEK

AIRFIELD ACTION

PAVING THE WAY TO SUCCESS 2

ART OF BRAVERY

WITH KWAJ ART TEACHER 4

NEW MYSTERY

AT KWAJALEIN ARCHAEOLOGY 5

PAVING CREWS WORK ON THE BUCHOLZ
ARMY AIRFIELD RUNWAY REPAIR PROJECT IN
MAY 2022.



JESSICA DAMBRUCH



PAVING THE WAY AT BUCHOLZ ARMY AIRFIELD

A vehicle operator waits while the batch plant at the Bucholz Army Airfield construction site deposits a payload of freshly mixed cement into the bed of the truck in May 2022. Crews are working around the clock to finish the BAAF refurbishment.

BY JESSICA DAMBRUCH

Work continues on the Bucholz Army Airfield refurbishment project, as personnel from Parsons Corporation, Acme Paving and affiliated contract work crews labor through the evening hours.

Island residents are advised to maintain a safe distance and to refrain from utilizing all walking paths around the runway through the month of October.

Earlier this spring, Anthony Campbell, BAAF Runway Repair project manager, looked forward to the finished product as crews tackled a major task: paving the more than 6,000-foot runway.

“The paving is the operation that affects the most people,” Campbell said. “We prioritized that activity to make sure that once we started, we would finish by our respective timelines. We now have asphalt paving crews here to be able to roll into the next phase.”

The initial groundbreaking for the runway occurred in January 2020, with USAG-KA leadership and personnel from the U.S. Army Corps of Engineers, Parsons and affiliated contract support crews.

Over the past months,



U.S. ARMY PHOTOS BY JESSICA DAMBRUCH

A crewmember follows a grade paver to shovel fresh concrete in place in the airfield construction zone.

BAAF construction crews have split their airfield work into two phases to allow airfield logistics operations to continue uninterrupted. Executing the timing of the project’s many phases to accommodate daily operations has presented unique challenges. Campbell said he is proud of the work personnel have accomplished to date on the historic airfield.

Truck drivers, many of

them powered by Marshalllese operators, move loads of aggregate heaped at Kwajalein’s west end to a batch plant where the material is mixed to specification and transported to paving machines. Sited by automated surveyor machines, each grade paver lays down a precise band of material over stainless steel dowels.

The rods will strengthen the finished product and

fight corrosion.

Eric Peterson, project manager, foreman for asphalt laying operations and general superintendent for all the paving, oversees work crews following the paver. Technicians smooth all of the material by hand until it is seamless.

“You want your aggregates to be wet to control your moisture and how much water you must have,” Camp-

THE KWAJALEIN HOURGLASS

The Kwajalein Hourglass is named for the insignia of the U.S. Army’s 7th Infantry Division, which liberated the island from the forces of Imperial Japan on Feb. 4, 1944. The Kwajalein Hourglass is an authorized publication for military personnel, federal employees, contractor workers and their families assigned to U.S. Army Garrison-Kwajalein Atoll.

Contents of the Hourglass are not necessarily official views of, or endorsed by, the U.S. Government, Department of Defense, Department of the Army or USAG-KA. It is published Saturdays in accordance with Army Regulation 360-1. Phone: Defense Switching Network 254-5169 Local phone: 5-5169

Garrison Commander.....Col. Thomas Pugsley
Garrison CSM.....Command Sgt. Maj. Ismael Ortega
Public Affairs Officer.....Mike Brantley
Editor.....Jessica “JD” Dambruch



U.S. ARMY PHOTOS BY JESSICA DAMBRUCH

1) Construction workers at Bucholz Army Airfield smooth a new concrete pour in May 2022. 2) A team member measures the pristine surface of a cured block. 3) After a heavy rain, Kwajalein looks different. Pictured here, a small river runs through a mini canyon created by piles of aggregate material.

bell said, of materials mixing process. “Asphalt is almost the exact opposite. You end up getting all your aggregates and drying them out. So, there is no moisture before you add all the asphalt binder and other things. It’s a similar, yet different process.”

Before each batch mix is utilized, samples are tested in a curing house for precise control of all environmental

variables. While the concrete mix itself is not unique as far as construction goes, the weather and Kwajalein’s temperate climate have both posed surprises.

To prevent an unfit cure, personnel have protected their work by deploying huge sheets of tarp staged nearby on rollers against the island’s sudden, heavy rains.

“On our first test strip, the concrete layer was sup-

posed to crack all the way through—but it didn’t,” Campbell said. “Usually, you will place concrete in the night. In most places, there is a 20 to 30-degree difference between the day and night. On Kwajalein, it’s typically the same temperature. We adjusted the depth of our cut to kind of help things along. This is one of those weird things you watch out for.”

Months of work will be completed later this fall. Campbell looks forward to the not-so-distant day when an airfield operator turns the lights on over the refurbished airfield. It will be a sign of a job well done.

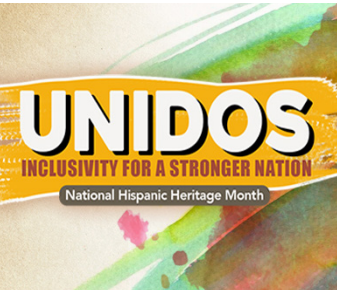
“We’ll get all of the electrical finished and tied back into the navigational aid building, turn over the controls to base ops, and give them the keys,” he said.

SEPTEMBER IS



PATRIOT DAY

Patriot Day is observed each year on Sept. 11 to commemorate the lives of the victims of the terror attacks on the World Trade Center.



HISPANIC HERITAGE MONTH

We are proud of the rich cultural heritage of our U.S. military service members. From Sept. 15 to Oct. 15, read more about National Hispanic Heritage Month in The Kwajalein Hourglass.



THE SCIENCE OF FALL

Fall begins September 22, on the autumnal equinox of the northern hemisphere. On that date, the sun crosses the celestial equator in a southerly direction. Though it’s 86 degrees outside, “pumpkin spice” season is just around the corner.



PREVENTION AWARENESS

The Department of Defense has declared September National Suicide Prevention Month.



BE BRAVE AND MAKE ART, SAYS ISLAND TEACHER

BY JESSICA DAMBRUCH

Colorful fish swim through the undersea mural at the George Seitz Elementary School art studio created by Kwajalein School System art teacher Jane Christy, who has taught generations of the island's art students.

Christy recently shared her thoughts about the long-term value of pursuing creative passion and making art on Kwajalein.

What do you enjoy the most about making art and teaching art in a small island town?

It's a small place, and I teach kindergarten through 12th grade. I get to see my little ones grow up.

What a gift that is. It is so cool to have students of mine come back with jobs and kids of their own.

In a small area, I think there is a lot of opportunity to make some fantastic connections with people over common feelings, ideas and concerns expressed through art.

I'm also inspired by my environment. It is reflected in my own work.

Why do you feel it is important for artists of any age to experience opportunities to make art and to meet people actively, working in creative fields?

Art is powerful. Throughout the early and teenage years, this is a great outlet for kids to express themselves and show what you want to say. Some kids can be shy. It's the same for adults. Art is the healthy place to express what you need to get out. It helps develop critical thinking and the creative problem-solving skills we use for our entire lives.

Sometimes "life happens," and we need to be creative to transcend the "storms." It brings people together.

Even if fine arts are not the future career path for a student, I believe getting in touch with your "inner designer" can help create more proficient doctors, engineers, musicians—and even help people in those careers find their way back to their passion as artists. Please tell us the story about how you chose visual art over a career in music.

I loved music when I was younger. Because of my high school class load I was unable to enroll in art classes from ninth through 11th grade. The only option left for a fine arts elective was choir.

As it turns out, I had a voice! I received a vocal music performance scholarship to Cornell University.

I discovered that showcasing vocal talents onstage has its own unique ner-

vousness, and my true passion continued to be art.

I loved creating, and I loved working with kids. I woke up one day and realized I am really an art teacher. I felt it in my bones, and it felt right.

I remember skipping down the stairs that day feeling as though the stars had aligned. If you have a passion for something, do it.

So often I come across people that have a great job they do well that might make them a lot of money. They are successful, but they are not fulfilled by their work.

I feel so bad for those people. I believe that's an issue many people face, but I do not share that issue. I'm thankful for what I have, all my students, and the work we do together.

What are your favorite media to work in?

I love clay. I start off in clay and I love sculpture predominately with clay. That's my thing. In school, we work with clay plaster. We draw, and we paint in both watercolor and acrylic tempera. We weave and collage from time to time, we make masks—just lots of fun stuff.

You never know what you're going to gravitate towards. Some kids are so excited about clay. It's my job to help them find their creative path.

You never know your potential until you give it a try.

Art is a little part of your soul out there for the whole world to see. That's what I love about art.

Learning how to make art and then share it is an exercise in bravery, right? You don't know what your peers are going to say.

It absolutely is a safe space to be vulnerable. You have room to say "This is my art, and this is me."

That's one of the beautiful things about art. What better way is there to practice your communication skills? The questions about what you create have answers which cannot be wrong. There is no "perfect"—not in art, and not in my classroom.

Sometimes I ask the class to share. Sometimes they are feeling brave. Others start to get into the spirit of sharing by the following week.

It's like they changed their minds: "I am feeling brave today." It was a word they didn't use before, but they put themselves out there. Not everyone is going to understand their art, but that's okay. They made it for themselves—not for everyone else.

We've been talking about bravery and how art helps students express their inner selves. What do you recommend that the island's young people do to stay in touch with their creativity? What sorts of creative practices do you encourage them to try?

Anything that drives their creativity—it could be mowing the lawn in a very interesting pattern for dad!

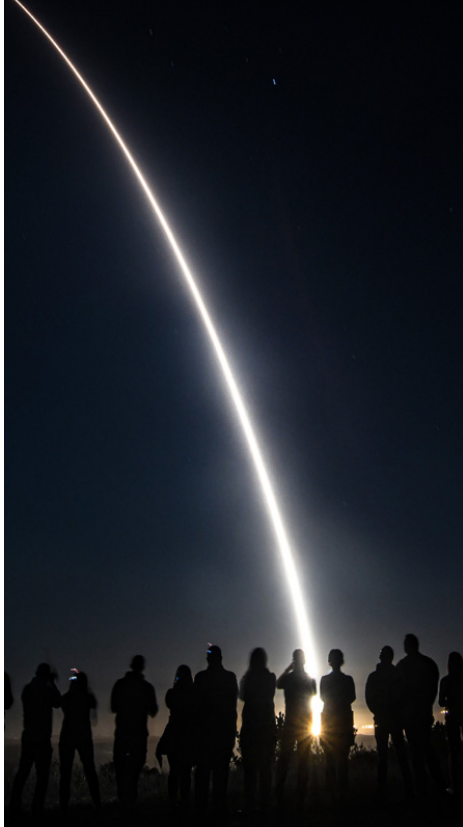
It could be exploring new possibilities in the kitchen for mom and cleaning up your mess. It could be anything music related, or a visit to one of our island craft fairs. We have some wonderful artists here.

The more exposure students can have to art and being creative in some fashion will make life here more wonderful.



U.S. ARMY PHOTO BY JESSICA DAMBRUCH

1) An original seaside collage by Jane Christy. 2) Visitors enter the George Seitz Elementary School art studio through a door decorated with an undersea mural in March 2021.



U.S. AIR FORCE PHOTO BY AIRMAN 1ST CLASS RYAN QUIJAS

GT244 LAUNCHES FROM VANDENBERG

U.S. SPACE FORCE REPORT

VANDENBERG SPACE FORCE BASE, Calif.— An operational test launch of an Air Force Global Strike Command unarmed Minuteman III intercontinental ballistic missile launched from Vandenberg Space Force Base Wednesday, Sept. 7, at 1:13 a.m. Pacific Daylight Time.

The purpose of the ICBM test launch program is to validate and verify the safety, security, effectiveness, and readiness of the weapon system, according to Air Force Global Strike Command.

Col. Bryan Titus, Space Launch Delta 30 vice commander, was the launch decision authority.

“The Airmen and Guardians who perform this vital mission are some of the most skillfully trained and dedicated personnel in America’s Air and Space Force,” said Titus. “These test launches demonstrate the readiness of U.S. nuclear forces and provide confidence in the lethality and effectiveness of the nation’s nuclear deterrent.”

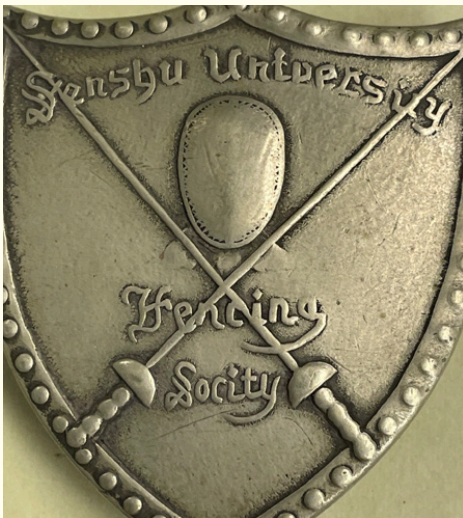
For questions regarding the launch window or Vandenberg SFB range operations, contact Space Launch Delta 30 Public Affairs at 805-606-3595 or SLD30.pa.workflow@us.af.mil.

For queries regarding the ICBM test launch mission and missile, contact AFGSC Public Affairs at 318-456-1305 (After Hours 318-532-1215) or afgsc.pa.workflow@us.af.mil.

TAKING A TRIP? ANTICIPATE YOUR TRAVEL NEEDS

If you take a trip, be sure to get all routine care before you go, but if you need urgent care, call the Nurse Advice Line first at 1-800-TRICARE, option 1.

GIVE THIS ARTIFACT YOUR BEST GUESS



BY JESSICA DAMBRUCH

Even years later, it is never too late to return an object to Kwajalein. This week’s mystery object is something of a lost-and-found story success story.

The item was recently returned to Kwajalein Atoll after being recovered on a shipwreck dive in the 1960s, said Kwajalein Archaeologist Susan Underbrink.

The patina of time cannot obscure the distinctive insignia on the small metal chevron. Metallic in color, it also bears an inscription on its back.

The KHG team has never seen one of these items before. Let’s see who knows what this mystery item could be. Send your best guesses in to Underbrink at 5-8867 or susan.underbrink@vecrus.com. Guesses from off-island are welcome.

Check out the latest mystery artifact from Kwajalein Archaeology. Any guesses as to what this object could be?

PHOTOS COURTESY OF THE KWAJALEIN ARCHAEOLOGY OFFICE



IT’S IMPORTANT TO ANTICIPATE YOUR TRAVEL NEEDS DURING THE COVID-19 PANDEMIC.

- If you have regular prescriptions, pack enough to last you for the entire trip.
- Pack alcohol-based hand sanitizer (at least 60% alcohol), and keep it within easy reach.
- Bring cloth face coverings to wear in public places.
- Pack food and water for your trip in case restaurants and stores are closed.
- If staying in a hotel, motel or other lodging, see guidance from the Centers for Disease Control and Prevention on how to clean and disinfect your room.



HERE THERE BE UNICORNFISH



📷 COURTESY OF JORDAN VINSON

BY JORDAN VINSON

This historic “Nature SHot” article first ran in the Kwajalein Hourglass on Sept. 21, 2019.

This spotted unicornfish, *Naso brevirostris*, was photographed during a recent scuba dive at Troy’s Coral Head, located north of Carlson (Enubuj) island. These funny looking unicorns are reef dwellers, and they’re found throughout the Indo-Pacific region, from the Red Sea and the Marquesas to the Hawaiian Islands and Micronesia.

Their most striking feature is, of course, the horn-like protrusion jutting out of their heads, hence their common and scientific names. (*Naso* means nose in Latin.) Surprisingly, there is no consensus among marine biologists as to the true purpose of this horn, though its role in the fish’s defenses has been ruled out. Instead, when they get into fisticuffs they use their sharp tails to lash their predators, which range from larger, pe-

lagic fish to sharks; or they simply flee.

Naso Brevirostris is a vegetarian, spending its time feeding on small plants, vegetation and algae. In fact, its tiny mouth is perfectly shaped and sized to pluck algae from coral without damaging the coral with its teeth—talk about a win-win for both coral and fish. They are found in the lagoons and outer reef slopes in the Marshalls, living at various depths, from 10 feet down in the sun-washed shallow coral tops to 46 meters in depth. And they tend not to school together, preferring small groups, sometimes found in pairs.

The International Union for the Conservation of Nature has the spotted unicornfish listed as a species of least concern. These fish are not a focus of species conservation.

Sources:

<https://www.leisurepro.com/blog/explore-the-blue/whitemargin-unicornfish/>

<https://www.fishbase.se/summary/Naso-brevirostris>

Island and Math Humor

Even if you’re not preparing for the PSAT or SAT with Don Engan’s math students, you may need a joke. Send your best jokes and puns to The Kwajalein Hourglass at kwajalein-hourglass@vectrus.com.

I thought I saw an eye clinic on an Alaskan island, but it was just an optical Aleutian.

What do you use to find your way around Alcatraz Island? A con-tour map.

I once followed the sine to trigonometry island because I wanted a tan.
—Punsandoneliners.com

Have you heard the one about the statistician?
Probably.

Why is statistics never anyone’s favorite subject?
It’s just average.

What did the triangle say to the circle?
“You’re pointless.”

I had an argument with a 90° angle.
It turns out it was right.

Why was the obtuse triangle always upset?
Because it’s never right.

Why was math class so long? The teacher kept going off on a tangent.

Did you hear about the over-educated circle?
It has 360°!

Parallel lines have so much in common. It’s a shame they’ll never meet!
—Prodigygame.com



NAMU COMMUNITY OUTREACH

Your help is needed to provide charitable support for the children and families of Namu Atoll. Donations accepted now through Oct. 7.

Draw a name for one of the 121 children chosen to participate in this program at the RMI Liaison Office in downtown Kwajalein.

Donations of school supplies, book bags, clothing, undergarments, sports equipment (soccer/basketballs) and toys are welcome. Please donate any gently used household goods for families.

Donations must be received no later than Oct. 7 at the RMI office for delivery on Oct. 10 to Namu.

Volunteers are needed. Contact Chief Warrant Officer 3 Michael Schafer at 5-3421 or Kalani Riklon at 5-3600 for more information.

U.S. ARMY SPACE AND MISSILE DEFENSE COMMAND HISTORY



U.S. ARMY PHOTOS BY JESSICA DAMBRUCH

RTS RANGE DIRECTOR PROMOTES SOLDIERS



BY JESSICA DAMBRUCH

U.S. Army Garrison-Kwajalein Atoll offers congratulations to two U.S. Army Soldiers promoted in ceremonies on Roi-Namur Wednesday, Sept. 18, 2019.

Ronald Reagan Ballistic Missile Test Site Range Director Lt. Col. Jake Wamsley awarded promotion honors to Chief Warrant Officer 2 Michael J. Mitchell, 500th MI BDE; and Maj. Cameron Ehrenbeit, U.S. Space and Missile Defense Command, ROC-H Huntsville Space Operations Directorate.

“It’s extremely rare to have the opportunity to perform these honors here,” said Wamsley of the double promotion.

Following the ceremonies, the Soldiers celebrated with family members, Army personnel and RTS staff at a local beach.

As they enjoyed the water and beautiful weather, the Soldiers discussed their future plans and goals.

Ehrenbeit shared his thoughts on reaching a significant military career milestone on a tropical island.

“It doesn’t get much better than this,” he said.

1) Ronald Reagan Ballistic Missile Test Site Range Director Lt. Col. Jake Wamsley, RTS director, right, leads the U.S. Army promotion ceremonies for Maj. Cameron Ehrenbeit, U.S. Space and Missile Defense Command, ROC-H Huntsville Space Operations Directorate. 2) Wamsley, right, congratulates Chief Warrant Officer 2 Michael J. Mitchell, 500th MI BDE on earning his promotion Sept. 18, 2019.

ISLAND REORIENTATION

PUBLIC SAFETY ANNOUNCEMENT

Ever hear the siren test and wonder what it means? Here are the basics of the garrison’s siren warning system.

PENDING DISASTER AND SIREN WARNING SYSTEM

Two short blasts repeated five times at 25 second intervals. Tune radio to 101 FM and TV channel 14-1.

EVACUATE TO SHELTERS

One three-minute warble.

FIRE RECALL

One minute steady blast

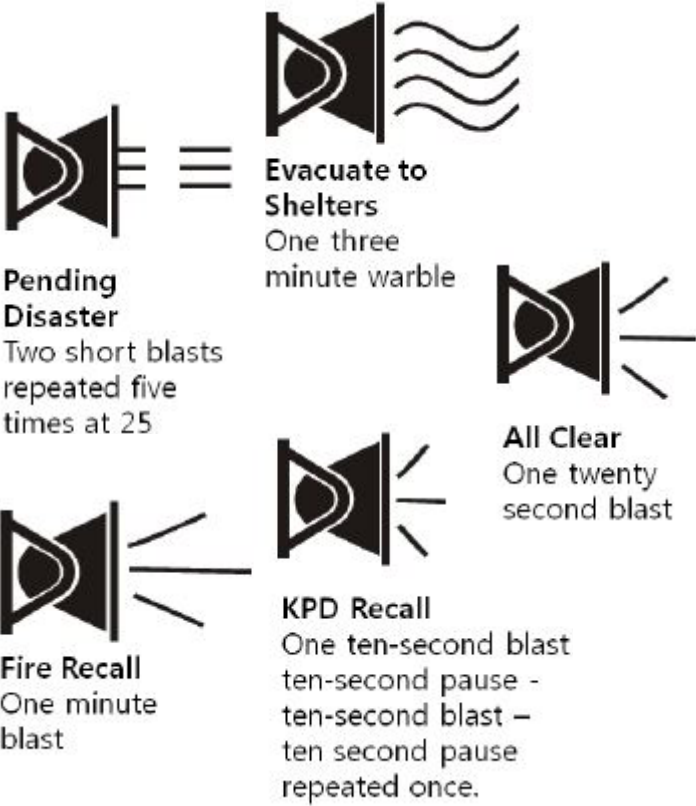
KPD RECALL

One 10-second blast, a 10-second pause, 10-second blast and a 10-second pause. The entire sequence will repeat.

ALL CLEAR

One 20 second blast. This blast also sounds each work day at 6 p.m.

New to Kwajalein? Need a refresher on where to go? No worries: The Kwajalein Hourglass can help. Check back here each week for island how-to’s. To submit a request for information or a helpful tip, write to kwajaleinhourglass@vectrus.com.



USAG-KA HPCON LEVEL BRAVO: MODERATE

Update Issued Sept. 10, 2022

Utilize measures from HPCON B with the following modifications:

- Community members and workers are expected to maintain safe practices at all times. This includes maintaining adequate social distancing to the best extent possible, proper personal hygiene, and having a mask available at all times.
- DFAC (Zamperini & Café Roi) may resume sit-down and take-out service for both meal card holders and non-meal card holders.
- AAFES Food Court, Bakery, Outrigger, and American Eatery are open for dine-in and take-out service. Reduced seating options should be considered to ensure social distancing.
- Space-A access and non-essential travel to ROI / Ebeye is authorized.
- The Non-Resident Domestic Workers and Unofficial Guest Programs are authorized. Overnight guests (48os) are limited to guests from within the RMI. The full opening of the Overnight Guest (48o) program will be implemented in the coming weeks. Approval process remains unchanged.
- Social gatherings are authorized though social distancing should be considered in planning.
- All Community Activities, MWR, social events, and public or private gatherings are authorized, social distancing should be considered.
- Ocean View and Outrigger Bar Services may reopen for full service, social distancing and alternative seating arrangements (maximizing outdoor seating and reduced bar seating) should be considered.
- Masks are no longer mandatory for students and teachers. Masks should remain at the ready and on your person.

Effective Sept. 13, 2022

- Non-essential services (fitness centers, leisure and recreational facilities, beauty/barber shops, clubs, and non-essential retail) will be at < 75% maximum occupancy. Social distancing and mask at the ready requirements must be met.
- Increase Workplace occupancy to 100%.
- Mandatory Mask wear is no longer required in indoor common areas and communal work spaces including schools/CDC/CYS.
- Masks are still required on all government-owned or contract-operated vehicles, planes and marine assets (when not alone).
- Increase Common Area Occupancy to 75% of maximum occupancy. Managers should implement reduced seating options in common areas to maintain physical distancing (Zamperini, Food Court, Shopette/PX, Bakery, Ocean View Club, and the Golf Club House).

WHAT TO DO WHEN YOU GET COVID ON KWAJALEIN

Kwajalein Hospital COVID-19 Hotline: 5-1103

All persons with symptoms must be tested, either at home with a home test or at the Kwajalein Hospital.

All positive results must be called in to the COVID-19 Hotline, during working hours at 5-1103.

Employees should also notify their respective human resources departments.

Free COVID-19 test kits are available online at www.COVID19.gov/tests. On Kwajalein, the community will utilize the Test and Treat approach as outlined by the Centers for Disease Control and Prevention.

If you have any symptoms (fever or chills; cough, shortness of breath or difficulty breathing; fatigue; muscle or body aches; headaches; new loss of taste or smell; a sore throat; congestion or a runny nose; nausea, vomiting or diarrhea) isolate yourself, correctly wear a mask over your mouth and nose, and get tested.

- Please call the COVID-19 Hotline at 5-1103 before visiting the hospital.
- If you are experiencing a medical emergency, call 911.
- Drink plenty of fluids and manage your symptoms with Acetaminophen (Tylenol), Ibuprofen (Motrin/Advil) and/or over the counter cough remedies and decongestants.
- Utilize an island buddy or your human resources department to help with groceries, errands, trash removal and other needs.

If you test positive:

You are required to remain at home for five days, and you must retest on day five. This result must also be called in to the COVID-19 Hotline. If others are in the home, correctly wear your mask covering your mouth and nose, isolate as much as possible and do not share items. Use a separate washroom if possible,

and frequently wash your hands.

- If you retest positive:** Remain in your home and test again in five days.
- If you retest negative:** After five days and a negative test, you may leave your home, but must correctly wear your facemask covering your mouth and nose whenever you are indoors and within six feet of any person. You may return to work or school. You must call the COVID-19 Hotline with the results of your retest, positive or negative.

Close Contact:

If you have been less than six-feet away from a tested positive person for a cumulative total of 15 minutes or more over a 24-hour period

- If you have symptoms,** get tested.
- If you have no symptoms:**
- Correctly wear a mask and monitor yourself for symptoms. You may go to work or school so long as you correctly wear your mask covering your mouth and nose.
- Get tested five full days after the Close Contact whether you have symptoms or not.

If you have symptoms but test negative:

- You may still have COVID-19.
- Notify your human resources representative of your illness, which may be unrelated to COVID-19. Follow your company HR policies as regards sickness.
- Normally, stay home** until you have gone 24 hours without symptoms and/or fever (without fever medications).
- If symptoms persist,** get tested again.

RMI employees should receive their COVID-19 tests through the Leiroj Kitlang Kabua Memorial Health Center on Ebeye.



Schedule your COVID-19 Vaccine.

Contact Sean Holbrook at 5-2223
or email sean.holbrook@internationalsosgs.us



Mosquito

Most Dangerous Insect in the World

ROI-NAMUR MOSQUITO FOGGING SCHEDULE

Tuesday, Sept. 13 through Wednesday, Sept. 14

5:30-7:30 p.m.

Weather dependent
Avoid fogged area for ~30 minutes

Fogging with Eco-friendly EcoVia EC Insecticide

- Liquid botanical oil insecticide
- Active ingredients include Thyme Oil & Rosemary Oil
- Safe to use in and around homes and near water
- Safe to use around children and pets
- Do your part to eliminate mosquitoes:

- Check for standing water where mosquitoes breed
- Dump any accumulated water at least weekly
- Manage vegetation and eliminate accumulated leaves

Do your part to eliminate flies:

- Do not add food waste directly into open trash cans such as the Emon Beach trash containers, large black trash cans, or residential green trash receptacles.
- Always seal food and animal waste inside trash/plastic bags before adding to trash cans.
- Periodically clean outdoor trash receptacles.

Notice of Availability USAG-KA Draft Document of Environmental Protection for Drinking Water Treatment

The U.S. Army - Kwajalein Atoll (USA-KA) Environmental Standards (UES) require specific USAKA activities with the potential to affect public health and the environment must be defined in a Document of Environmental Protection (DEP). The UES further provides a review and comment period by the public and the regulatory agencies on the draft DEP.

The Draft DEP for the continued activity of Drinking Water Treatment includes the operations and requirements for providing safe drinking water to the U.S. Army Garrison - Kwajalein Atoll.

The public is invited to review and comment on the Draft DEP. The Draft DEP and the UES are available for review at the Grace Sherwood Library (Kwajalein Island), the Roi-Namur Library, and the RMI Environmental Protection Authority (RMIEPA) offices on Ebeye and Majuro.

Written comments regarding the Draft DEP can be directed to:

Patrick Chauvey
U.S. Army Garrison-Kwajalein Atoll
Attn: USAG-KA Environmental Coordinator
PSC 701 - Building 730
APO AP 96555-9998

Or sent electronically to:
Patrick.R.Chauvey.civ@army.mil

A period of at least 30 days will be provided for public comment. Comments on the Draft DEP should be postmarked no later than October 3, 2022.

Naan In Kokabiloklok USAG-KA Draft Ikiyen Wewein Ad Kojbarok Jukjukin Ped EoKab Men ko Bwinnid

USAG-KA Environmental Standards (UES) ej aikuj bwe aolep makitkit ko an USAG-KA make im remaron jelet ejmour eo an jukjukin ped eo ren alikar ilo draft eo naetan Document of Environmental Protection (DEP). UES eo ej bareinwot laajrake juon ien nan an public im agency ko kenono im bok melele ko ikijen draft in..

DEP in ej wonmanlok kin makitkit ko an jikin Komman Dren eo ilo jukjukin ped eo ekoba aolep jermal im kakien ko nan kejbaroke dren in draak eo ilo U.S. Army Garrison - Kwajalein Atoll.

Aolep rej ruwainene nan kenono im bok melele ko ikijen draft in. DEP in kab UES jimor bellok nan adwoj riit im melele kaki ilo library ko ad ion Kwajalein - Grace Sherwood Library im Roi-Namur Library, im bareinwot ilo opij ko an RMI Environmental Protection Authority ion Ebeye kab Majuro.

Kajitok im Kakobaba ko remaron etal non:

Patrick Chauvey
U.S. Army Garrison-Kwajalein Atoll
Attn: USAG-KA Environmental Coordinator
PSC 701 - Building 730
APO AP 96555-9998

Ak jilinko ilo email:
Patrick.R.Chauvey.civ@army.mil

Enaj bellok iumwin 30 raan non jabdrewot eo ekonaan likit melele ko ak wawein im lemnak ko kin DEP Draft in. melele kein rej aikuj postmark mokta jen October 3, 2022.



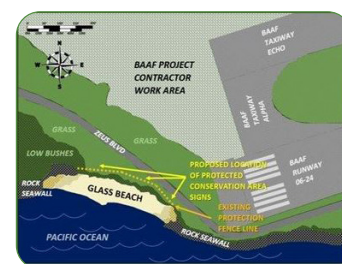
E-WARENESS Asbestos Removal and Waste Management

There are specific environmental requirements for controlling asbestos emissions and properly disposing of asbestos-containing waste.

Contact Environmental at 5-1134 for more information.

Wawein im kilen komakitkit kopej in asbestos ko:Emoj karoki wawein ko non bobrae an ajeeded bunal in asbestos im wawein ko retiljok non jolok kwobej ko ewor asbestos ie.

Kir Environmental ilo 5-1134 non melele ko relap lok.



Glass Beach Off-Limits To Unauthorized Personnel

The beach at the western end of the runway, known as "Glass Beach," is temporarily designated as a "Protected Conservation Area."

Access is permitted only to government officials/contract employees involved in the surveillance or management of the conservation area until further notice.

No unauthorized personnel are permitted.

Contact Patrick Chauvey, 5-0129, for information.



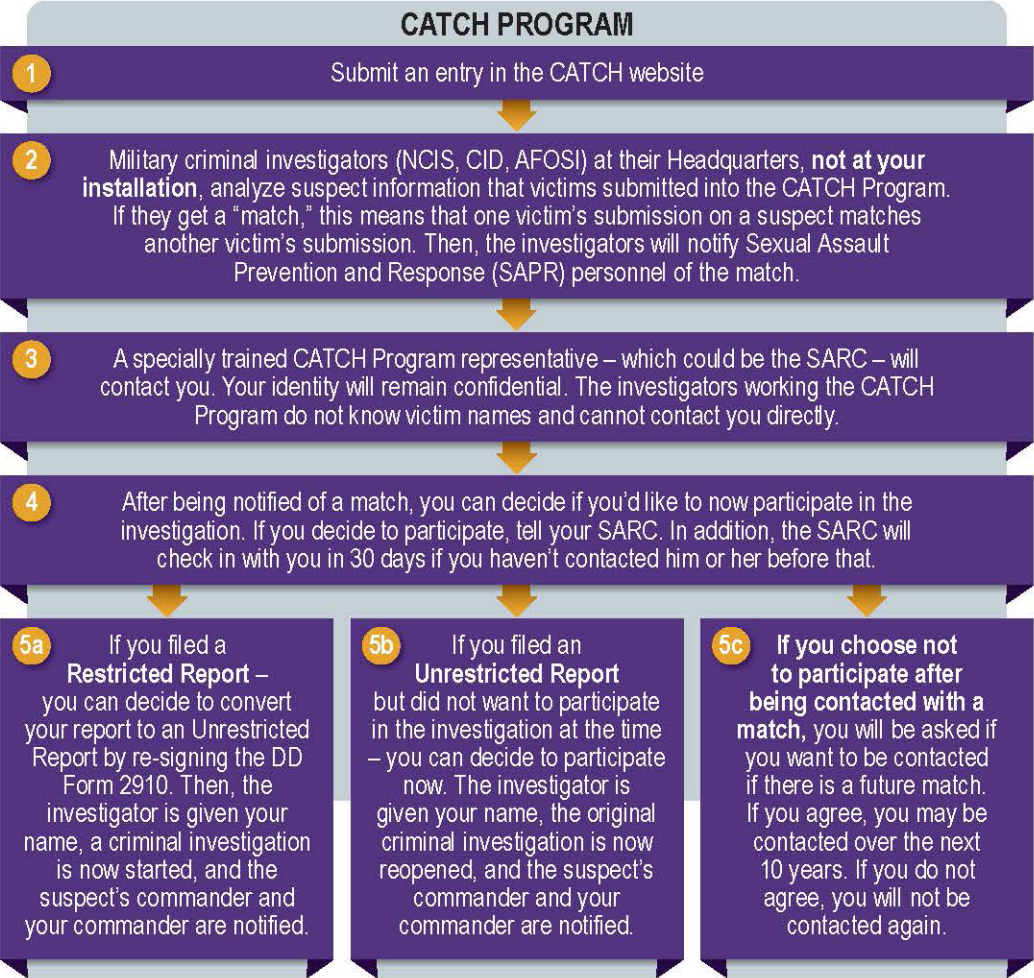
DEPARTMENT OF DEFENSE SEXUAL ASSAULT PREVENTION



Catch a Serial Offender (CATCH) Program Victim Info Sheet

The CATCH Program gives people making a sexual assault report where the name of the suspect is not known by law enforcement an **opportunity to anonymously submit suspect information** to help the Department of Defense identify serial offenders.

To make a CATCH entry, contact the Sexual Assault Response Coordinator (SARC) or Victim Advocate (VA). They will explain the program and provide you a user name and password to gain access to the CATCH website. You are eligible as long as you filed a sexual assault report with a DD Form 2910 and the name of the suspect is not known by law enforcement. Your entry is anonymous. If your entry “matches” another entry or an investigation, you will be contacted and you will then decide whether to participate in the investigation. **Your participation in the CATCH Program is voluntary.** If there is a match, your name will not be provided to law enforcement without your permission. **You may decline to participate in the process at any point, even after being notified that there was a potential match.** There shall be no adverse consequences if you do not agree to participate.



FREQUENTLY ASKED QUESTIONS

- ▶ Do I have to provide my name?

No, you cannot share your name; the process is anonymous.
- ▶ What information do you need about the suspect?

The top 5 things that we would like you to provide, but **only** if you **know** them, are the suspect name, suspect phone number or social media username, suspect rank, date of offense, and location of the sexual assault. You can provide as much information as you can remember and feel comfortable sharing. You only need to complete one field to be able to submit an entry.
- ▶ How long do you keep my entry in the CATCH system?

Each entry is kept for 10 years. This means that you could be contacted at any time over the next 10 years if there is a potential match, as long as you don’t opt out and your contact information doesn’t change.
- ▶ What about my Sexual Assault Forensic Examination (SAFE) Kit?

The SAFE Kit corresponding to your Restricted Report will be retained for 10 years in order to avoid the unintended destruction of a Restricted Reporting SAFE Kit affiliated with a CATCH entry.
- ▶ What if I change my mind, can I opt out of the CATCH Program once I’ve made my entry?

Yes, you can opt out at any time – just tell your SARC.
- ▶ I have more questions. Who can I speak with before deciding?

If you are eligible, your SARC or SAPR VA can offer you a referral to a Special Victims’ Counsel or Victims’ Legal Counsel, who is your personal attorney (not a prosecutor or a defense attorney). They can help answer your legal questions about the CATCH Program.

FOR MORE INFORMATION ON THE CATCH PROGRAM, VISIT THE SEXUAL ASSAULT PREVENTION AND RESPONSE OFFICE CATCH WEBPAGE AT WWW.SAPR.MIL/CATCH. FOR CONFIDENTIAL 24/7 CRISIS INTERVENTION, CALL OR VISIT THE DOD SAFE HELP-LINE AT 877-995-5247 OR WWW.SAFEHELPLINE.ORG.

Per USAG-KA Regulation 420-1, vegetation (e.g. trees, bushes, plants) may not be planted in the ground without an approved permit. Residents may be asked to remove items if planted without approval. In addition, do not place sprouted coconuts in your yard. Please discard with your yard waste.

Questions? Contact: 5-3550

DON'T LET YOUR GERMS GO FOR A RIDE



COVER YOUR COUGHS AND SNEEZES

with a tissue or use the inside of your elbow.
If you use a tissue, throw it in the trash, and
wash your hands right away.

If you can't wash your hands, ask
your teacher or another adult
for hand sanitizer



cdc.gov/coronavirus

MOVIES

Movies begin at 7:30 p.m.

YUK THEATER -KWAJALEIN

Saturday, Sept. 10
"Madagascar"
(PG) 130 min.

Sunday Sept. 11
"Days of Thunder"
(PG-13) 107 min.

Monday Sept. 12
"Goodfellas" (R) 145 min.

Saturday, Sept. 17
"Madagascar 2 – Escape to Africa"
(PG) 89 min.

Sunday, Sept. 18
"Downton Abbey – A New Era"
(PG) 124 min.

Monday, Sept. 19
"Magic Mike" (R) 110 min.

Saturday, Sept. 24
"Madagascar 3 – Europe's Most
Wanted"
(PG) 93 min.

Sunday, Sept. 25
"Hidden Figures" (PG) 127 min.

Monday, September 26
"Magic Mike XXL" (R) 115 min.

Saturday, Oct. 1
"Clifford The Big Red Dog"
(PG) 96 min.

Sunday, Oct. 2
"Footloose" (1984)
(PG) 94 min.

Monday, Oct. 3
"Firestarter"
(R) 107 min.

C-BUILDING, ROI-NAMUR

Saturday, Sept. 10
"Murder on the Orient Express"
(PG-13) 114 min.

Sunday, Sept. 11
"Ant Man and the Wasp"
(PG-13) 118 min.

Saturday, Sept. 17
"Paul, Apostle of Christ"
(PG-13) 108 min.

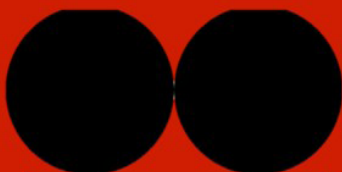
Sunday, Sept. 18
"Solo: A Star Wars Story"
(PG-13) 135 min.

Saturday, Sept. 24
"Mama Mia! Here We Go Again"
(PG-13) 114 min.

Sunday, Sept. 25
"Rampage" (PG-13) 107 min.

Saturday, Oct. 1
"Flatliners" (PG-13) 109 min.

Sunday, Oct. 2
"Once Upon a Time in Hollywood"
(R) 161 min.



The Movie
**"Clifford The
Big Red Dog"**
(PG) 1h 36min.

Yuk Theater

MOVIE NIGHT

WITH DAD

OCTOBER 1 AT 7:30 P.M.



DEPARTMENT OF THE ARMY
UNITED STATES ARMY GARRISON KWAJALEIN ATOLL
UNIT 17001, Box 1 APO AP 96555

AMIM-KWG-ZA 10 September 2022

MEMORANDUM FOR Subordinate Commands, Tenant Units, and All Individuals Located on U.S. Army Garrison Kwajalein Atoll

SUBJECT: U.S. Army Garrison - Kwajalein Atoll (USAG-KA), COVID Work Safe, Live Safe Order #5

PURPOSE. This order seeks to educate the residents and visitors located on USAG-KA and identifies conduct that is prejudicial to good order and discipline, health, and safety of all personnel residing or working on the USAG-KA.

AUTHORITY. 10 U.S.C. Chapter 47 (Uniform Code of Military Justice); Title 18 United States Code 1382; Army Regulation 600-20 Army Command Policy; USAG-KA Policy 8-1, Command Sponsorship, USAG-KA Regulations 190-10, Entry & Exit Control; 190-50, Administrative Bar Actions, and W52P1J-19-F-0398 Contract Technical Exhibit I.

APPLICABILITY. This Order applies to all individuals located on USAG-KA including those subject to military orders, DoD personnel, dependents, contractors, and individuals stationed, and/or attached to units on USAG-KA, whether on or off the installation. This includes units, teams, and organizations rotating through and/or visiting USAG-KA for any reason including but not limited to missions, inspections, and training. For purposes of this memorandum, USAG-KA includes the eleven defense sites of the Kwajalein Atoll, all work and training areas, housing of all kinds, and all infrastructure and locations not specified.

1.USAG-KA is currently at HPCON-B, the following expectations and actions apply:

- Community members and workers are expected to maintain safe practices at all times. This includes maintaining adequate social distancing to the best extent possible, proper personal hygiene, and having a mask available at all times.
- DFAC (Zamperini & Café Roi) may resume sit-down and take-out service for both Meal Card Holders and Non-Meal Card Holders.
- AAFES Food Court, Bakery, Outrigger, and American Eatery are open for dine-in and take-out service. Reduced seating options should be considered to ensure social distancing.
- Space-A access and non-essential travel to ROI / Ebeye is authorized.
- The Non-Resident Domestic Workers and Unofficial Guest Programs are authorized. Overnight guests (48os) are limited to guests from within the RMI. The full opening of the Overnight Guest (48o) program will be implemented in the coming weeks. Approval process remains unchanged. •Social gatherings are authorized though social distancing should be considered in planning.
- All Community Activities, MWR, social events, and public or private gatherings are authorized, social distancing should be considered.
- Ocean View and Outrigger Bar Services may reopen for full service, social distancing and alternative seating arrangements (maximizing outdoor seating and reduced bar seating) should be considered.
- Masks are no longer mandatory for students and teachers. Masks should remain at the ready and on your person.

and non-essential retail) will be at < 75% maximum occupancy. Social distancing and mask at the ready requirements must be met.

- Increase workplace occupancy to 100%.
- Mandatory Mask wear is no longer required in indoor common areas and communal work spaces including schools/CDC/CYS.
- Masks are still required on all government-owned or contract-operated vehicles, planes and marine assets (when not alone).
- Increase Common Area Occupancy to 75% of maximum occupancy. Managers should implement reduced seating options in common areas to maintain physical distancing (Zamperini, Food Court, Shopette/ PX, Bakery, Ocean View Club, and the Golf Club House).

2. STATEMENT OF MILITARY PURPOSE AND NECESSITY. The arrival of COVID-19 to the Republic of the Marshall Islands (RMI) requires balance between mitigation measures and maintaining readiness. These measures preserve force readiness, limit the spread of COVID, and the health and welfare of service members, DA civilian employees, contractors, families, and the Marshall Islands.

3. COMPLIANCE WITH LOCAL HEALTH ORDERS. All service members, family members, DA civilians, and contractors, both on and off post, will comply with all applicable provisions of Command authority and respect the laws of the RMI regarding public health orders. In the event this order imposes a more restrictive requirement than the RMI, the terms of this order shall take precedence over any order issued by the Marshall Islands.

4. VISITATION RESTRICTIONS. The Non-Resident Domestic Workers and Unofficial Guest Programs are now authorized. Overnight guests (48os) are limited to guests from within the RMI. The full opening of the Overnight Guest (48o) program will be implemented in

the coming weeks. Approval process remains unchanged.

5. DINING-IN. DFAC (Zamperini Cafeteria & Café Roi) are now open for sit-down and take-out for both meal card holders and Non-Meal Card Holders. AAFES Food Court, Bakery, Outrigger, and American Eatery are open for dine-in and take-out service, reduced seating options should be in place to ensure social distancing.

6. RETAIL SHOPPING GUIDANCE. In-person shopping is authorized at less than 75%maximum occupancy. Social distancing and mask at the ready requirements must be met.

7. ESSENTIAL ACTIVITIES & TRAVEL. For purposes of this order “essential activities or services” includes, but is not limited to: official government duties, care of others (including adult and child caregivers). Space-A access and non-essential travel to Roi and Ebeye/3rd Island is authorized.

8. PRIVATE & PUBLIC GATHERINGS, MILITARY CEREMONIES. All Community Activities, MWR, social events, and public or private gatherings are authorized. Social distancing should be considered in planning and execution.

9. UNIT FORMATIONS & PHYSICAL TRAINING. Conduct physical training IAW the current HPCON guidance.

10. PLACE OF DUTY & TELEWORK. All personnel subject to this order will report to their regular place of duty during normal work hours. Current workplace guidelines allow for 100 percent occupancy. Social distancing should be enforced and masks shall be at the ready.

11. DUTY UNIFORM. Personnel are required to have a mask at the ready while in any duty uniform. While in a federal facility, or performing official duties, personnel including all military, civilian, contractors, and family members are required to have a face covering that complies with applicable CDC guidance at the ready. This requirement does not apply while driving a cart or bike alone, eating/drinking, or conducting physical training outdoors.

Effective 13 SEPT 22:

- Non-essential services (fitness centers, leisure and recreational facilities, beauty/barber shops, clubs,

12. MASKS IN FEDERALLY FUNDED TRANSPORTATION.
All individuals will wear a mask on DoD aircraft, boats and other maritime conveyances, and buses traveling into, within, or out of the United States, and indoor DoD transportation hubs, regardless of vaccination status and CDC COVID-19 Community Levels. Maintain social distancing and mask wear is optional at outdoor areas of these conveyances (if such outdoor areas exist on the conveyance) or while outdoors at transportation hubs, if these areas are uncrowded. Masking requirements apply whether the DoD aircraft, boats and other maritime conveyances and buses are located inside or outside the United States, but exclude these conveyances and other tactical vehicles and craft in their operational environment.

13. ACTIVITIES.
All activities (social, recreational, religious, etc.), businesses or facilities available for use on USAG-KA are affected by current HPCON B measures. The Garrison Commander will determine rules governing the operation (including hours and maximum occupancy) of on-post activities, business, or facilities. Special categories of services include schools, CDC, and CYS.

14. INSTALLATION ACCESS.
The Non-Resident Domestic Workers and Unofficial Guest Programs are authorized. Overnight guests (480s) are limited to guests from within the RMI. The full opening of the Overnight Guest (480) program will be implemented in the coming weeks. Approval process remains unchanged.

15. PUNITIVE ORDER.
Paragraphs 3, 8, 9, 11, and 12, of this order are punitive. Persons subject to the UCMJ who violate this order may be punished according to its provisions or face adverse administrative action. Persons not subject to the UCMJ may face administrative sanctions to include suspension or revocation of privileges and removal from the installation, suspension or termination of access to Government facilities and possible criminal prosecution.

16. INDIVIDUAL AND UNIT COMMANDER RESPONSIBILITY.
Individuals subject to this order have the duty to know and understand these prohibitions as well as all applicable provisions of local authority public health orders. Supervisors will ensure their personnel are briefed on the prohibitions and requirements of this order.

17. EFFECTIVE DATE.
This order is effective immediately. This order supersedes all previous COVID Work Safe, Live Safe Orders. This order will remain in effect until rescinded by me or superseded by a new order.


Current USAG-KA HPCON level is

B

HPCON B Moderate

Utilize measures from HPCON B with the following modifications:

- Community members and workers are expected to maintain safe practices at all times. This includes maintaining adequate social distancing to the best extent possible, proper personal hygiene, and having a mask available at all times.
- DFAC (Zamperini & Café Roi) [may resume sit-down and take-out service for both](#) Meal Card Holders and Non-Meal Card Holders.
- AAFES Food Court, Bakery, Outrigger, and American Eatery are open for [dine-in and take-out service](#). Reduced seating options should be considered to ensure social distancing.
- Space-A access and non-essential travel to ROI / Ebeye [is authorized](#).
- The Non-Resident Domestic Workers and Unofficial Guest Programs [are authorized](#). Overnight guests (480s) are limited to guests from within the RMI. The full opening of the Overnight Guest (480) program will be implemented in the coming weeks. Approval process remains unchanged.
- Social gatherings [are authorized](#) though social distancing should be considered in planning.
- All Community Activities, MWR, social events, and public or private gatherings [are authorized](#), social distancing should be considered.



Current USAG-KA HPCON level is

B


HPCON B Moderate

Utilize measures from HPCON B with the following modifications:

- Ocean View and Outrigger Bar Services may [reopen for full service, social distancing and alternative seating arrangements](#) (maximizing outdoor seating and reduced bar seating) should be considered.
- Masks are no longer mandatory for students and teachers. Masks should remain at the ready and on your person.

Effective 13SEP22:

- Non-essential services (fitness centers, leisure and recreational facilities, beauty/barber shops, clubs, and non-essential retail) will be at [≤ 75% maximum occupancy](#). Social distancing and mask at the ready requirements must be met.
- Increase Workplace occupancy to [100%](#).
- Mandatory Mask wear is [no longer required](#) in indoor common areas and communal work spaces including schools/CDC/CYS.
- Masks are [still required](#) on all government-owned or contract-operated vehicles, planes and marine assets (when not alone).
- [Increase](#) Common Area Occupancy to [75% of maximum occupancy](#). Managers should implement reduced seating options in common areas to maintain physical distancing (Zamperini, Food Court, Shopette/PX, Bakery, Ocean View Club, and the Golf Club House).



KWAJALEIN REMEMBERS ...



“Even the smallest act of service, the simplest act of kindness, is a way to honor those we lost, a way to reclaim that spirit of unity that followed 9/11.”



Due to U.S. Army Garrison’s current HPCON level, we are not observing an in-person ceremony this year.

Do you have a question for USAG-KA Command about the HPCON levels? Please call the Commander’s Hotline at 5-1098.

COMMUNITY CLASSIFIEDS

The community wants to hear from you. Email announcements and advertisements to kwajaleinhourglass@vectrus.com Wednesdays by close of business. Ads received after deadline will be published in the next issue of The Kwajalein Hourglass.

ARMY REGULATIONS

TOBACCO USE. USAG-KA Policy Memorandum 600-8 protects others from the negative impact of tobacco use. On USAG-KA, smoking is permitted in designated smoking areas only. Smoking and cigarette butt receptacles must be at least 50 feet from the entrance of facilities.

CANDLES and open flames are not permitted in BQ rooms. The Kwajalein Fire Department thanks you for keeping your neighbors safe.

METAL DETECTORS are not allowed on Kwajalein according to Army Regulation. Unexploded Ordnance exists and could be dangerous if disturbed.

Not allowed on USAG-KA: bow and arrow, air guns, paint ball and other projectile weapons.

CLASSES

ALCOHOLICS ANONYMOUS. Open meetings for this group are Saturdays at 6 p.m. in the REB, Room 213. Contact the Island Memorial Chapel for more information at 5-3505 and at kwajchapel@gmail.com.

BLDG. COORDINATOR TRAINING. This training for building managers is required by AR 420-1. Kwaj training occurs on the first and third Wednesdays of each month at 10 a.m. in the Religious Education Building. Roi-Namur training occurs on the second Wednesday each month at 9:30 a.m. in C-building. Call 5-3364 to register.

FACILITIES

RACQUETBALL COURT CODE. Residents can obtain the door code from the MWR Desk at the Grace Sherwood Library. The code will not be given out over the phone. Contact MWR at 5-3331 with questions.

JOBS

To research and apply for government employment opportunities on U.S. Army Garrison-Kwajalein Atoll and worldwide, visit usajobs.gov. Write to kwajaleinhourglass@vectrus.com to remove your listing.

AKIMA is hiring for the following on-island positions: Communications Clerk (ID: TRU01101); Communications Specialist (ID: TRU01100); and Fiber / Cable Technician (ID: TRU01099). Applicants must currently reside on USAG-KA and possess a valid passport. For more information and a list of required qualifications, visit https://akima.ta-leo.net/careersection/akimallc_cs/jobsearch.ftl. Apply online or send resume to Jeannette McIlwain at jeannette.mcilwain@akima.com.

ADMINISTRATIVE ASSISTANT. This position provides daily administrative task support for operations at the Island Memorial Chapel. For questions or to submit a resume, please call 5-3505. Send to kwajchapel@gmail.com and Ch. Brian Conner at brian_conner@sbcglobal.net.

CALIBRE seeks a Military Material Specialist. For more information, or to apply, visit <https://jobs.silkroad.com>.

[com/calibresys/https://calibresyscareers/silkroad.com/jobs/4013](https://calibresys.com/calibresyscareers/silkroad.com/jobs/4013).

COMMUNITY BANK seeks a banking center service specialist/teller. This is a part-time on-island hire position for 20 hours per week. Submit applications to www.dodcommunitybank.com. Call Camellia Bobo at 5-2292 for more information.

INTERNATIONAL SOS seeks a dental assistant and applicants for administrative positions. Send your resume to marykathleen.bryan@internationalosos.com.

KAIHONUA is hiring for multiple positions. For more information or to apply, please contact Tribalco Human Resources at 5-4344 and visit <https://honuserVICES.jobs.net/page/kaihonua>. Applicants must meet job requirements.

NAN, INC. seeks a project engineer, welder, welding inspector, quality control manager, and site safety and health officer. To apply, visit www.nanhawaii.com and contact Clint Ueatari or Kevin Short at 5-2632, 5-4995 or 5-4996.

QUANTUM DYNAMICS, INC., is accepting resumes for positions on Kwajalein and Roi-Namur in the following areas: vehicle maintenance, transportation motor pool, movement control and custodial. Apply at <https://qdyncorp.com/home/careers/>. Contact Dolly Bakshsh, HR manager, at 5-0782 and dbakshsh@rmi.qdyncorp.com, or Sammy Juda, administrative assistant at 5-4916 and sjuda@rmi.qdyncorp.com. You may also visit the HR Office in Bldg. 700.

RGNEXT, LLC seeks qualified candidates to fill several open positions on Kwaj and Roi in engineering, technical, COMSEC and other areas. For information and to apply, go to www.rgnext.com.

SUBSTITUTE TEACHERS. Kwajalein School System is hiring part-time substitute teachers. These are part-time on-island hire positions with no guaranteed hours. Minimum requirements include a four-year degree, love of working with children in grades K – 12 and confidentiality. A teaching certificate is preferred. A CNACI background check must be completed after receiving a job offer. Apply at Careers.Vectrus.com, search for "substitute teacher," or, send resume and letter of application to uhrenp@kwajalein-school.com.

TRUESTONE is hiring for multiple positions. Contact Tribalco Human Resources at 5-4344 and visit <https://www.akima.com/careers/>. Visit www.tribalco.com/careers.html.

MEAL CARD HOLDERS

If you are isolating due to a positive COVID test result, do the following to receive meals from Zamperini Dining Facility using your meal card with the help of a designated caretaker:

- 1) Provide proof of your positive COVID test result to International SOS and their corresponding human resources representative with:
 - Name
 - Meal card number
 - BQ or Facility Name/Number
 - Room number
 - Local phone (not cellphone, WhatsApp, Teams, etc.)

2) HR's must supply the above information to clint.weaver@vectrus.com to ensure the isolated individual's information is added to the list. Listings are updated daily.

3) Caretaker(s) who will be picking up the meal(s) for the isolated individual must have the meal card number for the isolated individual and their own K-badge in order to sign in at the Zamperini Dining Facility.

4) It is the responsibility of the caretaker to deliver the meal to the isolated individual.

NOTICES

SCHOOL ADVISORY COMMITTEE meets Wednesday, September 21 at 6 p.m. in the George Seitz Elementary School Coconut Room. Meetings are open to the public.

THE COUNTRY CLUB AND GOLF COURSE ARE CLOSED. Until further notice, the Kwajalein Country Club & Golf Course are closed from 6 p.m. to 6 a.m. during the road closure. Your continued patience is appreciated.

LEGAL COUNSEL. USAG-KA Attorney Ben Clancy is on travel leave. For notary services, contact Attorney Dr. David Creed at david.m.creed.civ@army.mil for an appointment. USAG-KA Legal is not able to provide real estate closing services or estate planning services—only Powers of Attorney.

ISLAND ORIENTATION and Newcomer's Briefings take place in the Religious Education Building behind the Island Memorial Chapel. Email KWAJ_OSO_Ops@Vectrus.com or call 5-3511 to register.

ARMA. Log in to ArMa, the Army Maintenance Application, to report issues for all buildings maintained by the Department of Public Works. For more information, please contact DPW at 5-3550.



**Sgt. 1st Class Effie Banks
SHARP Victim Advocate**

Work: 805-355-0660

or 805-355-1419

USAG-KA SHARP Pager:

805-355-3241 #0100

DOD SAFE Helpline:

877-995-5247



SHARP
SEXUAL HARASSMENT/ASSAULT RESPONSE & PREVENTION

**CONTACT THE USAG-KA SEXUAL HARASSMENT/ ASSAULT
RESPONSE AND PREVENTION VICTIM ADVOCATE**

POSTAL CARETAKER

You can designate a postal caretaker to retrieve your packages and mail from the post office when you are not able to do so. Island residents may opt to assign a caretaker when planning vacation, while self-isolating after exposure to COVID-19 or a positive COVID-19 test, and while recovering from an injury.

Please contact our office for questions or assistance at 5-2137.

We the People
June 8, 1789

Express Mail Your Vote & Track

- Bring your Absentee Ballot to your local APO**
- Your APO clerk will affix the Label 11-DoD**
- Retain your tracking number**
- GO ONLINE TO
WWW.USPS.COM
TO TRACK YOUR
VOTE**

POSTMASTER: RETURN TO: SGT BUNNY BUGGS, P.O. BOX 4967, APO AE 09506

ELECTION MAIL

OFFICIAL ABSENTEE BALLOTING MATERIAL - FIRST CLASS MAIL

NO POSTAGE NECESSARY IF MAILED IN THE UNITED STATES

LOCAL ELECTION OFFICE
ANYTOWN, ST 98765

UNITED STATES POSTAL SERVICE
FIRST CLASS PERMIT NO. 1000
ANYTOWN, ST 98765

EXPRESS MAIL REGISTERED MAIL™
Guaranteed Next Day Delivery
Guaranteed Signature Confirmation

WARRANT OF SIGNATURE

Insured by First Class Mail

EM 123 456 789 US

OFFICIAL ABSENTEE BALLOTING MATERIAL - FIRST CLASS MAIL

NO POSTAGE NECESSARY IF MAILED IN THE UNITED STATES

TO: PERSONAL CLERK

PO BOX 123456

OFF 123456 789 123456 789

Instructions:
1. Peel label. Align white center line to top of envelope.
2. Fold remaining label over envelope. Bar code to front.

3. Tear tab at perforation.
4. Keep tab for your records.

Retain For Your Records

EM 123 456 789 US

Retain For Your Record

EM 123 456 789 US

For tracking visit us at usps.com

APO/FPO	AA/AE/AP	ZIP Code	GEO LOCATION	MAILING DAYS PRIOR TO 8 NOV 22	2022 RECOMMENDED MAILING DATE
APO	AP	96555	MARSHALL IS	8	27 Oct 22
APO	AP	96557	MARSHALL IS	8	27 Oct 22
APO	AP	96502	THAILAND	8	27 Oct 22

Perimeter Road Closed
For Airfield - Road Construction
September 1 - October 15
6 P.M. - 4 A.M.



The map shows an aerial view of the airfield perimeter road. A red line indicates the closed road, which runs along the coastline and through the airfield area. Three yellow boxes with a red 'X' mark indicate the closed road segments. The text 'ROAD CLOSED' is written in each box. The map also shows the airfield runways, taxiways, and surrounding infrastructure, including buildings and parking lots. The coastline is visible on the right side of the map, with waves breaking against the shore.

BE SAFE ON KWAJALEIN

To report any emergency, dial 911

- Be aware of your surroundings and report suspicious behavior to the Provost Marshal's Office at 5/4445 or 5/4449.
- Lock the doors to your quarters and secure your windows.
- Do not travel alone. Have a buddy when you walk at night.
- Look out for your fellow island residents.
- Avoid low-lit areas of the island.

KWAJ- EBEYE - FERRY SCHEDULE
Effective August 08, 2022

EBEYE - TUESDAY TO SATURDAY					EBEYE - SUNDAY & HOLIDAY				
ETD KWAJ	ETA EBEYE	ETD EBEYE	ETA KWAJ	TYPE VESSEL	ETD KWAJ	ETA EBEYE	ETD EBEYE	ETA KWAJ	TYPE VESSEL
0245	0310	0315	0340	FB N/1	0400	0425	0430	0455	FB N/1
0420	0445	0450	0515	FB 1	0500	0525	0530	0555	FB 1
0450	0515	0520	0545	FB 2	0600	0625	0630	0655	FB 1
0520	0545	0550	0615	FB 1	0830	0855	0900	0925	FB 1
0550	0615	0620	0645	FB 2	1140	1205	1210	1235	FB 1
0620	0645	0650	0715	FB 1	1530	1555	1600	1625	FB 1/N
0650	0715	0720	0745	FB 2	1700	1725	1730	1755	FB N
0720	0745	0750	0815	FB 1	2000	2025	2030	2055	FB N
					2200	2225	2230	2255	FB N
1140	1205	1210	1235	FB 2/A	Holidays	Only	Add	Extra	Run Below
					1830	1855	1900	1925	FB N
1440	1505	1510	1535	FB A	MONDAY				
1600	1625	1630	1655	FB A	0315	0340	0345	0410	FB N/1
1700	1725	1730	1755	FB A	0500	0525	0530	0555	FB 1
1730	1755	1800	1825	FB N	0600	0625	0630	0655	FB 1
1800	1825	1830	1855	FB A	0720	0745	0750	0815	FB 1
1830	1855	1900	1925	FB N	0830	0855	0900	0925	FB 1
1900	1925	1930	1955	FB A	1140	1205	1210	1235	FB 1
2000	2025	2030	2055	FB N	1440	1505	1510	1535	FB 1/N
2130	2155	2200	2225	FB N	1645	1710	1715	1740	FB N
Saturday	Only	NO	2130 run	2200 run only	1745	1810	1815	1840	FB N
2200	2225	2230	2255	FB N	1900	1925	1930	1955	FB N
					2000	2025	2030	2055	FB N
	FB =	Ferry	Boat		2130	2155	2200	2225	FB N

RTS WEATHER STATION STAFF

WEATHER DISCUSSION

Low pressure systems over the northwest Pacific will keep the subtropical ridge weak and result in light to gentle winds over Kwajalein for the next several days--a pattern more typical for this time of year.

Southerly winds on Saturday should gradually back over the weekend to easterly by later this Monday, while periods of near-doldrum conditions are possible.

After a potentially wet morning on Saturday, shower coverage should be generally isolated through the weekend.

SATURDAY

Mostly cloudy becoming partly to mostly sunny with

scattered showers and a stray thunderstorm A.M., decreasing to isolated evening showers.

Winds S at 5-10 knots, possibly calm at times, with higher gusts near showers.

SUNDAY AND MONDAY

Partly to mostly sunny with isolated showers. Winds at 3-8 knots from the SE-S Sunday, and E-SE Monday.

Winds possibly calm at times, with higher gusts near showers.

NEXT WEEK'S OUTLOOK

Light to gentle winds, possibly calm at times, continue into mid-week.

Occasional weak disturbances passing through the RMI bring slightly better chances for significant rainfall accumulations.

SUN-MOON-TIDES				
	SUNRISE SUNSET	MOONRISE MOONSET	HIGH TIDE	LOW TIDE
SUNDAY	6:40 a.m. 6:53 p.m.	7:38 p.m. 7:06 a.m.	4:40 a.m. 4.9' 5:01 p.m. 4.3'	10:56 a.m. -1.0' 11:01 p.m. -0.9'
MONDAY	6:40 a.m. 6:52 p.m.	8:20 p.m. 7:58 a.m.	5:12 a.m. 4.7' 5:31 p.m. 4.4'	11:24 a.m. -0.9' 11:35 p.m. -0.8'
TUESDAY	6:39 a.m. 6:51 p.m.	9:02 p.m. 8:49 a.m.	5:43 a.m. 4.4' 6:00 p.m. 4.3'	11:51 a.m. -0.7' -----
WEDNESDAY	6:39 a.m. 6:51 p.m.	9:45 p.m. 9:39 a.m.	6:11 a.m. 4.0' 6:28 p.m. 4.0'	12:08 a.m. -0.5' 12:16 p.m. -0.4'
THURSDAY	6:39 a.m. 6:50 p.m.	10:29 p.m. 10:29 a.m.	6:38 a.m. 3.5' 6:56 p.m. 3.7'	12:40 a.m. -0.2' 12:39 p.m. -0.1'
FRIDAY	6:39 a.m. 6:50 p.m.	11:15 p.m. 11:20 a.m.	7:03 a.m. 2.9' 7:24 p.m. 3.3'	1:12 a.m. 0.3' 1:00 p.m. 0.3'
SEPTEMBER 17	6:39 a.m. 6:49 p.m.	----- 12:11 p.m.	7:28 a.m. 2.4' 7:56 p.m. 2.9'	1:48 a.m. 0.7' 1:20 p.m. 0.7'



Work and play safely.

For additional weather information, please click the logo to visit the RTS Weather Station online.

CALLING ALL PLANT LOVERS

PLEASE DONATE YOUR PLANTS!

THE YYWC WANTS YOU TO START PREPARING PLANTS FOR THE OCT FALL FUNDRAISER

ALL PROCEEDS FROM DONATED PLANTS BENEFIT THE YYWC EDUCATION ASSISTANCE FUND

EMAIL YYWCINFO@GMAIL.COM OR FIND JULIE MAKOVEC ON FACEBOOK

FROM THE GARRISON COMMAND SERGEANT MAJOR

Do your part as a Kwajalein resident.

- How can you improve your workspace or workplace?
- Is the outside of your facility clear of rubbish or do you need to get rid of unwanted trash?
- Stop parking in no parking areas/park only in designated areas.
- Use recycle bins located outside your facility properly.



UNITED AIRLINES FLIGHTS THROUGH OCTOBER

Monday
UA155 (HNL)
Check-in: 3:15 – 4:30 p.m.

Tuesday
UA154 (GUM)
Check-in: 10:45 – 11:15 a.m.



USAG-KA is starting back up the Yard of the Month program for all residents of Kwajalein Army Family Housing.

The Kwajalein Housing Office will choose three island quarters for consideration. One lucky winner will take the prize.

Prizes could include a free MWR cart rental, pizza from the Sunrise Bakery, or a game of bowling.



TEMPORARY ROAD CLOSURE

The oceanside perimeter road will close to pedestrian, bicycle and vehicle traffic 20 minutes prior to heavy aircraft arrivals and departures.

Contact Airfield Operations at 5-2131 with any questions.

HOW TO MAKE COMMON ACCESS CARD APPOINTMENTS

Common Access Card Office visits are scheduled by appointment only. To get an appointment at the CAC office:

1. Go to website: <https://idco.dmdc.osd.mil/idco/>
2. Enter 'Kwajalein' as the site location
3. Click 'Select' to the right of the map
4. Schedule appointment using calendar

USAG-KA CAC Office, Bldg. 835
Hours of Operation
Tues-Sat: 8 a.m. – 4 p.m.
(Lunch 12 – 1 p.m.)

- Ensure all paperwork is completed by your HR BEFORE making an appointment.
- Bring two forms of government-issued ID's with you to your appointment.
- Appointments cannot be made on a NIPR computer.

Questions? Call the CAC Office at 5-8496.

*Walk-Ins and/or call-In appointments are not accepted. Lockouts and emergency CAC issues are an exception.

Why the additional HPCON measures?

USAG-KA is fortunate to have zero hospitalizations despite **372** cases of COVID over the last **4 weeks**.

Restrictions are implemented to control the spread of COVID in order to not overwhelm medical capacity, impact mission or the delivery of critical services, and keep everyone as safe and healthy as possible.

Understand that current restrictions are **TEMPORARY!**

We will repeal these HPCON restrictions and restore services when case-rate reduces over the next few weeks.



Together we can #KWashTheBug!

Sunrise Bakery



Now Offering Breakfast Biscuits



Tuesday – Saturday, 7 – 9 a.m.



DRIVER'S TRAINING & LICENSING PROGRAM

Kwajalein Classes

Wednesday Only

9 – 11 a.m.; 1 – 3 p.m.

Automotive Area

Bldg. 856, Rm. 103

Roi-Namur Classes

2nd Saturday of the month

9 – 11 a.m.; 1 – 3 p.m.

C-building

Call 5-3291 to register. Class size is limited. An automated scheduling tool is coming soon!

Note: Please bring a valid U.S., international, or Marshall Islands license with you to class

THE KWAJALEIN HOURGLASS

SHARING STORIES FROM THE MISSION.



The shoulder sleeve insignia of the 7th Infantry Division consists of two black, equilateral triangles placed vertically on a red circular disc giving it an hourglass shape. The hourglass of the insignia was consequently used in the title of the island newspaper, The Kwajalein Hourglass.


Be Part of The Hourglass Story
Send announcements, community updates and event fliers to kwajalein-hourglass@vectrus.com Wednesdays by 5 p.m.

USAG Kwajalein
<https://home.army.mil/kwajalein/index.php>

USAG-KA Garrison Facebook
<https://www.facebook.com/USArmyKwajaleinAtoll/>

U.S. Space and Missile Command
<https://www.smdc.army.mil/>

Left: Roi-Namur Tammy McDermott races storm clouds around a perimeter road in May 2021.

 U.S. ARMY PHOTO BY JESSICA DAMBRUCH