

THE KWAJALEIN HOURGLASS



THIS WEEK

COVID SECURITY
WITH CHENEGA SECURITY 3

SCHOOL WORKS
NEW REFURBISHMENTS 4

ISLAND TERN
IS FLYING FREE 6

RANGE OPERATION
SAFETY INFORMATION 2

A YOUNG, FLIGHTLESS WHITE TERN HUNKERS DOWN TO WAIT FOR A PARENT TO BRING FOOD EARLIER THIS SPRING.

 JESSICA DAMBRUCH

RONALD REAGAN BALLISTIC MISSILE DEFENSE TEST SITE RANGE OPERATION ANNOUNCEMENT

A RANGE OPERATION IS SCHEDULED FOR SEPT. 7 - 8, 2022. CAUTION TIMES ARE WEDNESDAY SEPTEMBER 7 at 7 P.M. THROUGH 2:11 AM ON SEPTEMBER 8. THE BACKUP DAY OF SEPTEMBER 8 HAS THE SAME CAUTION TIMES. DURING THIS TIME, A CAUTION AREA WILL EXTEND INTO THE OPEN OCEAN EAST OF THE MID-ATOLL CORRIDOR.

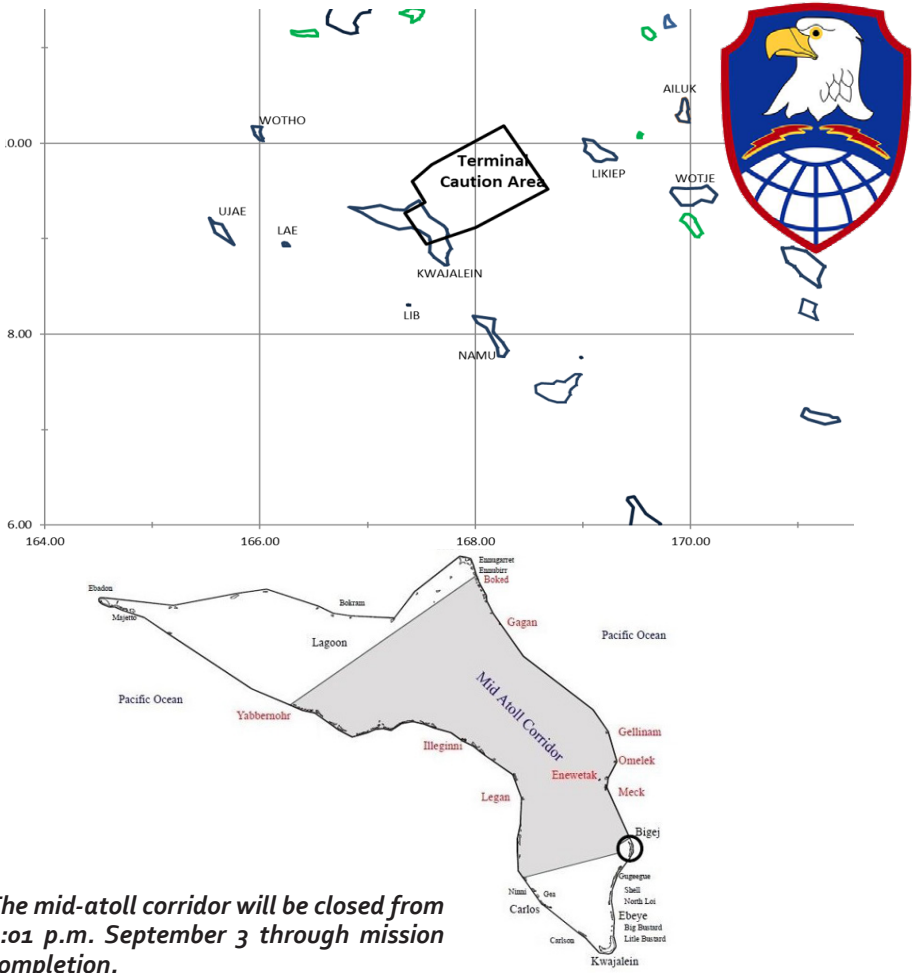
THE MID-ATOLL CORRIDOR WILL BE CLOSED FROM 4:01 P.M. SEPTEMBER 3 THROUGH MISSION COMPLETION. THE CAUTION AREA EXTENDS FROM THE SURFACE TO UNLIMITED ALTITUDE.

SEE THE HOURGLASS OR ROLLER DATED AUGUST 27 AND SEPTEMBER 3 FOR A MAP OF THE CLOSED AREAS. QUESTIONS SHOULD BE DIRECTED TO REAGAN TEST SITE (RTS) MISSION SAFETY OFFICE AT (805) 355-4841 or MISSION SUPPORT AT (805)355-4420/2170.

JUON IEN KOKEMELMEL ENAJ KOMAN ILO RAN IN WEDNESDAY, 07 RAN LOK NAN 08 RAN IN SEP 2022. AWA KO REKAUWOTOTA EJ JEN 7 P.M. AWA JOTA LOK NAN 02:11 AM IN JIMAROK. RAN IN BACKUP EJ 08 RAN LOK NAN 09 RAN IN SEP 2022, IM AWA KO REKAUWOTATA EJ JEN 7 P.M. JOTA NAN 02:11 A.M. IN JIMAROK.

MALO IM ENE KO ILO IOLAP IN AELON IN (MID-ATOLL CORRIDOR) RENAJ KILOK JEN 4:01 P.M. AWA ELKIN RAELEP ILO 03 RAN IN SEPTEMBER 2022 NAN NE EDEDELOK KOKEMELMEL KEIN.

LALE HOURGLASS AK ROLLER EO AN 27AUG IM 03 SEP NAN AM LALE IA KO REJ KILOK. NE EWOR AM KAJITOK JOUJ IM CALL E LOK KWAJALEIN RANGE SAFETY OPIJA RO ILO (805) 355-4841 AK MISSION SUPPORT ILO (805) 355-4420/2170.



The mid-atoll corridor will be closed from 4:01 p.m. September 3 through mission completion.



NAMU COMMUNITY OUTREACH

Your help is needed to provide charitable support for the children and families of Namu Atoll. Donations accepted now through Oct. 7.

Draw a name for one of the 121 children chosen to participate in this program at the RMI Liaison Office in downtown Kwajalein.

Donations of school supplies, book bags, clothing, undergarments, sports equipment (soccer/basketballs) and toys are welcome. Please donate any gently used household goods for families.

Donations must be received no later than Oct. 7 at the RMI office for delivery on Oct. 10 to Namu.

Volunteers are needed. Contact Chief Warrant Officer 3 Michael Schafer at 5-3421 or Kalani Riklon at 5-3600 for more information.

THE KWAJALEIN HOURGLASS

The Kwajalein Hourglass is named for the insignia of the U.S. Army's 7th Infantry Division, which liberated the island from the forces of Imperial Japan on Feb. 4, 1944. The Kwajalein Hourglass is an authorized publication for military personnel, federal employees, contractor workers and their families assigned to U.S. Army Garrison-Kwajalein Atoll.

Contents of the Hourglass are not necessarily official views of, or endorsed by, the U.S. Government, Department of Defense, Department of the Army or US-AG-KA. It is published Saturdays in accordance with Army Regulation 360-1. Phone: Defense Switching Network 254-5169 Local phone: 5-5169

Garrison Commander.....Col. Thomas Pugsley
Garrison CSM.....Command Sgt. Maj. Ismael Ortega
Public Affairs Officer.....Mike Brantley
Editor.....Jessica "JD" Dambruch

QUESTION AND ANSWERS WITH CHENEGA SECURITY

BY JESSICA DAMBRUCH

COVID or not, each day, personnel from Chenega Global Protection work to maintain safe and secure entry and exit points around U.S. Army Garrison-Kwajalein Atoll.

Chenega officers assist with everything from the 24-hour Central Patrol Station non-emergency line to maintaining a constant security presence around Kwajalein.

Among the myriad tasks they perform each day, passenger services are a top priority. Each weekday, security personnel assist the more than 1,000 commuters who transit from Ebeye to Kwajalein for work.

The island's contract security service has continued to support USAG-KA's "Live Safe, Work Safe" program and changing health protection condition levels.

To learn more about daily operations, The Kwajalein Hourglass reached out to Chief Chris Ramsey and Dock Security Checkpoint Lt. Larry Bowman.

"In our work areas, Chene-ga is enforcing six-foot social distancing, masks, and workplace capacity," said Ramsey.

"We are "navigating through the waters" at a different pace every day."

The current health protection condition level has had a temporary impact on daily commuting to and from Ebeye. Masks and social distancing are still required for all essential personnel commuting to and from Kwajalein by ferry," said Bowman.

The main sponsorship program for Ebeye visitors to Kwajalein remains temporarily closed by USAG-KA due to health and safety concerns related to the pandemic.

"A few entry programs remain open with strict guidelines, and all must adhere to security personnel as they pass through the DSC," added Bowman. "As far as other DSC-related services, the American Eatery remains open for take-out orders."

To assist in social distancing, it is recommended non-essential personnel refrain from visiting the DSC, and that customers at the American Eatery refrain from loitering in the DSC area after food has been delivered, Bowman said.

Chenega is one of the island's largest employers

of Marshallese citizens. As COVID has spread through the Ebeye community, it has impacted the Chenega team as well. The team coordinated its staffing efforts to allow for the best possible outcome.

“Most of our personnel from the local work force have been out with COVID,” Bowman said. “We added more employees to continue to support the USAG-KA mission, and we continue to do so.”

"I wanted to remain fully mission capable, so we reduced staffing in some areas and revised work schedules," said Ramsey. "Most schedules then allowed for one team to stay safe and ready to relieve others. This allowed anyone COVID-positive to recover and return to work. At one time, more than one half of my workforce was out with COVID, and we still performed at a FMC level. Kudos to my team for all their efforts and hard work. We aren't out of the water yet; however, the recovery and return to work time was remarkable."

Chenega Entry and Exit personnel are also supporting USAG-KA Command's current restriction of movement protocol for Air Marshall Islands passengers. To minimize the potential for increased community spread of COVID-19, arriving AMI passengers are escorted from the AMI terminal and the DSC.

"When at the DSC, we have a designated area for the passengers to sit and wait comfortably indoors," said Ramsey. "We also provide bottled water upon request until the boat departs for Ebeve.

Prior to work on USAG-KA, Ramsey worked with Chenega in Japan. He said he is impressed with Kwajalein's recovery.

“Kwajalein, in my opinion, has learned lessons from the past and recovered remarkably well—and at a pace I never saw in Japan,” said Ramsey. “Perhaps it’s the discipline of the residents here and on Roi-Namur, or guidance given out by the Garrison with those lessons learned. I honestly didn’t expect us to go from A to C+ and back down so rapidly, here. It is super impressive.”

Chenega looks forward to leaving the challenges of COVID behind and moving forward together. Ramsey summed up the experience for his team: "One team, one fight."

MEAL CARD HOLDERS IN ISOLATION

If you are isolating due to a positive COVID test result, do the following to receive meals from Zamperini Dining Facility using your meal card with the help of a designated caretaker:

- 1) Provide proof of your positive COVID test result to International SOS and their corresponding human resources representative with:
 - Name
 - Meal card number
 - BQ or Facility Name/Number
 - Room number
 - Local telephone number (not cellular, WhatsApp, Teams, etc.)
- 2) HR's, not individuals, must supply the above information to clint.weaver@vectrus.com to ensure the isolated individual's information is added to the list. The listing will be updated at the COB each day and routed to Food Services personnel for the following day. Please understand this will be done once a day, so there will likely be gaps in meal service.
- 3) Caretaker(s) who will be picking up the meal(s) for the isolated individual must have the meal card number for the isolated individual and their own K-badge in order to sign in at the Zamperini Dining Facility.
- 4) It is the responsibility of the caretaker to deliver the meal to the isolated individual.

For those self-isolating, Assign Post Office Caretaker

You can designate a postal caretaker to retrieve your packages and mail from the post office when you are not able to do so. Island residents may opt to assign a caretaker when planning vacation, while self-isolating after exposure to COVID-19 or a positive COVID-19 test, and while recovering from an injury.

Email your caretaker request to von.jenkins@vctrus.com and isaac.larios@vctrus.com.

We the People
June 8, 1789

Express Mail Your Vote & Track

1 Bring your Absentee Ballot to your local APO

2 Your APO clerk will affix the Label 11-DoD

3 Retain your tracking number

4

**GO ONLINE TO
WWW.USPS.COM
TO TRACK YOUR
VOTE**

APO/FPO	AA/AE/AP	ZIP Code	GEO LOCATION	MAILING DAYS PRIOR TO 8 NOV 22	2022 RECOMMENDED MAILING DATE
APO	AP	96555	MARSHALL IS	8	27 Oct 22
APO	AP	96557	MARSHALL IS	8	27 Oct 22
APO	AP	96502	THAILAND	8	27 Oct 22



U.S. ARMY PHOTO BY JESSICA DAMBRUCH

SCHOOL SPIRIT

KWAJALEIN HIGH SCHOOL REFURBISHED

BY JESSICA DAMBRUCH

Not even the pandemic could stop progress on LOGCAP refurbishments projects for the Kwajalein School System.

Beginning this year, high school students enrolled in Family and Consumer Science classes, formerly Home Economics, will learn in a modernized culinary environment, thanks to some hard work by logistics personnel.

Traditional seating and an assortment of new workstations, cabinet systems and electric ranges are augmented by kitchen islands, teacher demo areas and modernized appliances. Standing coolers, new stoves and ventilation systems are also installed and ready for classes.

DPW personnel also added a fresh coat of paint and new flooring to the FCS classroom.

The much-needed update was completed just before the beginning of the school year and has been in progress for more than two years.

Work on the FCS classroom follows a long-term renovation for one high school science classroom and the entire high school library, in 2020. A second science lab was completed this year.

A distinctive new paint job is showcased is the Kwajalein High School Davye Davis Multi-purpose Room, where bold stripes of white and navy blue offer a fresh accent to the historic space. As part of an ongoing improvements plan, both KHS George Seitz Elementary School received a full exterior paint job as well as significant interior painting to touch-up school walls.

LOGCAP V Operations Manager Jan Potter thanks the many DPW supervisors and personnel who have contributed to the project over the years, with expertise contributed by electricians, plumbers, painters and carpenters, among others. Potter, who has seen the project from start to finish, completed ordering for all the materials utilized with MB Taylor, former Community Activities director for

Kwajalein under LOGCAP IV, in 2019.

As the project spanned years and a base operations services contract transition, Potter has provided the long-term momentum to see the project fully realized. To date, all materials purchased for the project are installed per the intended refurbishment plan.

“To me, the best part is for students to actually use something modern that looks fresh, with new flooring, cabinets and appliances,” Potter said. “It shows them that the community cares about their learning environment.”

The MP Room served as a critical staging area for the thousands of pounds of equipment utilized in the refurbishment project, said Potter. This summer, it’s spacious size and paint job also made it an attractive location for an historic meeting: the first round of renewal talks in June for the Compact of Free Association.

To accommodate the summit, the school refurbishment project was placed on hold for a full week. Crews removed all hardware, supplies and materials prepare the MP Room for the first meeting between the delegations from the United States and Marshall Islands. Despite the change of timeline, logistics teams completed their last installations in time for the first day of school on Aug. 10, Potter said.

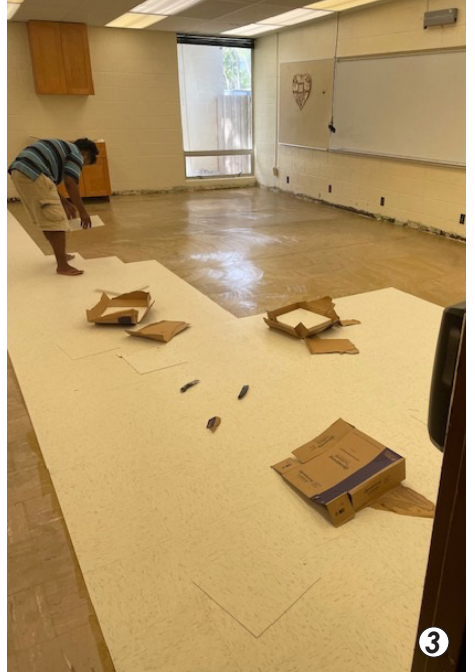
So far, the high school students and staff are enjoying their new environs. Just this week, FCS students tried out their new stoves with a lunchtime pizza-making project.

“Kwajalein Junior Senior High School has a long legacy of Home Economics, now renamed Family and Consumer Science education,” said KHS teacher and FCS instructor Sarah Scott. “We are proud to continue to offer classes that allow students to create and learn valuable life skills. The kitchen renovation has brought updates for the students to be able to learn culinary and design skills on more up-to-date equipment. A fresh and bright new look was a great way for us to start the year together.”



COURTESY PHOTOS BY JAN POTTER

1) The completed Multi-purpose Room at Kwajalein High School was the site for the renewal talks for the Compact of Free Association this past June. The room received a new paint job as part of the high school’s refurbishment plan. 2-4) Steps in the MP Room refurbishment process, including pallets of equipment and supplies needed for the large-scale project.



Special thanks to all the hardworking personnel who have worked to conduct a complete refurbishment at the Kwajalein High School campus. Numerous new desks, hardware, fixtures and appliances were installed at the freshly-painted school in time for the first day of classes this year. The refurbishment took thousands of hours, and the efforts of the island's electrical, plumbing and carpentry repair shops. 1) The former Home Economics classroom at Kwajalein High School was transformed into the present day Family and Consumer Science classroom. The facility features new appliances, flooring and hardware for students to use to learn in a fully modernized learning environment. 2-5) Steps in the transformation 6) brand new cabinet systems, counter tops and sinks are ready for students to use during the current school year.



U.S. ARMY PHOTOS BY JESSICA DAMBRUCH

AWAIT YOUR TERN: THE STORY OF AN ISLAND BIRD

FEATURE / JESSICA DAMBRUCH

The white tern had laid her single egg in an old Kwajalein tree. Her fledgling was barely visible as it surveyed the world from the safety of its mother's feathers. Before long, the two tiny black eyes and small fluff of gray down nestled in the delicate crook formed by low-hanging branches would soar.

The little newcomer gripped its bare branch with tiny, sharp talons. Its parents delivered small fish. A veritable feather-weight, it addressed the sky and the occasional passerby with a high-pitched call as its feathers began to change from gray to white.

I have rarely seen a young tern up close, so I decided to photograph it. The following day, I took my camera outdoors, ready for almost anything. To my surprise, both the tree and the bird were gone.

How the little island underdog, or “underbird,” with no tree managed to make its way to the island's treetops is a good Kwaj story. It involves our community coming together to give a small creature a better chance. It is also a story that makes more sense once you learn a thing or two about Kwajalein's terns.

**

White terns are often sighted on Kwajalein Atoll and throughout the Pacific region. They are protected in Hawaii, where they are counted and tracked across the islands. In the past two decades, New Zealand has made strong efforts to increase its tern population after facing reductions caused by predatory rats and cats. Under the Migratory Bird Treaty Act, it is illegal to capture, kill or hunt white terns. Those who do are subject to fines of up to \$15,000, according to whiteterns.org.

Those unfamiliar with the habits of the white tern, may find it peculiar that terns do not always build nests for their eggs. Often, they lay eggs in low trees with branches short enough to balance their brood. In the Marshall Islands, terns also nest on the ground or on a convenient rock. Not relying on a nest means fewer pesky parasites with which to contend.

Keep an eye out for nearby terns. Once a bird establishes a habitat, the family is likely to come back. Each spring, tern parents wait for 35 days for their single egg to hatch, and approximately 45 days for the little one to be able to fly while they take turns providing small fish for meals.

Young terns may be fluffy, but they pop out of their shells ready to grip branches to anchor themselves to home.

Over many weeks, the soft, baby down feather is replaced by the sleek, white feathers of a mature bird. As their flight radius and strength increases, terns travel farther afield.

Terns are long-lived birds, sometimes growing older than 40 years. They are graceful fishermen who can travel for more than 100 miles in a day. For ancient navigators, they were a hopeful sign. The presence of the small white birds with the loud, raspy call meant that land was near, and the journey was nearly over.

White terns are treasured by mariners, ornithologists and complete amateurs like me, an admitted former cat owner. Anyone can dig into tern truths with resources available from Hawaii-based conservation group Hui Manu-o-Kū. Dedicated to the study and protection of terns through collaboration with like-minded groups such as the U.S. Fish and Wildlife Service and

the Hawaii Department of Land and Natural Resources, the group's namesake is derived from the Hawaiian name for the white tern: “manu-o-Kū,” or “Bird of Kū,” the feathered Hawaiian god of war.

I enjoy watching Kwaj terns hover in the breeze and feel fortunate whenever I glimpse a fledgling. Many don't survive.

“We have a bird in our tree,” a friend had told me the year before.

It was a different egg, in a different tree, outside of the Sands BQ. We went outside to look at it.

“They say that it's supposed to be good luck to have a bird in your tree,” she said. “Lots of money!”

We had laughed, then, about the money.

The next day there was a fierce windstorm. Only eggshells remained: disaster.

**

I stared down at the stump and wondered where the tree and its bird had gone.

Sometimes Kwaj trees go missing when they become safety hazards to homes or island residents.

I had suspected this gnarled tree might be dead. Thin soil had retreated from its roots and left them clawing at the empty air. The leaves had long since withered. There was no sign of the bird family I'd spied in its branches.

“The bird is still there,” said former Kwaj resident Dave Dethlefsen one afternoon, during a softball game.

This bird had made it back up onto the stump and wedged its gray body just out of my sight. It appeared uninjured. Perhaps it could reconnect with its family.

This past March, Heather St. Peter, Kwajalein's veterinary technician, shared tips for understanding the is-

land’s wild birds. Her advice is sound:
“If you find a fledgling—a young, fully feathered bird—outside the nest, leave it alone,” she said. “While it is spending some time hopping around on the ground learning how to fly, the parents are usually nearby still taking care of it. Should you find a fledgling near a road or exposed to danger, it can be moved to a safer, sheltered location nearby. Young birds naturally have lower survival rates, which keeps populations in balance with available resources.”

It is hard to do nothing for such a small bird, but it proved itself resilient. Weeks went by. The bird’s parents did return often with fish, and it grew bigger, and stronger. As the sun traveled, the bird circumnavigated the stump to find new places to try to take cover. When heavy spring rains deluged the roads, the bird toughed it out, face pointed up into the water. After each storm had passed, it stretched up to its full height, fluffed out its feathers and recovered.

The bird had no proper tree, but it did have a growing fan base. More than a few island residents spotted the bird’s “hideout.” They became fascinated by terns. It wasn’t uncommon to wander into conversations about Kwaj creatures and their respective do’s and don’ts for the natural world. Some researched tern habits and checked in with the vet tech for an occasional update.

The bird inspired art. A friend who had never paid birds much attention discovered a newfound joy as an amateur birder on fishing trips. He described how white terns and black noddies race along the shoreline. It had reminded him of fighter jets practicing flight patterns. “I recorded them flying, and then I overdubbed dialogue from “Top Gun,” he said.

The bird had a better chance because our community left it alone—except for the safety barriers. We couldn’t help it. Days after the tree had gone missing, someone nailed together a humble perch bearing an aptly scribbled name: “Birb.” Someone erected a band of orange safety fence was around the stump to keep out feral cats.

At the end of each workday, I’d check in on the bird. Then, I’d chase away the curious feral cat. At last, I met the friends who had helped to vector the bird back to the tree stump and away from the island’s busy thoroughfares when it began to wander farther afield.

Surely, with friends like these, “our bird” would make it. The bird’s wings grew stronger, longer and sleeker. It began making short hops and flaps, that turned into circles that grew ever higher.

Then, one day, quite suddenly, the featherweight was an adult bird. Then, it was gone.

Today, the stump with its orange safety perimeter is vacant. The bird family may come back. Right now, they are probably flying somewhere overhead, scanning the horizon for fresh fish with an unparalleled view of the world.

Watch carefully, and you can see th hovering on the breeze.



U.S. ARMY PHOTOS BY JESSICA DAMBRUCH

DEPARTMENT OF THE ARMY
UNITED STATES ARMY GARRISON KWAJALEIN ATOLL
UNIT 17001, Box 1 APO AP 96555

AMIM-KWG-ZA

02 SEP 2022

MEMORANDUM FOR Subordinate Commands, Tenant Units, and All Individuals Located on U.S. Army Garrison Kwajalein Atoll
SUBJECT: U.S. Army Garrison - Kwajalein Atoll (USAG-KA), COVID Work Safe, Live Safe Order #4

PURPOSE. This order seeks to educate the residents and visitors located on USAG-KA and identifies conduct that is prejudicial to good order and discipline, health, and safety of all personnel residing or working on the USAG-KA.

AUTHORITY. 10 U.S.C. Chapter 47 (Uniform Code of Military Justice); Title 18 United States Code 1382; Army Regulation 600-20 Army Command Policy; USAG-KA Policy 8-1, Command Sponsorship, USAG-KA Regulations 190-10, Entry & Exit Control; 190-50, Administrative Bar Actions, and W52P1J-19-F-0398 Contract Technical Exhibit I.

APPLICABILITY. This Order applies to all individuals located on USAG-KA including those subject to military orders, DoD personnel, dependents, contractors, and individuals stationed, and/or attached to units on USAG-KA, whether on or off the installation. This includes units, teams, and organizations rotating through and/or visiting USAG-KA for any reason including but not limited to missions, inspections, and training. For purposes of this memorandum, USAG-KA includes the eleven defense sites of the Kwajalein Atoll, all work and training areas, housing of all kinds, and all infrastructure and locations not specified.

1. USAG-KA is currently at HPCON-B, the following expectations and actions apply:

- 06SEP22: Increase Workplace occupancy from 50% to 75% where adequate social distancing cannot be achieved. Those with individual offices are exempt. Maximize telework where possible, especially for individuals who self-identify as immunocompromised / at high risk for severe disease.
- Mandatory Mask wear in indoor common areas and communal workspaces including schools/CDC/CYS as well as all government-owned or contract-operated vehicles, planes and marine assets.
- Common Area Occupancy is 50% of maximum occupancy. Reduce seated areas in common areas to maintain physical distancing (Zamperini, Food Court, Shopette/PX, Bakery, Ocean View Club, and the Golf Club House).
- DFAC (Zamperini Cafeteria) is sit down or take out for meal card holders, and take-out only for Non-Meal Card Holders. 06SEP22: Non-Meal Card Holders may resume dine-in eating at the DFACs.
- Space-A access and non-essential travel to ROI / Ebeye remains suspended.
- The guest sponsorship program, to include all non-C Badge holders and domestic workers, remains suspended unless an exception is granted (ex: childcare providers) by USAG-KA Host Nations Office.
- Schools remain open. Masks are mandatory for students and teachers.
- Non-essential services (fitness centers, leisure and recreational facilities, beauty/barber shops, clubs, and non-essential retail) will be at < 50% maximum occupancy. Social distancing and mask requirements must be met.
- AAFES Food Court, Bakery, Outrigger, and American Eatery are take-out only.

- Effective Immediately: Social gatherings of 10 or less where social distancing may be maintained are authorized.

- All Community Activities, MWR, social events, and public or private gatherings > 10 personnel are prohibited and/or cancelled. Exemptions will be approved through the USAG-KA MWR office for organizations with approved plans. Religious services, swim team, water aerobics, and MWR soccer are exempt from this restriction and may restart programs immediately. Other programs may request exemptions by providing a social distancing plan.

- Outrigger: Bar Services Remain Closed.

- Ocean View Club: 10SEP22 – May Open with an approved social distancing plan including maximized outdoor seating, no bar seating, and reduced hours, closing at 2200.

2. STATEMENT OF MILITARY PURPOSE AND NECESSITY. The arrival of COVID-19 to the Republic of the Marshall Islands (RMI) requires balance between mitigation measures and maintaining readiness. These measures preserve force readiness, limit the spread of COVID, and the health and welfare of service members, DA civilian employees, contractors, families, and the Marshall Islands.

3. COMPLIANCE WITH LOCAL HEALTH ORDERS. All service members, family members, DA civilians, and contractors, both on and off post, will comply with all applicable provisions of Command authority and respect the laws of the RMI regarding public health orders including local directives regarding the use of authorized facial coverings when outside of one's home. In the event this order imposes a more restrictive requirement than the RMI, the terms of this order shall take precedence over any order issued by the Marshall Islands.

4. VISITATION RESTRICTIONS. The guest sponsorship program is suspended. Childcare workers may request an exception. Social gatherings of 10 or less where social distancing may be maintained are

authorized. "Residence" means the property boundaries of the residential property, including the front and back yards. "Household" is defined as those individuals living in the residence and their immediate family members. "Immediate family members" is defined as those parents, grandparents, siblings, and adult children of household members not living in the residence. Individuals (excluding immediate family members) that do not live within the residence are considered members of a separate household.

5. DINING-IN. Only meal card holders are allowed to dine-in at the Zamperini Dining Facility (DFAC). Non-meal card holders are allowed take-out only. 06SEP22: Non-Meal Card Holders may resume dine-in eating at the DFACs. All other dining facilities are takeout only, including but not limited to the AAFES Food Court, the Bakery, the Outrigger (Roi- Namur), and the American Eatery. Roi Café is open for meal card holders and mission critical commuters, though tenants should be limiting non-essential travel to Roi.

6. RETAIL SHOPPING GUIDANCE. In-person shopping is authorized. Personnel will: (1) maximize the use of COVID mitigation measures; (2) maximize the use of pickup/delivery services; and (3) minimize the number of household members entering such locations. Managers will ensure social distancing and sanitization of high touch areas.

7. ESSENTIAL ACTIVITIES & TRAVEL. For purposes of this order "essential activities or services" includes, but is not limited to the following: official government duties, care of others (including adult and child caregivers). Space-A and non-essential travel to Roi and Ebeye/3rd Island remains suspended. Travel to the Outer Islands and Majuro is restricted by the President of the Marshall Islands.

8. PRIVATE & PUBLIC GATHERINGS, MILITARY CEREMONIES. Effective Immediately: Social gatherings of 10 or less where social distancing may be maintained are authorized.

All Community Activities, MWR, social events, and public or private gatherings > 10 personnel are prohibited and/or

cancelled. Exemptions will be approved through the USAG-KA MWR office for organizations with approved plans. Religious services, swim team, water aerobics, and MWR soccer are exempt from this restriction and may restart programs immediately. Other programs may request exemptions by providing a social distancing plan.

9. UNIT FORMATIONS & PHYSICAL TRAINING. Conduct physical training IAW the current HPCON guidance. Close-order formations for any purpose are NOT authorized. Maintain social distancing and use PPE.

10. PLACE OF DUTY & TELEWORK. All personnel subject to this order will report to their regular place of duty during normal work hours unless authorized telework. Current workplace guidelines allow for 50 percent occupancy, not including workers who have individual offices. 06SEP22: Workplace occupancy will increase to 75%. Tenants are encouraged to maximize telework where feasible. Common spaces (other than common workspaces; EX: Conference rooms) should be at 50 percent of maximum occupancy.

11. DUTY UNIFORM. Personnel are required to wear an authorized face covering while in any duty uniform. While in a federal facility, or performing official duties, personnel including all military, civilian, contractors, and family members are required to wear a professional face covering that complies with applicable CDC guidance. Authorized supervisors may grant exceptions pursuant to mission requirements. This requirement does not apply while driving a cart or bike alone, eating/drinking, or conducting physical training outdoors.

12. MASKS IN FEDERALLY FUNDED TRANSPORTATION. All individuals will wear a mask on DoD aircraft, boats and other maritime conveyances, and buses traveling into, within, or out of the United States, and indoor DoD transportation hubs, regardless of vaccination status and CDC COVID-19 Community Levels. Maintain social distancing and mask wear is optional at outdoor areas of these conveyances (if such outdoor areas exist on the conveyance) or while outdoors at transportation hubs, if these areas are uncrowded. Masking requirements apply whether the DoD aircraft, boats and other maritime conveyances and buses are located inside or outside the United States but exclude these conveyances and other tactical vehicles and craft in their operational environment.

13. ACTIVITIES. All activities (social, recreational, religious, etc.), businesses or facilities available for use on USAG-KA are affected by current HPCON B measures. The Garrison Commander will determine rules governing the operation (including hours and maximum occupancy) of on-post activities, business, or facilities. Special categories of services include schools, CDC, and CYS.

14. INSTALLATION ACCESS. The following access is suspended: the unofficial day guest sponsorship, community exchange sponsorship, all 480s (except those provided exception from the commander), domestic workers program (except those

with ETP from commander, EX: in home childcare), commute list program (Roi-Namur is excluded from these restrictions due to conditions on 3rd Island).

15. PUNITIVE ORDER. Paragraphs 3, 8, 9, 11, and 12, of this order are punitive. Persons subject to the UCMJ who violate this order may be punished according to its provisions or face adverse administrative action. Persons not subject to the UCMJ may face administrative sanctions to include suspension or revocation of privileges and removal from the installation, suspension or termination of access to Government facilities and possible criminal prosecution.

16. INDIVIDUAL AND UNIT COMMANDER RESPONSIBILITY. Individuals subject to this order have the duty to know and understand these prohibitions as well as all applicable provisions of local authority public health orders. Supervisors will ensure their personnel are briefed on the prohibitions and requirements of this order.

17. EFFECTIVE DATE. This order is effective immediately. This order will remain in effect until rescinded by me or superseded by a new order.

Current USAG-KA HPCON level is

B

HPCON B Moderate

Utilize measures from HPCON B with the following modifications:

- Maximize telework where possible, especially for individuals who self-identify as immunocompromised/at high risk for severe disease.
- Mandatory mask wear in indoor common areas/communal workspaces, including schools/CDC/CYS as well as all government-owned or contract-operated vehicles, planes and marine assets.
- Limit occupancy/maintain physical distancing in common areas to 50% of max occupancy. Reduce seated areas in common areas to maintain physical distancing (Zamperini, Food Court, Shoppette/PX, Bakery, Ocean View Club, and the Golf Club House).
- Space-A access and non-essential travel to Roi/Ebeye is suspended.
- Guest sponsorship program is suspended, to include all non-C Badge holders and domestic workers unless an exception (childcare providers) is granted by USAG-KA Host Nations Office.



Current USAG-KA HPCON level is

B

HPCON B Moderate

Utilize measures from HPCON B with the following modifications:

- All Community Activities, MWR, social events, and public or private gatherings > 10 personnel are prohibited and/or canceled. Exemptions approved through the USAG-KA MWR office. Religious services, swim team, water aerobics, and MWR soccer are exempt from this restriction. Other programs may request exemptions by providing a social distancing plan.
- Social gatherings of 10 or less are authorized when social distancing can be maintained.
- Reduce non-essential services (fitness centers, leisure and recreational facilities, beauty/barber shops, clubs, and non-essential retail) to < 50% maximum occupancy. Social distancing and mask requirements must be met.
- **Starting Sept. 6**, Increase workplace occupancy from 50% to 75% where adequate social distancing can be achieved.
- **Starting Sept. 6**, non-meal card holders may resume dine-in eating at the DFACs. Take-out only continues for Food Court, bakery, American eatery, and Outrigger.
- Outrigger bar services will remain closed. **Starting Sept. 10**, the Ocean View Club may reopen with a social distancing plan including maximized outdoor seating, no bar seating, social distanced seating, and closes by 10 p.m.



USAG-KA **HPCON LEVEL B:** MODERATE

Issued Sept. 2, 2022

Utilize measures from HPCON B with the following modifications:

Maximize telework where possible, especially for individuals who self-identify as immunocompromised/at high risk for severe disease.

- Mandatory mask wear in indoor common areas/communal workspaces, including schools/CDC/CYS as well as all government-owned or contract-operated vehicles, planes and marine assets.
- Limit occupancy/maintain physical distancing in common areas to 50% of max occupancy. Reduce seated areas in common areas to maintain physical distancing (Zamperini, Food Court, Shoppette/PX, Bakery, Ocean View Club, and the Golf Club House).
- Space-A access and non-essential travel to Roi/Ebeye is suspended.
- Guest sponsorship program is suspended, to include all non-C Badge holders and domestic workers unless an exception (childcare providers) is granted by USAG-KA Host Nations Office.
- All Community Activities, MWR, social events, and public or private gatherings > 10 personnel are prohibited and/or canceled. Exemptions approved through the USAG-KA MWR office. Religious services, swim team, water aerobics, and MWR soccer are exempt from this restriction. Other programs may request exemptions by providing a social distancing plan.
- Social gatherings of 10 or less are authorized when social distancing can be maintained.
- Reduce non-essential services

(fitness centers, leisure and recreational facilities, beauty/barber shops, clubs, and non-essential retail) to < 50% maximum occupancy. Social distancing and mask requirements must be met.

- **Starting Sept. 6,** Increase workplace occupancy from 50% to 75% where adequate social distancing can be achieved.
- **Starting Sept. 6,** non-meal card holders may resume dine-in eating at the DFACs. Take-out only continues for Food Court, bakery, American eatery, and Outrigger.
- Outrigger bar services will remain closed. Starting Sept. 10, the Ocean View Club may reopen with a social distancing plan including maximized outdoor seating, no bar seating, social distanced seating, and closes by 10 p.m.

Schedule your COVID-19 Vaccine.

Contact Sean Holbrook at 5-2223
or email sean.holbrook@internationalsosgs.us

WHAT TO DO IF YOU GET COVID-19 ON KWAJALEIN Kwajalein Hospital COVID-19 Hotline: 5-1103

All persons with symptoms must be tested, either at home with a home test or at the Kwajalein Hospital.

All positive results must be called in to the COVID-19 Hotline, during working hours at 5-1103.

Employees should also notify their respective human resources departments.

Free COVID-19 test kits are available online at www.COVID19.gov/tests. On Kwajalein, the community will utilize the Test and Treat approach as outlined by the Centers for Disease Control and Prevention.

If you have any symptoms (fever or chills; cough, shortness of breath or difficulty breathing; fatigue; muscle or body aches; headaches; new loss of taste or smell; a sore throat; congestion or a runny nose; nausea, vomiting or diarrhea) isolate yourself, correctly wear a mask over your mouth and nose, and get tested.

- Please call the COVID-19 Hotline at 5-1103 before visiting the hospital.
- If you are experiencing a medical emergency, call 911.
- Drink plenty of fluids and manage your symptoms with Acetamino-

phen (Tylenol), Ibuprofen (Motrin/Advil) and/or over the counter cough remedies and decongestants.

- Utilize an island buddy or your human resources department to help with groceries, errands, trash removal and other needs.

If you test positive:

You are required to remain at home for five days, and you must retest on day five. This result must also be called in to the COVID-19 Hotline. If others are in the home, correctly wear your mask covering your mouth and nose, isolate as much as possible and do not share items. Use a separate washroom if possible, and frequently wash your hands.

- **If you retest positive:** Remain in your home and test again in five days.
- **If you retest negative:** After five days and a negative test, you may leave your home, but must correctly wear your facemask covering your mouth and nose whenever you are indoors and within six feet of any person. You may return to work or school. You must call the COVID-19 Hotline with the results of your retest, positive or negative.

Close Contact:

If you have been less than six-feet away from a tested positive person for a cumulative total of 15 minutes or more over a 24-hour period

- **If you have symptoms,** get tested.
- **If you have no symptoms:**
- Correctly wear a mask and monitor yourself for symptoms. You may go to work or school so long as you correctly wear your mask covering your mouth and nose.
- Get tested five full days after the Close Contact whether you have symptoms or not.

If you have symptoms but test negative:

- You may still have COVID-19.
- Notify your human resources representative of your illness, which may be unrelated to COVID-19. Follow your company HR policies as regards sickness.
- **Normally, stay home** until you have gone 24 hours without symptoms and/or fever (without fever medications).
- **If symptoms persist,** get tested again.

RMI employees should receive their COVID-19 tests through the Leiroj Kitlang Kabua Memorial Health Center on Ebeye.

The Kwajalein Hourglass

Volume XXV No. 86

Wednesday July 20, 1988

A Publication of
the United States
Army Kwajalein
Atoll, Marshall
Islands

Kwajalein's Well-Equipped Hospital

By Scott Johnson
Hourglass Editor

Kwajalein's isolated location out here in the Pacific Ocean has many advantages. We have a small, safe community. Life is quiet, far from the hassles of freeway traffic and endless lines everywhere you go. Recreation opportunities are unsurpassed.

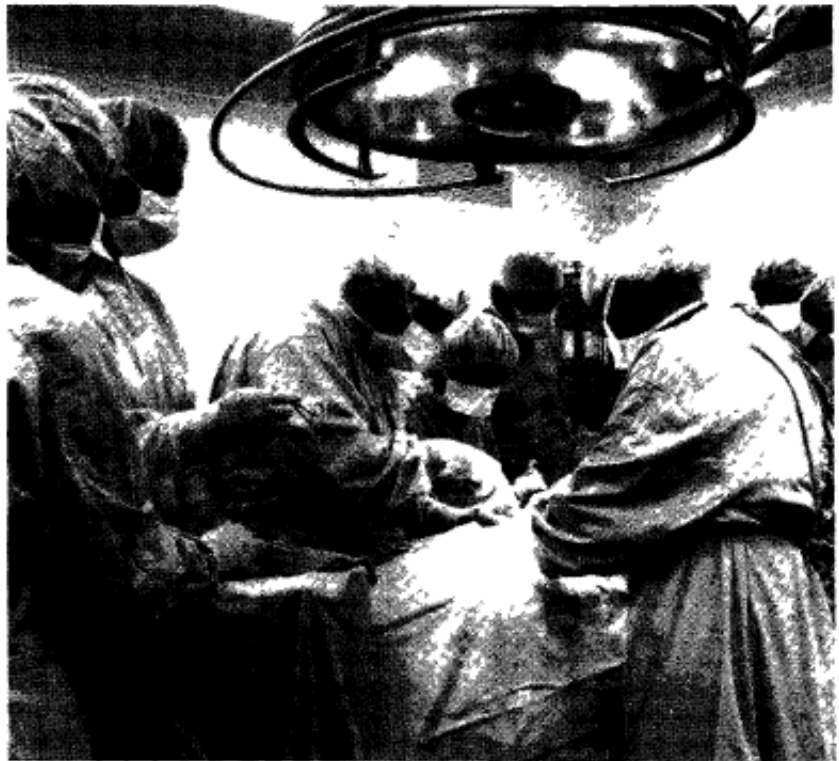
In the area of health, though, isolation can sometimes be a disadvantage. I spent nearly three years at an isolated research laboratory on Enewetak Atoll (350 miles from Kwajalein), where the closest thing we had to a hospital was our own medicine chest and a few medical books. Fortunately, we were able to call the doctors at Kwajalein's well-equipped hospital on our radio when we needed help or advice.

Kwajalein Hospital is larger and better equipped than can normally be found in communities as small as the one here on Kwaj. Staffed and operated by Pan Am World Services, Inc., the hospital is a lot more than just a simple clinic and dispensary. It is a full-service, 25-bed hospital that can provide short-term in-patient care, outpatient care, emergency treatment, obstetric services, general surgery and more. It is even responsible for some functions not normally associated with hospitals.

The hospital's staff consists of doctors, nurses and technicians of high professional calibre who are licensed to practice in various parts of the United States. Hospital Administrator Ray West says of them, "It's an outstanding staff. I've never worked with a better group of people."

The hospital is active 24 hours a day. Commuters can get appointments between 7 and 7:30 a.m., Monday through Friday. From 8-9 a.m. each weekday, the hospital provides a "sick call," which is intended primarily to give members of the work force the attention they need to get them back on the job quickly. A non-working resident may come to sick call, but if at all possible, it is preferable that he or she make an appointment instead.

Patients are usually seen by doctors on an appointment basis weekday mornings and afternoons, but emergency medical care is available at any time. Again, however, it is



Chief Medical Officer Dr. James S. Troxel performs surgery surrounded by his staff (Hourglass file photo)

best to restrict the after-hours visits to real emergencies. While registered nurses are at the hospital 24 hours a day, physicians and other necessary personnel carry beepers and must be called in when patients come in after hours. Residents are encouraged to make appointments for any problem that can wait until normal working hours.

According to West, "We can take care of just about any problem on a short-term basis." He notes that the emergency room is well-equipped, and includes numerous devices used in life saving measures.

For long-term care, specific problems or diagnostic studies that cannot be performed here, patients are medivac'd to specialized medical centers in Honolulu.

For patients that need hospitalization but do not require specialized care in Honolulu, in-patient care can be provided. Visiting

Continued on page 2

INSIDE

Classified	10
Movies	5
Sports	6
Surf and Sun	2
Television	12

Page 2 Hourglass, Wednesday July 20, 1988

Hospital

from front page

hours for patients run from 2-8 p.m.

In addition to a 7-bed male ward, 3-bed female ward and 2-bed isolation ward, the hospital boasts a 2-bed adult intensive care/coronary unit, with each bed monitored through a central monitor at the nurses' station. Also, there is a 2-bed monitored infant intensive care unit.

To support general surgery as well as more routine treatments, the hospital includes a full-service lab stocked with modern, automated test equipment. An X-ray department is capable of doing most of the

specialized studies that may be required by the population on Kwajalein. The hospital pharmacy has a large formulary consisting of all the most common drugs, all of each drug manufacturer's wares may not be carried, but the stock of generic drugs is sufficient for just about any problem that may come up.

In addition to these primary functions, the hospital provides a number of ancillary services, including the mortuary, animal veterinary services, potable water testing laboratory services, a physical examination section, inspection of incoming shipments of food, sanitation inspections at public dining facilities, a medical social worker, and more.

Some of these different departments and functions will be covered in more detail in future issues of the Hourglass.

Macy's
**Pre-Inventory
Clearance Sale**

**Shop For
Markdowns
Throughout
The Store**



L I M
I N A T E
SEXUAL ASSAULT
KNOW YOUR PART
DO YOUR PART



www.deomi.org



www.milsuite.mil



www.safehelpline.org | 877-995-5247



www.sapr.mil

COMMUNITY CLASSIFIEDS

The community wants to hear from you. Email announcements and advertisements to kwajalein-hourglass@vectrus.com Wednesdays by close of business. Ads received after deadline will be published in the next issue of The Kwajalein Hourglass.

ARMY REGULATIONS

TOBACCO USE. USAG-KA Policy Memorandum 600-8 protects others from the negative impact of tobacco use. On USAG-KA, smoking is permitted in designated smoking areas only. Smoking and cigarette butt receptacles must be at least 50 feet from the entrance of facilities.

CANDLES and open flames are not permitted in BQ rooms. The Kwajalein Fire Department thanks you for keeping your neighbors safe.

METAL DETECTORS are not allowed on Kwajalein according to Army Regulation. Unexploded Ordnance exists and could be dangerous if disturbed.

Not allowed on USAG-KA: bow and arrow, air guns, paint ball and other projectile weapons.

CLASSES

ALCOHOLICS ANONYMOUS. Open meetings for this group are Saturdays at 6 p.m. in the REB, Room 213. Contact the Island Memorial Chapel for more information at 5-3505 and at kwajchapel@gmail.com.

BLDG. COORDINATOR TRAINING. This training for building managers is required by AR 420-1. Kwaj training occurs on the first and third Wednesdays of each month at 10 a.m. in the Religious Education Building. Roi-Namur training occurs on the second Wednesday each month at 9:30 a.m. in C-building. Call 5-3364 to register.

FACILITIES

RACQUETBALL COURT CODE. Residents can obtain the door code from the MWR Desk at the Grace Sherwood Library. The code will not be given out over the phone. Contact MWR at 5-3331 with questions.

JOBS

To research and apply for government employment opportunities on U.S. Army Garrison-Kwajalein Atoll and worldwide, visit usajobs.gov. Write to kwajaleinhourglass@vectrus.com to remove your listing.

AKIMA is hiring for the following on-island positions: Communications Clerk (ID: TRU01101); Communications Specialist (ID: TRU01100); and Fiber / Cable Technician (ID: TRU01099). Applicants must currently reside on USAG-KA and possess a valid passport. For more information and a list of required qualifications, visit https://akima.taleo.net/careersection/akimalc_cs/jobsearch.ftl. Apply online or send resume to Jeannette McIlwain at jeannette.mcilwain@akima.com.

ADMINISTRATIVE ASSISTANT. This position provides daily administrative task support for operations at the Island Memorial Chapel. For questions or to submit a resume, please call 5-3505. Send to kwajchapel@gmail.com and Ch. Brian Conner at brian_conner@sbcglobal.net.

CALIBRE seeks a Military Material Specialist. For more information, or to apply, visit <https://jobs.silkroad.com/calibresys/https://calibresysca->

reerssilkroadcom/jobs/4013.

COMMUNITY BANK seeks a banking center service specialist/teller. This is a part-time on-island hire position for 20 hours per week. Submit applications to www.dodcommunitybank.com. Call Camellia Bobo at 5-2292 for more information.

INTERNATIONAL SOS seeks a dental assistant and applicants for administrative positions. Send your resume to marykathleen.bryan@internationalosos.com.

KAIHONUA is hiring for multiple positions. For more information or to apply, please contact Tribalco Human Resources at 5-4344 and visit <https://honuserVICES.jobs.net/page/kaihonua>. Applicants must meet job requirements.

NAN, INC. seeks a project engineer, welder, welding inspector, quality control manager, and site safety and health officer. To apply, visit www.nanhawaii.com and contact Clint Ueatari or Kevin Short at 5-2632, 5-4995 or 5-4996.

QUANTUM DYNAMICS, INC., is accepting resumes for positions on Kwajalein and Roi-Namur in the following areas: vehicle maintenance, transportation motor pool, movement control and custodial. Apply to specific opportunities at <https://qdyncorp.com/home/careers/>. Contact Dolly Bakhsh, HR manager, at 5-0782 and dbakhsh@rmi.qdyncorp.com, or Sammy Juda, administrative assistant at 5-4916 and sjuda@rmi.qdyncorp.com. You may also visit the HR Office in Bldg. 700.

RGNEXT, LLC seeks qualified can-

didates to fill several open positions on Kwaj and Roi in engineering, technical, COMSEC and other areas. For information and to apply, go to www.rgnext.com.

RGNEXT, LLC seeks a full time Administrative Assistant. This is an on-island hire. To apply, email Stella Lorok at Stella.Lorok@rgnext.com or call 5-1976.

SUBSTITUTE TEACHERS. Kwajalein School System is hiring part-time substitute teachers. These are part-time on-island hire positions with no guaranteed hours. Minimum requirements include a four-year degree, love of working with children in grades K – 12 and confidentiality. A teaching certificate is preferred. A CNACI background check must be completed after receiving a job offer. Those interested should apply at Careers.Vectrus.com, search for "sub-

stitute teacher," or, send a resume and letter of application to uhrenp@kwajalein-school.com.

TRUESTONE is hiring for multiple positions. Contact Tribalco Human Resources at 5-4344 and visit <https://www.akima.com/careers/>. Visit www.tribalco.com/careers.html.

NOTICES

THE COUNTRY CLUB AND GOLF COURSE ARE CLOSED. Until further notice, the Kwajalein Country Club & Golf Course are closed from 6 p.m. to 6 a.m. during the road closure. Your continued patience is appreciated.

LEGAL COUNSEL. USAG-KA Attorney Ben Clancy is on travel leave. For notary services, contact Attorney Dr. David Creed at david.m.creed.civ@army.mil for an appointment. USAG-KA Legal is not able to provide real estate closing services or estate planning services—only Powers of Attorney.

ISLAND ORIENTATION and Newcomer's Briefings take place in the Religious Education Building behind the Island Memorial Chapel. Email KWAJ_OSO_Ops@Vectrus.com or call 5-3511 to register.

USAG-KA Fire Prevention Office Monthly Tip

Fire Drills

Fire drills conducted annually by the Building Manager/Evacuation Coordinator.

The BM/EC should ensure the facility has a Fire Evacuation Plan in place.

Fire Reporting Procedures: Call 9-1-1, activate the fire alarm, or shout

FIRE, FIRE, FIRE! Once outside, report to a predesignated area for accountability.

Once out, stay out! No one is to return, until the "ALL CLEAR" is given.

Complete a Fire Drill Report to document that the fire drill was conducted.

Maintain a record of all the fire drills conducted at your facility.

Please contact our office for questions or assistance at 5-2137



Sgt. 1st Class Effie Banks SHARP Victim Advocate

Work: 805-355-0660

or 805-355-1419

USAG-KA SHARP Pager:

805-355-3241 #0100

DOD SAFE Helpline:

877-995-5247



SHARP

SEXUAL HARASSMENT/ASSAULT RESPONSE & PREVENTION

CONTACT THE USAG-KA SEXUAL HARASSMENT/ ASSAULT RESPONSE AND PREVENTION VICTIM ADVOCATE

ARMA. Log in to ArMa, the Army Maintenance Application, to report issues for all buildings maintained by the Department of Public Works. For more information, please contact DPW at 5-3550.

QUARTERLY INNOVATION CHALLENGE. Send great ideas for improvements and innovations to Col. Tom Pugsley. Winners will receive an official innovator's award and a special AAFES gift card. To submit your idea, call the Commander's Hotline at 5-1098 or email USAG-KA Public Affairs Officer Mike Brantley, at james.m.brantley4.civ@army.mil.

BANKING CENTER ATM. The Banking Center ATM is back in service. The Community Bank thanks you for your patronage.

AUTOMOTIVE LICENSING. The Automotive Licensing Office has moved to Bldg. 808. Please visit during regular hours of operation to complete license testing and documentation.

COMMON ACCESS CARD OFFICE is open Tuesday through Saturday from 8 a.m. to 4 p.m. Schedule appointments at <https://idco.dmdc.osd.mil/idco>.

The SELF HELP CENTER is in Bldg. 1791. Hours of operation are Monday, Wednesday, and Friday, 9:30 a.m. - 6 p.m. Visit Self Help for tools and materials for household upkeep projects.

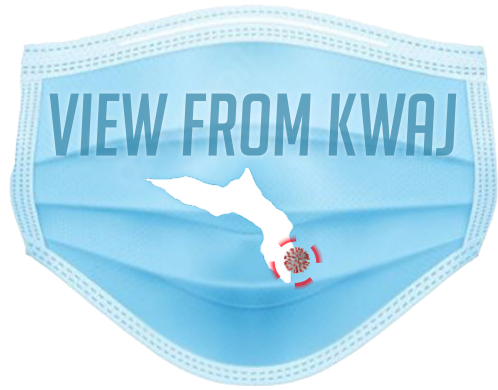
DON'T TAKE CULTURAL ARTIFACTS. Remember, it is illegal to remove cultural resources from the atoll. This includes any protected species, unexploded ordnance, WWII-era artifacts and ancient Marshallese artifacts. These resources are protected under U.S. federal and RMI law. Please do not remove these pieces of atoll history from Kwajalein. For questions contact the Kwajalein Archaeology Office at 5-8867.

CALL THE VET CLINIC. Call 5-2017 or email the Veterinary Clinic at kwajaleinveterinaryclinic@international-sosgs.us to make an appointment.

CART RENTALS. All cart operations have moved to the Bowling Center on the first floor of Building 805. Call 5-3439 for more.

EQUIPMENT RENTALS. When requesting a tent, two weeks' notice is required for dig permit approval. To request tables, linens, chairs, bounce houses, or MWR equipment, call 5-3331/3332 or visit the Grace Sherwood Library in Bldg. 805 Tuesday through Friday from 8 a.m. - 5 p.m.

KWAJALEIN GIRL SCOUTS. The Kwajalein Girl Scouts are open to all school-aged K-12 girls on Kwajalein (USAGSO.org). Membership fees are \$45. Also seeking adult volunteers. Contact Carrie Aljure at whatacod@aol.com.



Discarded masks are showing up around Kwajalein, like this one photographed outside Kwajalein High School earlier this week. Please make every effort to discard used facemasks in a trash bin to keep Kwajalein beautiful and litter-free.

BE SAFE ON KWAJALEIN

- Be aware of your surroundings and report suspicious behavior to the Provost Marshal's Office at 5/4445 or 5/4449.
- Lock the doors to your quarters and secure your windows.
- Do not travel alone. Have a buddy when you walk at night.
- Look out for your fellow island residents.
- Avoid low-lit areas of the island.

TO REPORT ANY EMERGENCY, DIAL 911.

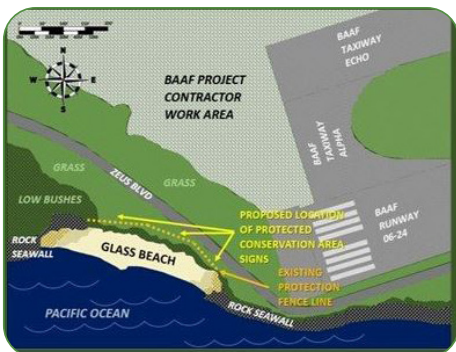
ALCOHOLICS ANONYMOUS OPEN MEETINGS



SATURDAYS AT 6 P.M.
ISLAND MEMORIAL CHAPEL
RELIGIOUS EDUCATION BUILDING
KWAJALEIN

WEDNESDAYS AT 6 P.M.
C-BUILDING
ROI-NAMUR

FOR MORE INFORMATION, CONTACT THE
ISLAND MEMORIAL CHAPEL AT 5-3505
KWAJCHAPEL@GMAIL.COM



GLASS BEACH OFF-LIMITS TO UNAUTHORIZED PERSONNEL

The beach at the western end of the runway, known as “Glass Beach,” is temporarily designated as a “Protected Conservation Area.”

Access is permitted only to government officials/contract employees involved in the surveillance or management of the conservation area until further notice.

No unauthorized personnel are permitted.

Contact Patrick Chauvey, 5-0129,
for more information.

CLEAN CLOTH FACE MASKS AND COVERINGS AT LEAST ONCE PER DAY

HOW TO CLEAN



WASHING MACHINE
REGULAR LAUNDRY DETERGENT

ENGINE IN KWALKWOL KO
KOJERBAL SOAP IN KWALKWOL KO
REKKAR NAN NUKNUK

HOW TO DRY



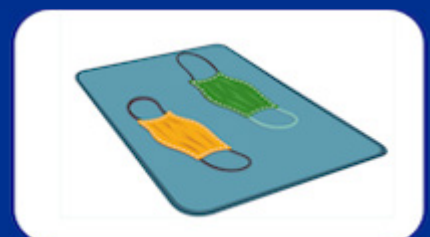
WASH BY HAND
USE BLEACH-BASED SOLUTION

KWALKWOL KON BA
KOJERBAL JERAJKO AK KEIN
KWALKWOL KO REKKAR



DRYER
HIGHEST HEAT SETTING

MACHINE IN KOMODADE
LELAK NAN KAJURTATA IN
DRYER NE



AIR DRY
LAY FLAT AND ALLOW TO
COMPLETELY DRY

KOMODEIKI IMEJATOTO
ELAKE IM KOTLAK BWE EN
KOMODEADE IAIJET



Republic of the Marshall Islands
Office of the Chief Secretary
P.O. Box 15
Majuro, MH 96960, Marshall Islands

PRESS RELEASE

RMI to Open Borders

On 1 September 2022, the Cabinet met and approved opening of RMI's border on 8 September 2022.

Incoming international travellers will no longer be required to register through the Safe Travels Program (as it will cease to exist after 7 September 2022). Travelers will have to book their journeys into the RMI directly with United Airlines and other international airlines.

The **only requirement to book or buy a ticket**, will be for a passenger to submit a copy of their COVID-19 vaccination card to UA. 6 months+ to 4 years old (the youngest group to receive the COVID-19 vaccine) are required to be fully vaccinated effective by 1 October 2022. They will join 5 yrs and older on requirement to be fully vaccinated before entering the RMI.

On arrival, the current protocols approved by Cabinet will still remain in place (until further notice).

Prerequisites (pre-travel) to RMI

- Fully vaccinated against Covid-19: Primary series and boosted as eligible.
- Mask wearing enroute and practicing good hand hygiene.

Upon Arrival in the RMI

- Testing on Arrival in RMI
- Rapid antigen test (Ag-RDT): Treatment as appropriate.
- Five days home quarantine/isolation. If negative rapid antigen test on arrival, can move around in public but must mask up.
- Anyone that initially tests negative on arrival and later develop symptoms consistent with COVID-19, should report to a health facility for COVID-19 testing and access to therapeutics (if eligible).

END//

Why the additional HPCON measures?

USAG-KA is fortunate to have zero hospitalizations despite **372** cases of COVID over the last **4 weeks**.

Restrictions are implemented to control the spread of COVID in order to not overwhelm medical capacity, impact mission or the delivery of critical services, and keep everyone as safe and healthy as possible.

Understand that current restrictions are TEMPORARY!

We will repeal these HPCON restrictions and restore services when case-rate reduces over the next few weeks.



Together we can #KWashTheBug!

E-WARENESS WHAT IS A HAZARDOUS WASTE COLLECTION AREA?

A **Hazardous** Waste Collection Area is a designated location where a generator (i.e., Kwaj Ops, Utilities, Amec, San Juan, Nan, etc.) accumulates as much as 55 gallons of hazardous waste in containers at or near any point of generation (i.e., shops, project site).

Questions, call Environmental at 5-1134.

Jikin ae kwobej ko rekauwotata rej bed ijoko emoj kamelim an department/shop ko likit tarin 55-gallon in kwobej ko rekauwotata ilo container ko ijoko jermal ko rej komon ie.

Kajitok, kiir Environmental ilo 5-1134.

Notice of Availability USAG-KA Draft Document of Environmental Protection for Drinking Water Treatment

The U.S. Army - Kwajalein Atoll (USA-KA) Environmental Standards (UES) require specific USAKA activities with the potential to affect public health and the environment must be defined in a Document of Environmental Protection (DEP). The UES further provides a review and comment period by the public and the regulatory agencies on the draft DEP.

The Draft DEP for the continued activity of Drinking Water Treatment includes the operations and requirements for providing safe drinking water to the U.S. Army Garrison – Kwajalein Atoll.

The public is invited to review and comment on the Draft DEP. The Draft DEP and the UES are available for review at the Grace Sherwood Library (Kwajalein Island), the Roi-Namur Library, and the RMI Environmental Protection Authority (RMIEPA) offices on Ebeye and Majuro.

Written comments regarding the Draft DEP can be directed to:

Patrick Chauvey
U.S. Army Garrison-Kwajalein Atoll
Attn: USAG-KA Environmental Coordinator
PSC 701 - Building 730
APO AP 96555-9998

Or sent electronically to:

Patrick.R.Chauvey.civ@army.mil

A period of at least 30 days will be provided for public comment. Comments on the Draft DEP should be postmarked no later than October 3, 2022.

Naan In Kokabiloklok USAG-KA Draft Ikijen Wewein Ad Kojbarok Jukjukin Ped Eo Kab Men ko Bwinnid

USAG-KA Environmental Standards (UES) ej aikuj bwe aolep makitkit ko an USAG-KA make im remaron jelet ejmour eo an jukjukin ped eo ren alikkar ilo draft eo naetan Document of Environmental Protection (DEP). UES eo ej bareinwot laajrake juon ien nan an public im agency ko kenono im bok melele ko ikijen draft in..

DEP in ej wonmanlok kin makitkit ko an jikin Komman Dren eo ilo jukjukin ped eo ekoba aolep jermal im kakien ko nan kejbaroke dren in draak eo ilo U.S. Army Garrison – Kwajalein Atoll.

Aolep rej ruwainene nan kenono im bok melele ko ikijen draft in. DEP in kab UES jimor bellok nan adwoj riit im melele kaki ilo library ko ad ion Kwajalein – Grace Sherwood Library im Roi-Namur Library, im bareinwot ilo opii ko an RMI Environmental Protection Authority ion Ebeye kab Majuro.

Kajitok im Kakobaba ko remaron etal non:

Patrick Chauvey
U.S. Army Garrison-Kwajalein Atoll
Attn: USAG-KA Environmental Coordinator
PSC 701 - Building 730
APO AP 96555-9998

Ak jilinlok ilo email:

Patrick.R.Chauvey.civ@army.mil

Enaj bellok iumwin 30 raan non jabdre-wot eo ekonaan likit melele ko ak wawein im lemnak ko kin DEP Draft in. melele kein rej aikuj postmark mokta jen October 3, 2022.



Kwajalein Fogging Schedule

- **5:30-7:30 p.m.**
- **Thursday, Sept. 1 through Saturday, Sept. 3**
- Weather dependent
- Avoid fogged area for ~30 minutes



Fogging with Eco-friendly EcoVia EC Insecticide

- Liquid botanical oil insecticide
- Active ingredients include Thyme Oil & Rosemary Oil
- Safe to use in and around homes and near water
- Safe to use around children and pets

Do your part to eliminate flies:

- Do not add food waste directly into open trash cans such as the Emon Beach trash containers, large black trash cans, or residential green trash receptacles.
- Always seal food and animal waste inside trash/plastic bags before adding to trash cans.
- Periodically clean outdoor trash receptacles.



Roi-Namur Fogging Schedule

- **5:30-7:30 p.m.**
- **Tuesday, Sept. 13 through Wednesday, Sept. 14**
- Weather dependent
- Avoid fogged area for ~30 minutes

Do your part to eliminate mosquitoes:

- Check for standing water where mosquitoes breed
- Dump any accumulated water at least weekly
- Manage vegetation and eliminate accumulated leaves

KWAJ- EBEYE - FERRY SCHEDULE
Effective August 08, 2022

EBEYE - TUESDAY TO SATURDAY					EBEYE - SUNDAY & HOLIDAY				
ETD KWAJ	ETA EBEYE	ETD EBEYE	ETA KWAJ	TYPE VESSEL	ETD KWAJ	ETA EBEYE	ETD EBEYE	ETA KWAJ	TYPE VESSEL
0245	0310	0315	0340	FB N/1	0400	0425	0430	0455	FB N/1
0420	0445	0450	0515	FB 1	0500	0525	0530	0555	FB 1
0450	0515	0520	0545	FB 2	0600	0625	0630	0655	FB 1
0520	0545	0550	0615	FB 1	0830	0855	0900	0925	FB 1
0550	0615	0620	0645	FB 2	1140	1205	1210	1235	FB 1
0620	0645	0650	0715	FB 1	1530	1555	1600	1625	FB 1/N
0650	0715	0720	0745	FB 2	1700	1725	1730	1755	FB N
0720	0745	0750	0815	FB 1	2000	2025	2030	2055	FB N
					2200	2225	2230	2255	FB N
1140	1205	1210	1235	FB 2/A	Holidays	Only	Add	Extra	Run Below
					1830	1855	1900	1925	FB N
1440	1505	1510	1535	FB A	MONDAY				
1600	1625	1630	1655	FB A	0315	0340	0345	0410	FB N/1
1700	1725	1730	1755	FB A	0500	0525	0530	0555	FB 1
1730	1755	1800	1825	FB N	0600	0625	0630	0655	FB 1
1800	1825	1830	1855	FB A	0720	0745	0750	0815	FB 1
1830	1855	1900	1925	FB N	0830	0855	0900	0925	FB 1
1900	1925	1930	1955	FB A	1140	1205	1210	1235	FB 1
2000	2025	2030	2055	FB N	1440	1505	1510	1535	FB 1/N
2130	2155	2200	2225	FB N	1645	1710	1715	1740	FB N
Saturday	Only	NO	2130 run	2200 run only	1745	1810	1815	1840	FB N
2200	2225	2230	2255	FB N	1900	1925	1930	1955	FB N
					2000	2025	2030	2055	FB N
	FB =	Ferry	Boat		2130	2155	2200	2225	FB N



REPORTING OPTIONS FOR ADULT VICTIMS OF SEXUAL ASSAULT

There are two reporting options for victims of sexual assault: Restricted and Unrestricted. The major difference between these reporting options is that an Unrestricted Report will trigger an official investigation, include command involvement, and allow requests for an expedited transfer and/or military protective order, whereas a Restricted Report will not. Your SARC or VA can explain your options.

RESTRICTED REPORT

Filing a Restricted Report allows you to **confidentially** disclose a sexual assault to a SARC or VA **without** notifying your command or law enforcement.

When you file a Restricted Report, you are eligible for:

- Medical treatment
- Sexual Assault Forensic Exam
- Counseling
- Chaplain Services
- Special Victim Counsel
- Legal Advocacy
- Victim Advocacy

You may change a Restricted Report to an Unrestricted Report at any time.

NEW UPDATE

A victim can file a Restricted Report even if...

1. The sexual assault has been inadvertently or previously disclosed to command by the victim, suspect, or third party;
2. The matter has been reported to law enforcement, to include the U.S. Army Criminal Investigation Division, by anyone other than the victim; or
3. An investigation is initiated, in progress, or closed.

Victims may elect to make a Restricted Report of sexual assault at any time, **EXCEPT** in cases where the victim:

- Personally reported the incident to law enforcement (including CID); or
- Previously filed an Unrestricted Report with a signed DD Form 2910 (the Victim Reporting Preference Statement) for the same sexual assault

UNRESTRICTED REPORT

Filing an Unrestricted Report allows for an official investigation, command notification, and reporting to law enforcement. You can make an Unrestricted Report to a SARC, VA, law enforcement official, a commander, or health care personnel.

When you file an Unrestricted Report you are eligible for:

- Medical Treatment
- Sexual Assault Forensic Exam
- Counseling
- Chaplain Services
- Special Victim Counsel
- Legal Advocacy
- Victim Advocacy
- Command Support/Intervention
- Official Investigation

An Unrestricted Report also allows you to request protective and support measures like an Expedited Transfer or Military Protective Order. An Unrestricted Report cannot be changed to a Restricted Report.

Recognizing and reporting retaliation for an Unrestricted Report of sexual assault:

Retaliation may consist of the following acts:

- Reprisal
- Ostracism
- Maltreatment, including cruelty and oppression

Report Retaliation to the following:

- Brigade SARC
- Installation IG
- DoD IG Hotline: 800.424.9098
- DoD Safe Helpline: 877.995.5247

For more information on retaliation reporting options visit <https://www.safehelpline.org/experiencing-retaliation-after-sexual-assault>

THIS IS OUR ARMY.

@ArmyResilience  
www.armyresilience.army.mil

"Sexual assault and sexual harassment violate everything we stand for as Soldiers. It is our responsibility as One Army to take care of one another and not tolerate these violations."

**- Gen. James C. McConville, Chief of Staff
United States Army**



#KWASHTHEBUG POSTER CONTEST

CAST YOUR VOTE

USAG-KA thanks the many talented artists in the island community who submitted their outstanding submissions for the #kwashthebug poster contest!

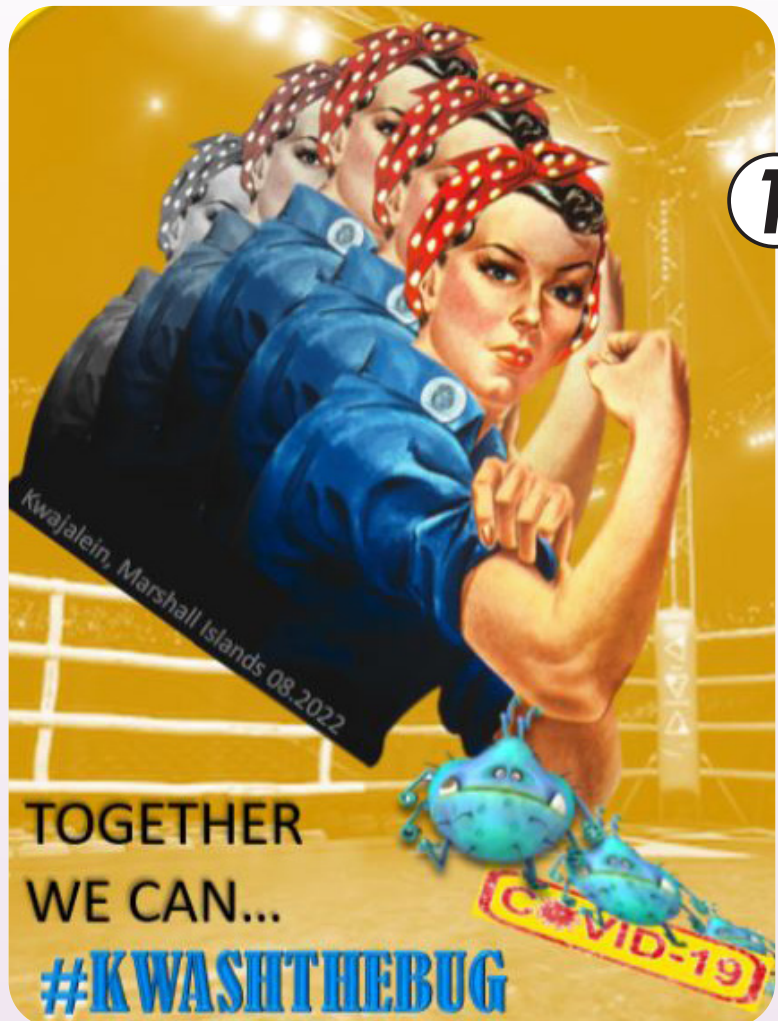
Now, the USAG-KA Public Affairs program needs your vote to help determine the winner.

CAST YOUR VOTE

Choose a poster to win, and send the number for your choice to USAG-KA Public Affairs Officer Mike Brantley at james.m.brantley4.civ@army.mil by **September 9**.

FOR MORE INFORMATION

For questions about the contest, please call the Commander's Hotline at 5-1098.

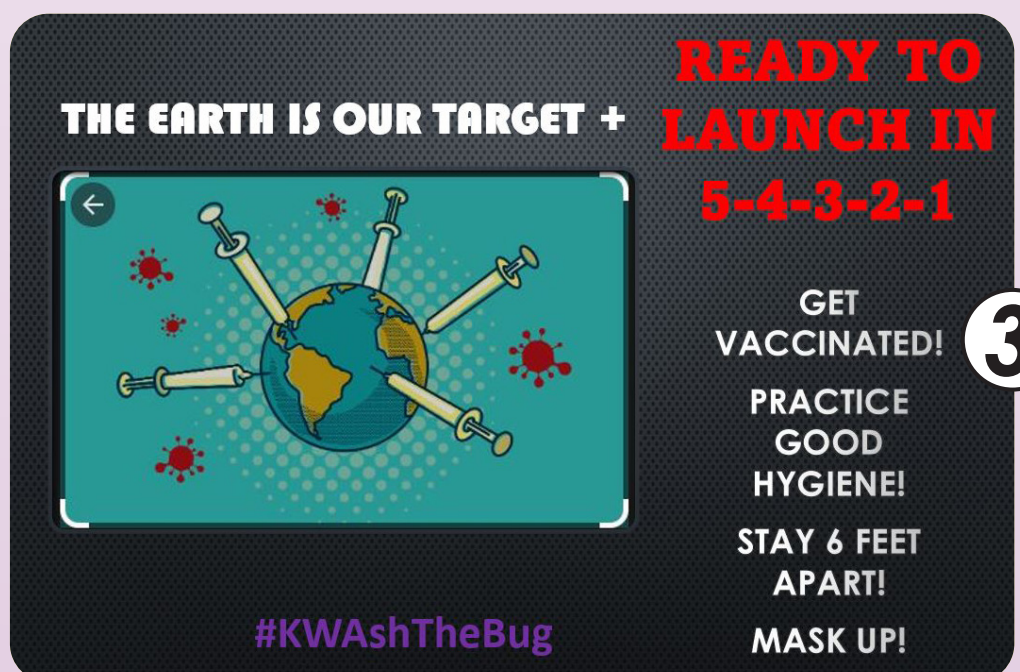


CONTEST PRIZES

First Place
One large pizza

Second Place
One medium pizza

Third Place
Chicken wings



RTS WEATHER STATION STAFF

WEATHER DISCUSSION

Drier, more stable weather is in store for Kwajalein Atoll on Saturday heading into the weekend as the Intertropical Convergence Zone weakens over RMI.

Widely scattered showers will taper off across the area on Saturday morning as ITCZ activity shifts west of the atoll and a region of dry, sinking air aloft moves over the northern RMI.

Expect winds to fall to the low to upper single digits on Saturday, followed by a trade wind surge this weekend with winds sustaining in the mid- to upper teens late Sunday night into Monday. Shower coverage will increase on Monday, mainly to the south of the atoll as the ITCZ becomes more organized across southern RMI.

The ITCZ will build north and overhead during the start of this next workweek, leading to periods of scattered to numerous showers on Tuesday and Wednesday.

After a period of drier conditions and lower shower activity around mid-week, the second half of the workweek is expected to be unsettled and rainy with sporadic ITCZ surges over the area.

Significant rainfall and

lightning threats will be likely at times, but drier conditions are looking to set in by the start of the following week-end.

SATURDAY

Partly cloudy with widely scattered showers in the morning decreasing to stray showers in the afternoon. Winds will be ENE-ESE at 4-9 knots. Shower coverage will be 20 percent in the morning decreasing to <10% in the afternoon.

SUNDAY

Partly cloudy to mostly sunny with stray showers. Winds will be NE-E at 11-16 knots. Shower coverage will be <10 percent.

MONDAY INTO NEXT WEEK

Partly to mostly cloudy with isolated showers on Monday, building to scattered to numerous showers at times on Tuesday and Wednesday.

Winds will be ENE-ESE in the low to upper teens on Tuesday with winds diminishing on Wednesday to the upper single digits.

Expect light and variable winds with periods of significant shower activity and potential thunderstorms for the second half of the week, followed by drier conditions next weekend.

FROM THE GARRISON COMMAND SERGEANT MAJOR

Do your part as a Kwajalein resident.

- How can you improve your workspace or workplace?
- Is the outside of your facility clear of rubbish or do you need to get rid of unwanted trash?
- Stop parking in no parking areas/park only in designated areas.
- Use recycle bins located outside your facility properly.



SUN-MOON-TIDES				
	SUNRISE SUNSET	MOONRISE MOONSET	HIGH TIDE	LOW TIDE
SUNDAY	6:40 a.m. 6:57 p.m.	1:09 p.m. 12:05 a.m.	8:56 a.m. 2.2' 10:05 p.m. 2.9'	3:10 a.m. 0.9' 2:57 p.m. 0.9'
MONDAY	6:40 a.m. 6:56 p.m.	2:11 p.m. 1:02 a.m.	11:36 a.m. 1.9' -----	5:33 a.m. 1.1' 5:07 p.m. 1.2'
TUESDAY	6:40 a.m. 6:55 p.m.	3:15 p.m. 2:04 a.m.	12:22 a.m. 3.0' 1:48 p.m. 2.3'	7:42 a.m. 0.6' 7:16 p.m. 0.9'
WEDNESDAY	6:40 a.m. 6:55 p.m.	4:16 p.m. 3:08 a.m.	1:50 a.m. 3.5' 2:42 p.m. 2.8'	8:38 a.m. 0.1' 8:22 p.m. 0.4'
THURSDAY	6:40 a.m. 6:54 p.m.	5:13 p.m. 4:12 a.m.	2:44 a.m. 4.1' 3:21 p.m. 3.3'	9:18 a.m. -0.4' 9:09 p.m. -0.2'
FRIDAY	6:40 a.m. 6:54 p.m.	6:05 p.m. 5:14 a.m.	3:27 a.m. 4.5' 3:56 p.m. 3.8'	9:53 a.m. -0.7' 9:49 p.m. -0.6'
SEPTEMBER 10	6:40 a.m. 6:53 p.m.	6:53 p.m. 6:12 a.m.	4:05 a.m. 4.8' 4:29 p.m. 4.1'	10:26 a.m. -0.9' 10:26 p.m. -0.8'



Work and play safely.

For additional weather information, please click the logo to visit the RTS Weather Station online.



USAG-KA is starting back up the Yard of the Month program for all residents of Kwajalein Army Family Housing.

The Kwajalein Housing Office will choose three island quarters for consideration. One lucky winner will take the prize.

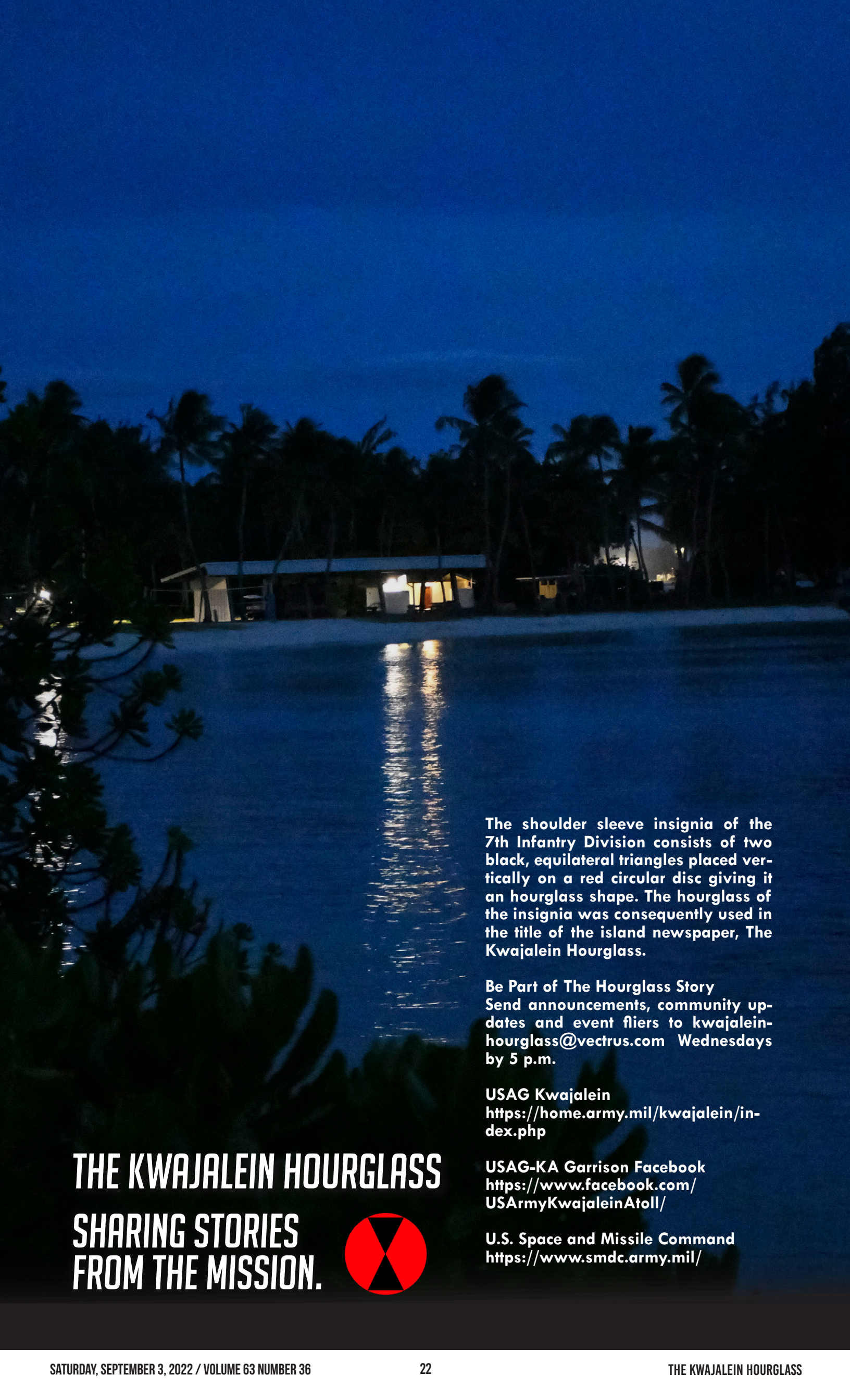
Prizes could include a free MWR cart rental, pizza from the Sunrise Bakery, or a game of bowling.



UNITED AIRLINES FLIGHTS THROUGH OCTOBER

Monday
UA155 (HNL)
Check-in: 3:15 – 4:30 p.m.

Tuesday
UA154 (GUM)
Check-in: 10:45 – 11:15 a.m.



THE KWAJALEIN HOURGLASS

SHARING STORIES FROM THE MISSION.



The shoulder sleeve insignia of the 7th Infantry Division consists of two black, equilateral triangles placed vertically on a red circular disc giving it an hourglass shape. The hourglass of the insignia was consequently used in the title of the island newspaper, The Kwajalein Hourglass.

Be Part of The Hourglass Story
Send announcements, community updates and event fliers to kwajalein-hourglass@vectrus.com Wednesdays by 5 p.m.

USAG Kwajalein
<https://home.army.mil/kwajalein/index.php>

USAG-KA Garrison Facebook
<https://www.facebook.com/USArmyKwajaleinAtoll/>

U.S. Space and Missile Command
<https://www.smdc.army.mil/>