

# THE KWAJALEIN HOURGLASS



## THIS WEEK

### RTS CAL ZONE

WITH CALIBRATION LAB 2

### BAR LO EOK

AT USAG-KA RMI TOWN HALL 4

### TOUR DE FORCE

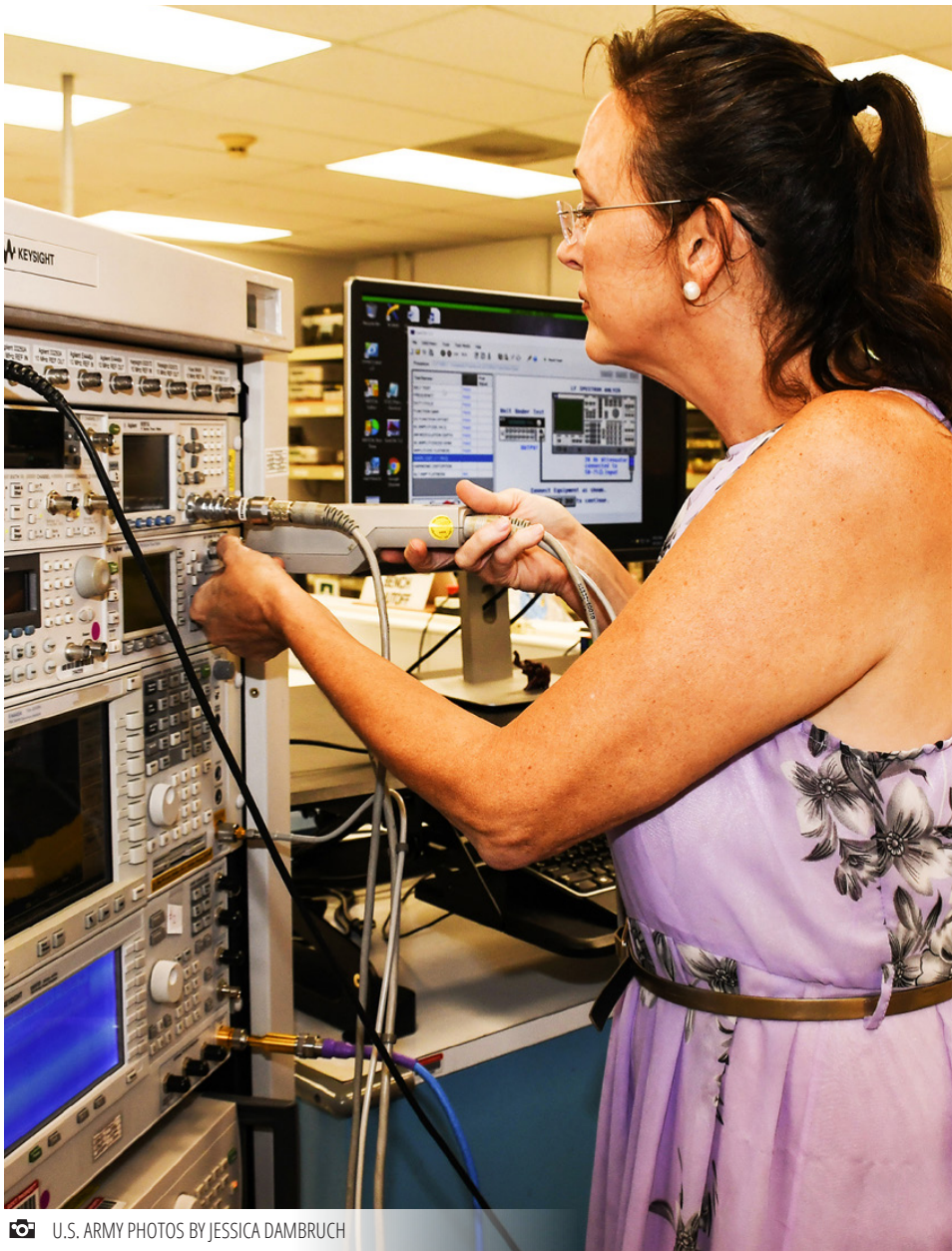
KWAJALEIN THANKS BARTEL 6

MARSHALLESE EMPLOYEES POSE FOR A PHOTO WITH USAG-KA COMMANDER COL. JEREMY BARTEL FOLLOWING THE RMI WORKFORCE TOWN HALL JUNE 25.



JESSICA DAMBRUCH





U.S. ARMY PHOTOS BY JESSICA DAMBRUCH

*Kwajalein calibrator Kari Junod connects a device to a microwave measurement receiver during a diagnostic test cycle at the Reagan Test Site Calibration Lab.*

# CALIBRATING KWAJALEIN

BY JESSICA DAMBRUCH

**Surrounded by** monitors and desks of metering equipment in the Reagan Test Site Calibration Lab, calibrator Kari Junod chooses one of a handful of colorful data transfer cables to automate calibration on a nondescript meter. She connects the device to a six-foot gray cube, papered in a neat row of labels for the purposes of calibration standard traceability.

The block is called the rack—a monster of a microwave measurement receiver. Just now, the rack has purred. Junod’s software interface offers a helpful schematic to verify where certain jacks should go.

With the flick of a switch, the small, blue screen comes alive and numbers flicker by as the machines “talk.”

Nearby, fellow calibrator Mike Kidd connects a multimeter to a small, beige calibration machine and checks the numbers scrolling on its green liquid

crystal display.

“We calibrate equipment that goes right back to the control room at the radar,” says Kidd, an Army veteran with a background in electronics. “It has to be accurate, precise and in good working order.”

Software programs help automate the work and assures that settings and connections are accurate, but the variety of tasks keeps the calibrators sharp in a way they crave.

“Every day is different, and I still learn things,” added Junod. “That’s why it’s fun.”

The Cal Lab is responsible for the specific calibrations and meticulous tracking of the more than 2,600 separate equipment items utilized by Kwajalein residents and range and base operations-connected customers on a daily basis.

Together, Junod, a U.S. Navy veteran with a background in aviation electronics, and Kidd, calibrate a variety of tools



*RTS Calibration Lab employees Mike Kidd, left, and Kari Junod are members of a small team that tests more than 2,000 assets needed to help support the mission.*

ranging in specifications and safety protocols that can take anywhere from one to eight hours to properly verify. Each machine has different needs.

Whether it be finetuning simple grocery weights, or verifying multimeters, pressure gauges and high-sensitivity tools for TRADEX operations, everyone from the Missile Defense Agency to Kwaj residents and visiting NASA scientists have benefited from RTS Cal Lab expertise.

That is a great track record for a shop of only five people.

## Standard Procedures

When it comes to calibration, the Army has zero gray areas. Many items have their maintenance requirements outlined in the Army’s schedule, TB43-180. Of the 2,600 items in the lab’s inventory, 2,028 items are retained and calibrated on Kwajalein.

Cal Lab supervisor and Range Generation Next Logistics Manager Brian Bussey didn’t appreciate how key calibration was to island life until he learned more.

A self-professed EOD guy and U.S. Army veteran, Bussey also supervises Property and Supply, the Calibration Lab and Kwajalein Explosive Ordnance Disposal. The Cal Lab has significantly evolved as a maintenance organization to do more with less, said Bussey. Its present staff manages a mission-critical workload that, two decades earlier, was performed by 11 employees. Over half of the Cal Lab workload is comprised of mission-specific equipment, compared

## THE KWAJALEIN HOURGLASS

The Kwajalein Hourglass is named for the insignia of the U.S. Army’s 7th Infantry Division, which liberated the island from the forces of Imperial Japan on Feb. 4, 1944. The Kwajalein Hourglass is an authorized publication for military personnel, federal employees, contractor workers and their families assigned to U.S. Army Garrison-Kwajalein Atoll.

Contents of the Hourglass are not necessarily official views of, or endorsed by, the U.S. Government, Department of Defense, Department of the Army or US-AG-KA. It is published Saturdays in accordance with Army Regulation 360-1. Phone: Defense Switching Network 254-5169 Local phone: 5-5169

Garrison Commander.....Col. Jeremy Bartel  
Garrison CSM.....Sgt. Maj. Ismael Ortega  
Public Affairs Officer.....Mike Brantley  
Communications Manager.....Randall Hisle  
Editor.....Jessica “JD” Dambruch





U.S. ARMY PHOTOS BY JESSICA DAMBRUCH



1) From left: Mike Kidd, Keri Juno, Michael Winks and Brian Bussey pose for a photo outside of the RTS Calibration Lab. 2-3) Equipment, toolkits and various devices in need of calibration await the lab employees in the production area.

with 24 percent of base operations equipment and just under 10 percent for other non-mission-related entities like Space Fence.

Understanding calibration is like sharing the truth about aviation with commercial passengers, says Bussey.

“People think it’s the pilots that got them there. To make the plane fly, it takes as many people on the ground and in the air. If it weren’t for the aircraft mechanics, the plane would never leave the ground—or stay in the air.”

Measure twice, cut once, calibrate often.

### Techs Talk

Much like an assembly line, equipment items are first-in, first-out and processed by Mike Winks, production control specialist, as they are entered into the lab tracking system. The Cal Lab’s human talent is a critical link in the calibration process. Winks begins the document legacy that tracks the history of each calibrated item and instrument.

The Cal Lab appreciates the efforts of customers to bring in gear situated on other mission islands and encourages those departments to submit their items on schedule or no more than a week before calibration is due. Utilizing tools that are out of calibration can also mean the difference between a day on the job and a needless, work-related injury.

Think of it like preventative auto-maintenance, or as Bussey suggests, the opposite of wine: “The longer you wait, it’s not going to get better with age.”

The lab knows the process is not easy. “It takes a lot of coordination and scheduling on everybody’s part. We really appreciate our customers on both sides—BOS and mission. Amentum-DI has really stepped up. They recognize the importance of maintenance and where it fits into the Army’s requirements.”

**“You’ve got to be a jack of all trades.”**

**—Brian Bussey**

When it’s time to work, calibrators pick up each equipment item and perform the specified calibrations, often helping troubleshoot issues with stateside manufacturers and packing gear for customers to ship off island for special attention.

The odd assortment of sensors, hand tools and oscilloscopes are staged in a shelved anteroom for calibrators to retrieve and work on in their production lab before equipment is returned to various departments.

In all cases, the team of five maintains meticulous records of the maintenance and calibration record for every piece of equipment that they intake and utilize. Every action goes into the equipment’s calibration record.

“We have a system,” said Kidd, of the

lab’s accountability. “We have labels for traceability on the equipment—for when it was calibrated and needs to come back in. Everything has to be traceable. The equipment is tested, and that equipment that tests is tested. There’s a chain of custody that can be reviewed in case of accidents. It’s just as important for us to make sure we don’t go delinquent.

The Cal Lab is also unique in that its people have the opportunity to work on a variety of tools, as opposed to specializing in one area or specialty. Like Junod and Kidd, calibrators tend to come in with various backgrounds in electrical and technical work.

They enjoy the exacting challenge and variety posed by the Army’s regulations.

“Anything we use to calibrate a customer’s equipment has to be four times as accurate,” said Kidd. “That’s the industry standard.”

The team members are as multifunctional as Swiss army knives: The ability to calibrate this volume of such diverse equipment is exceptional, says Bussey.

“Most of the radar equipment can be tough,” said Kidd. “It’s pretty high-tech. Little gauges and wrenches are pretty easy. I like that, even after more than 20 years, it’s still challenging. We’re both nerds, so we like the electronics stuff.”

“You’ve got to be a jack of all trades,” said Bussey. “The Cal Lab, the support personnel—they are the unsung heroes of the mission, in my opinion. It directly touches every operation.”





U.S. ARMY PHOTOS BY JESSICA DAMBRUCH

*More than 200 Marshallese employees join USAG-KA Commander Col. Jeremy Bartel smile for a Kwajalein Hourglass photo to commemorate his tour following the RMI town hall at the Island Memorial Chapel June 25. Bartel became garrison commander in July 2019 and played a key role in preventing the spread of Covid-19 in the Republic of the Marshall Islands.*

## GARRISON COMMANDER THANKS RMI EMPLOYEES

BY JESSICA DAMBRUCH

**Members of** Kwajalein's Marshallese workforce met with U.S. Army Garrison-Kwajalein Atoll Commander Col. Jeremy Bartel for an employee town hall June 25.

With assistance from Republic of the Marshall Islands Liaison Lanny Kabua and RMI Host Nation Specialist Mike Sakaio, Bartel and the employees explored a range of issues relevant to work on the garrison and shared their mutual appreciation for each other's contributions to life on the atoll.

Bartel first thanked those gathered for their work: "I just want to say thank you, for everything you do."

Of note were questions regarding shiftwork and conveniences for commuters. Some employees enumerated the potential benefits of adding mid-afternoon and later-morning ferries to the established schedule to accommodate those working early and late shifts. The afternoon ferry would reduce uncomfortably crowded commutes home, said one employee. Crowded ferries also get hot—as does the outdoor waiting area of Kwajalein's Dock Security Checkpoint. Installing fans would be helpful.

"The ferries are there absolutely to facilitate what you do on the island," said Bartel. "If there are better times for the ferries to go in the morning, we'll look at it. Remember, some of you work specific hours and we need to benefit the majority as we explore scheduling requirements."

Due to future construction planned for the Kwajalein Air Terminal, it would not be possible to add a restroom to the



*Bartel addresses RMI employees during the June 25 town hall meeting. Topics explored during the question and answer session addressed transit, employment benefits and appreciation for Bartel's service.*

Air Marshall Islands Terminal, though the garrison has explored alternative solutions with the private company, Bartel said.

An earlier solution—rest areas available in the Kwaj Lodge—are currently unavailable during the USAG-KA repatriation quarantine program.

Bartel said some topics would require more investigation: possible reinstatement of a shiftwork privilege available previous to 2018—access to a room for rest following work hours—and a healthcare solution for Marshallese employees while on Kwajalein. The ferry

schedule posed an inconvenience when commuting from Kwajalein to gain medical attention at the Leiroj Kitlang Kabua Wellness Center, an employee said, and asked if it was possible to relaunch First-Stop Clinic, a quick clinic first available on Kwajalein in the late 1990s.

"That's an interesting one," said Bartel. He acknowledged that he could not promise to implement the suggestion but would research it.

"I'll look into this and see how it ties in and might support the mission with a private venture. If it's something we can support on the contract and it makes





sense, I'm all for it."

Those with questions about pay were directed back to their human resources departments, and Bartel said he would advise contract partners on island that their questions were raised.

"Each contract here on island is run by the individual contractor," Bartel said. "Definitely keep having those discussions with your HR."

An item that will ultimately benefit garrison employees living on Enniburr and Ebeye is currently in progress. Though bidding on excess, "dispo'd" government-tagged furniture and appliances is no longer available on USAG-KA, the garrison has a process whereby excess articles are provided to the RMI government.

"The first people we want to have access to it are the workers," Bartel said, adding that he would work to expedite the transfer process.

Others thanked Bartel for his service and asked about possibilities to celebrate with him at community gatherings.

Dennis Joji, an employee of the Kwajalein post office, took the microphone to offer heartfelt thanks for the RMI shopping privileges and other services Bartel helped realize during his tour.

"We appreciate what you do here," Joji said. "We will miss you, but I appreciate what you do at a difficult time. There's nothing I can say other than thank you very much. There are so many things you do for us. Thank you so much."

In closing, as hands wiped away tears, the more than 200 employees gathered in the chapel rose together and sang a farewell song in Bartel's honor.

The colonel regained the microphone to make his farewell remarks to the gathering before everyone posed for a group photo together on the chapel lawn.

**Read on for Bartel's full farewell address.**



*Surrounded by thanks: Bartel, center, greets an RMI employee following the town hall. Bartel will complete his tour on USAG-KA next week after two years of service.*

I appreciate everything you all have done for the last two years. I know for many of you. You've been doing it for decades—your parents have worked here, and your families. This is a lifelong endeavor.

There is nothing we can accomplish on this atoll without what you give, every day, without your professionalism and your hard work. So, thank you. On a personal note, me and my family are going to miss the Marshall Islands. What a great, beautiful country with amazing, friendly people.

I can't think of a day where I didn't walk by and see one of you out there, and say 'lakwe,' and get a smile back and a similar response.

I am absolutely going to miss this place and everything you've built here. You will always be in my heart, and my family's hearts as we remember our time here, albeit as short as it was. I can't wait to come back in visit, when I don't have this uniform on.

I do thank you for everything. I am going to miss you. I can't wait to see you again.

If there is anything you ever need, and you see me on the street, please stop me and ask. Whether it's in the states, happenstance in Hawaii on a visit, or back here. Don't hesitate to say, "I remember you, back in 2019-21." I would stop, reminisce and talk. Thank you for everything you've done.





# BARTEL

## FULFILLS USAG-KA TOUR DE FORCE

BY JESSICA DAMBRUCH

**I**N April, U.S. Army Garrison-Kwajalein Atoll Commander Col. Jeremy Bartel stood before a group of newcomers at an island orientation. The employees had traveled thousands of miles to serve the Army mission in every sector of range and base operations. Now, their tour was just beginning as his grew short.

Bartel shared an overview of the Kwajalein mission—an endeavor he and garrison contract partners had supported without fail for two years. Then, he gave them some advice about time management.

“Get out there and do stuff,” Bartel said to the newcomers. “Most of your contracts are for one year. That’s 52 weekends. By the time you knock out illness, you’re at 48. Subtract the holidays, mandatory social events,

calls home, bad weather and work, and you’re down to 25 weekends to do things you bragged you’d do when you moved to Kwajalein, whether that’s diving, fishing, snorkeling, golf or getting in shape.”

As Bartel could attest, time flies. His tour on Kwajalein began in 2019 as he and his wife, Regan, joined the garrison. Together with the Host Nation team and civilian support personnel, Bartel dived into his work, engaging with local and national RMI government leaders to explore solutions to the atoll’s unique challenges.

Over many months, Bartel learned about the rich culture of the RMI and met with Kwajalein’s leaders and luminaries, visiting with Iroijlaplap Sen. Michael Kabua, fishing with Kwajalein Atoll local government Ebeye Major Hirata Kabua and working alongside personnel at U.S. Embassy Majuro.

Members of the Nitijela have praised

Bartel’s perseverance and work ethic in engaging tough issues. Bartel simply did not slow down, they said. Some of his long-term strategies to benefit Marshallese garrison employees will be realized pending future development, and others were initially raised as challenging town hall questions: upkeep to commuter laundry facilities, transit-related issues on Ebeye and Enniburr, grocery and dining services questions on Roi and playground maintenance on Kwajalein.

In the community, Bartel supported the MWR All Atoll Veteran’s Day Fishing Tournament and RustMan Triathlon. During softball season, he and Regan ran the bases with team Mayday at Brandon Field.

Bartel began to log dives. He looked forward to seeing his son again, a state-side student who would soon graduate from university.

Then came 2020.

Bartel, who had distinguished himself at Special Operations Command-Europe, would now define his USAG-KA tour with service during an emerging global health crisis.

After the RMI closed its borders to incoming travel to prevent the spread of Covid-19, the way forward proved to be a team effort: a coordinated endeavor between personnel from the RMI national and local governments, U.S. Space and Missile Defense Command, Installation Management Command, U.S. Embassy Majuro and contract partners.

Over several weeks, quarantine plans were tentatively developed and implemented, and Bartel played a key role in advising leadership of relevant safety and logistical needs.

On frequent trips to Majuro, Bartel discussed proposed repatriation program plans with community members. In the months that followed, the team refined operating procedures, tested safety in quarantine drills and prepared island facilities for quarantine. Meanwhile, base operations staffing shortages tested the resiliency of most departments in the Kwajalein workforce—especially emergency and medical services.

In March 2020, Bartel joined U.S. Ambassador to the RMI Roxanne Cabral and personnel from the Kwajalein Atoll local government for a special Ebeye resident town hall. He asked for assent from the community and its traditional leaders before repatriating a small number of mission-critical emergency services personnel. The small step made a big impact and ushered in repatriation.

Continuing mission operations under such reduced conditions would have posed a burdensome challenge without Kwajalein’s Marshallese employees. Bartel voiced his appreciation for the valuable mission role they played at his final RMI town hall June 25.

“There is nothing we can accomplish on this atoll without what you give, every day—without your professionalism and your hard work.”

Following the first tranche, USAG-KA employees, family members and RMI citizens began to arrive, and the garrison and its contract partners provided





COURTESY OF USAG-KA COMMANDER COL. JEREMY BARTEL

1



U.S. ARMY PHOTO BY JORDAN VINSON

2

services to the community while sustaining ongoing quarantine operations.

Milestones were achieved and surpassed. In February 2021, Kwajalein received its first shipment of the Pfizer vaccine. By March the required quarantine time on Kwajalein for incoming residents was reduced to 14 days.

As a result, families have been reunited with loved ones stranded outside the atoll.

“I think it’s great news that we are able to reduce the quarantine,” Bartel said at the March 27 Kwajalein town hall. “I see more reductions in the future, especially on the vaccinated route. Let’s just hold strong and do the right thing.”

After months of no travel, Bartel’s encouragement re-inspired USAG-KA residents grown restless in their Covid-free isolation, reminding them to stay the course and focus on their priority: mission support.

Today, Kwajalein’s travel restrictions remain in place, as do current quarantine requirements. The atoll remains one in a handful of communities worldwide with zero spread. Strict adherence to the atoll’s Covid-19 quarantine procedures has resulted in zero transmission in the RMI.

His perseverance and hard work have earned Bartel appreciation throughout the atoll. On Majuro this spring, he was honored in a rare motion by the Niti-jela.

One year after the first tranche of EMS personnel arrived on the atoll, island life is returning to a new normal. ATI and United Airlines flight schedules are being restored. The numbers of repatriated Marshallese citizens, Kwajalein employees and new residents is growing. USAG-KA has steadfastly continued mission support operations for the Ronald Reagan Ballistic Missile Defense Test Site.

Two years on Kwajalein goes by fast. “Don’t waste your time,” Bartel said. “There is so much to do on this island. Time will slip by. I’m speaking from experience. I pass that experience along to you.”



COURTESY OF USAG-KA COMMANDER COL. JEREMY BARTEL

3



U.S. ARMY PHOTO BY JESSICA DAMBRUCH

4

1) USAG-KA Commander Col. Jeremy Bartel visits with Iroijlaplap and RMI Sen. Michael Kabua at the 2021 RMI Constitution Day celebration on Ebeye. 2) Bartel accepts the USAG-KA Colors from Installation Management Command-Pacific Regional Director Dr. Christine Altendorf during the 2019 USAG-KA Change of Command Ceremony. 3) During his tour, Bartel made several visits to Majuro to

speaking with traditional and government leaders concerning Covid-19 policies and work on the atoll. 4) U.S. Ambassador to the Republic of the Marshall Islands Roxanne Cabral, left, and Bartel address traditional leaders and members of the Ebeye community during a town hall to discuss proposed repatriation plans for USAG-KA emergency services personnel in March 2021.





U.S. ARMY PHOTO BY JESSICA DAMBRUCH



U.S. ARMY PHOTO BY JESSICA DAMBRUCH



U.S. ARMY PHOTO BY JESSICA DAMBRUCH



COURTESY OF USAG-KA COMMANDER COL. JEREMY BARTEL



COURTESY OF USAG-KA COMMANDER COL. JEREMY BARTEL

1) USAG-KA personnel pose for a photo with Col. Jeremy Bartel, USAG-KA commander, center, following the 2020 USAG-KA Assumption of Responsibility to welcome Command Sgt. Maj. Ismael Ortega in December 2020. 2) It's a team effort: Bartel, left, introduces the USAG-KA Host Nation personnel in an address to repatriated Marshallese citizens in April 2021. 3) A mil-

itary Thanksgiving tradition is alive and well on USAG-KA. For Bartel's first Thanksgiving on island, he joined active duty military personnel to serve dinner to island residents at the Zamperini Cafeteria. 4) The fish were this big: In this courtesy photo, Bartel displays two beautiful mahi. 5) Bartel, right, poses for a photo with Lerioj Esther Zed-kaia from Majuro.





1

## SUMMER STORYTIME SCENES FROM “READ AROUND THE WORLD”



2



3

COURTESY OF AMBER BATES

Young participants in the Grace Sherwood Library’s summer program “Read Around the World” gathered at the library for a story hour with MWR Librarian Amber Bates last week. Young readers are able to compete for prizes by reading the most books during the program. Each week is themed for a different continent and includes fun library crafts for young readers and family members to enjoy. It’s not too late to sign up. For more information, contact the library at 5-3331. 1) MWR Librarian Amber Bates reads to young Kwaj residents during the Grace Sherwood Library story hour last week. 2) Zaviah Wheeldon, left, and her mother Hannah work on crafts together. 3) Charlotte Dawicki holds up an especially stylish hot air balloon, complete with eyeballs during the library craft hour.

## MISS RMI VISITS USAG-KA YOUTH

HOURLASS REPORT

The first ever Miss Marshall Islands, Billma Krystalena Peter, visited the Namo Weto Youth Center June 13.

Peter’s multi-stop visit was coordinated by the USAG-KA Host Nation Office and RMI Liaison Office as part of a larger initiative by the RMI Office of Commerce, Investment and Tourism. During her visit, Peter also met with Kwajalein and Roi residents.

At the youth center, Peter discussed her experience as a representative of the Republic of the Marshall Islands, her visits to various islands, including outer islands, Marshallese culture and her project initiative to reduce plastic pollution and ways that we could help in this initiative.

The students in attendance enjoyed listening to her experiences and shared their own experiences about life on Kwajalein and activities at the youth center.



COURTESY OF RACHEL RACZYNSKI

1) Billma Krystalena Peter, Miss Marshall Islands, visits with young Kwajalein residents at the Namo Weto Youth Center. 2) Teens, and CYSE employees pose for a photo with Peter.



# U.S. SPACE AND MISSILE DEFENSE COMMAND HISTORY

BY SHARON WATKINS-LANG, USASMDC HISTORIAN

When U.S. Army Space and Missile Defense Command assumed responsibility for the Kwajalein Missile Range and later Fort Greely, Alaska, the community infrastructure was already intact.

With the deployment of the SAFE-GUARD system in North Dakota in the early 1970s, it was necessary to construct facilities, services and the infrastructure to connect them all—everything from housing, barracks, mess hall and commissary to PX, library and gymnasium.

Another important part of this Army community was building 340: a 150 seat non-denominational chapel. On June 24, 1973 at 11 a.m., the U.S. Army Safeguard System Grand Forks Tactical Sites Facilities held a special dedication ceremony for their new post chapel. Measuring 8,378 square feet with more than 17 rooms, the one-story chapel included the sanctuary, offices for the chaplains and their administrative personnel, a kitchen area, and a general purpose room which can be used for large groups or partitioned off for use as Sunday school classrooms.

The Chapel is one of buildings which still exist at the former Missile Site Radar complex.

1-2) These undated U.S. Space and Missile Defense Command photos show interior and exterior views of the post chapel at the U.S. Army Safeguard System Grand Forks Tactical Sites Facilities photos. As USASMDC Historian Sharon Watkins-Lang notes about the interior image, "The image with the people seems to be from a wedding collection. It is the only one which shows the very 1970s banner behind the altar which several people have said has the shape of a Spartan interceptor."



①



②



U.S. ARMY PHOTO BY SPC. JESSICA SCOTT

Soldiers complete a 5K in preparation for a jungle operations training course at Schofield Barracks, Hawaii, May 14, 2021.



# VANDENBERG SPACE WEATHER TEAM SUPPORTS DOD, INTERNATIONAL ALLIES AND COMMERCIAL PARTNERS 24/7

## EXTERNAL REPORT

By Vandenberg Space Force Base  
Public Affairs

**VANDENBERG SPACE FORCE BASE, California**—A small team of space weather experts at the Combined Space Operations Center here makes a significant impact by providing space weather predictions for the DoD, international allies, and commercial partners.

Assigned to the Combined Force Space Component Command's 614th Combat Training Squadron, the flight of seven enlisted personnel and one officer maintains a 24-hour watch for space weather, seven days a week.

"Space weather must be factored into any calculation we make, particularly with regards to using our space-based capabilities," said Maj. Gen. DeAnna Burt, CFSCC commander, responsible for ensuring combat-relevant space capabilities are reliably delivered to combatant commanders, coalition partners, the Joint Force, and the nation. "Accurate predictions and time to maneuver are what leaders need to make good decisions, and our amazing space weather flight here provides that to the CFSCC and a whole host of other customers."

Using space weather data gleaned from both classified and unclassified information platforms, fed by sensors located worldwide and in space, the 614th Space Weather Flight produces timely reports regarding solar activity for its users.

"We communicate with other organizations, specifically the 2nd Weather Squadron and the 557th Weather Wing, both located at Offutt Air Force Base, NE, to gather information," said Master Sgt. Christopher Gates, flight chief for the 614th Space Weather Flight and 23-year veteran of Air Force weather. "We also communicate with space agencies from our partner nations in order to make sure their assets are protected as well."

Daily space weather briefings produced by the 614th Space Weather Flight are distributed to NATO partners and commercial partners through the CFSCC's Commercial Integration Cell, in addition to the DoD, including U.S. Space Command and units under the U.S. Space Force.

"The most rewarding part of this job is using our understanding of how the sun's energy output can change the space environment we operate in to help people make better decisions," said Capt. Matthew Marlow, flight commander for 614th Space Weather Flight. "Because changes in the sun's output drive space weather, space operators need to be aware and adjust as needed."

One of the main areas the weather flight assists with is determining whether malfunctions on satellites are caused by space weather or by other causes. An example of this occurred in April 2019, during an investigation into the sudden



*Airmen assigned to the 614th Space Weather Flight stand for a photo at Vandenberg Space Force Base, Calif., on May 26, 2021. Working at the Combined Space Operations Center here, this small team is charged with providing space weather predictions for the DoD, international allies, and commercial partners.*

failure of an Intelsat 29e geostationary relay station. Following the CFSCC's Commercial Integration Cell request to assess the space environment during the outage, the weather flight poured through its data. It helped determine that an electrostatic discharge event related to solar weather activity likely led to the equipment failure.

According to the space weather experts here, the adverse effects of space weather activity on operations and equipment are only expected to increase over the next couple of years as we reach what is known as a "solar maximum."

"The sun goes through 11-year cycles of activity, consisting of a four-year increase in activity from solar minimum to solar maximum, and then slowly declines back to the next solar minimum," said Gates. "We reached our solar minimum approximately a year ago, so we are slowly ramping back up to an increase in solar activity that we expect to peak in late 2024 or early 2025. As the level of solar activity increases, the need to keep operators and leadership informed will only increase in importance."

After talking with the space weather experts here, another thing is clear: space weather is complicated and difficult to predict. Therefore, as the global

space mission grows, so will its space weather technicians' training and necessary expertise.

Currently, weather trainees go through a nine-month-long course focused on terrestrial weather, which only briefly touches upon space weather. If an Airman is later assigned to a space weather unit, they must perform on-the-job training to become proficient at predicting space weather.

Gates and fellow flight member Tech. Sgt. Marcos Coronel recently completed a series of planning events with their counterparts at the DoD weather schoolhouse at Keesler Air Force Base, MS, on creating a much-needed dedicated space-weather course. This roughly three-week course will provide weather Airmen assigned to a unit like the 614th Space Weather Flight an in-depth space weather primer before arriving at their new organization.

"Space weather is something that has been a bit overlooked over the years, but now with space being such a vital part of protecting our collective safety and security, the interest in it has increased," said Gates. "We are the only unit that gets to work directly with space operators and speak directly to leaders up to the four-star level about how space weather affects the mission on a day-to-day basis, so that's pretty special."



Click the logo or visit <https://www.spaceforce.mil/> to learn more about upcoming activities and developing news.





# LOUD AND CLEAR

## USAG-KA READY AND RESILIENT COUNCIL

The Commander's Ready and Resilient Council supports the health and resiliency of Soldiers, family members and civilians by implementing initiatives to address behavioral, physical, spiritual and environmental issues identified in the community.

### Join the Conversation

The USAG-KA CR2C team encourages community members to ask questions about general health, wellness and well-being. Please send your question to [kwajaleinadministration@internationalosgs.us](mailto:kwajaleinadministration@internationalosgs.us). Responses will be published in the Kwajalein Hourglass Health Connection after being reviewed by International SOS staff members. Names of respondents will not be published.

### Examples of topics CR2C can address are as follows:

- What sea creatures should I avoid?
- My wound won't heal. What should I do?
- Where can I learn First-Aid on Kwajalein?
- How do I get my worship needs met on Kwajalein?
- How does a Kwajalein medevac work?
- What will I be billed for at the Kwajalein Hospital?



### For More Information

For questions about CR2C, Kwajalein Hospital at 5-2223.

\* On USAG-KA, the CR2C program is administered by the USAG-KA Health Systems Specialist and implemented by LOGCAP IV contract and subcontract personnel. The U.S. Army does not endorse information included in the column or informational materials provided by International SOS or Amentum-DI.

## DON'T LEAVE HOME WITHOUT IT

Stand to, everyone. Command Sgt. Maj. Ismael Ortega is on the lookout for "uniformity." Active duty service members are expected to follow regulations for arrangement and presentation of uniform pieces and regalia at all times. Please be sure you are assembled and ready before all official Command photographs.

### KWAJALEIN YUK THEATER

**Saturday, June 26**

**"Yellow Rose"**

**(PG-13) 95 min.**

**Eva Noblezada, Dale Watson**

Yellow Rose is a 2019 American-Filipino musical drama film chronicling the bittersweet struggle of one Filipina's quest to be a country music star.

**Sunday, June 27**

**"Smurfs: The Lost Village"**

**(PG) 90 min.**

**Demi Lovato, Danny Pudi**

Best friends Smurfette, Brainy, Clumsy and Hefty use a special map that guides them through the Forbidden Forest, an enchanted wonderland that's filled with magical creatures. Their adventure leads them on a course to discover the biggest secret in Smurf history as they race against time and the evil wizard Gargamel (Rainn Wilson) to find a mysterious village.

**Monday, June 28**

**"Long Shot"**

**(R) 165 min.**

**Charlize Theron, Seth Rogan**

Fred Flarsky is a gifted and free-spirited journalist who has a knack for getting into trouble. Charlotte Field is one of the most influential women in the world—a smart, sophisticated and accomplished politician. When Fred unexpectedly runs into Charlotte, he soon realizes that she was his former babysitter and childhood crush. When Charlotte decides to make a run for the presidency, she impulsively hires Fred as her speechwriter—much to the dismay of her trusted advisers.

### ROI - NAMUR C-BUILDING

**Saturday, June 26**

**"Breaking In"**

**(PG-13) 88 min.**

**Sunday, June 27**

**"Thank You for Your Service"**

**(R) 109 min.**

**"Breaking In"**

**(PG-13) 88 min.**

**Gabrielle Union, Ajiona Alexus**

Shaun Russell takes her son and daughter on a weekend getaway to her late father's secluded, high-tech vacation home in the countryside, but the family soon gets an unwelcome surprise when four men break into the house to find hidden money. After managing to escape, Shaun must now figure out a way to turn the tables on the desperate thieves and save her captive children.

**Monday, June 21**

**"Thank You for Your Service"**

**(R) 109 min.**

**Miles Teller, Haley Bennett**

Sgt. Adam Schumann tries to readjust to civilian life after returning home from the war in Iraq. Fellow soldier Tausolo Aeiti must deal with the aftermath of a bombing that left him with a traumatic brain injury. Will Waller searches for normalcy after surviving several explosions, while Michael Emory must deal with the effects of a sniper's bullet to the head. With memories of the battlefield still lingering, the soldiers soon begin their long journey to physical and emotional rehabilitation.





# CYS JUNE SPOTLIGHT

U.S. ARMY GARRISON-KWAJALEIN ATOLL CHILD AND YOUTH SERVICES

Visit USAG-KA CYS on Facebook for pictures and information about our events and programs. <https://www.facebook.com/USAGKACYS/>.

## CHILD DEVELOPMENT CENTER

### Baru Classroom

Baru classroom: Fridays are Water Play Days for infants and young toddlers. Saturdays are Water Play Days for toddlers. Please send your child with water clothes, dry clothes, a towel and swim diaper (if needed).

### Bako Classroom

Tuesdays - STEAM Swim Day. Please send your child with water clothes, dry clothes, a towel and swim diaper (if needed).  
Wednesdays - STEAM Functional Fitness  
Thursdays -STEAM Library

## SCHOOL-AGE CARE

Summer Camp runs through Aug. 7, Tuesday through Saturday from 8:30 a.m. - 4:30 p.m. Register in Central Registration.



**June 29 - July 2**  
Pirates and Mermaids



**July - 6 - July 10**  
STEM Express



**July 13 - July 17**  
Sports Hall of Fame



**July 20 - July 24**  
Harry Potter



**July 27 - July 31**  
Space and Beyond



**Aug. 3 - Aug. 7**  
Mini City

## NAMO WETO YOUTH CENTER

**Tuesdays**  
Closed

**Wednesdays**  
Water Wednesday - 12:30 p.m.  
Tremendous Trivia - 4:30 p.m.

**Thursdays**  
Movies with Popcorn - 4 p.m.

**Fridays**  
Frappaccinos - 4 p.m.

**Saturdays**  
Smoothies - 3:30 p.m.  
MIT LL Beaver Works Summer Institute - RMI - 4 - 6 p.m.

**Sundays**  
MIT LL Beaver Works Summer Institute - 4 - 6 p.m.  
Surprise - 6 p.m.

## YOUTH CENTER SPECIAL EVENTS

**June 27 - Henna Tattoos, 6 - 8 p.m.**

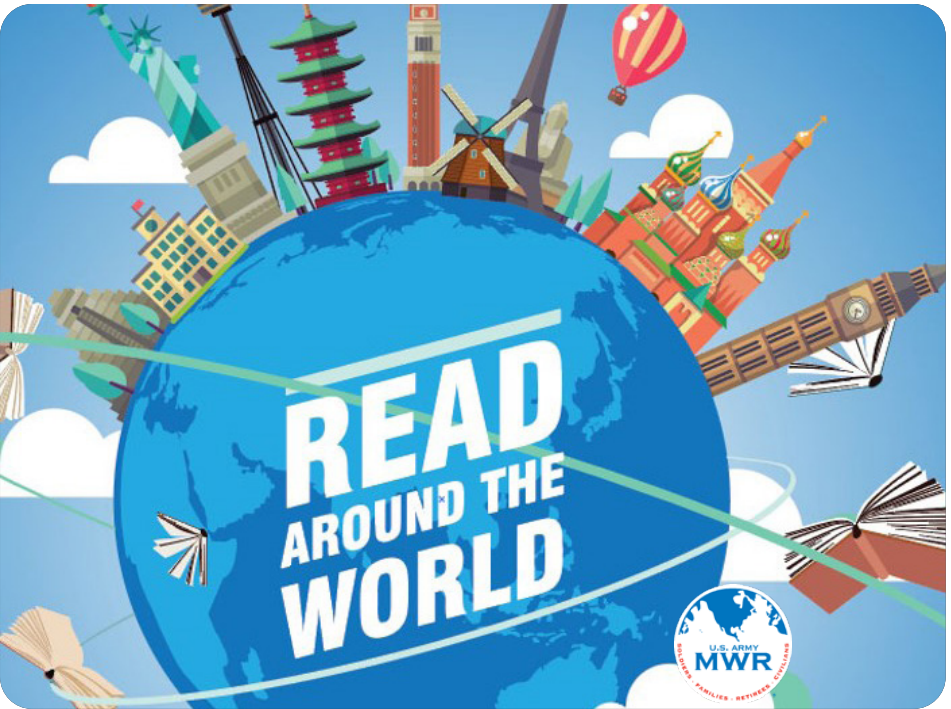
**June 30 - Water Wednesday**  
Glass Beach - 12:30 p.m.

## Special Announcement

The Commander's Challenge is June 30 – July 28 and open to anyone who has completed grades 6 – 12. All information and registration materials are located at the Namu Weto Youth Center. You must be registered with USAG-KA Child and Youth Services to participate.



*In this Wet 'N Wild program Kwajalein CYS photo, Child Development Center kids dunked their parents—during inner tube water polo training—and parent-child teams had to outrun CYS Sports Lead Sam Partain, the "shark." For more information about CYS programs, call Central Registration at 5-2158.*



## Join the reading challenge this summer at the Grace Sherwood Library

**Get ready to read around the world.** This fun activity runs through July 28 and is open to all Kwajalein children finishing grades K – 6.

Enjoy travel-themed story time and crafts every Wednesday at 10:30 a.m. and 3:30 p.m., and a reading challenge and weekly scavenger hunt for readers in grades K-6.

Enter for the chance to earn prizes in each age group (grades k-1, 2-3, 4-5, and 6) for the most books and/or pages read.

To participate, pick up reading

logs at the GSL, fill them out and return them to a library staff member.

**June 30: North America**  
**July 7: South America**  
**July 14: Africa**  
**July 21: Europe**  
**July 28: Reading celebration**

For more information, call the MWR desk at the Grace Sherwood Library at 5-3331 or 5-3332.





## MWR FITNESS CLASSES

Unless otherwise noted, all classes are held in CRC Room 7 and are subject to change without notice. All classes require an MWR fitness pass. Passes can be purchased at the MWR Desk in the Grace Sherwood Library. For more information, please call MWR at 5-3331.

### Yoga

Tuesday and Thursday at 5:30 p.m. in CRC Room 7

### Water Aerobics

Tuesday and Thursday at 9:15 a.m. at the Adult Pool

### Zumba Toning

Wednesday at 9:15 a.m. in CRC Room 7

### Zumba Dance

Wednesday and Saturday at 6 p.m.; Friday at 9:15 a.m. in CRC Room 7

### Spin

Tuesday at 6:40 p.m.; Thursday and Saturday at 5:30 a.m.



## RELIGIOUS SERVICES

Contact the Island Memorial Chapel office at 5-3505 for more information about religious services and activities on U.S. Army Garrison-Kwajalein Atoll.

### The Church of Jesus Christ of Latter-day Saints Services

Sundays at 10 a.m. in CRC Room 1. Please contact Conrad Acosta at 5-2965 for more information.

### Protestant Services

- Sundays at 8:15 a.m. in the small sanctuary and 11 a.m. in the main sanctuary.
- Kingdom Kids children's program meets during Protestant services at 8:15 a.m. and 11 a.m.

### Catholic Services

- Sundays at 9:15 a.m. in the IMC main sanctuary.
- Weekdays at 5:15 p.m. in the IMC chapel offices
- Saturdays at 5:30 p.m. in the IMC small sanctuary.
- Children's program meets Sundays during the 9:15 a.m. Catholic Mass.

### Activities

**Men's Bible Study** meets Thursdays at 5:45 p.m. in the chapel conference room.

**Ladies' Bible Study** meets 9:15 a.m. Thursdays at Qtrs. 405-B Taro. Contact Sally Bulla at 5-9804 for more information.



## BARS AND CLUBS

Contact MWR at 5-3331 for updates, activities and events about the garrison's bars and clubs.

## COUNTRY CLUB

### Birthday Bash.

Come celebrate island birthdays with MWR every third Sunday from 6 - 9 p.m. Enjoy complimentary shuttle service available from the Ocean View Club every 30 minutes from 5 - 9 p.m.

**Saturday.** Enjoy happy hour and play Uno every Saturday at 6 p.m.

### Brunch.

Country Club Brunch typically meets on the first Sunday of the month from 10:30 a.m. - 12:30 p.m., though times and dates may vary for special brunch events. Enjoy a variety of sweet and savory brunch foods. Cash only; monthly prices and menu items are subject to change. No reservation required. Seating is limited. Shuttle service available every 30 minutes. Customer pick-up is in front of the Food Court starting at 10 a.m. There is a 45-minute time limit per table.

Shuttle service will be provided from the food court to the Country Club from 10 a.m. to 12:30 p.m. Contact MWR with questions at 5-3331.

## OCEAN VIEW CLUB

**Wednesdays.** Raise your glass and toast Wednesday at happy hour from 5 - 7 p.m.

**Saturdays.** Enjoy fun activities like game nights, karaoke, theme nights and live music.

**Mondays.** Enjoy Monday meal deals on Men's Night from 5 - 7 p.m.

## SHUTTLE SERVICE

MWR offers shuttle service to and from the Country Club every 30 minutes from 5 - 8 p.m. Saturdays. For more information, contact Nikeya Lagrone at 5-9205 or 5-3331.

## OUTRIGGER CLUB

Check with MWR for meal specials and activities at the Outrigger Club by calling 5-3331.



# CLASSIFIEDS

The community wants to hear from you. Email announcements and advertisements to [kwajaleinhourglass@dyn-intl.com](mailto:kwajaleinhourglass@dyn-intl.com) Wednesday by close of business. Ads received after deadline will be published in the next issue of the Kwajalein Hourglass.

## HELP WANTED

To research and apply for government employment opportunities on U.S. Army Garrison-Kwajalein Atoll and worldwide, visit [usajobs.gov](http://usajobs.gov). Done hiring? Write to [kwajalein.hourglass@dyn-intl.com](mailto:kwajalein.hourglass@dyn-intl.com) to remove your help wanted listing.

**Truestone**, an AKIMA company, seeks a telephone operator. For more information about this position and to apply, please click the URL below to visit [https://akima.taleo.net/careersection/akimallc\\_cs/jobdetail.ftl?job=TRU01055&tz=G-MT-05%3A00&tzname=](https://akima.taleo.net/careersection/akimallc_cs/jobdetail.ftl?job=TRU01055&tz=G-MT-05%3A00&tzname=).

**Substitute teachers** wanted. Kwajalein School System seeks student-centered adults available from 8 a.m. – 3:30 p.m. to serve as substitute teachers or teacher aids. Contact Paul Uhren for more information at [uhrenp@kwajalein-school.com](mailto:uhrenp@kwajalein-school.com) or 5-3601.

**USAG-KA Child and Youth Services** seeks a Lead Preschool Teacher. Send your resume to CYS Coordinator Dr. Stephanie McCutcheon at [stephanie.mccutcheon@dyn-intl.com](mailto:stephanie.mccutcheon@dyn-intl.com).

**USAG-KA CYS** seeks a Sports and Fitness teacher. This position is unaccompanied. Requirements: Earned undergraduate degree in physical education, recreation or related field with six months' experience in a sports program or two years in a similar program with individual and team sports. Send resumes to [stephanie.mccutcheon@dyn-intl.com](mailto:stephanie.mccutcheon@dyn-intl.com) and apply online at [WRSSrecruiting.com](http://WRSSrecruiting.com), requisition ID: 2101305.

**Community Bank** seeks a part-time Banking Center Service Specialist, or teller. Submit applications and resumes to [www.dodcommunitybank.com](http://www.dodcommunitybank.com). Contact Rita Pyne at 5-2152 for more information.

**Nan Inc.** seeks a qualified quality control manager and site safety and health officer. To apply, visit [www.nanhawaii.com](http://www.nanhawaii.com) and contact Clint Ueatari or Kevin Short at 5-2632, 5-1260 or 5-2998.

**Tribalco** seeks experienced and highly motivated senior, mid- and junior network technicians to join their team. Apply via <http://www.tribalco.com/jobs.html>.

**RGNext, LLC** seeks qualified candidates to fill several open positions on Kwaj and Roi in engineering, technical and other areas. For more information and to apply, go to [www.rgnext.com](http://www.rgnext.com).

**Amentum** seeks qualified candidates for various positions. Current open positions on USAG-KA include administrative services, data analysts, education services, aviation and airfield operations, marine operations and public works, among others. To apply, contact your local HR representative.

**USAG-KA Child and Youth Services** is hiring coaches. No experience necessary. All children of head coaches play for free. Visit Central Registration or call 5-2158 in Building 356.

## ACTIVITIES AND EVENTS

**Kwajalein Ukulele Club.** The Kwajalein Ukulele Club is open to ukulele enthusiasts of all ages and skill levels. Bring your uke and join us for a strum-along each Friday in CRC room 6 from 6 – 7:30 p.m.

This club is free for everyone. Join the mailing list to receive updates and sheet music: [kwajukeclub@gmail.com](mailto:kwajukeclub@gmail.com).

**Wet and Wild Summer Sports Fun for CYS Kids.** Get ready to have some splashy fun in the sun. CYS is planning summer sports fun for kids aged 2 to 5 years. Event takes place June 30 from 5 – 5:30 p.m. Registration costs \$25. Contact Central Registration with questions at 5-2158.

**The Kwajalein Girl Scouts** are open to all school-aged K-12 girls on Kwajalein (USAGSO.org). Membership fees are \$45. Also seeking adult volunteers. For registration questions or more information contact Carrie Aljure at [whatacod@aol.com](mailto:whatacod@aol.com).

**Kwajalein Golf Association Presents the Coral Open. Sunday, July 11 and 18.** Register at the Vet's hall Saturday, July 10 at 4 p.m. or by emailing Suzanne Bussey [suzannewells711@icloud.com](mailto:suzannewells711@icloud.com) or Shelly Benkert at [shellybenkert@yahoo.com](mailto:shellybenkert@yahoo.com).

Walk-up registration is not permitted on event day. Registration fee is \$60 for members and \$80 for non-members. Tournament tee times vary between 7 a.m. and 9 a.m. Format: 18 holes per Sunday, course rules apply.

U.S. Golf Association handicapping rules apply. Carts are allowed for exempt individual players only –not for whole team. Shirts will be provided. Enjoy hotdogs and brats on both tournament days. Clubhouse cash bar is be open 7 a.m. to 5 p.m. Water and select adult beverages will be provided.

Contact Suzanne Bussey [suzannewells711@icloud.com](mailto:suzannewells711@icloud.com) or Shelly Benkert at [shellybenkert@yahoo.com](mailto:shellybenkert@yahoo.com) for more information or to register.

**Family Movie Night.** June 27 at 7 p.m. in the main sanctuary at the Island Memorial Chapel. Bring your friends, drinks, snacks and enjoy fresh popcorn provided by the IMC community to watch "Small Group."

**Summer Softball Tournament.** Team Registration is open until July 3. Tournament dates are July 13 through Aug. 4. Teams require a minimum of eight players. Only 16 teams will be eligible to play. Cost of registration is \$50. Register and pay participation fees in the Grace Sherwood Library, Bldg. 805. Questions, call 5-3331.

**Inner Tube Water Polo Tournament.** Tournaments run through June 29. Cost of registration is \$50. Space is limited. Register and pay participation fees in the Grace Sherwood Library, Bldg. 805. Questions, call 5-3331.

**Roi Sand Volleyball Tournament.** Sunday, July 4 at 4 p.m. Register your three-person team with Roi MWR by June 30. Team registration fee is \$15. Contact Rick at Roi MWR at 5-6580.

## HOURS OF OPERATION

**The George Seitz Elementary School Office** will be open Tuesday through Saturday from 8 a.m. to 4 p.m. and closed during lunch until August. The Kwajalein High School office will be closed until Aug. 6. Call 5-3601 or email [uhrenp@kwajaleinschool.com](mailto:uhrenp@kwajaleinschool.com) with school questions.

**Self Help** is located in Bldg. 1791. Hours of operation are Monday, Wednesday and Friday - 9:30 a.m. - 6 p.m. Visit Self Help to pick up tools to complete a number of household maintenance and upkeep projects.

**Kwajalein Furniture Warehouse.** To schedule deliveries and pickups of Family Housing or BQ furniture please call the Army Housing Office at 5-3450.

**Small Boat Marina** Summer 2021 Hours of Operation are now through Oct. 31 from 8 a.m. – 6:30 p.m. Questions? Call the Small Boat Marina at 5-3643.

## NOTICES

**Alcoholics Anonymous** open meetings are Tuesdays at 6:30 p.m. in the REB, room 213.

**Ongoing Smoking and Tobacco Cessation.** Please call EAP at 5-5362 or make an appointment with a physician.

**Tobacco Use on USAG-KA.** Smoking permitted only in designated smoking areas. All smoking and cigarette butt receptacles must be at least 50 feet from entrance of facilities. USAG-KA Policy Memorandum 600-8 sets forth specific policies designed for the protection from the negative impact of tobacco use. Smoking cessation programs are available. Contact Mary Beth Dawicki at 5-5362 or [Marybeth.Dawicki@international-sosgs.us](mailto:Marybeth.Dawicki@international-sosgs.us).

**Register with the Grace Sherwood Library.** The new card catalog system is ready and Grace Sherwood Library staff need your help. Please visit the library to sign up for an account to begin checking out books. Information needed includes the following: ID badge, quarters number, mailbox number and email address. Individual and family accounts are available. Contact the Grace Sherwood Library with questions at 5-3331.

**PCS'ing with a Pet.** Depending on your final destination please notify vet services to discuss travel planning for your pet(s) during the recommended timeframes below: CONUS, 45+ days prior to PCS; Honolulu and Guam, three to six months prior to PCS; and other countries, six months or more prior to PCS. If you plan to PCS in the next six months, contact Kwajalein Veterinary Services at 5-2017 to

ensure your pet is up to date on annual diagnostics and vaccinations. For more, email the Kwajalein vet tech at [kwajaleinveterinaryclinic@internationalsosgs.us](mailto:kwajaleinveterinaryclinic@internationalsosgs.us).

**Electric bikes** are not allowed on the garrison per USAG-KA Regulation 56-4. You are authorized use of the bike on USAG-KA If you disconnect the motor. For more information, contact the PMO at 5-3530.

**Quarantine Delivery Schedule.** Show newcomers you care with a bag of goods or treats one of two quarantine drop-off locations. The new time for PX drop-offs is 2 p.m. on Mondays. There is no change to the Thursday Surfway delivery schedule. If you would like to send a care package or goods to a recipient in quarantine, please do the following: Package your goods securely, label goods with the name of the recipient and bring goods to the delivery team waiting at the PX and Surfway drop-off sites no later than 15 minutes before scheduled departure times. For more information, contact Amentum-DI Operations Manager Randal Navarre at 5-0773.

## TRAINING

**Building Manager Evacuation Coordinator Training** (Required for all managers by AR 420-1). Kwajalein training occurs on the first and third Wednesdays of each month beginning at 10 a.m. in the Religious Education Building. Roi-Namur training occurs on the second Wednesday each month at 9:30 a.m. at the C-building. Call 5-3364 to register.

## COUNSELING SERVICES

**Chapel Counseling Services.** The IMC chaplains are available for appointments on Roi-Namur and Kwajalein. Contact the Chapel office at 5-3505 to schedule a meeting. Discussions are kept private. Confidentiality belongs with the client.

**Counseling Available.** Schedule an appointment with the Employee Assistance Program by calling Mary Beth Dawicki at 5-5235 or emailing [marybeth.dawicki@internationalsosgs.us](mailto:marybeth.dawicki@internationalsosgs.us). Information shared in appointments is confidential. As an alternative to in-person meetings, phone consultation or virtual meetings are available utilizing a HIPAA compliant platform. Call 5-5362 for more information.

## ENVIRONMENTAL NOTICES

**Recycle Safely.** Please ensure that all aluminum cans are separated from household trash to prevent damage to the island incinerator. Doing your part keeps our island clean. For more information, contact DI Environmental at 5-1134.



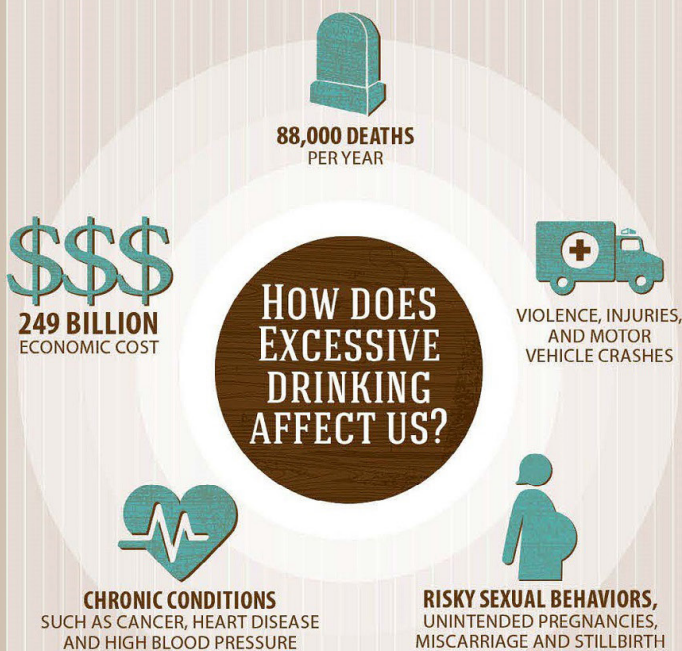


## WHAT IS EXCESSIVE ALCOHOL USE?



## WHAT IS CONSIDERED A "DRINK"?

U.S. STANDARD DRINK SIZES



Your questions about alcohol and health deserve an answer. For more information, contact the Kwajalein Hospital at 5-2223. To speak with the Employee Assistance Program counselor or to make an appointment, call 5-5362.



## USAG-KA DINING GUIDE

### ISLAND DINING FACILITIES

#### CAPT. LOUIS. S. ZAMPERINI CAFETERIA - KWAJALEIN (5-3425)

**TUESDAYS - SATURDAYS\***  
5:30 - 8 a.m.  
11 a.m. - 1 p.m.  
4:30 - 7 p.m.

**SUNDAYS AND HOLIDAYS\***  
6:30 a.m. - 9:30 a.m.  
11 a.m. - 1 p.m.  
4:30 - 7 p.m.

**MONDAYS\***  
6 - 9 a.m.  
11 a.m. - 1 p.m.  
4:30 - 7 p.m.

\*Families are welcome to dine at the Zamperini Cafeteria on Tuesdays, Thursdays, Sundays and Mondays.

Want to receive a daily copy of the menu? Contact Asia Williams at [asia.williams@dyn-intl.com](mailto:asia.williams@dyn-intl.com) to be added to the weekly emailed menu.

#### CAFE ROI - ROI-NAMUR (5-6535)

**TUESDAYS - SATURDAYS**  
5:30 - 8 a.m.  
10:45 a.m. - 12:30 p.m.  
5 - 6:45 p.m.

**SUNDAYS AND HOLIDAYS**  
7 - 9 a.m.  
10:45 a.m. - 12:30 p.m.  
5 - 6:45 p.m.

**MONDAYS**  
6 - 8:30 a.m.  
10:45 a.m. - 12:30 p.m.  
5 - 6:45 p.m.

### DINING DOWNTOWN

#### SUNRISE BAKERY (5-3445)

Tues - Thursday  
6 a.m. - 2 p.m.

#### SUNRISE BAKERY PIZZA KITCHEN (5-3445)

Friday, Saturday and Sunday,  
5 - 9 p.m.

Monday, 5 - 9 p.m.

Don't forget about the late-night menu of rotating specials at the Roi-Namur Outrigger Club and Ocean View Club. For more information, please see the "Bars and Clubs" page.

### AAFES - KWAJALEIN DINING LOCATIONS

#### AMERICAN EATERY

Located at the Kwajalein Dock Security Checkpoint  
(5-1605)

**Sunday** - closed  
**Monday** - closed  
**Tuesday - Saturday,**  
8 a.m. - 6 p.m.

#### ANTHONY'S PIZZA

Located at the AAFES Food Court  
(5-2735)

**Sunday,** 11 a.m. - 6 p.m.  
**Monday - Friday,**  
11 a.m. - 7 p.m.  
**Saturday,** 11 a.m. - 8 p.m.

#### BURGER KING

Located at the AAFES Food Court  
(5-3402)

**Sunday,** 11 a.m. - 6 p.m.  
**Monday - Friday,**  
11 a.m. - 7 p.m.  
**Saturday,** 11 a.m. - 8 p.m.

#### SUBWAY

Located at the AAFES Food Court  
(5-3402)

**Sunday,** 11 a.m. - 6 p.m.  
**Monday,** 11 a.m. - 7 p.m.  
**Tuesday,** 10 a.m. - 7 p.m.  
**Wednesday,** 8 a.m. - 7 p.m.  
**Thursday,** 10 a.m. - 7 p.m.  
**Friday,** 8 a.m. - 7 p.m.  
**Saturday,** 10 a.m. - 7 p.m.



CELEBRATE JUNE WITH  
THE ARMY FAMILY

PTSD TREATMENT  
WORKS

Why wait?

www.ptsd.va.gov

PTSD AWARENESS MONTH



SAFETY MONTH



DOD PRIDE MONTH



SMOKE ALARMS PROVIDE A  
SOUND YOU CAN LIVE WITH

Test your household smoke alarms at least once per month. For your safety, never remove or disable smoke alarms. If an alarm "chirps," it is a warning that the battery is low and should be replaced immediately. Contact the Public Works Service Desk at 5-3550 if the smoke alarm is not functioning properly. Call the Kwajalein Fire Prevention Office at 5-2137 with questions about fire safety and smoke alarms on Kwajalein.



Construction at  
Rich Theater

U.S. Naval Mobile Construction Battalion 4, Detail Marshall Islands will continue work at the theater foundation from 7:30 a.m. to 5 p.m. Tuesday through Saturday. Please adhere to the caution tape and safety barriers around the site and keep the area clear. Special thanks to NMCB 4 for rebuilding a Kwajalein community landmark. Please contact Deirdre Wyatt-Pope at 5-1442 with any questions.



All routine service order requests for bachelor quarters and Army Family Housing are to be reported through ArMA. Reporting jobs using ArMA provides residents with the ability to send pictures and have permanent records of their issues. Register for your account and submit tickets at <https://www.army-maintenance.com>

IMPORTANT: To report emergency service order requests, call 5-3550. Examples of emergency SORs include major water leaks, loss of all AC, no operational toilets, inoperable appliances, plumbing, smoke detectors or door locks. For ArMA questions, contact Scott Hill at 5-0133 or [michael.s.hill86.civ@mail.mil](mailto:michael.s.hill86.civ@mail.mil)

Personally Identifiable  
Information (PII)

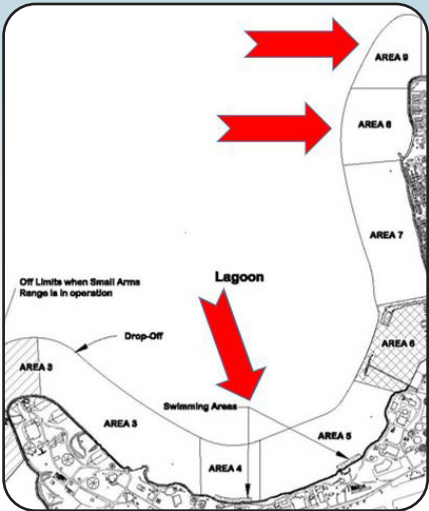
is considered personal critical information, and when disclosed via open sources, or associated with the Army, can make you vulnerable to adversary collection.



Like and share @USArmyOPSEC

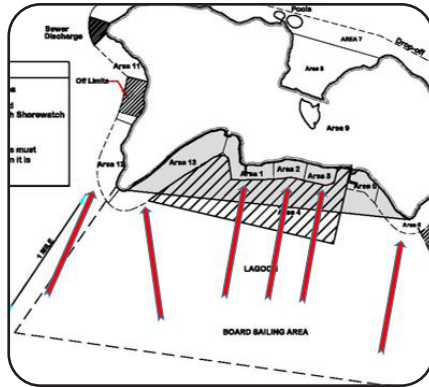
SWIM SAFETY

Check out the maps below to reacquaint yourself with where it is okay to swim around Kwajalein and Roi-Namur. Forward any questions to USAG-KA Safety at 5-1442 or FMWR at 5-3400.



KWAJALEIN

- The highlighted areas are the only unrestricted swimming areas at Kwajalein (Coral Sands, Camp Hamilton, Emon Beach and North Point).
- Flotation device recommended 100 feet from shore and required more than 300 feet from shore.
- Buddy system or shore watch is required.



ROI-NAMUR

- The highlighted areas are the only unrestricted swimming areas at Roi-Namur (Areas 1, 2, 3, 6, 12 and 13).
- Flotation device recommended 100 feet from shore and required more than 300 feet from shore.
- Buddy system or shore watch is required.





# FLIGHT INFORMATION

## UNITED AIRLINES FLIGHTS

United Airlines has confirmed reinstatement of the full Island Hopper flight schedule. Please note that the travel ban for the Republic of the Marshall Islands is still in effect and all flights are subject to change.

For more information, please contact United Airlines reservations at 1-800-864-8331.

## WEEKLY JULY-OCTOBER

Check-In Times  
UA 155 - 3:30 - 4:45 p.m.  
UA 154 - 10:45 - 11:15 a.m.

## WEEKLY JULY-OCTOBER FLIGHTS

Mondays- UA 155 - (HNL)  
Tuesdays- UA 154 - (GUM)

## GUAM CUSTOMS AND QUARANTINE AGENCY FORM IS NOW ELECTRONIC

The Guam Customs and Quarantine Agency form has transitioned to an Electronic Declaration Form. All passengers and crew arriving and processing into the Guam International Airport Main Terminal will fill out the EDF on their mobile devices or desktop computers, 72 hours prior to their arrival into Guam.

United encourages everyone to take advantage of the 3-day eligibility window prior to boarding for a completely touchless entry process with Guam Customs. Links are as follows:

Mobile device link: <https://traveller.guamedf.landing.cards>

Desktop computer: <https://guamedf.landing.cards>

The EDF kiosks are accessible in Guam airport baggage claim area for passenger's convenience.

## ATI FLIGHTS

ATI flights now occur on a twice weekly basis. Additional flights are for cargo movement. Check with your ATI flight representative to confirm check-in and flight departure times.

## What does this mean for the community?

- Guidelines for incoming passengers remain the same
- Outbound passengers will have more opportunities to depart
- Travel remains official for duty only. Please note the RMI travel ban is still in effect

## OUTBOUND ATI SCREENING PROCESS

The ATI medical screening process has changed.

- You must visit the hospital to complete your medical clearance on the last business day before your flight.
- Monday and Tuesday departures will be screened Saturday from 8 a.m. - 1 p.m.

For more information, contact the Kwajalein Hospital at 5-2223.

# RMI TRAVEL BAN APPLIES THROUGH JUNE 30, 2021

## RMI COVID-19 TRAVEL ADVISORY & RESTRICTIONS ISSUANCE 26: MAY 31, 2021

An extension of the total suspension of international travelers coming into the RMI via air travel will continue until June 30, 2021.

For more information about the Republic of the Marshall Islands Issuance 25, please contact the Commander's Hotline at 5-1098 or the USAG-KA Host Nation Office at 5-5235.

# OUTBOUND COVID TEST, FLIGHT REQUIREMENTS

## FLIGHT REQUIREMENTS

No Covid-19 flight test is required if flying on the ATI or United Airlines if you are flying with official government orders.

- All other UA passengers must have a negative Covid-19 test one to three days before traveling.
- This testing requirement is mandated by the Centers for Disease Control and Prevention.

## GETTING YOUR COVID-19 TEST

To schedule a test on Kwajalein, call the Kwajalein Hospital at 5-2224.

- Tests cost \$125.
- Please bring a copy of your UA flight itinerary to testing.

The Kwajalein Hospital is not a trusted partner for Hawaii. All travelers extending stay in Hawaii must verify safe quarantine requirements with the State of Hawaii's Safe Travels site. All destinations and hotels have their own Covid testing and documentation requirements.

It is the responsibility of the traveler to verify requirements before travel.

## OUTBOUND UNITED AIRLINES PASSENGERS WITHOUT GOVERNMENT ORDERS

Passengers will visit the Kwajalein Hospital on the last hospital business day before their flight departs.

- Testing hours: 9 - 11 a.m.
- Results pick-up time is 4 p.m. on the day of testing. The Kwajalein Hospital closes for the weekend at 4:30 p.m. No test results will be given after 4 p.m.

These CDC requirements do not change or impact the state of Hawaii's testing requirement or quarantine procedure.

NOTE: These documentation requirements do not apply to customers flying from U.S. territories such as Guam to the mainland.

# UNITED AIRLINES DEPARTURE POLICIES

Customers at Kwajalein's airport boarding United Airlines flights need to present the items described below:

Customers with a negative test result must present written or electronic documentation of the following:

- Customer name.** (The customer name and any other personal identifiers must match the customer ID).
- Date the test was taken.** Test must be taken within three calendar days of flight.
- Type of test.** The CDC rule requires a viral test, which means a molecular COVID-19 test (such as PCR or LAMP) or antigen test.
- Results must state "negative,"** "SARS-CoV-2 RNA not detected" or "SARS-CoV-2 antigen not detected." A test marked "invalid" is not acceptable

Customers who have previously tested positive must present written or electronic documentation, dated within the last 90 days, of recovery from COVID-19 after previous infection. These items must be submitted in the form of a positive viral test result and a letter on official letterhead that contains the name, address and phone number of a licensed healthcare provider or public health official stating that the passenger has been cleared for travel.

## All United customers must also comply with the following requirements:

- Presentation of a disclosure and attestation form. The form can be found on the CDC website and will also be available at the departure airport. Customers are encouraged to print and complete the form prior to arriving at the airport.
- Check-In. All international originating customers will be required to check-in with a Customer Service representative to verify digital or paper documentation. This mirrors the process we've set up within the U.S. for many international destinations.
- Failure to Comply Will Result in Boarding Denied. Customers who do not show proof of a test or refuse to test prior to travel will be denied boarding. Denied boarding compensation will not be paid. Customers in this situation shall be offered a refund or rebooked for a later date at no additional charge.



# UXO REMINDER

## PUBLIC SAFETY ANNOUNCEMENT

**Remember the three Rs of UXO:** Recognize an item as possible Unexploded Ordnance. Retreat from the area of the UXO. Report suspected UXO immediately by notifying EOD (5-1433) or CPS (5-4445).

Provide the following information: Location (building #, GPS, landmarks, etc.); Size (compared to common items - football, scuba cylinder, etc.). Treat UXO like you would treat dangerous sea creatures.

Look but do not touch. For a detailed refresher, please attend the Island Orientation Briefing on the fourth Wednesday of every month.

Kemejmej R ko 3. Recognize (kile) juon kwopej bajjok emaron Bokutan ak kein kabokkolok (UXO). Retreat (Jenliklik) bed ettolok im jab kepaak UXO eo. Report (Ripoot e) boktun ak kein kabokklok eo ien eo emokajtata non EOD ilo nomba kein (5-1433) ak CPS (5-4445). Ken melele kein: la eo (nomba in ijo, GPS, kakolle in ijo, etc.); Jonan (jonan e ibben jet kain mweik - football, taan in turan, etc.). Tiljek kon UXO kein einwot am kojparok menin mour in lojet ko rekauwotata. Kalimjek wot jab jibwe.



Non bar kakemejmej eok, eokwe jouj im koba lok ilo Island Orientation allon otemjej.

# USAG-KA WEATHER WATCH

## RTS WEATHER STATION STAFF

**WEATHER DISCUSSION:** Dry-season weather reigns supreme as the subtropical ridge to the north continues to dominate our weather. Mostly clear skies with moderate east-northeasterly trade winds will persist, but a developing disturbance will help increase rain chances and cloud over this weekend. A emerging Tropical Upper Tropospheric Trough to the west of Hawaii will approach the Kwajalein Atoll by this weekend. As the system picks up steam, a surface trough will develop in response to this TUTT as it nears the atoll.

There is some uncertainty with regards to the strength of this system due to the strong influence of the subtropical ridge that is trying to decouple the TUTT from the surface trough. While it remains likely that the system will be somewhat hampered by the suppressive environment, over time this feature will begin to overcome this less than ideal conditions.

As the system becomes more organized, surges in shower activity will become more evident across much of the region late this weekend. After this weekend, shower activity will clear as the subtropical ridge re-enforces the dry-season pattern over the region once again.

**SATURDAY:** Mostly sunny with isolated showers. Winds ENE at 11-16 knots.

**SUNDAY:** Mostly cloudy with widely scattered showers developing late, otherwise mostly clear with isolated showers. Winds ENE at 10-15 knots with occasional higher gusts in/near showers.

**MONDAY:** Mostly cloudy to cloudy with widely scattered showers, showers may become scattered at times and a stray thunderstorm is possible. Winds ENE-ESE at 9-14 knots with higher gusts in/near showers.

**TUESDAY INTO NEXT WEEK:** Below average precipitation is expected as the Tropical Upper Tropospheric Trough exits the region. Mostly clear skies with moderate East-Northeasterly will take hold for the remainder of the forecast period. Aperiodic surges of shower activity are possible throughout next week but they are not expected to be as nearly impactful as this weekend's event will be. Without any distinct features to track at the present moment, little can be said about the long-term outlook at this time.

SUN-MOON-TIDES				
	SUNRISE SUNSET	MOONRISE MOONSET	HIGH TIDE	LOW TIDE
SUNDAY	6:33 a.m. 7:11 p.m.	9:43 p.m. 8:42 a.m.	5:47 a.m. 4.8' 6:18 p.m. 3.4'	12:20 p.m. -0.4' -----
MONDAY	6:33 a.m. 7:11 p.m.	10:33 p.m. 9:41 a.m.	6:29 a.m. 4.5' 7:02 p.m. 3.2'	12:04 a.m. 0.0' 1:03 p.m. -0.1'
TUESDAY	6:33 a.m. 7:12 p.m.	11:20 p.m. 10:36 a.m.	7:12 a.m. 4.2' 7:47 p.m. 3.0'	12:47 a.m. 0.3' 1:46 p.m. 0.2'
WEDNESDAY	6:34 a.m. 7:12 p.m.	----- 11:27 a.m.	7:55 a.m. 3.8' 8:38 p.m. 2.9'	1:32 a.m. 0.6' 2:30 p.m. 0.5'
THURSDAY	6:34 a.m. 7:12 p.m.	12:01 a.m. 12:14 p.m.	8:42 a.m. 3.4' 9:38 p.m. 2.8'	2:22 a.m. 1.0' 3:19 p.m. 0.8'
FRIDAY	6:34 a.m. 7:12 p.m.	12:40 a.m. 12:59 p.m.	9:38 a.m. 3.0' 10:51 p.m. 2.8'	3:25 a.m. 1.2' 4:15 p.m. 1.0'
JULY 3	6:34 a.m. 7:12 p.m.	1:19 a.m. 1:44 p.m.	10:49 a.m. 2.7' -----	4:49 a.m. 1.4' 5:20 p.m. 1.0'



Click the logo to visit  
RTS Weather online.



## USAG-KA Independence Day Celebration

USAG-KA MWR invites you to celebrate July 4 with special events on Kwajalein and Roi

### ROI-NAMUR EVENTS

2 – 10 p.m. at the Roi-Namur Pool

**Independence Day Blowout**  
Join us by the pool for food, fun and beverages, with Outrigger grill food delivery, a poolside bar and a live DJ.

2 p.m. - Inflatable obstacle course opens  
4 p.m. - Sand Volleyball tournament  
6 p.m. - Cannonball Competition

For more information, please call  
Roi MWR at 5-6580

### KWAJALEIN EVENTS

5 - 10 p.m. at Emon Beach

**MWR Beach Party**  
Emon Beach  
5 – 10 p.m.  
Eat, drink, be patriotic and come celebrate with us. Enjoy a pie-eating contest, limbo contest, door prizes, paddle boats, bounce houses, games, vendor sales, a live DJ and more.

**Bike Parade**  
North side of Namo Weto Youth Center  
4:30 p.m. - Decorations available at the Namo Weto Youth Center  
5 p.m. - Bike Parade begins  
Decorate your bike and join the parade to kick off the Kwajalein Independence Day Beach Bash. The bike parade begins on the north side of the Namo-Weto Youth Center

**Outdoor Movie Night: JAWS**  
Emon Beach  
8 p.m.  
Bring Your Floaties to Emon Beach and join the community in the lagoon for a special outdoor movie night event—if you dare.

For more information, please call  
Kwajalein MWR at 5-3331



## It's not unusual: It's PTSD.

Posttraumatic Stress Disorder is a common ailment that exacts a heavy toll. You can make a difference. Help those living with PTSD by learning about its signs, symptoms and the many support and treatment options available. Do not wait to offer your help if it's needed—or to get help if you need it.

# BUSTING PTSD MYTHS

**Fact:** While not everyone who experiences trauma will develop Posttraumatic Stress Disorder, it is a common invisible wound.



**1 in 5**

active duty service members show signs of a psychological health concern



**7 to 8%**

of people will experience PTSD at some point in their lives



**10 to 14%**

of service members who served in Iraq and/or Afghanistan have developed PTSD

## 5 MYTHS & FACTS ABOUT PTSD

Seeking help is a sign of strength, but the myths about PTSD can discourage service members from taking the first step.

**MYTH:** PTSD is always combat-related

**FACT:**

PTSD can be caused by many types of traumatic experiences like house fires, car accidents and sexual assaults.

**MYTH:** Service members with PTSD all have the same symptoms

**FACT:**

Everybody experiences PTSD differently. Symptoms vary in intensity and can include nightmares, flashbacks and trouble concentrating.

**MYTH:** Only service members experience PTSD

**FACT:**

Anyone who faces a traumatic event can develop PTSD. It can affect people of any age, gender, race or income level.

**MYTH:** Service members can never recover from PTSD

**FACT:**

PTSD is treatable and getting help early can significantly improve your symptoms. PTSD can recur, but treatment can make you feel in control and give you tools to cope.



**MYTH:** Getting help for PTSD will hurt my ability to get or maintain a security clearance

**FACT:**

Most service members who seek help from a psychological health professional are able to get or maintain a clearance.

## SEEK CARE

PTSD symptoms may not appear until months or years later<sup>1</sup>. If you have gone through trauma and are experiencing anger, trouble sleeping, nightmares, intrusive memories, sadness or other concerns, seek care as these may be signs of PTSD. Contact a health care provider to assess your symptoms and discuss treatment options.

## WANT TO LEARN MORE?

### Psychological Health Resource Center

Call/Chat with a health resource consultant 24/7 at 866-966-1020

### Military Crisis Line

Call 800-273-8255 and press 1, or chat online at [veteranscrisisline.net/get-help/chat](https://veteranscrisisline.net/get-help/chat) for confidential help

### National Center for PTSD

Visit [ptsd.va.gov](https://ptsd.va.gov) for PTSD treatment and care options

### Connect with Us on Social Media

[facebook.com/realwarriors](https://facebook.com/realwarriors)  
[twitter.com/realwarriors](https://twitter.com/realwarriors)

REAL WARRIORS • REAL BATTLES  
**REAL STRENGTH**



Military Health System  
[health.mil](https://health.mil)

<sup>1</sup> [https://www.ptsd.va.gov/understand/what/ptsd\\_basics.asp](https://www.ptsd.va.gov/understand/what/ptsd_basics.asp)



## NOTICE OF AVAILABILITY FINAL ENVIRONMENTAL STUDY ON GROUND BASED STRATEGIC DETERRENT ICBM RECAPITALIZATION TEST PROGRAM

The Department of the Air Force announces the availability of the Final Environmental Assessment/Overseas Environmental Assessment for the Ground Based Strategic Deterrent Test Program and the program's Mitigated Finding of No Significant Impact. The analysis can be found at <http://gbsdtesteaofa.govsupport.us>

The GBSD program would modernize the aging U.S. land-based intercontinental ballistic missile Minuteman III system.

The Air Force plans to modernize the land-based leg of the nuclear triad, recapitalizing its ICBM fleet while upgrading the weapon system technology, supporting infrastructure, and command and control functions. Test program-related actions would occur primarily at Hill Air Force Base, Utah, and at Vandenberg Space Force Base, California. Such tests would include conducting missile launches from Vandenberg Space Force Base with flights over the Pacific Ocean in the Western Test Range. Additional test support activities would occur at U.S. Army Dugway Proving Ground, Utah. The environmental assessment also includes analysis of the proposed GBSD Formal Training Unit/Schoolhouse at Vandenberg Space Force Base. The GBSD and Minuteman III test demonstrations are proposed to occur at U.S. Army Garrison-Kwajalein Atoll and within the Republic of the Marshall Islands territorial waters. The analysis of overseas environmental impacts is also included in the assessment. Test activities would comply with the U.S. Army Kwajalein Atoll environmental standards.

For more information visit:  
<http://gbsdtesteaofa.govsupport.us>  
or contact Air Force Global Strike  
Command at  
[AFGSC.PAWorkflow@us.af.mil](mailto:AFGSC.PAWorkflow@us.af.mil)

## KOJJELA KE EWÖR Air Force ej kobjelaik ro reitok limo ke emoj an pojkek ripoot in katak eo rar kommane ikkijen pirokiram eo aer naetan Ground Base Strategic Deterrent ICBM recapitalisation Test Program ak Pirokiram GBSD

Ra eo an Air Force ej kobjelaik ke epojak ripoot kaal eo aer ikkijen aer kar etale ta ko remaroñ walok im jelet ak jab jelete jukjuk im bed eo im belaak ko belakid. Katak kain repojak ñon am liñiri ilo ripoot eo naetan: Final Environmental Assessment/Overseas Environmental Assessment for the Ground Based Strategic Deterrent Test Program and the program's Mitigated Finding of No Significant Impact. Komaroñ etale katak in ilo am etal online ñon: <http://gbsdtesteaofa.govsupport.us>

Pirokiram in GBSD ej kottopar eo an bwe en kokaal kain jermal in nuclear triad ko aer, ko im rj bed ion ene, kejenolak im kolaplak jaan ko ñon aer kolla wonaan kokaali wa ko naetan ICBM fleet im kokaal kain tarinae ko, im ko rej jibañ jermal kain an GBSD, koba jermal ko naetan command im control.

Jermal in teeje pirokiram kain renaaj komman ilo Utah ilo jikin eo naetan Hill Air Force Base, im ilo Vandenberg Space Force Base ilo California. Teej kain renaaj koba kakelak missile ko jen Vandenberg Space Force Base ñon malo in Pacific in ilo jikin eo emoj aer jiton naetan Western Test Range. Enaaj bar wor teej ko renaaj komman jen jikin eo ilo Utah naetan U.S. Army Dugway Proving Ground. Ripoot in katak eo ikkien ta ko remaroñ ak remaoñ jab walok ñon jukjuk im bed eo ej bar katabuuj ak kobaik melele ko ikkijen ijo komelmel kein renaaj komman ilo mon jikuul eo ak ijo emoj aer kotamene naetan GBSD Formal Training Unit/Schoolhouse at Vandenberg Space Force Base. Kamelmel ko naetan GBSD im Minuteman III rej karok bwe ren kab komman ilo U.S. Army Garrison-Kwajalein Atoll ilowan malo eo an Majol ak Republic of the Marshall Islands. Ripoot eo ikkijen ta ko remaron ak remaron jab walok ñon belak ko belakid eo ñon lal ko ilikin Amerika ej borainwot mwein koppan ripoot ak katak in emoj kepoj. Teej kein renaaj lore kakien ko ikkijen kojparok ko ñon jukjuk im bed eo im belaak ko belaakin U.S. Army Kwajalein Atoll.

Non melele ko relaplak etal online non:  
<http://gbsdtesteaofa.govsupport.us>  
ak ñejab, kebat Air Force Global Strike  
Command ilo am email lak  
[AFGSC.PAWorkflow@us.af.mil](mailto:AFGSC.PAWorkflow@us.af.mil)



**Overpack containers** may be utilized as secondary containment for hazardous materials, wastes and petroleum products. This is acceptable if the storage area is protected and clearly marked; if safety data sheets are readily available; and if containers are properly labeled.

Overpack container ko remaron in bar jermal nan kakonkon ak kejbarok HMWPP elane ijoko jikier rebole-meir im alikar kin kokalle ko, safety data sheets ko rej aikuj in alikar im melele nan read, im label ko ren eddeb im alikar ilo container ko.

**E-Wareness is a weekly product of Amentum Environmental. Contact the team at 5-1134. Elane elon am kajitok, jouj im kurlok DI Environmental ilo 5-1134.**



## 2020 Water Quality Report Is Now Available

The **2020 Water Quality Report** is now available to all USAKA residents with important information about drinking water at USAG-KA. Contact Environmental at 5-1134 for information.

Available at Kwajalein and Roi-Namur:

- Post Offices
- Libraries
- Air Terminals
- Dock Security Check Points

2020 Water Quality Report ebojak non aolep armij ro ilo USAKA lale ej kwalok kin melele ko raurok kin dren in idrak eo ion USAG-KA

Ebojak ilo Kwajalein im Roi-Namur:

- Post Offices
- Libraries
- Air Terminals
- Dock Security Check Points





# U.S. ARMY GARRISON-KWAJALEIN ATOLL CHANGE OF COMMAND



June 30, 2021  
9 a.m. at the Fixed Wing Hangar, Bldg. 898  
Bucholz Army Airfield





## HOW OUR NEWSPAPER GOT ITS NAME

THE SHOULDER SLEEVE INSIGNIA OF THE 7TH INFANTRY DIVISION CONSISTS OF TWO BLACK, EQUILATERAL TRIANGLES PLACED VERTICALLY ON A RED CIRCULAR DISC GIVING IT AN HOURGLASS SHAPE.

THE HOURGLASS OF THE INSIGNIA WAS CONSEQUENTLY USED IN THE TITLE OF THE ISLAND NEWSPAPER, THE KWAJALEIN HOURGLASS.

SEND ANNOUNCEMENTS, COMMUNITY UPDATES AND EVENT FLIERS TO [KWAJALEINHOURGLASS@DYN-INTL.COM](mailto:KWAJALEINHOURGLASS@DYN-INTL.COM) WEDNESDAYS BY 5 P.M.

FOR MORE INFORMATION, CONTACT USAG-KA PUBLIC AFFAIRS AT 5-4848.

# #SALUTETHE7TH



**CLICK THE 7TH INFANTRY DIVISION LOGO TO CHECK OUT PHOTOS FROM THE KWAJALEIN HOURGLASS ONLINE.**