

THE KWAJALEIN HOURGLASS

THIS WEEK

CHAPEL ACHIEVES
75 YEARS OF SERVICE ON KWAJ 2

MARINE CREW
HAUL LARGE BARGE TO DOCK 5

OP FLINTLOCK
AFTER THE BATTLE 7



JAER ELISHA, A MARINE DEPARTMENT CREWMAN, HANDLES A DOCK LINE IN A 2.5-HOUR OPERATION JAN. 30 TO BRING A GARRISON BARGE INTO DRY DOCK.

PHOTO: JORDAN VINSON

ISLAND MEMORIAL CHAPEL CELEBRATES 75 YEARS ON KWAJALEIN



SMDC Historical Office

COMMUNITY CONNECTION

By Bill Remick

Soon after the assault on Kwajalein was finished, regular religious services began on the island. Initially, these were improvised affairs, but as permanent structures went up some were converted to part-time use for services.

By the summer of 1944, the Richardson Theater was completed, and many of the services were held there. As many as 20 services on Sundays were held at different locations around the island. Near the end of 1944, the Marine Air Wing commander asked the chaplains to see about building a dedicated structure for religious services. The chaplains got together with Lt. Daniel Warner of the 893rd Aviation Engineers to discuss designs for a chapel. In a Dec. 6, 1944 meeting with the island commander, Gen. Ogden Ross (yes, the Army actually ran the island at that time, too) the chaplains were offered a couple of small quonset huts for a chapel. Warner offered to design a better and larger structure out of wood. That evening he completed the design, and crews broke ground two days later.

Construction of the chapel was an all-services project, and the dedication was held on Feb. 11, 1945. It has been in service since that time with only minor interruptions.

The chapel has undergone numerous renovations, with one so large it resulted in, essentially, a whole new building at completion. A short article in the Kwajalein Post in December 1953 mentions renovations to the chapel, but did not spell them out. The chapel has a very large eave overhang, and the outside edge of the eave was originally supported by small logs. These were replaced

by dimensional lumber in about 1959.

As built, there were interior pillars that bore the weight of the roof, and the roof was strengthened with collar ties. By 1963 someone must have noted an issue with the sturdiness of the roof, and trusses were added to the collar ties. By 1968 even the trusses were not sufficient to keep the building stable, and small concrete blocks were placed around the chapel with supported angled poles to brace the building.

In September 1975, the structure was probably condemned (a familiar theme on Kwaj) and was completely torn to the ground with the exception of the end caps. It is unlikely the end caps were in much better shape than the roof, but this procedure would allow the project to be funded as a renovation instead of new construction. This time, huge concrete blocks were placed to support the roof beams, thus there were no walls or trusses inside the nave. The “new” chapel opened on Nov. 8, 1975. The original chapel had a mezzanine behind the altar that seemed to be used for the choir. The 1975 renovation walled off this area.

1988 saw an addition to the back of the chapel building for offices. In 1994 a large stained-glass window was added in the eastern wall of the chapel. Except for routine maintenance, the chapel remains pretty much the same today.

One may wonder why the services pushed to build an established chapel, seating just over 200 people, on an island teeming with more than 6,000 men after the war. It’s likely the building’s seating capacity was not a significant part of the equation. Rather, the goal was likely to build a dedicated house of worship that could give a sense of community to the personnel stationed on the island. The Island Memorial Chapel still serves that purpose today.

See the next pages for a pictorial review of the chapel as it has changed throughout the years.

THE KWAJALEIN HOURGLASS

The Kwajalein Hourglass is named for the insignia of the U.S. Army's 7th Infantry Division, which liberated the island from the forces of Imperial Japan on Feb. 4, 1944.

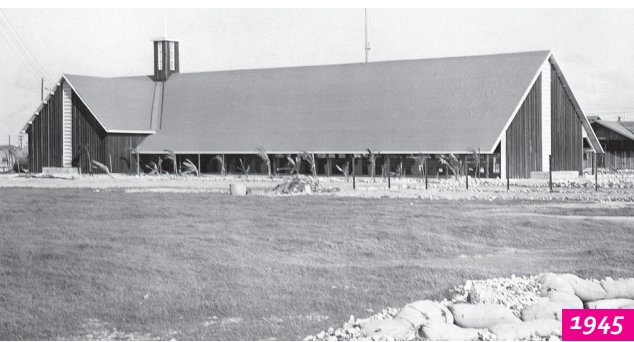
The Kwajalein Hourglass is an authorized publication for military personnel, federal employees, contractor workers and their families assigned to U.S. Army Garrison-Kwajalein Atoll.

Contents of the Hourglass are not necessarily official views of, or endorsed by, the U.S. Government, Department of Defense, Department of the Army or USAG-KA. It is published Saturdays in accordance with Army Regulation 360-1.

Phone: Defense Switching Network 254-3539
Local phone: 5-5169

Garrison Commander.....Col. Jeremy Bartel
Garrison CSM.....Sgt. Maj. Kenyatta Gaskins
Public Affairs Officer.....Mike Brantley
Communications Manager.....Jordan Vinson
Communications Specialist.....Jessica “JD” Dambruch

EXTERIOR



1945



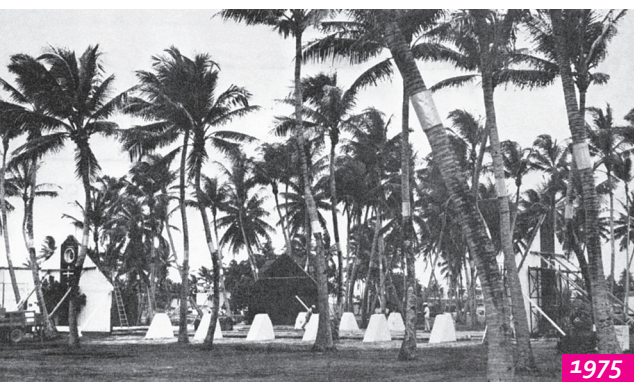
1951



1958



1968



1975



2013

INTERIOR



1945



1945



1953



1955



1963





2016

These images depict some of the face lifts given to the Island Memorial Chapel throughout the years. From its beginnings in 1945, to its presence today in 2020, the chapel has served as a cornerstone in the Kwajalein community. Images from: SMDC Historical Office, archival military imagery, Neville Withington Collection, Bill Remick, Ray Robiani, Kwajalein Hourglass, William Perry, William Hall, Poyntell Staley. Images assembled by Bill Remick.

This excerpt of Naval Base Weekly, a local Kwajalein newspaper that existed during World War II, announces the official dedication of the Island Memorial Chapel to take place Feb. 11, 1945.

Vol. 1. No. 2.

Naval B



CHAPLAINS' CORNER

Sunday Church Services:

Roman Catholic:

0800 - 8th St. Chapel.

0900 - 8th St. Chapel.

Protestant: - 0800 - Richardson Theater.

0900 - Richardson Theater.

1830 - Boat Pool Rec., Hut.

Jewish Devine Worship:

0930 - (NO SERVICE)

1400 - Meeting at Island Memorial Chapel

NOTE: Holy Communion will be observed in all Protestant Services.

FOR ALL HANDS: Time: 1030

Island Memorial Chapel Dedication

The dedication of the Island Memorial Chapel Sunday marks the first anniversary of the taking of Kwajalein. The service will be at 1030.

General Ross will unveil the memorial tablet which has been beautifully carved by Dr. Libby of the Navy attached to MAG-15. Chaplain Robert D. Workman, Chief of Navy Chaplains and Chaplain Julius Mark, in charge of all Jewish work for the Pacific Ocean Area will participate in the service. The Chapel will be presented by General Oden J. Ross and representatives of the Jewish, Protestant and Roman Catholic faiths will receive it. The service is for all hands. The Naval Base has contributed its share to the Chapel. The furniture has been made by the Ship Repair Department Carpenter Shop; one altar by the Yard Craft Department, while the carpenters from the headquarters shop have spent days in completing the final details. Chief Hadson of the 15th Special C.B.'s and his men have put the touch of their talented hands to the staining of the furniture.

This Dec. 25, 1953 excerpt of the Kwajalein Post, another local Kwajalein newspaper, explains why IMC is "one of the most attractive chapels in the Pacific."

PAGE 3

Memorial Chapel Monument To Armed Forces

Although dedicated to the memory of those who lost their lives in the capture of Kwajalein, the Island Memorial Chapel is also a monument to the spirit of cooperation of all religious groups and all branches of the Armed Forces.

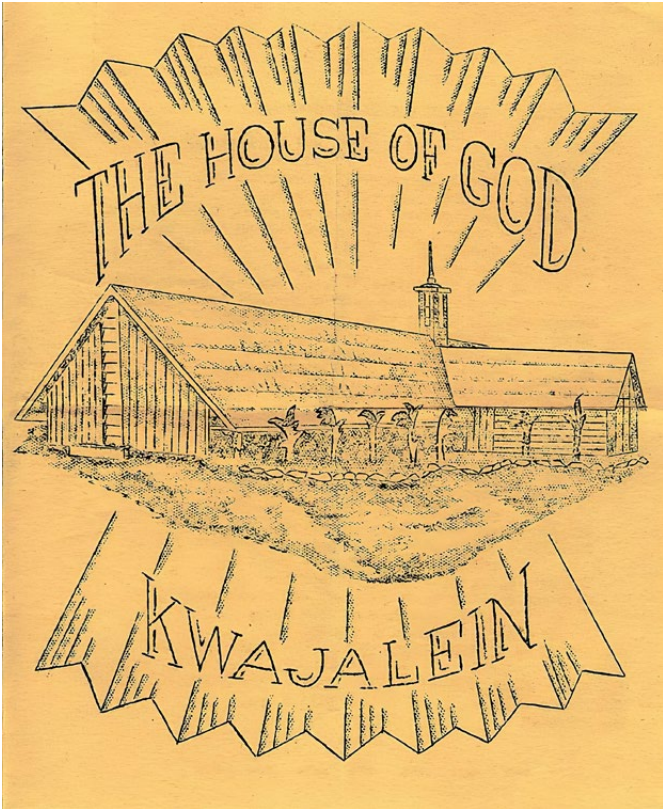
The building was designed by a member of the 893rd Aviation Engineers at the request of Major General Louis E. Woods, Commanding Officer of the Fourth Fleet Marine Air Wing. Materials were furnished by the Army. Marine carpenters constructed the edifice, and the Navy men made the church furnishings. The dedicatory plaque was carved by a member of Marine Air Group 15. Just two months after ground was broken, the Chapel was dedicated on 11 February 1945.

The only native style building on Kwaj, the chapel is 110 feet in length and 35 feet in width. Low sweeping eaves end in open sides, the dark mahogany interior is free of obstruction, and in contrast to the white and light green exterior. There are two transepts, one fitted out as a permanent Catholic Chapel, the other for organ and choir.

Recent renovation and partial refurnishing has enabled the Kwajalein Memorial Chapel to keep secure its reputation as "one of the most attractive Chapel in the Pacific".



This photo, by Julie Makovec, shows the original placard included with the chapel. It reads: "This chapel is dedicated to the memory of the gallant officers and men of the armed forces of the United States who gave their lives in the capture of Kwajalein. February first to February fifth one thousand nine hundred and forty four. Rest in Peace. — 4 February 1945"



A worship service book cover from 1945.

MARINE DEPARTMENT CREW DRY DOCK FUEL BARGE

HOURLASS REPORT

About 35 Marine Department crew worked together to nudge, tug and haul a garrison barge into a dry dock lock Jan. 30. It was part a demonstration of local crews' ability to dry dock a vessel of this size and part an opportunity to power wash the craft's slimy bottom. Orchestrated by Marine Department Manager Jamie Sandige, the effort lasted about 2.5 hours.

Pushing the barge into the lock was Captain Frank Nooner and crew aboard the Mystic tugboat. With the finesse of a NASA pilot docking a resupply capsule to the International Space Station, Nooner inched the barge to and fro, revving the mighty Mystic's engines to counter 20-knot wind speeds whipping through the docks.

Chatting back and forth via handheld radios, a handful of men aboard the barge, roughly 20 men on the dry dock and the Mystic crew coordinated the barge's approach with a surgical accuracy, bringing the vessel close enough to rocket weighted dock lines across the water to ensnare the barge. The crew spent the next 40 minutes tying up more lines to the boat and inching it slowly into the lock and gently into place.

As the hot mid-day sun beat down upon the deck of the barge, landside crew and marine divers secured the boat's bottom atop blocks on an underwater elevator that slowly—emphasis on slowly—pushed the hulking gray boat out of the water, exposing its slimy bottom to the sunshine.

The success of the operation opened discussion on whether the garrison might be able to dry dock the Mystic tug boat and perform basic maintenance, instead of the traditional practice of sailing the vessel to port for dry dock work on America's west coast.

1) A garrison barge rests on the dry dock after a 2.5-hour effort to bring it to shore and elevate it into place. 2) Todd Emmons, stationed on the barge during the operation, smiles for the camera. 3) The barge, pushed by the Mystic tug boat, approaches the dock. 4) Crew catch a lead line to help secure the vessel. 5) Jamie Sandige, bottom right, leads about 35 crew in bringing the large barge into its slip.

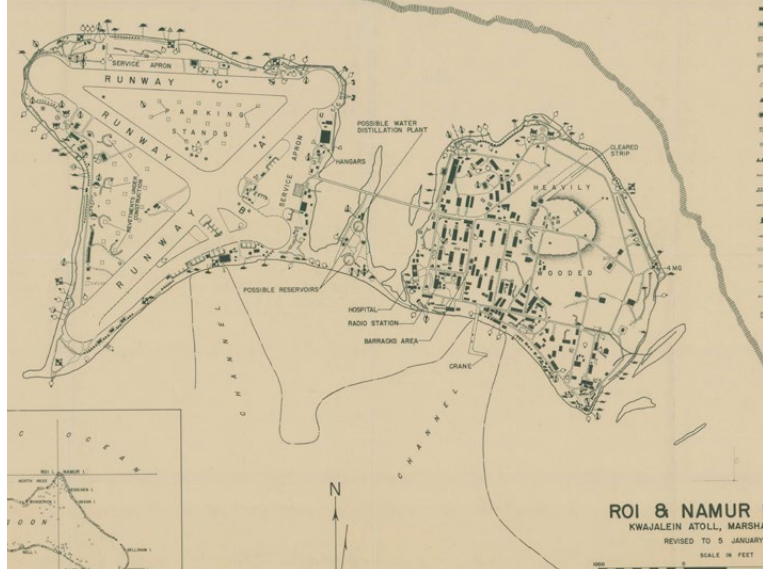
📷 Jordan Vinson





KWAJALEIN ATOLL MEDALS OF HONOR

📷 National Archives



HOURLASS REPORT

By this day in February 1944, all combat operations associated with Operation Flintlock—the American assault against Japanese defenders in the Marshalls—had completed. Thousands of service members fought admirably during the invasion, but some were recognized for actions warranting receipt of the Congressional Medal of Honor, especially on Roi-Namur. In fact, of the 16 million Americans who fought and served during World War II, only 332 were recognized with the nation’s highest honor for their “conspicuous gallantry and intrepidity at the risk of life above and beyond the call of duty.” Four of those medals went to men of the 4th Marines, who faced barely more than 24 hours of fierce combat against their Japanese opponents on the twin islets. Here’s a bit about the four men who earned the Medal of Honor for their actions on Roi-Namur.

MARINE PRIVATE 1ST CLASS RICHARD SORENSON

On Feb. 1, D-Day of the invasion, Sorenson was advancing through the jungle thicket of Namur when he and his comrades became flanked by Japanese machine gun fire. Seeking shelter in shell crater with five fellow Marines, Sorenson saw a grenade enter the shell hole near his location. Remembering discussion he had with his buddies the day prior—that whoever is closest to a live grenade about to detonate has to take the hit—Sorenson followed his word, threw himself on the grenade and took that hit, sparing the other five marines from any harm. The grenade seriously wounded Sorenson in the hip, arm and leg, but he

survived. He would spend the next seven months in military hospitals, undergoing several surgeries to rehabilitate him and remove the shrapnel peppering his body. For his actions, Sorenson was awarded the Medal of Honor on July 19, 1944. One of the catamarans that ferries workers to Meck is named in Sorenson’s honor.

MARINE PRIVATE 1ST CLASS RICHARD ANDERSON

Anderson received the Medal of Honor for sacrificing his life for the safety of his fellow Marines. Seeking shelter from Japanese gun fire, he attempted to hurl a grenade at an enemy location to neutralize the gun fire. He arced his arm back and began to throw the grenade up and forward when the munition slipped from his hands and rolled toward fellow Marines seeking cover in a shell crater. Sparing no time to weight the costs of his actions—and with no time left for him to retrieve the weapon and throw it, he threw his body on the grenade, taking the full impact of the explosion, killing himself and saving his comrades. The second of the two Meck Island catamarans is named after Anderson.

MARINE LT. COL. A. JAMES DYESS

The highest-ranking service member to be killed in action during the assault on Roi-Namur, Dyess took several Marines under his wing Feb. 1, 1944 and paid the ultimate price. As daylight began to fade on D-Day, a group of Marines sent out on a patrol lost their way and suddenly experience small arms fire barking from a concealed Japanese position. The gun fire killed one American sniper instant-

ly and wounded others. The Marine had found themselves surrounded on three sides, not realizing they had strayed from their intended path and gotten behind Japanese lines. They thought they were dead until Dyess appeared from their right flank. He ushered them into a shell crater and backward toward safety and put himself between the Marines and the enemies and unloaded rounds of cover fire before retreating to safety himself. The next day, on Feb. 2, he would something similar. While leading his team northward on Namur to clear out the last of the Japanese defenders, he put himself at the spear of his infantrymen’s attack. Standing atop debris to give himself a clear lay of the remaining island in front of him, he directed his men forward and was felled by a burst of machinegun fire, dying instantly. Roi-Namur’s airfield bears Dyess’ name.

MARINE 1ST LT. JOHN POWER

On D-Day, Feb. 1, a platoon led by Power encountered a Japanese pillbox spraying gunfire along the advancing front line. Failing to silence the defenders inside with grenades and satchel charges—the Japanese suppressing fire was too intense—his team decided to work its way around to the rear of the pillbox, with Power leading the way. As he neared the entryway, a bullet ripped open his stomach, but he continued, charging forward and emptying his carbine into the narrow slot of pillbox’s door. Keeping pressure on this wound with his left hand, he stopped to reload and was hit again. A Marine pulled Power to safety in a shell crater, where he spent his final minutes of life, posthumously earning himself the Medal of Honor.



Private 1st Class
Richard Sorenson



Private 1st Class
Richard Anderson



Lt. Col. A. James Dyess



1st Lt. John Power

Remember the Marshallese scouts

By Jane Toma

Hideo Milne, marine and recreation superintendent at USAKA, was just a baby when the Americans came to the Marshall Islands during World War II. Although he doesn't remember those days, he has cher-



Hideo Milne

ished recollections about historic events of the era from his relatives who were interpreters and scouts for the Americans during the war. He recalls how the uncles were recruited and worked

After the invasion of Kwajalein, U.S. servicemen came to Ebon, where Hideo's family lived. There were very few Japanese living on Ebon at that time, says Hideo. The Japanese fired upon the Americans and were subsequently killed.

Afraid, the Marshallese on Ebon approached the Americans with a flag of truce. The soldiers asked for Hideo's uncles, Edward, James M., James K., and Walter Milne, all grandsons of a Scottish whaling cap-

tain and a Gilbertese woman. The Americans knew the men spoke English and wanted them to translate and reassure the Marshallese that they would not be killed.

Hideo's uncles boarded a landing ship tank (LST) vessel where they joined up with Dwight Heine, grandson of the missionary Carl Heine, and several other Marshallese men who had been picked up by the Americans on other islands. They all went to Kwajalein and worked as interpreters and scouts for the American forces.

The scouts helped with the "mop up" or securing of the islands and atolls that were not heavily fortified by the Japanese. They went ashore at night to check on the Japanese and explain to the Marshallese that the Americans would not hurt them.

Edward told Hideo that the Marshallese were afraid of him at first. Marshallese people in those days, he explained, did not travel to other islands, and Edward, with his light skin and bald head, did not appear to be Marshallese.

The Marshallese were fearful of the Japanese who had confiscated food and severely punished them if they didn't cooperate. The Japanese also told the Marshallese that the

Americans would kill everyone.

The Americans bypassed fortified bases on Jaluit, Maloelap, Mili, and Wotje atolls. Although they didn't invade, U.S. forces harassed those bases daily with bullets and bombs.

Edward and other scouts went on reconnaissance missions on those atolls to report on the condition of the Marshallese and Japanese there. When he was on Maloelap, Edward learned that his brother Alex was imprisoned at the concentration camp on Taroa, Maloelap.

Alex had disappeared after some American pilots had been shot down. When the Japanese came to get him to interpret, he was out gathering breadfruit. Suspecting that he was trying to help the pilots, the Japanese took him away. His family never saw him again. Visiting Maloelap in the 50s, Hideo found a grave with Alex's name on it. The Marshallese at Taroa said he had been beheaded.

Hideo's uncles are gone and with them important information about a very significant time. "They rarely talked about that time," says Hideo. "And only when I asked, I'm glad I asked about that time of their lives, but I wish I had asked more."

Strategy

(From page 2)

ners had underestimated the strength of the Japanese island fortress. The naval artillery couldn't penetrate the concrete and steel bunkers overlaid with coral and coconut logs. Preliminary naval and air bombardment was inadequate. Most Japanese weapons were still operational when the men reached the shore. Tactical and logistical deficiencies also hampered the assault. In addition, hydrographic information was inadequate.

The battle at Tarawa tested an amphibious doctrine that had never been used, and the lessons learned would be applied to Kwajalein.

The experience gained at Tarawa, coupled with the expansion of U.S. arms in the Pacific, made the almost perfect amphibious operation at Kwajalein possible.



James K. Milne, later a Scout for the Americans, pictured as a child with his family. Left to right, front row: James K. Milne, James S. Milne, John N. Milne (sitting on James S.'s lap), Liomere Milne, and Mita Curry. Back row: May Milne, Alimida Milne, and Florence Milne. James K. is one of Hideo's uncles who worked as a scout during WWII. His father, John N., is the son of Scottish whaling captain Thomas Edward Milne. Liomere is James S.'s wife, Florence is his sister, and May, John N., and Liomere are his other children. Mita is the daughter of one of his sisters.

Islanders give thanks for surviving war

By Pat Cataldo

In the early days of February 1944, as the Battle of Kwajalein raged to an end, groups of dazed Marshall Islanders crept uncertainly from dug-outs on Kwajalein Island. They had survived the most pulverizing bombardment of the war in the Pacific.

Most of the islanders had been without food for a week, without water for several days. Few had ever seen an American, all were fearful of their reception, but more fearful yet that bombs or tanks would bury them alive. They emerged under truce flags made of bits of their ragged clothing to face what an American on the scene described as "the landscape of a nightmare."

The garden island of coconut, pandanus, and breadfruit, which Japan had made its principal naval base in the Marshalls, was devastated and burning. Of all the lush growth that once had covered it from lagoon to ocean, almost nothing remained. The sky was dark with the smoke of battle, death seemed everywhere.

Survivors recall with wonder that so great had been the shock of their experience, they did not feel the pain of wounds nor grief for the death of loved ones until long afterward. Yet they remember with warm gratitude the American soldier who quickly gave them water and food and shepherded them to safety. Many especially remember the tall American chaplain who strode toward them with a friendly smile, phrase book open, and did his best to pronounce the Marshallese greeting, "Yokwe yuk."

The most seriously wounded Marshallese were evacuated to a hospital ship in the lagoon, minor casualties were treated in the field hospital on Enubuj (Carlson). The rest were taken to Ennylabegan (Carlos), which had been relatively untouched by battle. There the Marshallese were joined by evacuees from other islands of the southern atoll. They were housed in former Japanese barracks, supplied with clothing and blankets, fed in Army chow lines.

At first, they were terrified that the Japanese would return. But



Marshallese survivors of the bombardment and liberation of South Kwajalein go to Ennylabegan for care

gradually they came to understand that they were safe from the war.

Out of thankfulness for the survival of their people and islands came the observance of *Ran in Kommolol*, Liberation Day, a day of thanksgiving. It is an annual commemoration, unique to the people of Kwajalein Atoll. The official date is Feb. 9, but for many years, the observance has been held on the Sunday following so that all may participate.

This year, a *Ran in Kommolol* will be observed in conjunction with the U.S.-Marshallese commemoration of the 50th anniversary of the battles of Kwajalein and Roi-Namur, Feb. 5, 6, and 7. But many Kwajalein Atoll residents will continue the observance until the traditional day of Feb. 9.

The day begins with a service of thanksgiving at the church, followed by feasting, group singing, and marching.

For the first *Ran in Kommolol* in 1945, a liberation song was especially written, called *Emyelong Emyelok*, "The Sky and Earth Have Burst." Singing is an important part

of most Marshallese celebrations, and the islanders are wonderfully prolific songwriters, producing new songs for every important occasion. For example, instead of old favorite Christmas songs, they prefer to write dozens of new ones every year. But *Emyelong Emyelok* has become a tradition.

Attention WWII veterans and Marshallese Scouts

USAKA is participating in a program to collect information about the World War II history of Kwajalein Atoll. This information will contribute to historic preservation programs at USAKA and throughout the Marshall Islands. Please participate in this important project by sharing your experiences and knowledge of events at Kwajalein Atoll before and during the war.

Questionnaires are available at the Welcome Center. Historians and other personnel are taking interviews this month. Call 4224 to receive a questionnaire or to schedule an interview.

CYS February Spotlight

Child Development Center

STEAM Afternoons

Join the CDC as we explore science, technology, engineering, art and mathematics.

- Tuesdays-Swimming at Millican Family Pool, 1 p.m.
- Wednesdays-Functional Fitness at 1 p.m.
- Fridays-Storytime at the Grace Sherwood Library, 1 p.m.
- Saturdays-Reading Buddies with Ms. Crump's third grade class, 2:10 p.m.

Upcoming CDC Events

Yoga on the patio. Stretch for it in this relaxing stretch program. Meets Feb. 20

Classroom Valentine's Day Celebration Feb. 14

Start Smart Sports. Fitness is fun in this program for children aged 3-5 years.

Soccer. Season runs until Feb. 13

Mini-Golf. Registration is open until Feb. 11. Season begins Feb. 27.

Baru Classroom Special Reminders

Saturdays are Water Play Days. Please send your child with swim clothes, a swim diaper (if needed), a towel, and dry clothes.

School-Age Care

Mentor Program

Meets daily 7- 8:30 a.m.

Teamwork is the highlight of this fun, new program, as School-Age Care kids mentor the CDC "littles" in fun projects and activities.

Open Rec

This free fitness program for K-6 students meets first and third Saturdays from 4:30-6:30 p.m.

Art February with 4-H Program

This free program meets Wednesday and Friday from 5-6 p.m. We get into visual arts in February.

Functional Fitness—Join this free program physical exercise activity program. Meets Wednesdays from 2:30-3 p.m.

K-6 Sports Programs

CYS K-6 cheerleading and soccer run until Feb. 11. Come on down and check the action on the field.

Sports Carnival

Get fit bit by bit with this fun program. Registration runs through Feb. 11. Season runs Feb. 25-March 21

Special Events at SAC

Feb. 21- Treasure Hunt

Feb. 28- 4-H Celebration of Learning

Daily Focus.

Let SAC help you foster your child's growing talents and interests with our special one-day activity programming: Art Tues-

days; STEM Thursdays; Recreation Fridays; Character & Leadership Development Saturdays

Namo Weto Youth Center

Sundays

Drama Club 4 p.m. Feb. 16

Tuesdays

Keystone Club at 11:30 a.m.

TedEd Power Hour at 4 p.m.

Wednesdays

Photography Club will meet at 5 p.m.

Thursdays

Kwaj Clean up at the beach at 4 p.m.

Trivia Night at 8 p.m.

Fridays

"Money Matters" course at 4 p.m.

Saturdays

American Sign Language Club at 5 p.m.

Keystone/Torch Club Officers meet at 4 p.m.

Youth Center Movies

Feb. 16- Hidden Figures

Feb. 23- Selma

Special Events at Namu Weto Youth Center

Variety Show Auditions- Feb. 9 and 16

High School Late Night Valentine Party- Feb. 15 from 9-11 p.m.

UPS Road Code- Feb. 21 and 22 at 6 p.m.

Black History Month TED Talk- Feb. 22 at 4 p.m.

Variety Show Dress Rehearsal-TBA

Special Note

Many CYS programs require preregistration. If you have questions or would like to learn more about registering your child or volunteer opportunities with CYS, please contact Central Registration at 5-2158.

Upcoming CYS Closures.

February 18- President's Day

Teachers' Note

Unless otherwise indicated, all programs for the Namu Weto Youth Center start or meet at the Center. Dates and times for events are subject to change. Please check in at your CYS location for the latest information.



📷 COURTESY OF USAG-KA CYS

VISIT USAG-KA CYS ON FACEBOOK FOR MORE PICTURES AND INFORMATION ABOUT OUR EVENTS AND PROGRAMS.
[HTTPS://WWW.FACEBOOK.COM/USAGKACYS/](https://www.facebook.com/USAGKACYS/)

COMMUNITY NOTICES

HELP WANTED

To research and apply for government employment opportunities on U.S. Army Garrison-Kwajalein Atoll and worldwide, visit usajobs.gov.

RGNext, LLC seeks qualified candidates to fill several open positions on Kwaj and Roi in engineering, technical and other areas. For more information and to apply, go to: www.rgnext.com.

DynCorp International (DI) is looking for qualified candidates for various positions. Current DI open positions on USAG-KA include administrative services, data analysts, education services, aviation and airfield operations, marine operations and public works among others. For more information and to apply, go to: www.dilogcap.com or contact your local HR representative.

CommunityBank

Community Bank is currently hiring for a Banking Center Service Specialist (AKA Teller). This is a part – time 20 hrs/week position for an on-Island hire. If interested submit your application and resume to www.dodcommunitybank.com. Please call Stephanie Prudence at 5-2152 if you have questions or would like more details about this opportunity.

OFFICIAL NOTICES

AA meets weekly on Tuesdays from 6:30-7:30 p.m. upstairs in the REB (Rm. 213).

Ongoing Smoking and Tobacco Cessation offered. Please call EAP at 5-5362 or make an appointment with a physician.

Internet customers can access their account and pay online. Simply visit KwajNetBilling.dyn-intl.com to log in and pay via our secure, online payment gateway using the payment method of your choice. You may also pay online for future months in advance! For support, contact us via phone @ 805-355-0843 (5-0843) or email KwajNet.Billing@dyn-intl.com.

USAG-KA 2020 Home Business License. Vendors who want to sell goods or offer services need to ob-

tain a license. Stop by the FMWR Office on the first floor of Building 805 for an application. For more information or to submit an application, contact Teresa Mitchell at 5-3400 or teresa.j.mitchell4.naf@mail.mil. Please include the following with your application: Applicable licenses and certifications; pictures and examples of goods offered; proof of insurance; and other relevant business information.

Volunteers are needed to participate in the pet cemetery upkeep program. Extra hands are needed to assist in tending garden spaces and to maintain the pet cemetery site. If you would like to offer assistance on an occasional or frequent basis, please contact Teresa Mitchell at 5-3400.

No Food and Drink on Metro Flights. Eating and drinking on Metro and helicopter flights is strictly prohibited. For your own safety and the sanitation of flights, we ask that you refrain from consuming food and beverages during flights. All drinks and snacks should be enjoyed in the air terminals or upon arriving at your destination. We appreciate your cooperation. For questions, please contact Lee Holt at 5-2102 and Fly Roi at 5-6359.

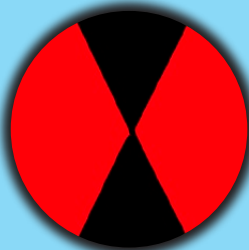
Need to report a non-emergency incidents or information? Send in secure reports online at the USAG-KA Police Department Facebook page. For more information, visit <https://www.facebook.com/kwajaleinpolice/>.

COMMUNITY

Swing Dance Class. Classes are free and everyone is welcome. Come down to the Vets hall to learn swing, ballroom, Latin and blues. Classes are Wednesdays from 7-8 p.m. All experience levels are welcome. No partner necessary. Questions? Email Natalie Bagley at natbagley@gmail.com.

Power Walk Ex. Stand strong, move forward and get to stepping with Power Walk ExClass meets Thursday and Saturday from 6 a.m.-7 p.m. Walk will begin and end at the Ivey Gym. All MWR fitness classes require a wellness class pass. For more information and to purchase your pass, visit the MWR desk at the Grace Sherwood Library and call 5-3331.

HOURLASS PHOTOS ON FLICKR



SINCE 2015, THE KWAJALEIN HOURLASS HAS POSTED WEEKLY PHOTOGRAPHS FROM EVENTS AND STORIES ONLINE FOR FREE DOWNLOAD. WHETHER YOU'VE PCS'D OR ARE A NEWCOMER, YOU CAN CHECK OUT THE LATEST AT [HTTPS://WWW.FLICKR.COM/PHOTOS/KWAJALEINHOURLASS/](https://www.flickr.com/photos/kwajaleinhourglass/) OR CLICK THE HOURLASS IMAGE.

RELIGIOUS COMMUNITY NEWS

Upcoming Chapel Events:

Feb. 17th (Mon) - Bike Blessing (7th Street by the Shopette) 11-2pm. Island Memorial Chapel volunteers will be available to help with free basic bike maintenance.
17th (Mon) - Theology on Tap (ARC) 630pm
Feb. 26th (Wed) - Ash Wednesday Services - both at 5pm. ID Service in the REB. Catholic Service in the Large Chapel.

Youth Fellowship
YF is held in the REB from 7-9pm in the REB on the following Mondays:
Feb 10, 24
Mar 9, 23
Apr 13, 27
May 11, 25

Prayer Group
1st & 3rd Fridays at 6:30pm in the Large Chapel

YogaFaith
Christ Centered Yoga on Mondays at 9am in the REB

Roi
ID Chaplain (1st & 3rd Fridays) at 6:30pm
Catholic Chaplain (2nd & 4th Fridays) at 6:30pm

YogaFaith
Christ-centered Yoga on Mondays at 9 a.m. in the REB. This yoga fitness event is free.

Roi Chapel Services
You are invited to services at 6:30 p.m. on Fridays. Join the community for Interdenominational Services on first and third Fridays Catholic Services meet second and fourth Fridays

OPSEC

OPSEC on the brain? It should be.

Know what you have to protect. Know how to protect it. Remember OPSEC at all times.

U.S. ARMY

Need Housing Repairs?

Call the Service Desk at 5-3550 Tuesday through Saturday, 7:30 a.m. to 4:30 p.m. For after hours emergencies, call 5-3139. After going through the service desk process, if you continue to experience issues, contact us.

Derek Miller, 5-2283
derek.d.miller14.civ@mail.mil

Scott Hill, 5-0133
michael.s.hill86.civ@mail.mil

We will work with you to resolve your issue.

Namo Weto Youth Center Hours of Operation, as of Feb. 1, 2020:

Sunday - 2:00-9:30
Monday - Closed
Tuesday - 3:00 - 9:00
Wednesday - 2:00 - 9:00
Thursday- 3:00 - 9:00
Friday - 3:00 - 9:00
Saturday - 3:00 - 9:30

GOT A FLIGHT?

ATI CHECK-IN

Early departures—7:45-8:15 a.m. For all other departures, check-in begins at 8-8:30 a.m. *Check with your ATI flight representative to confirm check-in and flight departure times.

UNITED CHECK-IN

Monday, United 155—3:30-4:45 p.m.
Tuesday, United 154—11-11:30 a.m.
Wednesday, United 155—2:30-3:45 p.m.
Thursday, United 154—11:30 a.m.-Noon.
Friday, United 155—3:30-4:45 p.m.
Saturday, United 154—11-11:30 a.m.

SHUTTLE BUS SERVICE

To set up a pick-up time for the shuttle please call 5-8294 or 5-3341. If a representative cannot be reached, please leave a detailed message and your phone call will be returned as soon as possible. Shuttle services start one hour prior to check-in times for United flights and 0700 for the ATI.



HAVE YOU STARTED TRAINING FOR THE RUST MAN?

BE
THERE
APRIL
27TH



NEED HELP? YOU'RE NOT ALONE

COMMUNITY CONNECTION / KWAJALEIN HOSPITAL

For those who have served on the front lines with the U.S. military, navigating challenges can be difficult. For those service members, Veterans and retirees within our community who experience startle responses, difficulty sleeping, a desire to isolate or increase alcohol consumption or an increase in flashbacks or nightmares, there are a variety of resources on island, online or via telephone.

Below are a few resources recommended in the VA newsletter.

1. The Veterans Crisis Line connects Veterans in crisis and their families and friends with qualified, caring VA responders through a confidential toll-free hotline, online chat and text messaging service.

Veterans and their loved ones can call 1-800-273-8255 and Press 1, chat online, or send a text message to 838255 to receive confidential support 24 hours a day, 7 days a week and 365 days a year.

<https://www.veteranscrisisline.net/>

2. The Veteran Training online self-help portal provides tools for overcoming everyday challenges. The portal has tools to help Veterans work on problem-solving skills, manage anger, develop parenting skills and more.

All tools are free and based on mental health practices that have proven successful with Veterans and their families. Its use is entirely anonymous.

<https://www.veterantraining.va.gov/>

3. AboutFace features stories of Veterans who have experienced PTSD, their family members and VA clinicians. There, you can learn about PTSD, explore treatment options and get advice from others who have been there.

<https://www.ptsd.va.gov/apps/AboutFace/>

Counseling on island is available through the EAP office (5-5362) or the Chaplain (5-3505). Please do not hesitate to reach out.

HEALTH UPDATES

HOURLASS REPORT

U.S. Army Garrison-Kwajalein Atoll works together with the Republic of the Marshall Islands Ministry of Health and Human Services to protect the Marshall Islands from the importation and spread of measles. Your continued patience and cooperation is appreciated during what the Centers for Disease Control have termed a global outbreak.

The *Kwajalein Hourglass* will continue to publish the latest health and travel advisory information. Please continue to monitor the AFN roller channel and USAG-KA Facebook page for the most current information. Island contractors should also contact their human resources departments. DACs and military personnel should contact Mary Haynes at 5-2354 with questions. Your continued patience and cooperation is appreciated.

RMI ALERT FY 20-01 UPDATE DEC. 10, 2019

Updates to RMI Government's Entry Requirements for Kwajalein residents

These measures are to protect the RMI against the importation of measles. Visitors to Kwajalein and individuals PCSing have no additional requirements to depart Kwajalein airport.

Kwajalein residents must show proof of vaccination or be younger than 6 months or older than 62 years, in order to depart Kwajalein airport (ATI included).

All passengers must show proof of vaccination or be younger than 6 months or older than 62 years, in order to board an RMI bound plane (ATI included).

For further information, DACs and Military, please contact Ms. Mary Haynes at office 5-2354. Contractors, please contact your employer.

We are still working with the RMI and our Embassy to clarify what documents will be accepted as proof of immunization status (doctor's note, yellow card, print-out, etc.) Thank you for your patience and we will update you again as soon as possible.

USAG-KA YOUTH DRIVER PROGRAM AVAILABLE THROUGH MARCH

It is not too late for island teens to learn to drive. Here are the steps youth drivers can take in order to start renting carts:

1. Youth with a valid State driver's license, learner's permit, and/or CYS Road Code proof of graduation will bring a signed parental permission form to our office. Forms can be obtained from the MWR Office in Building 805 and by calling 5-3400.

2. Once the Parental permission form is received, youth may coordinate with the Kwajalein Licensing office to obtain their Kwajalein License (we will provide them with contact information and hours of operation as they turn in their parental permission forms).

3. Licensed youth may rent and operate electric scooters the same as all other Licensed Kwajalein drivers. Youth with learners permits and/or Road Code Graduates are required to have a fully licensed driver in the front seat when the cart is in operation.

Any driving infraction will result in the youth's removal from the program. This pilot program is operating on a provisional period, expiring March 14, 2020. For more information, please contact MWR at 5-3400.

WEATHER WATCH

SHARE YOUR WEATHER PHOTOS WITH US! SEND SHOTS AND A BRIEF DESCRIPTION TO KWAJALEINHOURLASS@DYN-INTL.COM

BY RTS WEATHER STATION

WEATHER DISCUSSION:

February is the peak of the windy season, where daily wind speed averages peak and average precipitation is at a minimum. The upcoming seven days are no different. There will be very few showers in the region. Any showers that do exist will be small, fast moving, short life-cycle, aka "drive-by" showers. Winds will remain brisk out of the ENE. Weather models are showing a surge in trade winds approaching sustained speeds of ~25kts occurring late next week.

SATURDAY: Partly to mostly sunny with stray showers (<10% coverage). Winds E-ENE at 15-20 kts.

SUNDAY: Partly to mostly sunny with stray showers (<10% coverage). Winds E-ENE at 15-20 kts.

MONDAY: Partly to mostly sunny with stray showers (<10% coverage). Winds NE-ENE at 13-18 kts.



SUN-MOON-TIDES				
	SUNRISE SUNSET	MOONRISE MOONSET	HIGH TIDE	LOW TIDE
SUNDAY	7:09 a.m. 6:57 p.m.	6:55 p.m. 6:50 a.m.	4:29 a.m. 3.7' 4:41 p.m. 5.1'	10:20 a.m. -0.6' 11:06 p.m. -1.0'
MONDAY	7:09 a.m. 6:58 p.m.	7:56 p.m. 7:46 a.m.	5:06 a.m. 4.0' 5:18 p.m. 5.2'	10:59 a.m. -0.8' 11:42 p.m. -1.0'
TUESDAY	7:09 a.m. 6:58 p.m.	8:55 p.m. 8:39 a.m.	5:42 a.m. 4.2' 5:56 p.m. 5.1'	11:38 a.m. -0.8' -----
WEDNESDAY	7:09 a.m. 6:58 p.m.	9:52 p.m. 9:29 a.m.	6:20 a.m. 4.2' 6:33 p.m. 4.8'	12:17 a.m. -0.9' 12:17 p.m. -0.6'
THURSDAY	7:08 a.m. 6:58 p.m.	10:47 p.m. 10:18 a.m.	6:58 a.m. 4.1' 7:10 p.m. 4.4'	12:53 a.m. -0.7' 12:57 p.m. -0.3'
FRIDAY	7:08 a.m. 6:59 p.m.	11:43 p.m. 11:05 a.m.	7:38 a.m. 3.8' 7:49 p.m. 3.8'	1:28 a.m. -0.3' 1:41 p.m. 0.2'
FEBRUARY 15	7:08 a.m. 6:59 p.m.	----- 11:53 a.m.	8:24 a.m. 3.5' 8:33 p.m. 3.1'	2:06 a.m. 0.1' 2:32 p.m. 0.7'

E-WARENESS

Safeguarding Threatened, Endangered, and Protected Species

Do not disturb, haze, harass, injure, or harm any protected species or their habitats.

No one at USAKA shall take endangered or threatened species, modify critical habitats, or take migratory birds (except as provided for in a Document of Environmental Protection.)

Inform Management or Environmental if it is discovered that ongoing operations will impact any protected species.

Kejbaroki Men in Mour ko Jen Joreen Otemjej Ekoba Bao ko im ko Jet Emej Kejenoloki nan Kejbaroki

JAB Irōji, Aojidri, Kōbeli, Kakkuri ak Kemetaki men in mour kein ekoba ijoko jikier ak rej bed ie.

Ejjelok juon ilo USAKA ej aikuj kakurri ak irōji men in mour kein, kommani oktak nan ijoko jikier nan kakkuri, ak buki bao ko (ej kemlet im alikar ilo melele im pepa ko jen Environmental Protection.)

Karon Management ak Environmental elane kwoj loe wawein kein aolep nan jabdrewot men in mour kein jej aikuj kejbaroki.



The International Space Station will be visible from Kwajalein Atoll on the nights listed below. Click the individual dates below to see a sky chart illustrating the ISS's trajectory across the sky each night, the times it will appear and disappear each night and its apparent brightness throughout each night's trajectory.

FEB. 10

Appears from

NNW, 7:42 p.m.

FEB. 11

NW, 8:31 p.m.

FEB. 12

NW, 7:43 p.m.

FEB. 14

E, 7:44 p.m.

FEB. 16

NE, 6:46 a.m.

FEB. 17

E, 5:58 a.m.



**INNER TUBE
WATER POLO**



**Come on out and support
Inner Tube Water Polo!**

Season Dates

Now through Feb. 25
League play on Tuesday and
Saturday nights

KWAJ- EBEYE - FERRY SCHEDULE
Effective November 1, 2019

EBEYE - TUESDAY TO SATURDAY					EBEYE - SUNDAY & HOLIDAY				
ETD KWAJ	ETA EBEYE	ETD EBEYE	ETA KWAJ	TYPE VESSEL	ETD KWAJ	ETA EBEYE	ETD EBEYE	ETA KWAJ	TYPE VESSEL
0245	0310	0315	0340	FB N/1	0400	0425	0430	0455	FB N/1
0420	0445	0450	0515	FB 1	0500	0525	0530	0555	FB 1
0450	0515	0520	0545	FB 2	0600	0625	0630	0655	FB 1
0520	0545	0550	0615	FB 1	0830	0855	0900	0925	FB 1
0550	0615	0620	0645	FB 2	1140	1205	1210	1235	FB 1
0620	0645	0650	0715	FB 1	1530	1555	1600	1625	FB 1/N
0650	0715	0720	0745	FB 2	1700	1725	1730	1755	FB N
0720	0745	0750	0815	FB 1	2000	2025	2030	2055	FB N
					2200	2225	2230	2255	FB N
1140	1205	1210	1235	FB 2/A	Holidays	Only	Add	Extra	Run Below
					1830	1855	1900	1925	FB N
					MONDAY				
1440	1505	1510	1535	FB A	0315	0340	0345	0410	FB N/1
1600	1625	1630	1655	FB A	0500	0525	0530	0555	FB 1
1700	1725	1730	1755	FB A	0600	0625	0630	0655	FB 1
1730	1755	1800	1825	FB N	0720	0745	0750	0815	FB 1
1800	1825	1830	1855	FB A	0830	0855	0900	0925	FB 1
1830	1855	1900	1925	FB N	1140	1205	1210	1235	FB 1
1900	1925	1930	1955	FB A	1440	1505	1510	1535	FB 1/N
2000	2025	2030	2055	FB N	1645	1710	1715	1740	FB N
2130	2155	2200	2225	FB N	1745	1810	1815	1840	FB N
Saturday	Only	NO	2130 run	2200 run only	1900	1925	1930	1955	FB N
2200	2225	2230	2255	FB N	2000	2025	2030	2055	FB N
					2130	2155	2200	2225	FB N
	FB =	Ferry	Boat						

REPUBLIC OF MARSHALL ISLANDS 2019 NOVEL CORONAVIRUS – HEALTH TRAVEL ADVISORY & RESTRICTIONS

As of Feb. 4, 2020

Currently the People's Republic of China is responding to a newly identified virus causing a flu-like illness, temporarily named by the World Health Organization as novel coronavirus (2019-nCoV). The virus was first detected in Wuhan city, Hubei Province, PRC, and subsequently cases of 2019-nCoV have been identified in travelers in several other countries.

The new virus is a coronavirus, which is a family of viruses that include the common cold, and viruses that cause severe acute respiratory infection. The virus can be transmitted from person to person, similar to other influenza viruses.

In response to this international disease threat, the Republic of Marshall Islands is implementing the following inbound travel restrictions for visitors to RMI. These requirements will come into force effective January 24, 2020.

All travelling passengers must complete a Special Health Screening Form to assess potential signs and symptoms and exposure to 2019-nCoV, before or on arrival to RMI.

The Republic of Marshall Islands is implementing the following inbound travel restrictions for visitors, effective Feb. 2, 2020:

Suspension of all persons, travelling via air or sea, from the People's Republic of China, Macau and Hong

Kong, for a period of 30 days, starting Feb. 2 until March 2, 2020.

All GRMI government and sponsored official trips to be suspended to affected countries, effective immediately, until further notice, with the exception of patients approved by the RMI Medical Referral Committee.

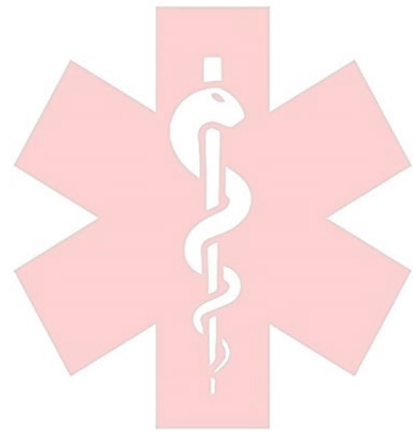
It is strongly recommended that all persons intending to travel to PRC or other affected countries postpone their travel arrangements. In the event that travel cannot be postponed, preventive measures (hand and cough hygiene) should be adhered to at all times and incoming requirements above will be applied upon return to RMI.

(SIGNED)

Jack Niedenthal

Republic of the Marshall Islands

Secretary of Health & Human Services



The Yokwe Yuk Women's Club



Thursday February 13th
From 4-6pm

In Front of the MIC Shop
Downtown

Proceeds to benefit educational needs
throughout The Marshall Islands & Micronesia

**THE ADULT POOL
WILL BE CLOSED FOR RENOVATION
FEB 1st TO MAR 31st**

THE FAMILY POOL WILL BE OPEN FOR ADULT LAP
SWIM AT THE FOLLOWING TIMES:



SUN: 0400-0800 & 2015-2200
MON: 0400-0800 & 2015-2200
TUES: 0400-0800
WED: 0400-0800 & 2015-2200
THURS: 0400-0600
FRI: 0400-0800 & 2015-2200
SAT: 0400-0800



41st ANNUAL SWEETHEART RELAY
MONDAY, FEBRUARY 17TH

IN FRONT OF GRACE SHERWOOD LIBRARY
CHECK IN AT 8:30/ RACE STARTS AT 9AM
PRE-REGISTRATION BY FEB 15TH IS MANDATORY



REGISTRATION FORMS CAN BE PICKED UP FROM QTRS 473A ON PALM ST.
QUESTIONS: CONTACT BOB OR JANE SHOLAR AT 5-1815

Chapel Bike Blessings!

Monday, Feb 17th - 11-2pm

Island Memorial Chapel volunteers will be available to help with free basic bike maintenance. Come and stop by the tent on 7th Street behind the Shopette.



Pre-K You "CAN" Recycle

DID YOU KNOW...

- Cans take around 200 years to decompose!
 - Cans do NOT burn easily in the incinerator!
 - Cans damage our incinerator which can take several days to repair while our trash continues to build up!
- Join the Pre-K class in our mission to REDUCE, REUSE, and RECYCLE**

Our goal is to collect and recycle **600** cans by **FEBRUARY 29, 2020**

Please **clean** all of your cans and drop them off in front of CYS Central Registration Building 358 to show everyone how, together, we can positively impact the beautiful Kwajalein Island!

February CWF Luncheon

Join us for Christian Women's Fellowship!
Sunday 2/9/2020 at 12:30 PM
Religious Education Building

Mardi Gras Parade & Celebration

February 23rd
5pm: Parade starts at Teen Center
5:30-8pm: Mardi Gras Celebration at Emon Beach

Music!
Crafts!
Games!
Food for Sale!

Questions? Stop by the MWR desk at the library or call 5-9331

It's time for the Mardi Gras Parade!

February 23,
starting at 5pm at the Teen Center
Get your "Krewe" together and decorate a cart for the parade!



Call 5-3331 or stop by the MWR desk at the library to register
*Registration closes Feb. 19th

Calling All vendors!

If you have a craft or concession you would like to sell at the Mardi Gras Celebration, contact MWR at 5-3331 or stop by the library to register for a table by Feb. 19th.

*\$5 fee for each table

*All vendors must have a current vendor's license

*All fundraisers must be approved by the FMWR office

Mardi Gras Party at the Oceanview Club!

Sunday, February 23

9PM - 1AM

Live Band – Beads - Games