

VOLUME 59 NUMBER 12

MARCH 24 2018

THE KWAJALEIN HOURGLASS

THIS WEEK

IMCOM PACIFIC LEADER

IMPRESSED WITH PROGRESS - P 2

JAPAN AMBASSADOR

TALKS RMI AND U.S. RELATIONS - P 6

SCIENCE FESTIVAL

CONNECTS KIDS TO MENTORS - P 8

SEABEES FROM NAVAL MOBILE CONSTRUCTION BATTALION 11 CURRENTLY DEPLOYED TO USAG-KA SPILL OUT OF THE GREAT BRIDGE ONTO THE ISLAND OF BIGEJ FOR A WATER CATCHMENT CONSTRUCTION PROJECT.



NIKKI MAXWELL





Seabees of Naval Mobile Construction Battalion 11 carefully offload their heavy equipment from the Great Bridge landing craft onto Bigej March 15.

BIGEJ BEACH LANDING

NEWS / NIKKI MAXWELL, USAG-KA PUBLIC AFFAIRS

On March 15, 2018, the Seabees of Naval Mobile Construction Battalion Eleven made history in the Marshall Islands, conducting a beach landing on the remote islet of Bigej in Kwajalein Atoll. The highly coordinated effort was the result of three weeks of planning and preparation. According to the detachment commanding officer, that combined with the experienced Sailors and Great Bridge crew, led to the successful scene.

"It was fantastic, like watching a World War II movie," said Commander Jim Brown, commanding officer of NMCB 11. "To see the landing craft hit the beach and our Seabees roll the equipment onto the shore ... 30 years in the Navy and I have never seen that before."

The Seabees are spending two weeks on Bigej to build a freshwater catchment system for the island's population of approximately 50 people.

"I'm looking forward to finishing it safely and having a high quality of work

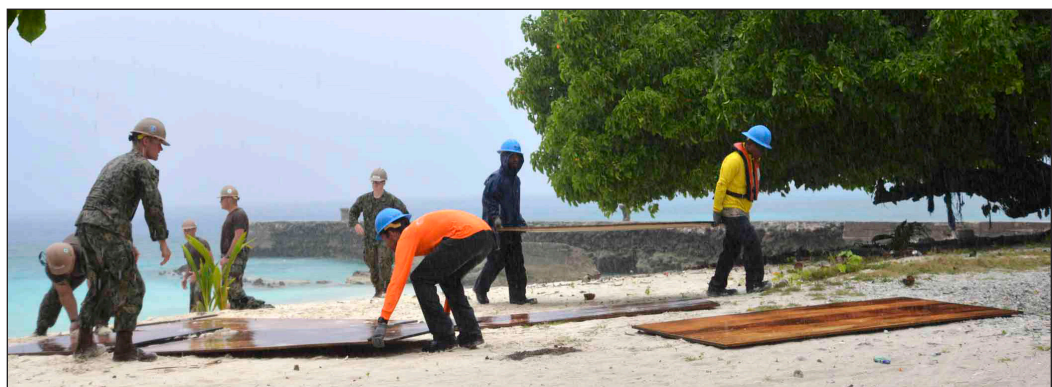
build here," said Petty Officer First Class Marc Artache of NMCB 11, during an interview prior to what he referred to as a logistical nightmare. "First, we are going to offload all of our building tools and supplies from the LCU using the 11 K and 420 back hoe. We have to put ramps down on the beach so we don't sink the equipment into the sand."

The sailors faced many challenges during this operation, including weather. As the Great Bridge approached Bigej, the sky darkened, and a rainsquall poured down over the area. The deck of the ship became wet and slick while the ramp slowly lowered onto the beach. Despite the heavy rain, residents of Bigej were gathered on the shoreline to watch the show with anticipation for what was to come. One of the spectators was Allen Loeak, who moved from Ebeye to Bigej in February for a job and was aware of the Seabee's presence in his country.

"I have seen other projects the Seabees have done for us on Ebeye," said Loeak. "This is a really good service and we appreciate it so much. We are very grateful for them."

The Seabees and Marshallese Great Bridge crew began a bucket brigade style process, carrying sheets of thick plywood onto the shore to create a firm pathway for the heavy vehicles to gain traction on as they traveled off the ship and over the sandy hill to the worksite beyond the tree line. After 30 minutes and several attempts driving up over the hump, they were successful and the unloading began.

Command Master Chief Chris Beck of NMCB 11 joined Brown for the visit to Kwajalein Atoll and to observe the project getting underway. This was Beck's fifth official visit to the Pacific in support of Seabee activities.



Seabees and Great Bridge crew work side by side to create a makeshift plywood road for heavy equipment.

THE KWAJALEIN HOURGLASS

The Kwajalein Hourglass is named for the insignia of the U.S. Army 7th Infantry Division, which liberated the island from the forces of Imperial Japan on Feb. 4, 1944.

The Kwajalein Hourglass is an authorized publication for military personnel, federal employees, contractor workers and their families assigned to U.S. Army Garrison-Kwajalein Atoll. Contents of the Hourglass are not nec-

essarily official views of, or endorsed by, the U.S. Government, Department of Defense, Department of the Army or USAG-KA. It is published Saturdays in accordance with Army Regulation 360-1.

Phone: Defense Switching Network 254-3539
Local phone: 53539
Printed circulation: 620

Garrison CommanderCol. James DeOre Jr.
Garrison CSM Sgt. Maj. Todd Shirley
Public Affairs Officer Nikki Maxwell
Communications Manager..... Jordan Vinson
Communications Specialist...Jessica Dambruch



1. Members of NMCB 11 discuss the offload and project plan prior to arrival at Bigej. 2. Officer In Charge of NMCB 11 detachment Ensign Daniel Hulse, briefs the Marshallese project contact. 3. Upon arrival at Bigej, Seabees prepare to jumpstart one of the construction vehicles in preparation for offloading.

"We have unloaded gear and equipment here [in RMI] before, but it was on a smooth, concrete ramp," Beck said. "This was a new situation for our Seabees. I can only imagine how the Seabees did it in the 1940s and before these islands were more built up. One of the great things about Seabees is their ingenuity is limitless. Whenever there is a task or project to get done, they will always find a way to do it."

The water catchment project is just the latest in a list of humanitarian projects completed by Seabees to improve the quality of life for thousands of Marshallese citizens and other nations in the Pacific. Other recent projects by previous Seabee detachments include the rebuilding of new kindergarten classrooms on the island of Ebeye and a water tower on the island of Enniburr to provide clean drinking water for the remote population. The NMCB 11 detachment began

their six-month deployment on USAG-KA in February and will take on more projects when they return from Bigej.

Brown said he is beyond proud of his Sailors and all of their ongoing humanitarian projects around the Pacific.

"These ongoing missions are vitally important for us to support the local populations and demonstrate to the communities and island chains that we are here to help improve their quality of life," he said. "And this detachment is going to do some really great work during their time here [in the RMI]."

"The Navy Seabees are one of the largest humanitarian organizations in the world," Beck explained. "This operation epitomizes all the slogans, the Navy commercials. It truly is a journey for these Sailors. They get out here and directly impact and improve the lives of others who need our help, and I hope they hold on to that feeling that they are part of

something greater than themselves."

Petty Officer Third Class Stephen Cheshire, who with 2.5 years in the Navy is the most junior member of the detachment team, said he understands how important NMCB 11's mission is here in the Kwajalein Atoll. He is looking forward to the experience, he said.

"I want to learn something new while we help out the local community," said Cheshire, who was deployed to Kosrae in 2017. "I've heard about Kwajalein Atoll, and appreciate the chance to learn more about it while we work here."

Reflecting on his own long Navy career as a Seabee, Beck summed up his feelings about the project.

"They are providing a service for someone truly in need, and this is what it is all about," he said. "I hope they are proud of themselves and their team, and tell this story long after they leave the Navy."



U.S. Army photos by Nikki Maxwell

U.S. Army Garrison-Kwajalein Atoll Commander, Col. James DeOre; Dr. Christine Altendorf, director of IMCOM Pacific; Command Sgt. Maj. Jason Schmidt of IMCOM Pacific; Command Sgt. Maj. Delano Talley of the 402nd Army Field Support Brigade; Command Sgt. Maj. Todd Shirley; Daniel Ahern of IMCOM Pacific MWR; and Col. John Brookie, commander of AFSB, gather for a photo on the west end of Kwajalein.

IMCOM PACIFIC LEADER ADVOCATES FOR USAG-KA

NEWS / NIKKI MAXWELL, USAG-KA PUBLIC AFFAIRS

Dr. Christine Altendorf is responsible for more than ten garrisons and Army installations throughout the Pacific. Her role as director of Installation Management Command Pacific includes advocating for Army communities in Hawaii, Japan, South Korea, Alaska and Kwajalein. She visits those sites whenever possible.

"I want to ensure that we (IMCOM) are helping you improve your community, and resolve any local issues at a higher level," Altendorf told Col. James DeOre, commander of U.S. Army Garrison-Kwajalein Atoll, and his staff during her recent visit March 12 -15. "It is my job to fight for you and advocate for you."

During the command brief, Altendorf said she is proud of how the garrison has transitioned through the significant new contract changes and stands ready to help continue that progress.

To see some those changes and updates in person, Altendorf, her Command Sergeant Major Jason Schmidt and Daniel Ahern, director of Morale, Welfare and Recreation (MWR) for IMCOM-Pacific, took a windshield tour of Kwaja-

lein and Roi-Namur. Some of the stops included the Kwajalein hospital, the air field, the gold course and country club, the Ocean View club, the family housing area, the Child and Youth Services preschool, the MWR Bowling Center and the community library. DeOre explained the status of various facilities and projects to Altendorf along the way. This included a

visit to the west end of Kwajalein where Derek Miller, of USAG-KA Environmental, explained the shoreline clean-up plan which will begin this year. Another key point of interest was a visit to the communications center where Altendorf was briefed on the status and support capabilities of residential communications.

"It is very beneficial for our senior



U.S. Army photos by Nikki Maxwell

leaders, like Dr. Altendorf, to experience firsthand the challenges of the island's infrastructure, so that she and others can help drive the funding levels," said Jamie Heidle, USAG-KA director of Public Works.

This was Altendorf's fourth visit to the Marshall Islands. During previous visits she traveled to the nearby island of Ebeye, where the majority of the Marshallese workforce lives. However, this time she flew to Roi-Namur, then traveled to the small island of Ennubirr, where 100 Marshallese employees live with their families.

Altendorf commented that it was personally important to her to meet the residents there and thank them for what they do on the USAG-KA team. She also wanted to see the U.S. Navy Seabee projects completed there, including a water tower and fresh water catchment system and shade structure on the pier and a two-room multi-purpose building for the local government.

As they explored Ennubirr, Altendorf, Schmidt and DeOre stopped to give candy to children and shake hands with local leaders. A group of children called out from a nearby tree, where they had climbed up to play. Shirley responded by walking over to fist bump with the smiling kids.

Later that evening, the distinguished visitors attended USAG-KA's quarterly Hail and farewell potluck dinner, where the theme was "Saint Patrick's Day." Altendorf, Schmidt and Ahern came prepared, wearing green for the event and posing for festive pictures with Kwajalein DoD staff and family members.

"I love Kwajalein Atoll," Altendorf said. "It is like nowhere else in IMCOM. We have special people here supporting a crucial mission for our Army and our country."

To learn more about U.S. Army Garrison Kwajalein Atoll, follow the official Facebook page, www.facebook.com/USArmyKwajaleinAtoll.



Dr. Christine Altendorf, right, and Command Sgt. Maj. Jason Schmidt enjoy fresh coconut water upon arrival on Ennubirr March 14.



U.S. Army photos by Nikki Maxwell



U.S. Army Garrison Kwajalein Atoll Commander Col. James DeOre recognized some of his staff for their outstanding work this quarter during a gathering at the Capt. Louis Zamperini Dining Hall March 2. Pictured with DeOre from top left are Maj. Ben Walker; the USAG-KA DOL team; Staff Sgt. Christina Barnes with Command Sergeant Major Todd Shirley; and Chief Tim LaBrie.

HOURLASS INTERVIEWS

AMBASSADOR HIDEYUKI MITSUOKA

FEATURE / JORDAN VINSON

Japanese Ambassador to the RMI Hideyuki Mitsuoka was on U.S. Army Garrison-Kwajalein Atoll last week to work on bilateral issues involving Japan and the RMI and to also visit with Japanese citizens who flew to Kwajalein Atoll to honor the Japanese service members who perished during WWII battles in the archipelago. Mitsuoka took a few minutes to talk with the Kwajalein Hourglass about his job in Majuro and diplomacy between Japan, the RMI and the United States.

Kwajalein Hourglass: Why is it important for Japan to maintain a strong diplomatic link with the Marshall Islands?

Ambassador Hideyuki Mitsuoka: This is a very important question for us. I think there are several reasons for that. For example ... this year marks the 30th anniversary for the establishment of diplomatic relations between our countries. Our historical ties, however, date back more than 100 years. And we have enjoyed and developed a cooperative relationship over a long time. And also, Japan has been an active and consistent developmental partner of the RMI since the 1980s. So, I believe that Japan's development assistance in the RMI has greatly contributed to the development of the RMI.

This is the first reason. And secondly, the area you see around the RMI is a good fishing ground for tuna and bonito for Japan. ... About 80 percent of consumption of tuna and bonito in Japan comes from these areas of sea around the Pacific island countries, of course, including the RMI. This is the second reason. I think the third reason, in addition to the bilateral relations between our two countries, Japan and the RMI have a cooperative relationship in the international arena, such as in the United Nations. And the RMI always supports Japan's position in international society. For instance ... RMI supports Japan's aspirations to seek a permanent seat in the UN Security Council.

HG: What are a few of the most important bilateral projects the RMI and Japan are working on together?

AHM: Currently, we are working on a project of the installation of a solar electricity system in Ebeye. In November last year, their minister of foreign affairs and trade, John Silk, and I signed an exchange of notes for the project. ... I hope that this project will greatly

contribute to the RMI's national energy goal, for renewable energy to cover 20 percent of domestic power demand in the RMI by 2020. Also, we're a country working on youth exchanges, such as middle school students and high school and college level. Also the revitalization of sister cities between Majuro and Kawai-cho, Kawai Town in Nara Prefecture.

HG: Japan is a major financial and capital donor to the Marshall Islands. Last November, for example, you oversaw the donation of \$65,000 to Majuro's Waan Aelon in Majel (WAM) canoe and outrigger sailing construction and education school. The grant was funded through Japan's Grant Assistance for Grassroots Human Security Projects (GGP). Can you tell us more about GGP and other grant programs Japan maintains for the RMI?

AHM: Japan has mainly carried four types of assistance in the RMI. First is project type grant aid implemented through JICA: Japan International Cooperation Agency. The size of one project is the largest amount of any of Japan's assistance programs, typically around 10 million U.S. dollars. An example for a project type grant aid is Majuro Hospital and the fish base at Uliga Dock in Majuro. Another type of assistance is economic and social development grant aid, called non-project type grant aid, which is basically the procurement of products and equipment that we give to the government of the RMI.

The [Japanese] embassy is in charge of coordinating, and the size of the grant amount is usually one-to-three million U.S. dollars. In the RMI, examples are heavy equipment, desalination units, waste metal compressors and plastic compressors at the recycling center in Majuro. The third is GGP [Japan's Grant Assistance for Grassroots Human Security Projects]. This is smaller size assistance available for local governments, schools, hospitals, local government, energy use and others for the improvement of the social wellbeing of people at the grassroots level. In principal, the grant amount is up to around 90,000 U.S. dollars. Since 1995, over 141 projects of this type have been granted in the RMI. The fourth type, other types or programs conducted by JICA, are technical cooperation, such as providing training opportunities in Japan [and JICA volunteers in the RMI]. Currently 17 JICA volunteers are working for various places, such as elementary schools, Majuro Hospital, MINTA, the



Japanese Ambassador to the Republic of the Marshall Islands Hideyuki Mitsuoka visited USAG-KA during the week of March 14.

EPA and so on. Among them, 16 volunteers are in Majuro, and one volunteer is in Ebeye; he works for Ebeye Elementary School as a mathematics teacher. Usually they spend two years on assignment.

HG: Does Japan funnel any money or capital assistance to the outer atoll communities like Mili Atoll or Jaluit Atoll?

AHM: As far as grant aid to the outer atolls, outer islands, Japan has implemented almost 80 projects through GGP since 1995. These projects were implemented not just in Mili and Jaluit, but also in more than 20 atolls, such as Ailinglaplap, Namorik, Aur, Arno, Ebon and so on.

HG: How many Marshallese citizens, or persons of Marshallese heritage, live in the nation of Japan?

AHM: We have Japanese government statistics. According to the statistics, there are 11 Marshallese citizens living in Japan, and I understand that most of them married Japanese people. Just 11.

HG: What are some of the most important policies or agendas Japan and the United States need to work on?

AHM: I can say that, you know, Japan and United States are strong allies, sharing basic values and strategic interests with the Japan-U.S. security arrangement at the core. This is a very important arrangement between our two countries. So, under such a strong alliance, our two countries are closely working together and sharing roles and responsibilities.

ties not only in bilateral relations, but also in regional issues in Asia-Pacific and global issues, such as human security, human rights, climate change, disaster risk reduction and disarmament and non-proliferation [of nuclear weapons]. Moreover, I think the cooperative relationship between our two countries in the international society is getting more important.

HG: North Korean ballistic missile testing and, of course underground nuclear warhead tests, are concerns common to Japan and the United States. What can you say about the importance of the Reagan Test Site, here on Kwajalein Atoll, to Japan's strategy in dealing with North Korea's ambitions toward nuclear-armed ICBMs?

AHM: As you know, North Korea has launched missiles flying over Japan several times. And it has said it would launch missiles aiming at the area of sea around Guam. So North Korea has become a serious threat, not only to Japan and the U.S., but also to the whole international society. So, I think the RMI is located in a place between Guam and Hawaii and occupies an important position in terms of the U.S. strategy. This is my personal view. I personally recognize that that the Reagan Test Site plays an important role in terms of playing a deterrence power against North Korea.

HG: Thousands of Japanese Soldiers, Sailors and Airmen died during WWII fighting here on Kwajalein Atoll, in the greater Marshall Islands and in neighboring countries. The Japanese War-Bereaved Families Association (Nippon izokukai) is the organization that flies living relatives of those fallen warriors to visit their graves on these islands in which they perished while fighting for their nation. Can you tell us a little about the role this organization plays in honoring the legacy of Japan's lost service members, and can you tell us what your office's interaction is with the organization when it visits the RMI?

AHM: This organization is a nation-wide incorporate foundation chartered by the Japanese government. And its main services consist of a memorial service of the war dead, welfare promotion for the war bereaved families and collection of the remains of the war dead. So, the Japanese government ... supports the foundation by assigned government services and providing financial assistance. Therefore, our embassy extends possible assistance to [the association's] visits. ... The organization has played an important role in honoring the legacy of



Mitsuoka and DI Public Affairs Office Communications Manager Jordan Vinson discuss travel and Japanese diplomacy March 14 at the Kwaj Lodge.

Japan's lost service members. Specifically, in order to honor the legacy of Japan's lost service members, war bereaved families visit many places, many countries, like the Marshall Islands. They visit the Marshall Islands once or twice per year to conduct a memorial service. Other than the Marshall Islands, war bereaved families [visit] many places, such as China, Russia, Mongolia, the Philippines, Myanmar, Taiwan, Papua New Guinea, Palau, the Federates States of Micronesia, the Solomon Islands and so on. Not only to the RMI.

HG: How are Japan and the RMI partnering up against climate change?

AHM: We recognize that climate change is an issue that requires immediate action by international community. The U.N. Framework Convention on Climate Change conference of parties has been a pivot for active discussions to reduce greenhouse emissions on the global level, every year since 1995. Japan has actively participated in negotiations on climate change. In December 2015, the Paris Agreement—you know, this was a very important agreement—was adopted as a new international framework for greenhouse gas reduction in the post-2020 period. Actually, Japan has been working with other countries, including the RMI, to develop guidelines for the Paris Agreement realize effective greenhouse reductions by all parties.

The RMI, as you know, is a low-lying nation which is very vulnerable to the adverse effects of climate change. And they have been raising this issue with great eagerness. ... The area of climate change was one of seven areas decided for enhance cooperation between Japan and Pacific island countries, including the RMI At the seventh Pacific Island

Leaders Meeting, which was held in Japan in 2015. Climate change is most likely to continue to be one of the very focused areas of cooperation between Japan and Pacific island countries at the eighth Pacific Island Leaders Meeting, which will take place in Japan in mid-May this year. This meeting is a summit-level meeting between Japan and 14 Pacific island countries. So, leaders from these countries will come to Japan to discuss many common issues. This summit-level meeting has been held every three years since 1997. So, this year Japan will host the eighth meeting in Fukushima. This is a very, very important conference between Japan and the 14 Pacific island countries.

HG: Lastly, if residents here had seven days to spend in Japan, what cities or prefectures do you recommend they spend their time in?

AHM: If you visit Japan, for the first time, I would recommend you to travel the so-called Golden Coast, which means Tokyo to Osaka, by bullet train. You can stay in Tokyo for two days. As you know, Tokyo is a very unique city. Why? That city has two faces: One face is a very modern face; the other is a very historical face. It's very unique. Of course, this is the capital city of Japan and center of politics. And then, after Tokyo, you can go to Hakone. Hakone is very famous for its hot springs. So you can experience hot springs there.

After that, you can move to Osaka. On the way to Osaka, you can see Mt. Fuji and Haman-ko—Like Hamana. And then you can get to Osaka. After that, you go to Kyoto and Nara and back to Osaka. You would go back to Kwajalein from Osaka. This is the typical course for the beginner.



STEM SPELLS SCIENCE SUCCESS

HOURLASS REPORT

Kwajalein's science and engineering professionals brought hands-on learning to George Seitz Elementary School students at the STEM Festival March 14.

Event coordinator Heather Miller designed the educational celebration of STEM [science, engineering, math and technology] to generate excitement about STEM topics and careers.

"The main goal was to generate excitement about STEM topics," said Miller. "I would say that goal is achieved."

Students spent the morning learning about environmental and biological science studies, optics, electronics and aviation during interactive workshops and short presentations given by personnel from MIT Lincoln Laboratory, the U.S. Army Corps of Engineers, DynCorp International and Kwajalein's Reagan Test Site.

Students also tried out activities de-

signed to teach kids about radar technology, plastics in the ocean and robotics.

Fifth grade instructor Misti French, an event activity coordinator and STEM curriculum advocate, agreed with Miller.

"I really want kids to be aware of the different types of careers that are out there," said French. "You have so many options in STEM for careers. It's not just doctor-pilot-lab scientist. There are many talented people here who can share their work firsthand."

Professionals were enthusiastic about sharing their knowledge with the young students, and Kwaj kids enjoyed the demos and the chance to learn from Kwajalein's science and engineering community.

"My favorite quote that I heard was from a third grader watching an infrared camera demonstration," said Miller. "He said that was so satisfying!"



MIT Lincoln Laboratory's Alex Divinsky demonstrates drone mechanics during the STEM Festival.

GUIDE TO AFN TELEVISION CONTENT ON USAG-KA

HOURLASS REPORT

Here's a handy map to all 17 AFN TV channels available to USAG-KA residents.

- 14-1: Local Roller (LOCAL) / Roi, 45-1, 2
- 14-2: Local Weather (LOCAL) / Roi, 51-1, 19
- 14-3: AFN News (LIVE) / Roi, 39-1, 15**
- 14-4: AFN Prime Atlantic (DELAYED 14 hours)
- 17-1: AFN Sports (LIVE) (HD) / Roi, 26-1, 13**
- 17-3: AFN Spectrum (DELAYED 21 hours)
- 17-4: AFN Movie (DELAYED 21 hours)
- 17-5: AFN Family (DELAYED 21 hours)
- 20-1: AFN Sports-2 (DELAYED 14 hours)
- 20-2: DTS (LIVE)
- 20-3: AFN Prime Pacific (LIVE) / Roi, 40-1, 8**
- 20-4: AFN Movie (LIVE) / Roi, 27-1, 23**
- 23-1: AFN Prime Atlantic (LIVE) / Roi, 36-1, 21**
- 23-2: AFN Spectrum (LIVE) / Roi, 31-1, 18**
- 23-3: AFN Family (LIVE) / Roi, 32-1, 5**
- 23-4: AFN Sports 2 (LIVE) / Roi, 29-1, 11**
- 29-1: Kwajalein TV (LOCAL) / Roi, TBD

There are eight AFN channels that we receive via satellite from the AFN Headquarters in California. They are in bold type above. Those eight channels are broadcast live.

Five of those channels (Prime Atlantic, Spectrum, Movie, Family, Sports 2) also run in a delayed format on five separate channels so as to align prime time programming with the evening hours locally on Kwajalein Atoll. It's the exact same content—only delayed. Those delayed channels are in italic type above.

The other off-island live channel is a separate, special channel: AFN DTS (Direct to Sailor), which exists in its own category. It is on 20-2. It is underlined above.

Finally, there are also three local channels: Kwajalein TV, the new local access channel; the roller channel; and the weather channel. They are listed in normal type above.

AFN provides programming schedules for the eight live channels coming in from AFN-California and also for the one DTS (Direct To sailor) channel. How do you find out what the programming schedules are? Go straight to the source to get the most accurate, real-time programming for these channels at **www.myafn.net**. *Note, AFN does not provide scheduling information for the lo-

cally delayed channels or the local channels (KTV, roller, weather).

Be sure to click "Current Time Zone" at the top right of the myafn.net homepage, and select the Kwajalein Atoll time zone in the dropdown box. In the AFN TV menu at left, click on "Schedules," and you're all set. Just select the date you're looking for by hitting the calendar icon at the top right of the screen, and all programming for all channels are presented.

The one exception is the AFN DTS (Direct to Sailor) channel. To find scheduling for the DTS channel, go back to the homepage. Click "DTS SCHEDULES" under the AFN TV heading at the left of the page. Under the "DTS" heading (not the "AFN" heading), select the Excel file that displays the time period you are researching. In the Excel spreadsheet that opens, make sure you have selected the "DTS Pacific" page at the bottom of the sheet. There is your programming for the entire week. Understand that there is a five-hour difference in time that you must take into consideration. For example, midnight on Kwajalein is 5 a.m. on the spreadsheet.

If you have questions, call AFN Kwajalein at 53743 or 52114.



www.army.mil/kwajalein

Check out USAG-KA's new website for garrison and community news.





EASTER 2018 EVENTS CALENDAR

Easter weekend draws near! Whether you are new to the Kwaj community or visiting the garrison, you are invited to join the community at one of Kwajalein's festive Easter celebrations.

RELIGIOUS OBSERVANCES

THE ISLAND MEMORIAL CHAPEL INTERDENOMINATIONAL CONGREGATION

Good Friday Service
March 30 at 6:15 p.m. in the REB.

EASTER SUNRISE SERVICE

6:30 a.m. at Emon Beach.
Bring a friend! The community is welcome to attend a Sunrise Service at Emon Beach. Enjoy the ceremony, sunrise and a beachside brunch.

IMC 11 A.M. EASTER MORNING SERVICE

Join the interdenominational service at Island Memorial Chapel.

CATHOLIC HOLY WEEK AND EASTER SERVICES

The community is welcome to attend Holy Week and Easter Services in the main sanctuary of the Island Memorial Chapel.

PALM SUNDAY MASS

March 25 at 9:15 a.m.

MASS OF THE LORD'S LAST SUPPER

Thursday, March 29 at 7 p.m.

ADORATION OF THE CROSS

Friday, March 30 at 7 p.m.

EASTER VIGIL

Saturday, March 31 at 7 p.m.

EASTER MORNING MASS

Sunday, April 1 at 9:15 a.m.

The Kwajalein Hourglass

ISLAND EGG HUNTS

AAFES EASTER EGG HUNT

**SUNDAY, MARCH 25 AT 9 A.M. IN THE PXTRA
OPEN TO KWAJ KIDS AGED 12 AND UNDER**

Bring a basket to the PXtra and prepare to hunt for eggs filled with candy and gift card vouchers! The two lucky egg hunters who find the special grand prize gold and silver eggs will win two mega Easter baskets from AAFES!

MWR EASTER EGG HUNT

**SUNDAY, APRIL 1, 2018, 9 A.M. - NOON
AGE-GROUP SPECIFIC EGG HUNTING FIELDS**

Grab your basket and come for an egg-citing Easter Celebration brought to you by MWR! Families and young children are welcome to collect eggs on one of our age-appropriate fields. Enjoy the thrill of the egg hunt and then come play! Try out the slip and slide and bounce houses or relax at one of craft centers! Snacks will be available for purchase.



Want to learn more?
For more information, contact us at
one of the numbers below!

AAFES: 5-3542

MWR: 5-3332

The Island Memorial Chapel: 5-3505

WEEKLY WEATHER LOOKOUT

RTS WEATHER STATION STAFF

WEATHER DISCUSSION: We received 4.08 inches of rainfall on March 17 which is a record for rainfall this month since records began in 1945. We have received 9.17 inches of rainfall in March, or 380 percent of normal. Areas of Pohnpei received over 30 inches of rainfall in two days last week when 96W was stationary on top of the island. This caused a number of mudslides in the hills. Not expecting the upcoming days to be as rainy with return to normal conditions. Stronger trade winds are moving into the RMI today from the north, as the Inter Tropical Convergence Zone drifts southeasterly. Expect to see more sun and wind over the next seven days as atmosphere returns to normal in our area.

SATURDAY/SUNDAY/MONDAY FORECAST: Winds ENE at 15-20 knots, with widely scattered showers.

MID-WEEK FORECAST: Widely scattered showers early Tuesday-Wednesday, possible increase to scattered showers Thursday and Friday.

AFN 99.9 THE WAVE

The USAG-KA Public Affairs Office launched the official return of local AFN radio. Tune in and chill out with AFN 99.9 THE WAVE during the work day from 7-9 a.m., 11 a.m.-1 p.m. and 4-6 p.m. Tuesday through Saturday for local news, announcements and musical entertainment. On radio frequency FM 99.9 and on the Roller Channel! *All requested community announcements must be submitted to and approved by the USAG-KA PAO. Email: nikki.l.maxwell.civ@mail.mil



SHARP
SEXUAL HARASSMENT/ASSAULT RESPONSE & PREVENTION

Sexual Harassment/Assault Response and Prevention (SHARP) Contact Information
CW3 Dave Casbarra

SHARP Victim Advocate

Work: 805 355 3421 • Home: 805 355 1731

USAG-KA SHARP Pager: 805 355 3243/3242/3241/0100

USAG-KA SHARP VA Local Help Line: 805 355 2758

DOD SAFE Helpline: 877 995 5247

SUN-MOON-TIDES				
	SUNRISE SUNSET	MOONRISE MOONSET	HIGH TIDE	LOW TIDE
SUNDAY	6:51 a.m. 7:00 p.m.	1:08 p.m. 1:04 a.m.	9:58 a.m. 3.1' 11:24 p.m. 2.2'	2:59 a.m. 0.9' 5:13 p.m. 1.0'
MONDAY	6:50 a.m. 7:00 p.m.	2:07 p.m. 2:03 a.m.	12:11 p.m. 3.1' -----	5:10 a.m. 1.2' 7:17 p.m. 0.7'
TUESDAY	6:50 a.m. 6:59 p.m.	3:06 p.m. 3:00 a.m.	1:30 a.m. 2.5' 1:40 p.m. 3.6'	7:13 a.m. 0.9' 8:20 p.m. 0.2'
WEDNESDAY	6:49 a.m. 6:59 p.m.	4:04 p.m. 3:55 a.m.	2:28 a.m. 3.1' 2:36 p.m. 4.0'	8:18 a.m. 0.4' 9:03 p.m. -0.3'
THURSDAY	6:49 a.m. 6:59 p.m.	5:01 p.m. 4:48 a.m.	3:09 a.m. 3.6' 3:19 p.m. 4.4'	9:05 a.m. -0.1' 9:38 p.m. -0.6'
FRIDAY	6:48 a.m. 6:59 p.m.	5:56 p.m. 5:38 a.m.	3:45 a.m. 4.1' 3:56 p.m. 4.7'	9:45 a.m. -0.5' 10:11 p.m. -0.8'
MARCH 31	6:48 a.m. 6:59 p.m.	6:49 p.m. 6:25 a.m.	4:17 a.m. 4.4' 4:30 p.m. 4.8'	10:21 a.m. -0.8' 10:41 p.m. -0.9'

U.S. Army Garrison—Kwajalein Atoll Volunteer Recognition Event



Kwajalein Jr.-Sr. High School MP Room
Saturday, March 31, 6:30-8:30 p.m.

The first USAG-KA Volunteer Recognition Event is scheduled for March 31, 2018 at the Kwajalein High School MP Room from 6:30-8:30 p.m. Recipients of the certificates have been nominated as individuals and in group categories. Everyone is invited to attend and show their appreciation for the time, talent and efforts offered by volunteers to improve our community.

Captain Louis S. Zamperini Dining Facility

*MENU CURRENT AS OF MARCH 23

LUNCH

Sunday	Monday	Tuesday	Wednesday	Thursday	Friday	March 31
Roasted Turkey	Roasted Turkey	Braised Beef Cube	Orange Chicken	BBQ Ribs	Sweet & Sour Pork	Chicken Fajitas
Prime Ribs	Cornish Hen	Basmati Rice	Vegetable Lo Mein	Mac & Cheese	Swiss Steak	Beef Fajitas
Roasted Potatoes	Mixed Vegetables	Baked Eggplant	Oriental Stir Fry	Red Beans & Rice	Mushrooms	Spanish Rice

DINNER

Sunday	Monday	Tuesday	Wednesday	Thursday	Friday	March 31
Grilled Steak	Chicken Parmesan	Breaded Pork Chop	Chinese Five Spice Chicken	Chicken Broccoli Alfredo	Grilled Chicken Breast	Roast Pork
Fried Shrimp	Baked Salmon	Yankee Pot Roast	Parmesan Baked Fish	Baked Pork Chop	Pork Adobo	Baked Trout
Basmati Rice	Steamed Broccoli	Mashed Potatoes	Oven Glow Potatoes	White Rice	Fried Rice	Mashed Potatoes

COMMUNITY CLASSIFIEDS

HELP WANTED

To research and apply for government employment opportunities on U.S. Army Garrison-Kwajalein Atoll and worldwide, visit www.usajobs.gov.

Job opportunities are available at RTS Weather Station. For full details and to apply see <http://www.aq-ast.com/careers> req.#42.

FCE Benefits Administrator position. For more information please contact Diane Peters at (805) 355-0939 for more information.

San Juan Construction is currently hiring for multiple projects on Kwajalein. If your contract is ending and you are interested in continued work on Kwajalein, please see our website at www.sanjuanconstruction.com for opportunities and to apply or call Tim Hughes, Corporate Recruiter at 970-497-8238.

Space Fence is hiring for multiple on-island positions. Inquire with Leslie.Halenar@lmco.com.

Community Bank currently has an opening. The position is available to on-island hires. Some banking experience is required. Please apply at dodcommunitybank.com or call Stephanie Prudence, 5-2152.

HEALTH WORKSHOPS

Biggest Loser Contest! Patterns are hard to break. Take control! Grab a friend, coworker, neighbor and join the challenge. Weekly confidential weigh-ins, lunch & learns. \$\$\$ Prizes, bragging rights and improved health!

Enrollment meeting Tuesday, April 3 from noon-12:30 p.m. in the Hospital Conference Room. \$5 Entry fee. If you want to join the challenge and can't make the meeting, call 5-5362.

Stressed Out? Issues at work or at home? Feeling disconnected? Call 5-5362 and set up an appointment. Get support working through whatever obstacle life is throwing at you.

COMMUNITY NOTICES

KRS ES&H moved to Facility 1017 February 7. Contact numbers will stay the same. Roi KRS ES&H Office is at Facility 8060, office 146.

The Family Pool will close on Sunday, March 25 at 2:30 p.m. for the KST Swim Meet.

Calling all junior and senior high school students to join us for Youth Fellowship! Middle School High School Youth Fellowship will meet at 6:30 p.m. in the REB on March 26. Contact Wes or Cher Kirk or Alex Coleman.

There is a trip planned to go to the Gueegee Fellowship (Bible study, worship & singing) on Tuesday, March 27. Leaves Kwaj at 6 pm and returns at 10 p.m. All are welcome to attend. Please call Cherie at 5-9444.

Christian Women's Fellowship Prayer Quilt Ministry is looking for quilters! Meets Tuesdays, 6:30-8 p.m. in the REB. We are accepting donations of fabric (long pieces) for lap quilts. Contact the church office at 5-3505.

Seeking donations for the Book Fair! Please donate gently used or new books (children, teen and adult), puzzles or games for the Book Fair to be held at George Seitz Elementary School Wednesday, April 11 and Thursday, April

12. Donations can be dropped off at the Elementary School office now through April 6.

E-wareness. Spill Notification. In the event of a spill of a hazardous material, waste, or petroleum product: Recognize – If it is safe, identify the material. Retreat – Evacuate. Keep others out. Report – call 911.

Women's Bible Study Opportunities. Tuesday, 9:30-11 a.m. "Book of John," at Qtrs. 405-B Taro, March 20-May 22 (for more information call Sally Bulla at 5-9804 or email: sagebulla@gmail.com). Thursday, 9:30-11:30 a.m. "Uninvited," at house 430-B on (3/8) then 461-A Poinsettia (March 15-April 5). Thursday, 6:30-8:30 p.m. "Uninvited in the REB. Call Jill Grabowski at 5-3300 for more information.

Tje Kwajalein Hospital and Dental Clinic hours of operation are Tuesday through Saturday from 7:30 a.m. to 4:30 p.m. Emergency Services will be available 24/7 after hours, on weekends and holidays. For inquiries or to schedule an appointment, call the Front Desk at 5-2223 or 5-2224.

Salon Notice. If you have an appointment scheduled at the salon in May, June, or July please call 5-3319 with the following information: Name, Service you are scheduled for, date of service and phone number. Scheduling software is down and we are working to avoid conflicts. Thank you!

E-Wareness: Eniwetak Conservation Area (ECA). The ECA was established to promote conservation of wildlife and coral reef resources. Visitors are not allowed without consent from USAG-KA. For more information call DI Environmental at 5-1134.

WATCH YOUR SPEED!

The Kwajalein Provost Marshal's Office is watching you. Please always remember to adhere to the posted speed limits in residential and construction areas when operating motorized vehicles.

WEEKEND MOVIES

YUK THEATER, KWAJALEIN

Saturday, March 24
The Shape of Water (R)

Sunday, March 25
Coco (PG)

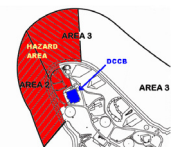
Monday, March 26
The Post (PG-13)

TRADEWINDS THEATER, ROI

Saturday, March 24
Thor: Ragnarok (PG-13)

Sunday, March 25
Jumanji: Welcome to the Jungle (PG-13)

**All features begin at 7:30 p.m.*



Security and Access Control will be conducting a small arms range operation Wednesday, March 28 through Friday, March 30 from 8 a.m. to 5 p.m. Please observe the red flag hazard areas. If you have any questions please contact Capt. Dirk Roesler at 5-8990

Café Roi

*MENU CURRENT AS OF MARCH 23

LUNCH

Sunday	Monday	Tuesday	Wednesday	Thursday	Friday	March 31
Beef Stroganoff	Braised Beef Cubes	Orange Chicken	Sweet & Sour Roast Pork	Fried Catfish	Chicken Fajitas	Swedish Meatballs
Baked Cornish Hen	Fried Fish	Beef and Broccoli	Swiss Steak & Mushrooms	BBQ Ribs	Beef Fajitas	Baked Pork Chop
Mashed Potatoes	Potatoes Au Gratin	Spring Rolls	Pesto Pasta	Sweet Potatoes	Quesadillas	Oven Glow Potatoes

DINNER

Sunday	Monday	Tuesday	Wednesday	Thursday	Friday	March 31
Chicken Parmesan	Breaded Pork Chops	Braised Beef	Steak Night	Beef Stew	Cantonese Spare Ribs	Fried Shrimp
Roast Beef	Yankee Pot Roast	Parmesan Baked Fish	Baked Potato Bar	Brown Rice Pilaf	Fried Chicken	Roast Beef
Pesto Cheese Tortellini	Mashed Potatoes	Oven Glow Potatoes	Cauliflower & Broccoli	Glazed Carrots	Mashed Potatoes	Twice Baked Potato



DI Archeology hosted a tour for visiting LOGCAP IV personnel and Kwajalein Jr.-Sr. High School Students from Christi Cardillo's U.S. History II class. 1) Caitlin Gilbertson talks shop with DI personnel March 14. 2) Grant Day shows the class the inside of a gigantic sea turtle shell. 3) A visiting member of a Japanese bereavement group pays her respects to Japanese casualties of war at a memorial ceremony at Kwajalein's west end. 4) USAG-KA Host Nation Specialist Mike Sakaio, left, and Host Nation Director Maj. Dan Lacaria embrace their inner Irish during the quarterly Kwajalein DoD hail and farewell party March 14 at Emon Beach. 5) Japanese dignitaries and military personnel show their respect for fallen Japanese soldiers of the 1944 Operation Flintlock battle.

