

VOLUME 58 NUMBER 44

NOVEMBER 4, 2017

THE KWAJALEIN HOURGLASS

THIS WEEK

BIG RED VICTORY

RED TEAMS SWEEP SOCCER AWARDS - P 2

TRICKS AND TREATS

ON KWAJ HALLOWEEN NIGHT - P 3

SPOOKY SIGHTS

AROUND THE ATOLL - P 4

BASS PLAYER DAVE ARDREY JAMS
OUT WITH KWAJ BAND BALLISTIC
LOVE AT THE VETS HALL HALLOWEEN
CELEBRATION OCT. 28.

 JESSICA DAMBRUCH

2017 KWAJALEIN SOCCER CHAMPIONS CROWNED

HOURLASS REPORT

2017 Kwajalein Soccer League play wrapped up with a bang last week. First seed "Nutmeg ... Sub!" defeated second seed Spartan Men 2-0 Wednesday, Oct. 25 to seal the squad's domination in the Men's League standings. Meanwhile, third seed Spartan Co-ed Red beat fourth seed Spartan Co-ed White 4-2 in the Kwajalein Co-ed League Thursday, Oct. 26. Highlights follow below.



📷 U.S. Army photos by Jordan Vinson, Derek Finch

CLOCKWISE FROM BOTTOM LEFT: 1) The Spartan Co-ed Red team gathers for a group victory photo after their championship win Oct. 26 on Kwajalein. 2) "Nutmeg ... Sub!" team members pose with their beloved coconut trophy Oct. 25. 3) Spartan Men's Isaiah Arrington defends against "Nutmeg ... Sub!" forward Paul McGrew. 4) Co-ed Spartan Red's Matai McCollum drives down Spartan Co-ed White's backfield.

2017 KWAJALEIN SOCCER RECORDS

Men's League

	<u>Win</u>	<u>Loss</u>	<u>Tie</u>	<u>Points</u>
Nutmeg...Sub!	8	1	0	23
Spartan Men	5	4	0	15
Kwaj Rejects	4	3	1	13
KFC	3	5	0	9
Bako	0	7	1	1

Women's League

	<u>Win</u>	<u>Loss</u>	<u>Tie</u>	<u>Points</u>
Spartan Coed Red	4	4	1	14
Spartan Coed White	2	5	2	10
Spartan Women	8	0	0	24
Go Green Go	5	2	1	16
K.A.T.	0	8	0	0

THE KWAJALEIN HOURLASS

The Kwajalein Hourglass is named for the insignia of the U.S. Army 7th Infantry Division, which liberated the island from the forces of Imperial Japan on Feb. 4, 1944.

The Kwajalein Hourglass is an authorized publication for military personnel, federal employees, contractor workers and their families assigned to U.S. Army Garrison-Kwajalein Atoll. Contents of the Hourglass are not necessarily official views of, or endorsed by, the

U.S. Government, Department of Defense, Department of the Army or USAG-KA. It is published Saturdays in accordance with Army Regulation 360-1 and using a network printer by Kwajalein Range Services editorial staff.

Phone: Defense Switching Network 254-2114;
Local phone: 52114
Printed circulation: 650
Email:
usarmy.bucholz.311-sig-cmd.mbx.hourglass@mail.mil

Garrison Commander...Col. James DeOre Jr.
Garrison CSM Sgt. Maj. Todd Shirley
Public Affairs Officer Nikki Maxwell
Managing Editor Jordan Vinson
Associate Editor Jessica Dambruch
Media Services Specialist Cari Dellinger



LEFT: Visiting skeleton Max Knochen haunts the treat table at the Adrey family residence on Lagoon Road during Kwajalein's Halloween night Oct. 31.

HAUNTING KWAJALEIN

NEWS/JESSICA DAMBRUCH

Island residents turned out in their finest ghostly attire in a daylong celebration of all things spooky Oct. 31.

Halloween is a unique community-wide event on Kwajalein. USAG-KA extends trick-or-treating privileges to all public school students. Island residents

can also sponsor a limited number of visitors to trick-or-treater from Ebeye. Whether they provide a bright porch light or don a simple mask to liberate homes of their treats, everyone contributes to the experience of a kwajical Halloween.

Long before dusk, a colorful procession of pint-sized ghouls from the Child Development Center swept through the island on a candy-collecting mission. The children haunted the halls of USAG-KA Command headquarters, visited personnel from KRS and Chugach and came away with a treasure in sugar.

The CDC petite daylight haunting was a prelude to the night's festivities. As the sun sank below the lagoon, over 200 trick-or-treaters crept and ran through the shadows to score chocolates and trinkets from the spooky patios of Kwaj.

"I miss my motorcycle," said a scary clown who dresses as Alvin Kelley during the rest of the year.

For October, in lieu of decorating his

chopper, Kelley makes do with a jaunty skeleton poised atop a Kwaj-style gooseneck bike to haunt the front yard of his quarters.

The evening sidewalks were full of fantastic superheroes, inflatable Sumo wrestlers, pirates, princesses, video game heroes, robots and supervillains. The Kwajalein Hourglass also spotted a dapper man with an umbrella and welder's goggles who identified himself as a time traveler—and promptly disappeared.

"Did you know that Wednesday Adams was born in Kwajalein Atoll?" asked the leader of a polite gang of teens in goth makeup as they converged upon a bowl of treats. It's true: Actress Lisa Loring is the atoll's original spookster.

Perhaps it is one small mime who summed up the evening best. Arriving in one yard to collect candy, she beamed a smile and quietly offered a handwritten sign: "Trick-or-Treat!"

U.S. Army photos by Jessica Dambruch



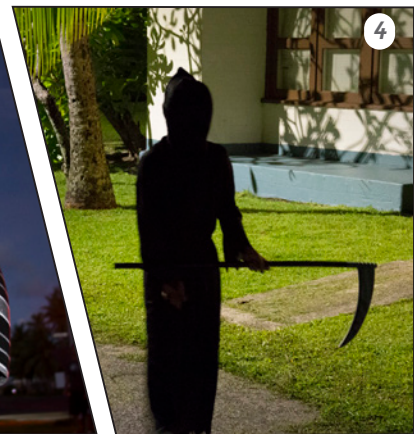
1



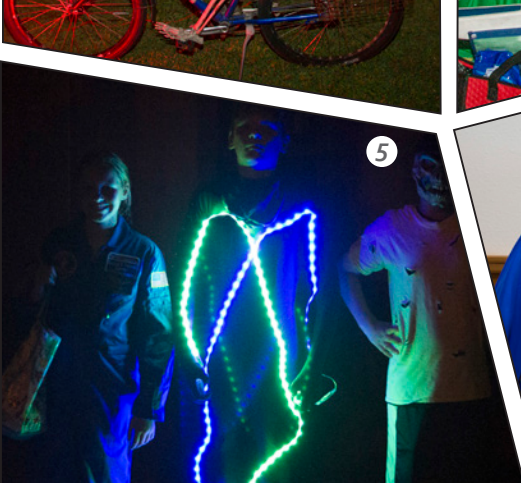
2



3



4



5



6



7

TOP ROW FROM LEFT: 1. The skeletal rider who resides in front of the Kelly residence on Lagoon Road. 2. Meg and Heather Ardrey treat a visiting ninja to candy corn on Halloween night. 3. Visiting trick-or-treaters pause for a photo. 4. This small grim reaper was spotted on Heliotrope Road. **BOTTOM ROW FROM LEFT:** 5. Three candy collectors are radiant in the spectral glow of an LED-suit. 6. A dynamic duo: Masquerading as DC Comics' Joker, Maj. Daniel Lacaria is no match for son Erik, dressed as Batman. 7. Daylight CDC trick-or-treaters visit Chugach receive treats from Benjamin Potter, Joe McElvy, Julie Jones and Kelly Ambrose.

HALLOWEEN CHARACTERS COME OUT TO PLAY

Halloween weekend on Kwajalein lures out some of the best-dressed exorcists, evil clowns, superheroes and princesses. Here are some highlights from the Vets Hall Halloween bash Saturday night and various trick-or-treat events held on the garrison earlier this week.

Free loving
hippie

Wayne
and Garth

Link, Legend
of Zelda

Bob
Ross

Candy
corn
witch

Betelgeuse

Dr. Death

Bojack
Horseman

Capt.
America

Leonardo
TMNT

Raphael
TMNT





📷 Courtesy of Sandra Garrison

LEFT: Roi resident Kari McCormick-Junod carves a stylized moon man into her pumpkin during the annual pumpkin carving event Friday, Oct. 27 at the Outrigger. **Right:** Island visitor Cassie Fries shows off her jack-o'-lantern.



📷 Courtesy of Sandra Garrison

LEFT: Roi resident Dan Gunter, left, and Kwaj visitors Jeff Robinson and Ray Abbott carve pumpkins with their steely knives. **RIGHT:** KJ Arnold concentrates on perfecting the art of the jack-o'-lantern carving.



📷 U.S. Army photos by Jessica Dambruch

Ballistic Love conjur up derelict dance moves among the crowd of killer pigs, pirates and scarecrows during this year's Halloween bash at the Vets Hall Oct. 28.

The Kwajalein Hourglass



A BRIEF HISTORY OF AFN-KWAJALEIN

COMMUNITY CONNECTION

By Dilip Saha

AFN-Kwajalein Broadcast Engineer

Shortly after the 1944 invasion of the Marshall Islands during WWII, a joint military radio station was established on Kwajalein Island. By 1945, WXLG radio was broadcasting 50 watts of Armed Forces Radio Services (AFRCS) programming on a regular schedule. In 1954, WXLG started broadcasting all over Kwajalein Atoll with a new 1,000-Watt AM transmitter on 1224 KHz AM.

In 1968, a second AFRS radio station, FM100, hit the airwaves with quality music for the growing population of the island. The programming was played back on a series of tapes provided by the AFRTS Broadcast Center.

Television first came in Kwajalein in 1977, when AFRTS-Kwajalein began broadcasting on Channel 9. In 1985, after the installation of a SATNET service satellite dish and a second transmitter, channel 13 came on-air with real-time news and sports.

On Roi-Namur, in addition to regular AM radio service, FM radio service was added through a repeater. A broadcasting TV program started through a closed-circuit television system, as well. The expansion of service created the Central Pacific Network (CPN), the smallest network in the Army Broadcasting Service. From then on, CPN was broadcasting AM and FM Radio program 24 hours a day, 7 days a week. Television was at that time was a mix of tapes and satellite programming.

In 1993 CPN, equipped with cameras, editing equipment, and a small studio started producing local television programs like "Windows on the Atoll", Kwajalein-images and local public services announcements. The local program "Windows on the Atoll" made its debut in December 1995 but was discontinued the following year, having produced only six episodes. Video coverage of local events and public service announcements were aired occasionally until "Windows on the Atoll" was again reintroduced as a regular feature in 1999. Local programming like "Windows on

the Atoll," along with local FM radio programs like "The Morning Show" and "The Weekend Show" would continue for nearly eight years.

In 2002, CPN was renamed as AFN-Kwajalein to make it consistent with other stations of Army Broadcasting Service around the world. The Direct-to-Sailor (DTS) satellite service was added, and a few more radio and TV program were made available.

Shortly after rebranding itself AFN-Kwajalein, the station had a problem: AFRTS discontinued regular satellite service in the Central Pacific, forcing the broadcast center to again send pre-recorded tape programming to Kwajalein to supply family programming.

In 2002, full AFRTS service was restored at Kwajalein through an internet delivery arrangement called video over IP, with the digital content's originating point as Huntsville, Alabama. AFN-Kwajalein installed a broadband UHF system and added eight

UHF TV channels in addition to two existing VHF channels. Moreover, the cable TV system in Roi-Namur was extended.

Ultimately the internet delivery service was not successful: There were frequent program failures and reported

audience dissatisfactions due to network connection problems. And so in 2009 the station again switched over to AFRTS satellite services for rebroadcasting all AFN program.

In the meantime, much of the old equipment—all of which was now 18-35 years old—had become unusable and declared obsolete. And in 2007 much of the staff at AFN-Kwajalein departed after the local TV and radio programs were discontinued.

As analog TV broadcasting was becoming obsolete, AFN-Kwajalein began the digital TV transition in 2013. On Jan. 16, 2014 AFN-Kwajalein completed the transition from analog TV broadcasting to USA Digital TV broadcasting for all its TV channels. Residents now have crisp, quality TV programming and audio with no antenna aberrations like hosting or reflection and no jitter or noise due to weak signals.

More changes are on the horizon. Since last year the DOD's Defense Media Activity and AFN HQ has stated that high-definition AFN programming is coming to garrisons throughout the Pacific, including U.S. Army Garrison-Kwajalein Atoll. This change will provide viewers with much more dynamic experience including much sharper and crisper image detail. Accordingly, AFN-Kwajalein has taken on the project of preparing for the HD transition. More information will be sent out to the community when this transition moves into high gear. If residents have any questions, they may contact AFN-Kwajalein by calling 53743 between 7:30 a.m. and 4:30 p.m., Tuesday through Saturday.



1945: Kwajalein radio personalities Dennis Day, Margaret Benning and Johnnie Galbrath broadcast from WXLG.



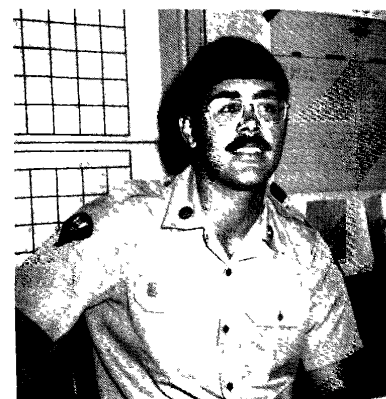
THIS WEEK IN KWAJALEIN HOURGLASS HISTORY

OLDER THAN 14 YEARS OF AGE

Who Does What On Kwajalein ???



Lucia A. Waddell, Secretary to
Communications Manager, Kentron



SP4 Ron Hensley - Administrative
Clerk, SAFSEA.

Cars Available to Purchase

The civilian population of Kwajalein Missile Range may now purchase automobiles from American Motors, Chrysler, and General Motors from an on-site representative.

The sale of automobiles to civilians will not be transacted through the Army/Air Force Exchange Services (AAFES). The terms and conditions of automobile sales to civilians are a matter of concern between the purchaser, the local sales representative, the dealer agency and the manufacturer

From Nov. 1, 1972



PDR Manager

Raymond L. Kennedy was named manager of the Pacific Dining Room, effective Oct. 15. A native of Oregon and former U.S. Army warrant officer, Raymond has had 30 years' experience in food services. Previously, he worked as cafeteria manager at Northwest Christian College, Eugene, Ore.

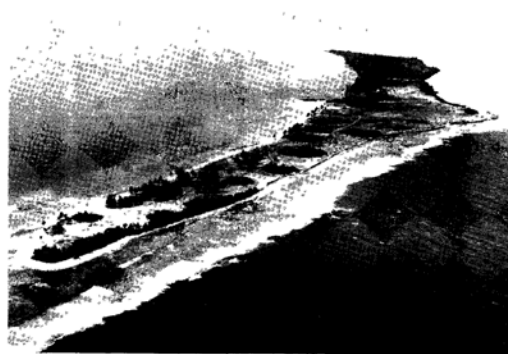
From Oct. 31, 1980



Page 4

Tuesday, November 2, 1976

Over 1,000 Acres Of Effort



Bigej, one of the prettiest islands in the Kwajalein Atoll, is going to be even prettier.

Through an agreement with the Trust Territory of the Pacific, a joint KIR/Marshall Islands District project has started that will culminate in the planting and replanting in the mid-atoll corridor of the Kwajalein Atoll of eleven islands.

Bigej is the first island to be transformed into a productive copra-producing plantation. Global Associates has completed the clearing and grading and in the next few months the Trust Territory agriculturalist will plant approximately 8,000 new palm seedlings on Bigej, with 28 feet between trees.

It will take approximately five years for the trees to produce coconuts, but these trees are special, having been imported from the Island of Yap. The special Yap trees produce a nut that is almost twice the size of the coconuts we are familiar with here on Kwajalein. Their large size makes them ideal for copra production of for just plain eating and drinking.

For some of you that may have been harboring some fears that the beauty of the atoll was being marred by men and machines -- take heart -- Bigej and 10 more atoll islands are being face-lifted and made more productive for the Marshallese residents of the Kwajalein Atoll.

As the information becomes available, the Hourglass will be keeping its readers up to date on the progress of the improvements.

From Nov. 2, 1976

The Fastest Ways to Reach Kwaj

LD 1731 IS AN IMPORTANT NUMBER -- If you expect to receive a personal telephone call from the Mainland, there are some important points that people CALLING YOU should know.

From the Mainland or locations other than the Island of Oahu (Honolulu), persons should ask their local operator for "KWAJALEIN, MARSHALL ISLANDS, LD 1731."

LD 1731 is the number of the Kwajalein switchboard, and should be used in the conversation with the local operator on the OUTSIDE CALLER'S END. The Honolulu operator will connect the OUTSIDE CALLER (from the Mainland or wherever) with the Kwajalein switchboard (LD 1731), completing the call.

Station-to-station calls begin when the Kwaj operator answers. Person-to-person calls begin when the individual being called answers the phone.

It is a good idea to send the persons who might have the opportunity to call you, both your residence and business telephone numbers, as well as the times you will be at either place. Don't forget to tell them about the time difference. In some emergency situations, people tend to forget about the time difference when making long-long-distance telephone calls.

IT'S KWAJALEIN, MARSHALL ISLANDS, NOT APO SAN FRANCISCO 96555 IN THIS CASE -- There is a second way for you to be reached in a hurry while you are living on Kwajalein. That way is by telegram.

There are no commercial telegraph facilities here on Kwajalein. However, the KMR Telecommunications Center does have access to commercial telegraph services in Honolulu. All personal telegrams sent or received on Kwajalein are via military circuits and are handled on a non-interference basis AFTER official traffic.

You should write to those persons who might send you a telegram and tell them that your TELEGRAM ADDRESS IS YOUR NAME, YOUR ORGANIZATION, KWAJALEIN, MARSHALL ISLANDS.

The reason the APO post office address is NOT used in a telegram address is the telegram being sent to you will wind up in the mail at APO San Francisco...literally...and then you will get the telegram when the mail plane gets here.

It is highly recommended that persons who have emergency messages to SEND TO YOU here on Kwajalein go through THEIR LOCAL RED CROSS CHAPTER. It is a lot less hassle and sweat that way.

NOTICE TO PARENTS

Department of Defense Instruction 1330.13 and Commander-In-Chief Pacific Instruction 1700.1F specifically state that children 12 and under must be accompanied with, and seated with, a parent during all USO and DOD sponsored shows. KMR has been cited in violation of these special instructions.

On several occasions, announcements have been made on the radio and in the Hourglass of this requirement. This is being ignored by most parents. The large congregation of children in the front of the theater has been very distracting during the shows, not only to the performers but to other members of the audience.

In order that KMR will continue to receive USO AND DOD shows, compliance with the above cited instructions is required.

CMA Richard L. Foote
USO Project Officer

Adult softball standings

Men's A Division

Team	W	L	T	%
Altair	7	1	0	875
BOB	6	2	0	750
Ebeye Jr	4	7	0	364

B Division

Pago Pago	6	2	0	750
Medicare	5	3	0	625
Bandaid	4	6	0	400
Rayser Heads	2	7	0	222
Sunrise	1	7	0	125

C Division

Reefcocks	6	2	0	750
30 Something	5	2	0	714
Mixed Blood	3	4	0	429
Spartans I	3	5	0	375
Eleu	1	7	0	125

D Division

Hard Corps	6	0	1	928
Slow Break	5	3	1	612
Auger In	4	4	0	500
Brotherhood	2	6	0	250
Spartans II	1	5	0	167

Women's Division

Jab Elkhk	9	0	0	1000
Spartans I	6	3	0	667
Swng Shift	2	7	0	222
Spartans II	1	8	0	111

Coed

Circus Circus	5	1	0	833
Munga's	4	2	2	625
Team Scourge	5	4	0	556
Rockies	3	4	1	465
KWYJIBO	3	6	0	333
Zak Atak II	2	5	1	313

Moonlight

Commandos	7	2	0	778
Beerwolves	4	5	0	444
Tejanos	4	5	0	444
Zak Atak	3	6	0	333

From Nov. 1, 1972

From Nov. 5, 1994



📷 U.S. Navy images by Mass Communication Specialist 3rd Class Jonathan Clay

LEFT: Jennifer Appel, left, and Tasha Fuiava—both Honolulu residents—speak to Sailors onboard the USS Ashland dock landing ship after being rescued early last week in a barren stretch of the Pacific Ocean 900 miles southeast of mainland Japan. **RIGHT:** Appel and Fuiava are approached by a rescuing vessel dispatched from USS Ashland.

NAVY SHIP RESCUES TAHITI-BOUND HONOLULU SAILORS

EXTERNAL REPORT

Amphibious Force 7th Fleet Public Affairs

PACIFIC OCEAN (NNS) — The Sasebo-based amphibious dock landing ship USS Ashland (LSD 48) rendered assistance to two distressed mariners, Oct. 25, whose sailboat had strayed well off its original course.

The mariners, Jennifer Appel and Tasha Fuiava, both from Honolulu, and their two dogs had set sail from Hawaii to Tahiti this spring. They had an engine casualty May 30 during bad weather but continued on, believing they could make it to land by sail.

Two months into their journey and long past when they originally estimated they would reach Tahiti, they began to

issue distress calls. The two continued the calls daily, but they were not close enough to other vessels or shore stations to receive them.

On Oct. 24, they were discovered 900 miles southeast of Japan by a Taiwanese fishing vessel. The fishing vessel contacted Coast Guard Sector Guam who then coordinated with Taipei Rescue Coordination Center, the Japan Coordination Center, and the Joint Coordination Center in Honolulu to render assistance.

Operating near the area on a routine deployment, Ashland made best speed to the location of the vessel in the early morning on Oct. 25 and arrived on scene at 10:30 a.m. that morning. After assessing the sailboat unseaworthy, Ashland crew members brought the distressed mariners and their two dogs aboard the

ship at 1:18 p.m.

"I'm grateful for their service to our country. They saved our lives. The pride and smiles we had when we saw [U.S. Navy] on the horizon was pure relief," said Appel.

Appel said they survived the situation by bringing water purifiers and over a year's worth of food on board, primarily in the form of dry goods such as oatmeal, pasta and rice.

Once on Ashland, the mariners were provided with medical assessments, food and berthing arrangements. The mariners will remain on board until Ashland's next port of call.

"The U.S. Navy is postured to assist any distressed mariner of any nationality during any type of situation," said Cmdr. Steven Wasson, Ashland commanding officer.

Part of U.S. 7th Fleet's forward deployed naval forces out of Sasebo, Japan, Ashland has been on a routine deployment for the past five months as a ready-response asset for any of contingency.

Hourglass Announcement for Public Release of Document Notice of Availability: Draft Expansion of USAG-KA Human Health Risk Assessment Report

U.S. Army Garrison-Kwajalein Atoll (USAG-KA) has completed a fish study to evaluate the long-term impacts that industrial activities may have had on the environment and human health at Kwajalein Atoll. In 2015, fish and water samples were collected from Kwajalein Harbor, Kwajalein Landfill, the Ebeye harbor pier, and Game/trolling fish from up to two miles off shore and analyzed for potential contaminants. As part of the study, a reef fish consumption survey was given to Marshallese workers on Kwajalein, Roi-Namur, Ennubirr and Ebeye in order to understand dietary habits.

The 2015 study determined that concentrations of commonly found industrial contaminants in Kwajalein and Ebeye reef/bottom fish exceed USAG-KA Environmental Standards' (UES) health-based guidelines. These contaminants include polychlorinated biphenyls (PCBs), lead and arsenic. Fillet samples of game/trolling fish (such as tuna, mahi mahi, wahoo) did not contain contaminants that exceed UES health-based guidelines.

Reef fish should not be consumed from prohibited industrial areas. The public is invited to review and comment on the Draft Expansion of USAG-KA Human Health Risk Assessment Report. Copies of the report are available for review at the RMI EPA Offices on Majuro and Ebeye, the Grace Sherwood Library on Kwajalein, and the Roi-Namur Library. Computer users with internet access can view this information at the USAG-KA cleanup website, www.usagkacleanup.info. Questions or written comments regarding the Draft Expansion of USAG-KA Human Health Risk Assessment Report can be directed to Derek Miller; Attn: Draft Expansion of USAG-KA Human Health Risk Assessment Report Comments: USAG-KA DPW, CMR 701, Building 730, 96555-9998. Written comments can also be placed in comment boxes located at the RMI EPA Offices in Majuro and Ebeye, the Grace Sherwood Library on Kwajalein, and the Roi-Namur Library; through the www.usagkacleanup.info comment portal for the Draft Expansion of USAG-KA Human Health Risk Assessment Report; or e-mailed to comments@usagkacleanup.info. A period of at least 30 days is provided for public comment. Comments should be mailed for receipt no later than Dec. 15, 2017.

14th Annual MARSHALLESE TRADE FAIR

KHS MP Room
Sunday, Nov. 12, 3-7 p.m.

Monday, Nov. 13, 9a.m. to 2 p.m.

—Marshallese handicrafts—fish —lobsters— fresh fruits—
vegetables— jewelry—T-shirts and more!

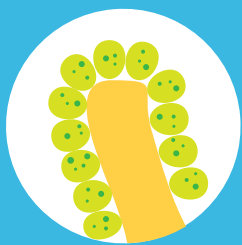
Cash sales only

CORAL BLEACHING

Have you ever wondered how a coral becomes bleached?

HEALTHY CORAL

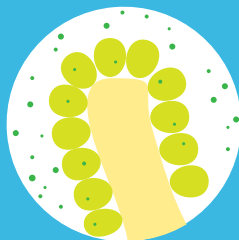
1 Coral and algae depend on each other to survive.



Corals have a symbiotic relationship with microscopic algae called zooxanthellae that live in their tissues. These algae are the coral's primary food source and give them their color.

STRESSED CORAL

2 If stressed, algae leaves the coral.



When the symbiotic relationship becomes stressed due to increased ocean temperature or pollution, the algae leave the coral's tissue.

BLEACHED CORAL

3 Coral is left bleached and vulnerable.



Without the algae, the coral loses its major source of food, turns white or very pale, and is more susceptible to disease.

WHAT CAUSES CORAL BLEACHING?



Change in ocean temperature

Increased ocean temperature caused by climate change is the leading cause of coral bleaching.



Runoff and pollution

Storm generated precipitation can rapidly dilute ocean water and runoff can carry pollutants — these can bleach near-shore corals.



Overexposure to sunlight

When temperatures are high, high solar irradiance contributes to bleaching in shallow-water corals.



Extreme low tides

Exposure to the air during extreme low tides can cause bleaching in shallow corals.



NOAA's Coral Reef Conservation Program
<http://coralreef.noaa.gov/>



www.army.mil/kwajalein

Check out USAG-KA's website for garrison and community news, links to each directorate and other helpful information. Have thoughts or suggestions? Send them to the USAG-KA Public Affairs Office at Nikki.1.maxwell.civ@mail.mil.

WEEKLY WEATHER OUTLOOK

RTS WEATHER STATION STAFF

WEATHER DISCUSSION: Dynamic models are showing a pattern change this week with a dominate ENE trade wind flow established at the surface. The Intertropical Convergence Zone (ITCZ), is currently north of Kwajalein. Best chances of rainfall are Saturday into Sunday as the ITCZ drifts from the north to the south of Kwajalein. The ITCZ continues to be pushed south as the ENE trades get established. Then consistent 10-15 knot trade winds get established.

According to the NWS, there is now a 55 to 65 percent chance of La Niña (cooler equatorial waters) becoming established during late fall or early winter. When La Niña is established we tend to have drier dry seasons, such as during this past year. The NWS Drought Index is still listing Utirik Atoll in the RMI in the severe long term drought category. In Utirik's last seven months (and nine of the past 11 months) precipitation has been below the monthly minimum to meet water needs. With onset of La Niña, this situation on Utirik Atoll is likely to extend through the next dry season. Locally, we received 83 percent of normal for month of October and just a little over average for 2017.

SATURDAY/SUNDAY/MONDAY FORECAST: Widely scattered showers Saturday, Sunday, and Monday. Winds ENE at 9-14 knots Saturday and Sunday, increasing to 12-17 knots on Sunday.

MID-WEEK FORECAST: Isolated showers midweek. ENE trade winds at 10-15 knots Tuesday and Wednesday, decreasing to 7-12 knots towards end of week.



Sexual Harassment/Assault Response and Prevention (SHARP) Contact Information

CW3 Dave Casbarra
SHARP Victim Advocate

Work: 805 355 3421 • Home: 805 355 1731
USAG-KA SHARP Pager: 805 355 3243/3242/3241/0100
USAG-KA SHARP VA Local Help Line: 805 355 2758
DOD SAFE Helpline: 877 995 5247

PASSPORT SERVICES



U.S. Embassy Majuro will conduct American Citizen Services in Bldg. 730 (Garrison HQ) Room 135 Nov. 13 and 14 from 9 a.m. to noon and 1-4 p.m. Only cashier's checks and money orders will be accepted. Passport photos must be recent (within six months) and without eyeglasses. Adult passport renewal, \$110; Adult passport, first time application: \$135; minor passport (age 15 and younger), \$105; Adult passport card, \$30; minor passport card \$15; Consular Record of Birth Abroad, \$100. Questions? Contact Directorate of Host Nation Relations, 52103 or 55325 or visit <https://mh.usembassy.gov/u-s-citizen-services/>

SUN-MOON-TIDES

	SUNRISE SUNSET	MOONRISE MOONSET	HIGH TIDE	LOW TIDE
SUNDAY	6:39 a.m. 6:26 p.m.	7:30 p.m. 7:18 a.m.	4:33 a.m. 4.5' 4:51 p.m. 5.2'	10:34 a.m. -1.0' 11:09 p.m. -1.0'
MONDAY	6:39 a.m. 6:26 p.m.	8:27 p.m. 8:18 a.m.	5:11 a.m. 4.3' 5:28 p.m. 5.1'	11:10 a.m. -0.9' 11:50 p.m. -0.9'
TUESDAY	6:39 a.m. 6:26 p.m.	9:27 p.m. 9:20 a.m.	5:51 a.m. 3.9' 6:08 p.m. 4.8'	11:47 a.m. -0.6' -----
WEDNESDAY	6:40 a.m. 6:26 p.m.	10:27 p.m. 10:22 a.m.	6:34 a.m. 3.5' 6:52 p.m. 4.4'	12:35 a.m. -0.5' 12:26 p.m. -0.2'
THURSDAY	6:40 a.m. 6:26 p.m.	11:27 p.m. 11:22 a.m.	7:23 a.m. 3.0' 7:43 p.m. 3.9'	1:25 a.m. -0.1' 1:11 p.m. 0.3'
FRIDAY	6:40 a.m. 6:26 p.m.	----- 12:18 p.m.	8:28 a.m. 2.6' 8:51 p.m. 3.4'	2:27 a.m. 0.4' 2:10 p.m. 0.9'
NOVEMBER 11	6:41 a.m. 6:26 p.m.	12:25 a.m. 1:11 p.m.	10:15 a.m. 2.3' 10:35 p.m. 3.1'	3:56 a.m. 0.7' 3:52 p.m. 1.3'

Captain Louis S. Zamperini Dining Facility

*MENU CURRENT AS OF NOV. 2

LUNCH	Monday	Tuesday	Wednesday	Thursday	Friday	Nov. 11
Sunday Meat Lasagna Chicken Fingers Macaroni and Cheese	Cajun Pasta Saute Salisbury Steak Balsamic Sprouts	Chicken Cordon Bleu Italian Veggies Harvard Beets	Cuban Roast Pork Chili Lime Black Beans Roasted Papaya	Beef Stroganoff Cajun Catfish Buttered Peas	Jambalaya Roast Beef and Gravy Red Beans and Rice	Swedish Meatballs Squash Casserole Steamed Broccoli
DINNER	Monday	Tuesday	Wednesday	Thursday	Friday	Nov. 11
Sunday Pulled Pork on a Bun Beef Yakisoba Scandinavian Veggies	Chicken Piccata Chili Mac Rosemary Potatoes	Asian Pepper Steak Baked Ziti Steamed Rice	Steak Night Jerk Chicken Baked Potato Bar	German Style Spareribs Honey Glazed Cornish Hen Honey Glazed Yams	Fried Fish Wedge Italian Sausage w/Peppers Wild Garden Rice	Flank Steak Veggie Lasagna Smashed Red Potatoes

COMMUNITY CLASSIFIEDS

Interested in a position with DynCorp International LLC (DI)? Please apply at

<https://jobforms.extranet.dyn-intl.com/ka>

Contact Michael Thomas locally with any Questions. After normal work hours 5-2486 or michael.thomas@dyn-intl.com

HELP WANTED

Visit USAJOBS.GOV to search and apply for USAG-KA vacancies and other federal positions. KRS and Chugach listings for on-Island jobs are posted at: Kwajalein, Roi-Namur and Ebeye Dock Security Checkpoint locations; outside the United Travel Office; in the Roi Terminal/Post Office; at Human Resources in Bldg. 700 and on the "Kwaj-web" site under Contractor Information>KRS> Human Resources>Job Opportunities. Listings for off-island contract positions are available at www.krsjv.com.

Community Bank currently has a position available for a Part-Time Teller; 20 hours per week, Tuesday-Saturday. Interested individuals can apply at www.dodcommunitybank.com. Click on Resource Link for Community Bank Careers.

COMMUNITY NOTICES

Christian Women's Fellowship Luncheon. Please join CWF on Sunday, Nov. 5, 12:30-2 p.m. in the REB for lunch and a special guest speaker.

Veterans Day Small Boat Marina Special. All U.S. Veterans who rent B-Boats on Veterans Day, Nov. 11, will only pay for gasoline usage during their rental periods that day. The rental fee for the boats will be voided for those who have served and currently serve our country. Thank you for your service!

November Free Open Rec: Jedi Academy. Location: George Seitz Elementary Gym. Jr. Session (Grades K-2nd): Saturday Nov. 4, 4:30-6:30 p.m. Sr.

Session (Grades 3rd-6th): Saturday Nov. 18 4:30-6:30p.m. Dress up as your favorite Star Wars character and join us for a night of all things Star Wars, you will! We will have Star Wars games, crafts and a treat! May the Force Be with You! Must be registered with CYS to participate. Call 52158 to reserve a spot.

We want you to share your musical talents at the 2018 Kaleidoscope of Music on Sunday, Jan. 21, 2018. Performers must be adults or high school-aged. Contact Jacque Phelon at 55124 to sign up or obtain additional information.

Mother-Son Event. GSE boys K-6 and moms invited for laser tag, scavenger hunt, food, prizes on Saturday, Nov. 18 at the CRC complex. There is a 6 p.m. start for grades K-3 and 7 p.m. start for grades 4-6. \$10 per person. Buy online at "GSE PTO Mother Son Scavenger Hunt Event" FB page. Closed-toe shoes required.

The 48th Annual Kwaj Open. Tee Off Social, Nov. 10, 4:30-6:30 p.m.; Vets Hall Entry Fee of \$100 includes shirt, prizes and banquet Round #1. Sunday, Nov. 12, Chip, Putt, Drive. Wednesday, Nov. 15, Mixed Horse Races. Thursday, Nov. 16, Men's Horse Races. Friday, Nov. 17, Putting Competition. Saturday, Nov. 18 Final Round. Sunday, Nov. 19, Banquet. Monday, Nov. 20, Vets Hall. Contacts for this tournament are: Jeff Jones, Coordinator, 54678 and Deb Crawford, Tee Times (debra.b.crawford@lmco.com).

EAP Group Sessions. Sign up now for one of the following groups to start the week of Nov. 12. Healthy Living (six weeks). It's never too early or too late to work towards being the healthiest you! Topics include sleep, nutrition, exercise, self-care, mindfulness and stress management. Meet Wednesdays at 4:30 p.m. in Hospital Conference Room. Smoking Cessation (eight weeks). Learn the tools and increase your support for minimized use of tobacco. Meet Tuesdays at 4:30 p.m. in Hospital Conference Room. Call EAP at 55362 for more information and/or to sign up.



VETERANS DAY 2017

USAG-KA Oceanside Flag Poles
Saturday, Nov. 11 at 11 a.m.

The community is invited to attend the USAG-KA Veterans Day Ceremony to honor veterans of the U.S. Armed Forces. and those who serve our country today.

Calling All Singers. Island Memorial Chapel is hosting a COMMUNITY CHOIR for all ages with the hopes of performing at upcoming community events, including the Christmas Eve service. Everyone is welcome and rehearsals start soon. Email heather.ardrey@gmail.com with questions or for more information.

SAFETY/ENVIRONMENTAL

Heavy Equipment activity is planned for Tuesday, Nov. 7 in the following areas: The intersection of Lagoon Road and Ninth Street, the intersection of Ninth Street and Ocean Road and the intersection of Ocean Road and Sixth Street. Flagmen will direct traffic at about 10 a.m. and 2:40 p.m. in these areas Nov. 7. Please use caution

and during transit and obey orders from the flagmen during these heavy equipment activities.

Safely Speaking: Scaffold Safety. Before using any scaffold, make sure you know how to safely use it and that it has been inspected by a qualified and competent person to make sure it is safe. Never use a scaffold that has a red or a white tag.

Safely Speaking II: Bicycle Safety. Don't use headphones while riding a bike on Kwajalein.

E-Talk: Graffiti and Historic Structures. The defacing of historic structures is prohibited by USAG-KA Regulation and, if caught, can lead to administrative disciplinary action.



THE KWAJALEIN ART GUILD PRESENTS THE ANNUAL HOLIDAY BAZAAR

Monday, Nov. 6, 10 a.m. to 2 p.m.
The MP Room and CRC Room 1

Artisans, crafters and vendors join together to offer you Kwajalein's unique holiday shopping experience!



Café Roi

*MENU CURRENT AS OF NOV. 2

LUNCH

Sunday	Monday	Tuesday	Wednesday	Thursday	Friday	Nov. 11
Sliced Roast Beef	Corned Beef	Thai Beef	Soup du Jour	Baked Fish	Greek Herb Chicken	Sausage and Peppers
Eggs Benedict	Chicken Supreme	Chicken Cacciatore	Curry Chicken	Cottage Pie	Greek Lemon Potato	Chicken Alfredo
Sauteed Fish	Breakfast Frittata	Fried Rice	Rice Pilaf	Pasta Carbonara	Legumes	Garlic Bread

DINNER

Sunday	Monday	Tuesday	Wednesday	Thursday	Friday	Nov. 11
BBQ Pork	Pork Chops	Pizza Night	Grilled Steak	Roi Fried Chicken	Mexican Night	Grilled Pastrami Sandwich
Chicken Florentine	Beef Short Rib	Chicken Sandwich	Chicken Fajitas	Egg Noodles	Beef Tacos	Roast Pork
Pasta Primavera	Bread Stuffing	Manicotti	Baked Potato	Mashed Potatoes	Tamales	Onion Rings

SIMPLY SAFE



HEARING DAMAGE

Your speakers are blowing/ Your ears are wrecking/ Your hearing damage/ You wish you felt better...

The lyrics to Thom Yorke's 2009 song "Hearing Damage" could describe a typical day on the job without proper hearing protection. When we are exposed to loud noises over long periods of time, we increase the risk of losing our ability to hear. The tiny cells in our inner ear that are most likely to be damaged are those that allow us to hear noises in the frequency range of the human voice.



How To Reduce Sound Levels

Sound is additive; wanted or unwanted, it can damage hearing. Reducing the number of loud noise sources will reduce harmful noise exposure. Sound levels can sometimes be reduced by installing sound absorption materials around a workspace or by reducing vibration produced by machinery and equipment.

As tempting as it may be, don't engage in a radio war with your next-door roommate or the shop noise in the office next door to you. Turning up the radio to drown out unwanted noise increases one's exposure to harmful noise.

Hearing Protection

If we cannot prevent exposure to sound, we can reduce exposure by using hearing protection. To determine the best type of hearing protection for any particular application, it is best to learn about the typical sound levels of a work environment and to measure them with a noise level meter. It is also helpful to determine the duration of time spent in noisy environments with and without hearing protection.

If you are not sure about your department's sound safety practices, speak to your immediate supervisor and contact the safety department to learn more.

Places To Use Hearing Protection

- On the job in construction sites
- Around Bucholz Army Air Field
- Shops where heavy machinery or industrial equipment such as air compressors or electric saws are used on a regular basis
- Loud sports environments

Proper Use of Hearing Protection

Hearing protection should not cause discomfort. If it does, ask if there are other options that you can try. When foam earplugs are used, they should be inserted correctly into the ear. This is done by squeezing the earplug so that it's compressed fully, then opening the ear canal by pulling on the top part of the ear with the opposite hand, and carefully sliding the foam earplug into the ear. It is important to hold the earplug in place for 15 seconds, so that it expands properly inside the ear canal.

Earmuffs are easy to use, but may not offer the same level of protection as most ear plugs. Always check the Noise Reduction Rating of the earmuff or ear plug to ensure you have the right level of hearing protection.

Thought Provoking Questions

What are the primary sources of noise? What actions can be taken to reduce the level of noise in your work area?

If you're required to wear ear protection, does it fit properly and it is effective?



TO BUILD A BONFIRE

Interested in having a bonfire? Contact Community Activities to reserve Coral Sands Pavilion and submit a reservation form no later than noon on the Friday before the bonfire event.

Community Activities will coordinate the delivery of pallets. No other materials should be burned in the bonfire pit. Once availability of pallets is confirmed, the customer can visit the Grace Sherwood Library to receive bonfire instructions.

On the day of the event, contact the Kwajalein Fire Department for a burn permit and fire extinguisher. The reservation confirmation and bonfire agreement are required. Please note, burn permits are not issued during Small Craft Advisories or periods of inclement weather or if the area is determined to be unsafe. All combustibles must be kept at least 35 feet from the fire.

To prevent heat and ember development pallets should not be stacked more than two high at any time inside the burn pit. Burning paper or trash in your fire is not advised as winds tend to carry lighter items away from the burn pit. Extinguish bonfires when winds exceed 20 knots. High winds carry hot embers great distances and ignite vegetation or property.

The customer is responsible for keeping the fire under control and for making sure people at the party behave appropriately around the fire. The customer must put out the fire at the end of the party and returning the extinguisher to KFD personnel after the bonfire activity. Any pallets not used for the bonfire activity shall be stacked neatly out of the way (approximately 35 feet away from the burn pit) of other Coral Sands patrons.

Bonfires at any location other than Coral Sands should be directly coordinated with the Kwajalein Fire Department. Special consideration will be given for events such as Girl Scout and Boy Scout campouts. Contact Community Activities at 53331 with questions.

UNITED CHECK-IN TIMES

Monday, United 155—**3:30-4:45 p.m.**
 Tuesday, United 154—**11-11:30 a.m.**
 Wednesday, United 155—**2:30-3:45 p.m.**
 Thursday, United 154—**11:30 a.m.-Noon.**
 Friday, United 155—**3:30-4:45 p.m.**
 Saturday, United 154—**11-11:30 a.m.**

ATI CHECK-IN TIMES

Early departures—**7:45-8:15 a.m.**
 All other departures—**8-8:30 a.m.**
 *Check with your ATI flight representative to confirm check-in and flight departure times.

