

VOLUME 65 NUMBER 81

JULY 19, 2025

# ***THE KWAJALEIN HOURGLASS***







PHOTOS BY CHRISTY WAGNON

ABOVE: Blacktip shark at Troy's Coral Head.

## COMMUNITY SHARK WEEK SPLASHES INTO ACTION | DISCOVER THE SHARKS OF KWAJALEIN

### • HOURGLASS REPORT

By Christy Wagon; CYS  
Deputy Director

Every summer, millions of viewers around the world tune in for Shark Week—a week-long television event filled with thrilling documentaries, dramatic encounters, and powerful messages about ocean conservation. Kicking off on Sunday, July 20, 2025, this year's Shark Week on the Discovery Channel promises to be a celebration of science, myth-busting, and the vital role sharks play in ocean ecosystems.

You don't have to travel far to witness the majesty of sharks in their natural habitat. Right here in Kwajalein Lagoon, divers and snorkel-

ers are fortunate to share the water with several fascinating shark species that call this part of the Pacific home.

A shiver, or group of nurse sharks, makes their home at the Small Boat Marina (SBM). Nurse sharks are bottom-dwellers known for their docile nature. Despite their size, they are gentle giants, feeding mostly on small fish. Their whisker-like barbels help them feel for prey in the sand. If you want to see these sharks in action, be sure to stop by the SBM when the fishermen return with their catch.

With their distinctive black-tipped fins and graceful swimming style, blacktip reef

sharks are some of the most frequently spotted sharks in Kwajalein's shallows and reef zones. While they may appear curious, blacktips are typically shy around humans and pose little threat.

The streamlined, fast-swimming sharks often seen patrolling the outer reef walls are the grey reef sharks. Known for their territorial behavior, especially when approached closely, grey reef





sharks play an important role as apex predators maintaining reef health.

Easily recognized by the white tips on their dorsal and tail fins, whitetip reef sharks are mostly active at night. During the day, they are commonly spotted resting motionless on sandy bottoms. Their slender bodies allow them to weave through narrow reef crevices in search of prey.

Shark Week isn't just entertainment, it's education. By showcasing sharks' behaviors, habitats, and challenges, the event inspires con-

servation and appreciation. For divers and snorkelers in Kwajalein, every underwater adventure offers the chance to experience what millions only see on screen.

I personally had an amazing shark experience recently at Bigej. We took some friends up to do some snorkeling and beach combing, and when we got into the water, we found ourselves in a bait ball of thousands of fish and a dozen sharks. We swam with them for about 10 minutes, an unforgettable, humbling reminder of the power and beauty of the ocean.



This Shark Week, why not take the plunge and explore some of Kwajalein's best shark-spotting dive sites, like Troy's Coral Head, known for frequent shark sightings. Prefer to stay closer to the surface? Snorkelers can sometimes catch a glimpse of sharks in the tide pools at low tide or just off Emon Beach. Grab your GoPro and experience the thrill of seeing these magnificent marine animals up close, right here in your own backyard.

As always, divers and snorkelers are reminded to ob-

serve sharks with care: maintain a respectful distance, avoid sudden movements, and never feed or chase them.

Whether you're a long-time diver or a Shark Week first-timer, there's never been a better moment to appreciate these powerful creatures and the important role they play in ocean health.

Shark Week 2025 is more than just TV—it's a reminder that the most unforgettable encounters are the ones we experience firsthand, right here in our own backyard. 🦈



## IT'S KITTEN SEASON

Interested in Adopting a Kwaj Cat?

Call **480-2017** or stop by the **Vet Clinic** to inquire and gather the paperwork.

### Foster Parents also wanted!

Call or Email us your information if you would like to become a Kwaj Cat foster parent!

[kwajvetclinic@acuityinternational.com](mailto:kwajvetclinic@acuityinternational.com)

# E-Wareness



## Stormwater Pollution Prevention

Stormwater discharges are a significant source of pollutants. Stormwater can become polluted as it flows over contaminated surfaces. This leads to contamination of lagoon waters and potential damage to corals and other marine species.

What can you do?

- Good housekeeping
- Preventive maintenance on vehicles and equipment
- Maintain spill prevention and quick response supplies
- Preserve sediment erosion control
- Manage storm water runoff
- Employee training

For more information on stormwater pollution prevention or training opportunities, contact V2X Environmental at 480-0722.

## Kejbarok jen paijin in an toor dren

Ijoko elap an toor dren ie rej jikin ko elap menin paijin/kij ko remaron in bar walok ie. Ekka wot an jede paijin kein jen ijoko dren eo ej toorlok ie. Elane ej toor dren kein nan lojet innem enaj kakure lojet eo, wod ko ie im menin mour/eddrek ko ie.

Ta komaron komane?

- Karreo
- Kejbarok wot jerbal ko bwe in driklok an nej walok jorren im kein jerbal
- Kojerbal spill kit ko im mokaj nan jerbal ko
- Lale men ko rej elejo bwe renjab toor nan lojet
- Manage e drenin wot ko ial ko
- Etal nan Training ko nan ekatak

Nan melele ko relaplok ikijeen wewein kein ak training, call e V2X Environmental ilo 480-0722.



## EARN YOUR TEAM KWAJ TAB!

**Front Cover: Jera on couch by Melissa Dethlefsen**

**Back Cover: Bike sunset by Melissa Dethlefsen**

The Kwajalein Hourglass is named for the insignia of the U.S. Army's 7th Infantry Division, which liberated the island from the forces of Imperial Japan on Feb. 4, 1944. The Kwajalein Hourglass is an authorized publication for military personnel, federal employees, contractor workers and their families assigned to U.S. Army Garrison-Kwajalein Atoll.

Contents of the Hourglass are not necessarily official views of, or endorsed by, the U.S. Government, Department of Defense, Department of the Army or USAG-KA. It is published Saturdays in accordance with Army Regulation 360-1.  
Phone: Defense Switching Network: 315-480-5169  
Local phone: 480-5169

Garrison Commander.....Col. Matthew Cannon  
Garrison CSM.....Command Sgt. Maj. Stanley Jackson  
Public Affairs Officer.....Sherman Hogue  
Editor.....Muhammad Rasheed  
Communications Specialist.....Stephen Elson  
Media Capture.....Melissa Dethlefsen  
Story Writer.....Christy Wagon





📷 PHOTO COLLAGE BY MELISSA DETHLEFSEN

BELOW: The winning kickball team, "The Jawns," poses proudly.

## COMMUNITY

# KICKBALL ROUND ROBIN BRINGS OUT COMMUNITY SPIRIT WITH PICKUP PLAY AND SUMMER FUN

### HOURLASS REPORT

By Christy Wagon; CYS Deputy Director

Sometimes the best way to shake off the stress of everyday life is to lace up your sneakers, gather some friends, and kick a red rubber ball across a grassy field. That was the spirit behind this year's MWR Coed Kickball Tournament—an event that blended fun, fitness, and laughter in a casual, community-driven setting.

This year's tournament featured a pickup-style format. There was no need to pre-register—players simply showed up with a team or joined as individuals, with MWR staff

helping match them with others. It was a fantastic way to meet new people and get involved. Teams were required to include at least three men and three women, keeping the competition both inclusive and balanced.

The tournament kicked off at Ragan Field and followed a round-robin format, with each team guaranteed plenty of play time. Five teams participated, including several newcomers experiencing their first kickball tournament.

Although no teams from Ebeye joined this year, a handful of new community members did, bringing fresh



📷 PHOTO BY OANA NEAGU



energy and spirit to the field. Spectators and players alike were treated to some thrilling home runs, exciting plays, and above all, a notable display of sportsmanship and community connection.

The atmosphere throughout the event was electric, filled with laughter, cheers, and friendly competition. Participants raved about the

experience, praising the tournament's fun, casual vibe and the opportunity it created to connect with others.

While there's still no official prize, "no golden coconut yet!" laughs MWR Technician Cherokee Graham, the real reward was the camaraderie built along the way.

And the champions? With the final night of games

wrapping up the tournament, the winning team, The Jawns, took home bragging rights and big smiles—solidifying their place in kickball glory until next summer rolls around.

Looking back, Graham wouldn't change a thing. "The tournament unfolded exactly as intended—a casual, pick-up-style event that brought

people together through sport. It was a great success."

Whether you're a kickball veteran or just dusting off your elementary school moves, be sure to keep an eye out for next year's tournament. You won't want to miss your chance to kick it old school. X



PHOTOS BY MELISSA DETHLEFSEN







PHOTO COLLAGE BY MELISSA DETHLEFSEN

## COMMUNITY

# ISLAND IN FOCUS: HOW CHI SCHAEFFER CAPTURES LIFE ON KWAJALEIN, ONE SERENE SCENE AT A TIME

### HOURLASS REPORT

When Chi Schaeffer first stepped onto the shores of Kwajalein Atoll in February 2022, she had no idea how deeply the island's rhythm would transform her life. What began as a simple move soon became a creative journey—one that she now shares with the world through her Instagram page, @kwajalein\_life.

Three and a half years later, Chi's page has grown into a visual love letter to island life. Her videos invite viewers into a slower, more intentional pace of living: bike rides under swaying palms, colorful sunsets stretching over the lagoon, and snorkel dives revealing schools of fish and vi-

brant coral. With more than 1,300 followers and counting, her content resonates with a wide audience—former residents, future arrivals, and those simply dreaming of tropical peace.

"I've always wanted to start a vlog," Chi says. "And living on Kwaj is so unique—most people never get the chance—so I thought it would be fun to share my Kwaj life!"

Her videos are more than just travel content. They offer honest, everyday glimpses into what it means to live on a remote island: free diving practice in the adult pool, casual coffee dates with friends, exploring the Hobby Shop,

or making a quick stop at Surfway. "I mainly use an Insta360 X4 and iPhone 15 Pro," she shares, explaining that these tools help her capture both the broad beauty and tiny moments that define life on the atoll.

One of her favorite videos, pinned to the center of her profile, features a creative transition where Chi appears in front of her home, then is suddenly standing in the ocean. "It was fun because I had to shoot in two different locations and match my foot position and camera angle precisely," she says. "The editing in Premiere Pro was super detailed, so when I finished, I

felt really accomplished."

Chi's videos are personal yet accessible, often using music and voiceovers to overcome language barrier. The beauty of Kwajalein, as she proves, does not require translation.

Originally from Japan, Chi never had time to create content before moving to Kwajalein. "I was too busy to vlog when I was in Japan," she explains. "I'm happy I finally have the chance to do it here."

More than just a setting, Kwajalein has reshaped her worldview. "Living on Kwajalein changed my life, values, and mindset in a positive way," she says. "In Japan, I was used to putting others first,



but here I've learned to prioritize myself and treat myself with kindness. Life has become much easier and more joyful for me because of this shift."

Now, the simplicity of life on Kwaj is exactly what inspires her. "You can ride your bike everywhere on the island, snorkel all year round, and the weather is perfect for me since I'm not a fan of cold weather," she laughs. Her favorite subjects to film? "Underwater scenes, beautiful sunsets, blue skies, and palm trees."

One recent reel, titled "Life on Kwaj be like...", captures her gliding through the ocean with ease, surrounded by sunlight and sea life. Another features traditional Marshallese clothing and hairstyles, celebrating the local culture. "I was especially moved by the Christmas event called JEPTA on Ebeye," she says. "The kids and adults danced so well. That video actually went viral!"

Creating these peaceful windows into island life takes

time. "Filming usually takes 1-2 hours, editing about 30 minutes to an hour," Chi says. "Uploading can take up to 10 minutes because the internet is so slow here! Lol."

Her goal is simple but meaningful: "I hope my videos inspire people to consider working or living on Kwaj. I really want others to enjoy island life here too."

Chi's online presence has become something special to many. Former residents say her videos help ease the sting of leaving. Newcomers say they feel more prepared and excited thanks to her content. And for everyone else, her posts are a welcome pause, a reminder of the beauty found in stillness. "Even though life here is a little inconvenient at times, like not having easy access to things, it helps you appreciate small joys. That is a wonderful gift."

When asked what she'll miss most, her list is long and heartfelt: "The beautiful ocean I can swim in all year, the warm climate, the palm trees, friends I met on Kwaj,

Surfway, biking around the island, stunning sunsets, and the fact that we don't get many bills. Lol."

Chi will be moving back to Okinawa, Japan, later this year—but her account isn't going anywhere. "Yes, I'll keep posting! I plan to reflect on my time on Kwaj, share comparison videos between Okinawa and Kwaj, and of

course, keep filming snorkeling videos showing both seas."

Through the lens of her social media page, Chi Schaefer has created something rare: an honest, immersive, and peaceful record of a life lived with intention on one of the world's most remote and breathtaking islands—and she's just getting started. ▼



## Kwajalein Island Trash & Recycling

Residential Trash Collection	480-1760
Yard Vegetation Collection	480-1890
Hazardous Waste Pickup Line	480-8858



### TRASH & RECYCLING PICKUP SCHEDULE

The Green Residential TRASH receptacles are collected every **Tuesday and Friday**.

The blue RECYCLE bins are also collected every **Tuesday and Friday**.

The large black General Solid Waste Community Containers are emptied on Monday, Wednesday, Thursday, and Saturday.

**Safety First!** Please keep any curious children away from the Compactor Truck as it feeds contents into the truck.

Recyclable materials are also collected by both *solid waste* and *horizontal maintenance personnel*, in conjunction with general trash collection. Currently the island only recycles glass, aluminum, metal, and bulk organic materials. **Cardboard and plastics are not recycled materials on Kwajalein.** These items should be placed into the general trash stream for disposal/incineration.



Residential users will be given a **green trash** receptacle and a smaller **blue receptacle** for recyclable materials. It is requested that residences place their recyclable items into the blue containers, and stack larger materials next to the bins. Lawn clippings and leaves should be bagged and placed next to bins. Palm fronds and coconuts should also be stacked up next to the bins for removal by horizontal maintenance personnel.





📷 PHOTO BY ROIDA CALLADINE

ABOVE: Nap time with Schnitzel and Schatzi. BELOW: Coraline Way shows off Baby Steve Catson. NEXT PAGE: Toulouse and Steve

## COMMUNITY

# WHERE ARE THEY NOW? STEVE, SCHATZI & STRUDEL: FROM WALL TO WONDERLAND

### HOURLASS REPORT

By Christy Wagon; CYS Deputy Director

Earlier this year, the sound of meowing behind a wall in the Baru infant/toddler classroom at CYS sparked one of the most memorable rescues on island. With help from V2X Fire Prevention, Pest Control, Department of Public Works, and the Acuity Vet Clinic, a panel was cut open to reveal a tiny kitten with dark blue eyes. That kitten was affectionately named Wall-E. But Wall-E wasn't alone.

Further investigation confirmed a litter was present, and thanks to swift action and island-wide compassion,

multiple kittens were safely rescued and placed with loving families. Now, a few months later, these kittens—once hidden in the walls—are thriving in their forever homes. Here's where they are now.

For CYS Administrative Supervisor Roida Calladine, the decision to adopt two of the rescued kittens—Schatzi and Strudel—was spontaneous but life-changing.

"We weren't even looking for new pets, especially not cats," Roida recalled. "We've always been dog people. But when we saw these tiny kittens huddled together, abandoned and vulnerable, our

hearts simply melted. We just knew we had to help them."

Despite their rough start, Schatzi and Strudel quickly blossomed. "They transformed within days from timid, scared kittens into confident, playful little creatures. Their personalities came out so fast—Schatzi is the adventurous instigator, and Strudel is the mellow, affectionate snuggler."

Bringing them home has reshaped daily life in the Calladine household. "Our days now revolve around kitten mealtimes, play sessions, and naps. We even got a baby cam to monitor them while we're at work. Our quiet evenings





are now filled with the pitter-patter of paws and the comforting purr of a kitten curled in our lap.”

The kittens’ wild energy has brought laughter, chaos, and warmth to their home. “They’re a blur of motion one minute and curled up asleep the next. That switch from full-speed play to instant cuddles is exactly why we adore them.”

It hasn’t been without challenges. “They were initially very skittish,” Roida explained. “We had to spend time sitting quietly, offering treats, building trust. And while most kittens pick up litter box habits quickly, accidents can still happen—espe-

cially with ones who’ve lived outdoors. But with patience and love, they’ve adapted beautifully.”

Another wall-rescue success story comes from Tatianna Way, who adopted a tiny kitten, originally Wall-E that she named Steve. Like Schatzi and Strudel, Steve was discovered behind the walls of CYS—frightened, fragile, and in need of care.

“Steve stayed hidden at first. We were literally feeding him under the couch because he wouldn’t come out,” Tatianna shared. “But we gave him time, and slowly, he started to trust us.”

Steve now rules the home with confidence. “For being

only two pounds, he’s powerful. When he enters a room, he commands attention. It’s amazing to see how far he’s come.”

Life with Steve has been full of surprises. “He’s got this wild energy—we’re still managing his love for midnight parkour. We leave toys and distractions in the living room at night just to keep him engaged somewhere safe.”

And like the Calladines, Tatianna’s home has shifted to accommodate their newest family member. “It’s chaotic and beautiful. We’ve rearranged furniture, added expenses for food and litter, and changed how we travel—but in return, our house feels full

of life and love.”

From the quiet cries behind a wall to joyful chaos in their new homes, these kittens have shown how rescue and love can transform lives—both theirs and their adopters’.

If you’re considering fostering or adopting a pet, the Kwajalein Vet Clinic continues to seek loving homes for local cats and kittens. To learn more, contact the clinic at 480-2017 or email [kwajvet-clinic@acuityinternational.com](mailto:kwajvet-clinic@acuityinternational.com).

Sometimes, the greatest joys really do come from the most unexpected places—even from inside a wall. ▾



PHOTO BY TATIANNA WAY



# EARN YOUR TEAM KWAJ TAB

1. Attend Col. Cannon's TEAM KWAJ brief (either Teammate or Community version), read and adhere to the TEAM KWAJ Teammate Pact, presented at initial town halls, and periodically thereafter.

2. Attend the Island Newcomer's Briefing.

3. Attend at least one group greeting at air terminal for personnel arriving on island. Make them feel welcome and show them we are happy they are on Kwaj with us.

4. Attend at least two garrison after-hours team-building or social events (TEAM KWAJ Happy Hour, Commander's Call, Hail/Farewell).

5. Attend at least two TEAM KWAJ PT/Wellness sessions. Become a regular attendee!

6. Visit Marshallese Cultural Center in last 3 months prior to tab award.

7. Visit Ebeye, Third island or Majuro in last 3 months prior to tab, use a Marshallese phrase or two and visit a store/restaurant.

8. Tell three co-workers how to earn the TEAM KWAJ tab.

9. Swim, snorkel, boat or paddle on the lagoon at least once with a teammate.

10. Complete the TEAM KWAJ Circle-island 6-mile ruck march/walk/bike and read all historic battlefield markers. This is an organized USAG-KA hosted event several times per year.

11. Mission Partner wild card event—discuss with your supervisor any additional organizational requirement. Could be knowledge-based, achievement-based, or physical challenge.

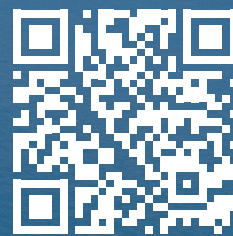
12. Final event, "Board of Review" — meet with Col. Cannon face-to-face individually or in a small group with all requirements fulfilled. Schedule with garrison front office. Discussion items may include but are not limited to; TEAM KWAJ pact - "Healthy Community of Excellence," Kwaj history, Marshallese culture, military/strategic missions and their significance, and future operational potential.

Once you have the first 11 items completed, contact Terri Wilson at 480-4322 or at [terri.l.wilson20.civ@army.mil](mailto:terri.l.wilson20.civ@army.mil) to set up a date/time with the commander for the final event.



Check out more news and entertainment about Kwaj life on the USAG-KA YouTube Channel, at <https://www.youtube.com/USArmyGarrisonKwajaleinAtoll>.

## FOLLOW US AT THESE LOCATIONS



Click QR Code to jump to social page

Kwajalein



MIA Project

# NEVER FORGET.

<https://kwajaleinmiaproject.us/>



# COMMUNITY CLASSIFIEDS

## Submit Announcements to the Roller Channel and The Kwajalein Hourglass

**OPEN CALL FOR ANNOUNCEMENTS**  
*The island community is invited to submit listings for events and for sale items; announcements; department trainings; safety updates; public service messages; and thank-you messages.*

### Preparing Your Message

*For questions about your messaging, please reach out to the USAG-KA Public Affairs Office at 480-4848.*

*Ads should always include a point of contact, phone number and/or email address.*

*Private parties, fundraisers and events requesting and/or accepting donations are typically not allowed for publication per AR 360-1. Fundraisers and support activities for private and schools-based organizations, scouting groups, civic clubs and other listings may be subject to a legal counsel review to determine their eligibility for publication.*

### Formatting Your Listings

*It is recommended that graphical advertisements*

*and announcements intended for the Hourglass and the AFN Roller Channel be formatted as PowerPoint slides.*

*Graphic designers are asked to maintain a generous margin (.75-1-inch) around all sides and to size fonts no smaller than pt. 20.*

*If your Roller Channel advertisement requires a special expiration date, please note this for the Roller team in the body of your message.*

### Deadlines for Submissions

*Send advertisements for the Kwajalein Hourglass and the AFN Roller Channel to [kwajaleinhourglass@gov2x.com](mailto:kwajaleinhourglass@gov2x.com) on Wednesdays by close of business/Thursday morning.*

*Roller Channel ads are accepted on a rolling basis by 4 p.m. for a mid-week and late-week update. Ads received after 4 p.m. will be loaded in the next update. Please ensure you submit ads in good time to ensure timely upload.*

For more information, reach out to the USAG-KA Command team through the USAG-KA Facebook page.

### ANNOUNCEMENTS

**AFH Construction Is Ongoing.** Nan, Inc. Construction is scheduled to commence the telecommunication scope of work for the Kwajalein Army Family Housing project in our community. Residents and commuters should be aware of possible changes in traffic patterns and to plan their routes accordingly. Nan, Inc. Construction is committed to minimizing any inconveniences, and we will strive to ensure a smooth and efficient construction process.

**ArMA.** Log in to ArMa, the Army Maintenance Application, to report issues for all buildings maintained by the Department of Public Works. Contact Public Works at 480-3550.

**CAC Office.** Before your visit to the Common Access Card Office, ensure all paperwork is completed by your human resources representative before making an appointment. Bring two forms of government-issued IDs with you. Walk-in appointments are welcome, but there may be a wait. CAC Office Hours, Bldg. 835, are Tuesday – Saturday, 8 a.m. – 4 p.m.; (Lunch: noon - 1 p.m.). Call 480-8496.

**Demolition at the Capt. Louis S. Zamperini Dining Facility.** Phase three of the Zamperini DFAC demo has begun and is projected to be finished March 2026 for the dining and serving area. Be careful around the dining facility during the phases.

**Do Not Take Cultural Artifacts.** It is illegal to remove cultural resources from the atoll. This includes any protected species, unexploded ordnance, WWII-era artifacts and ancient Marshallese artifacts. These resources are protected under U.S. federal and RMI law. Contact the Kwajalein Archaeology Office at 480-8867.



Contact the USAG-KA Sexual Harassment/ Assault Response and Prevention Victim Advocate

Chief Warrant Officer 2 Nate Elkins  
SHARP Victim Advocate  
Work: 480-0660 or 480-3421  
USAG-KA SHARP Pager:  
808-580-3241  
DOD SAFE Helpline: 877-995-5247

**Emergency Management.** Visit the USAG-KA Emergency Management webpage, <https://home.army.mil/kwajalein/index.php/my-fort/EM>; 2) Click on "Mass Notification"; 3) Follow the registration instructions.

**E-Wareness:** It is each driver's responsibility to ensure vehicles are not leaking fluids other than air conditioning condensate. Call 911 to report spills and arrange with automotive for routine maintenance. Please call Environmental at 480-0722 with questions. Ej an ri-kator eo eddo non lolorjake bwe wa eo ejjab leak jabdwot oil ijelak in drennin air condition eo jen wa eo. Ne elon jabdwot leak/lutok in oil jen wa eo, Kiir 911 non report- e lutok eo. Ak kiir Environmental ilo 480-0722 non kajitok.

**Fire Safety Tips.** Some pets are chewers. Watch pets to make sure they don't chew through electrical cords. Pets are curious. They may bump into, turn on, or knock over cooking equipment. Keep pets away from stoves and countertops. Make sure pets are included in your family's fire evacuation plan. Build an evacuation kit for each pet in your household.

**Flights.** Please note that all flights are subject to change. For the latest update on your flights on United, ATI or Air Marshall Islands: ATI: 480-2169; AMI: 480-3469; United: 480-4852 or 1-800-UNITED1; Air Terminal Services: 480-2660; Flight Information Recording: 480-3589

**UA Schedule Effective Now:** Monday and Friday—UA 155 (HNL); Check-in 2 – 4:50 p.m.;



Wednesday—UA 133 (HNL); Check-in 2 – 4:15 p.m.; Tuesday and Saturday—UA 154 (GUM); Check-in 10:45 – 11:15 a.m.

FlyRoi Reservations. To schedule reservations and for correspondence related to flights, email [LCVKwajaleinFlyRoi@versar.com](mailto:LCVKwajaleinFlyRoi@versar.com).

How to dress in the RMI. Out of respect for the Marshallese culture, residents are asked to dress appropriately when visiting Ebeye, Third Island, or anywhere within Kwajalein Atoll. Women should wear clothing to cover shoulders and knees. None are permitted to wear shorts when visiting churches on Ebeye. Men should wear long slacks to church.

Kwaj Small Boat Marina hours are 7:30 a.m. – 6 p.m. Friday through Monday, and on holidays, excluding Thanksgiving and Christmas. Morning boat reservation times are from 7:30 a.m. – noon. Afternoon boat reservations are from 1 – 5 p.m.

Not Feeling Well? Call 480-2223 to make an appointment for a COVID-19 test, Tuesday through Saturday from 7:30 a.m. – 4:30 p.m. If you are not feeling well, please wear a mask when you are around others in the community.

Operational Security. See something, say something. All employees on USAG-KA are required to receive annual Threat Awareness and Reporting Program training provided by KRO; Reporting: Report suspicious activities to the Kwajalein Resident Office at 480-9859/1293/8006 at Bldg. 1163.

PCS & Vacation Tips. Notify the post office before leaving for 30 days or PCS'ing. Per DOD 4525.6-M, mail is only allowed to be held for 30 days with or without prior notice. Mail is considered unclaimed on day 31 and will be returned to the sender. Email the post office to authorize pick up for your mail and packages. When PCS'ing, provide a forwarding address. Contact James Smith with questions at 480-3461 and [james.e.smith2295@army.mil](mailto:james.e.smith2295@army.mil).

Salon Walk-Ins. Surfside Salon Walk-In Appointments are available on Fridays from 1:30 - 6 p.m.

Smoking. USAG-KA, smoking is permitted in designated smoking areas only. Smoking and cigarette butt receptacles must be at least 50 feet from the entrance of facilities.

Taxi Service. Call 480-TAXI (8294) or 3341 to

book your ride at least 24 hours in advance of check-in time.

Millican Family Pool Hours. Closed for cleaning on Thursdays. Open noon to 5 p.m. Tuesdays, Wednesdays, Fridays and Saturdays. Open 11 a.m. to 5 p.m. Sundays and Mondays.

The NEC Testing Center Is Open to the Community - Giving you the head start you need to thrive! - Open Tuesday through Saturday by appointment

Authorized Pearson VUE Test Center. Schedule A test Today!

NEC testing Center, 480-4344, FN 1008-131  
ACUITY International

## HELP WANTED

For employment with contractors  
within the  
U.S. Army Garrison - Kwajalein Atoll  
please check  
contractor company  
websites  
for employment opportunities.

Kwajalein / Roi Namur Licensing  
Classes on Kwajalein are every Wednesday  
@0900 Marshallese  
@1245 Expats (by appointment only as class  
side is limited)  
Classes are in Bldg. 856 Rm 101, Vehicle Maintenance Compound  
Roi classes every 2nd Friday in Bldg. C, timed  
based on flight schedule  
No registration needed for Roi classes.  
To register, send email to either of the following:  
[Audrey.Hughes@gov2x.com](mailto:Audrey.Hughes@gov2x.com)  
[Wilson.Kaisha@gov2x.com](mailto:Wilson.Kaisha@gov2x.com)  
...or stop by Bldg. 856, Rm 101



**OPSEC  
IS NOT  
RETROACTIVE.**

**THINK BEFORE  
YOU SHARE  
INFORMATION.  
ONLINE AND OFFLINE.**



Like and share @USArmyOPSEC



**Republic of the Marshall Islands (RMI)**  
**Driver's License Renewal and New Issue**



Republic of the Marshall Island's Department of Motor Vehicle will visit USAG-KA to process RMI driver's license renewals and new issues on these date and times:

**Roi-Namur**

Venue: Roi Library

Date: Thursday, 24 July 2025

Times: 9am to 4pm

**Kwajalein**

Venue: RMI Liaison Office, Down-Town

Date: Monday, 21 July 2025

Times: 9am to 4pm

If you would like to renew or get a new RMI driver's license, please bring a Current picture-identification card (e.g. State-side driver's license, K or C- Badge, passport). Cost for a renewal or new issue is \$20. Please pay in cash only.

Questions, please call the RMI Representative to USAG-KA's office at **480-3620/3600** or the USAG-KA Host Nation Office at **480-2103/5325**.





# KWAJALEIN HOSPITAL

Helping the community navigate healthcare needs after-hours with RN4U NURSE LINE:

**RN4U NURSE LINE:**  
**480-RN4U(7648)**



## What is RN4U?

RN4U is an after-hours nurse line designed to promote patient safety and appropriate use of emergency services. The on-call nurse is available to assist in determining the level of care needed.

## When is RN4U After-Hours Nurse Line available?

Tuesdays - Saturday from 1630-0730,  
Sundays & Mondays: 24 hours  
(excluding Garrison Holidays)



**For medical emergencies please dial 9-1-1 immediately**

For non-urgent clinic questions during normal business hours,  
please call the hospital at 480-2223



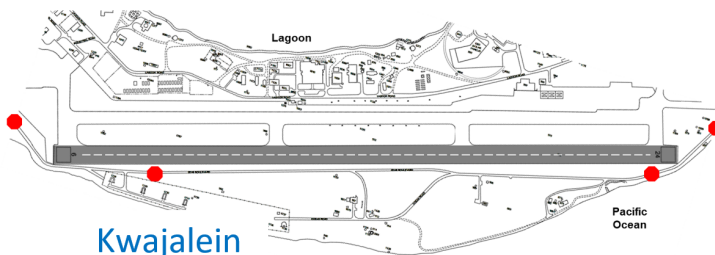
**KWAJALEIN & ROI NAMUR,**

**STOP FOR AIRCRAFT!!**

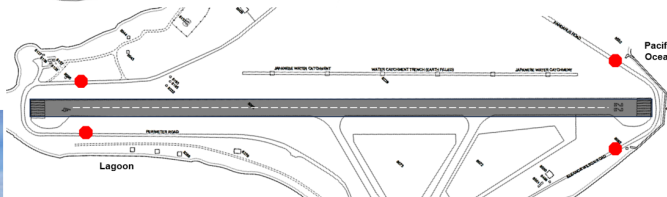


Please remember to stop and look both ways for aircraft on:  
Zeus Blvd., Ocean Rd., Perimeter Rd., Pandanus Rd., Eleanor  
Wilson Rd.

**If aircraft are on approach or taking off, you must hold your  
position and wait!**



**Roi Namur**



**Stop at designated signs and look for aircraft landing or taking off. If you see an aircraft, hold your position at the stop sign and wait until the aircraft has landed or departed before moving.**





# Kwajalein Art Guild: Call for Photographers!

## Submit for the 2025 Photography Show & 2026 Calendar



Deadline: August 16, 2025



Submit to: [artguildkwajalein@gmail.com](mailto:artguildkwajalein@gmail.com)

### Submission Guidelines:

- Landscape orientation only
- Will be cropped to 13x19 if not already
- Minimum file size: 500 KB
- No filters or editing applied after submission
- Photographers receive a printed copy of their submission



Show us the island through your lens!



### Drinking Water Standard

The US Army Kwajalein Atoll (USAKA) Environmental Standards (UES) requires public notification when the Kwajalein and Roi-Namur Water Treatment Plants (WTPs) turbidity monitoring and testing procedures are not met. Turbidity from each filtration unit at the WTPs are monitored by inline continuous monitoring equipment capable of recording data at least every 15 minutes. The Kwajalein and Roi-Namur inline continuous monitoring systems have been inoperative for several months. Water operators are collecting manual grab samples for turbidity analysis every 4 hours. Repair or replacement projects for the continuous monitors are being evaluated. Turbidity is the cloudiness or haziness of a liquid caused by particles that are generally invisible to the naked eye and by itself does not cause microbiological contamination. Drinking water from several distribution sites are analyzed weekly by the Kwajalein Hospital Laboratory for microbiological contaminants. There is no threat to public health or the environment resulting from the inoperative inline monitoring equipment. No health-based restrictions are necessary for the normal use of drinking water. If you have questions, please contact the V2X Environmental Department at 480-0722.

### Jorraan Eo Ilo Drinking Water Standard

Mottan kakien ko an US Army Kwajalein Atoll (USAKA) Environmental Standards (UES) ej aurok bwe ren karon jukjuk in bed eo ioon Kwajalein im Roi-Namur kon wawein liklik dren ko im etali elane lum in dren eo ejjab jejjot nan wawein etale ko im katak kaki. Lum in dren ko ilo kajojo kein liklik ko an WTPs rej jonok wot im walok aer alikar ilo kein jerbal ko im naaj koman einwot in mae ien data ko renaj alikar aolep 15 minit. Kein jerbal kein an dren ioon Kwajalein im Roi-Namur rekar jab jerbal iumwin jejo allon ko. Rijekbal in dren ro rekar wonmanlok wot im ebok dren nan kamelmel im lale elane elap ejake eo an lum ilo dren ko. Kilen kakomanman lak im tiljek lok jirik kon dren ko ekar bok jikin nan lale im kajeon kajako lum ko ilo dren iumwn kajojo 4 awa. Ejjelok joraan elap im kauwotata enaj jelet ejmour eo ilo juon kabujuknen eo elane ej koman katak kein jen kein jerbal ko an lale dren eo. **Ejjab jelet ejmour non karon im rejan ikkijeen kojerbal dren in non aikuij ko jet.** Elane ewor am Kajitok kir V2X Environmental ilo 480-0722.



C  
I  
N  
E  
M  
A

# Now Showing at the Yuk Theater

<b>SATURDAY, JULY 6</b> "Argylle" (2024) (PG-13) 139 min.	<b>SATURDAY, JULY 20</b> "Piece by Piece" (2024) (PG) 93 min.
<b>SUNDAY, JULY 7</b> "We Live in Time" (2024) (R) 108 min.	<b>SUNDAY, JULY 21</b> "Smile 2" (2024) (R) 127 min.
<b>SATURDAY, JULY 13</b> "Alice in Wonderland" (2010) (PG) 108 min.	<b>SATURDAY, JULY 27</b> "Wreck it Ralph" (2012) (PG) 101 min.
<b>SUNDAY, JULY 14</b> "Saturday Night" (2024) (R) 109 min.	<b>SUNDAY, JULY 28</b> "Here" (2024) (PG-13) 104 min.

All showtimes start at 7:30 p.m.

# KWAJ EYECARE

## IS COMING TO THE ISLAND

From July 29th – August 16th, 2025

Scan QR code to schedule your appointment!



## UV Safety Awareness Month — Protect Your Vision This July!

July is UV Safety Awareness Month, and with Kwajalein's strong sunbeams at their peak, safeguarding your eyes against UV exposure is more important than ever. Our trusted eye doctor, Dr. Will Black, answers KEY questions to help you keep your vision healthy year round.

### 1. How does UV exposure affect long-term eye health, and what conditions can it cause or worsen?

Long-term UV exposure accelerates aging and damage to critical eye structures. Over time, it can lead to:

- **Cataracts** (clouding of the lens)
- **Macular degeneration** (progressive loss of central vision)
- **Pterygium** (a growth on the cornea, "surfer's eye")
- **Photokeratitis** (corneal "sunburn," causing pain, redness, and swelling)
- Potentially **Cancers** of the eyelid and surrounding skin.

Even brief, intense UV exposure—like glare off reflected water—can cause acute damage, which contributes to cumulative harms.

### 2. What are the most effective ways to protect our eyes from UV damage, especially in sunny or tropical environments?

To minimize UV exposure:

- **Wear sunglasses rated "100% UV" or UV 400**, blocking UVA & UVB up to 400 nm.
- **Choose wraparound or large-frame styles** to protect against side UV rays and protect surrounding skin.
- **Add a wide-brimmed hat**—this can cut UV around your eyes by ~50%
- **Avoid peak sun hours** (10 a.m.–4 p.m.) and monitor UV index levels above 4!
- **Evaluate your sunglasses** if they are older, scratched, or if you are unsure of their UV protection and proper fit.

Bonus: Consider **polarized lenses** for glare-heavy activities! Remember, they also must also be 100% UV protective in addition to the polarization.

### 3. Are all sunglasses equally protective, or should we look for specific features or certifications when choosing UV-blocking eyewear?

Not all sunglasses offer the same level of protection. When choosing:

- Look for labels stating "100% UV protection" or "UV 400."
- Lens tint darkness does not equal UV safety—always check the UV rating.
- Inspect optical quality: no distortions—check tile lines through your lenses.
- Polycarbonate lenses offer impact resistance ideal for active wear.

### Eyes Matter. Eyecare Matters – Make UV Protection a Daily Habit

#### Special Offers at Kwaj Eyecare (July 29 – August 19, 2025)

- Get a comprehensive eye health exam.
- Has your current eyewear evaluated for UV protection?
- Discuss personalized recommendations for UV eye protection.
  - o Prescription and non-prescription options available.

**Schedule an Exam online:** [www.kwajeyes.com](http://www.kwajeyes.com) **or call** the Kwajalein Hospital at 480 2223.

Protecting your eyes today means healthier vision for tomorrow. Enjoy Kwaj safely!

Cheers!

Dr. Will Black – Kwaj Eyecare



## Water Source

The U.S. Army Garrison - Kwajalein Atoll (US-AG-KA) operates drinking water systems on Kwajalein, Roi-Namur, and Meck Islands. Collected & treated rainfall accounts for the majority of the water supplied in all three systems. Additionally, Kwajalein and Roi-Namur have extensive groundwater well systems to supplement the water supply during periods of low rainfall or drought. When necessary, Kwajalein can barge treated water to the other islands, supplementing their drinking water supplies.

Rainwater is the preferred source of water due to its purity and ease of collection. Kwajalein Atoll averages more than 100 inches of rain a year. The runway and aircraft taxiways on Kwajalein, Roi-Namur and Meck are sloped to drain toward collection sumps that pump raw rainwater to storage tanks for treatment. Rain that falls on the island, but is not collected or diverted to storm drains, percolates through the coral sands of the islands and forms a thin layer (or lens) of fresh water floating atop the saltwater which flows through the islands. The lens is less than 10 feet below the surface. This water is tapped by unique horizontal wells called lens wells installed in the centers of both Kwajalein and Roi-Namur Islands where the lens is thickest. The lens well water is pumped and filtered by a Reverse Osmosis (RO) system. Following a 2008 storm event and the resulting saltwater infiltration to the fresh-water lens, USAG-KA installed the RO filter on Roi-Namur. This unit makes it possible to treat water with high salinity. Four additional lens wells were installed on Roi-Namur in 2012 and 2013. Baseline monitoring for these wells began in 2014 and finished in 2017.

Granular Activated Carbon (GAC) filtration units are used on Roi-Namur and Meck to filter treated water before it enters the distribution system. A similar unit was installed on Kwajalein in February 2021. All three of the USAG-KA drinking water systems use direct filtration processes to remove harmful particles, dirt, and algae from the water. Kwajalein, Roi-Namur, and Meck installed advanced filtration plants in 1990, 1996, and 2001, respectively. These automated filtration plants employ enhanced mixing, flocculation, and turbidity removal in absorption clarifiers followed by mixed media filters. The turbidity, or cloudiness, of the water entering the plants is monitored continuously and treatment chemicals are adjusted automatically to provide maximum filtering. Following filtration, the water is disinfected with chlorine and placed in covered tanks called 'clearwells' where it is pumped to the distribution system based on consumer demand. Fluoride is added to the treated water on Kwajalein to promote dental health.

The rainwater catchments and the shallow freshwater lens are very sensitive to contamination from spills. Because of this, tight restrictions are placed on airfield activities and a spill prevention program is in place to avoid contamination. Potential sources of contamination are fuel spills from aircraft and vehicles, leaks from sewage lines or septic tanks, and improper management of hazardous materials, wastes, and petroleum products.

**ENGLISH**  
**U.S. Army Garrison Kwajalein Atoll**

# 2024 Water Quality Report



**Published by  
V2X  
for U.S. Army Garrison  
Kwajalein Atoll  
June 2025**



**The 2024 Water Quality Report is published in accordance with the USAKA Environmental Standards, which establishes drinking water criteria and requires suppliers to provide drinking water quality information to their customers. It is important that our customers know all the facts about USAG-KA's drinking water. This report, issued each year, includes test results, source water descriptions, an overview of the treatment process and other valuable information relating to the quality of our installation's drinking water supply. If you have any questions regarding this report or your drinking water, contact the Liquid Systems Manager, Stan Jazwinski at 480-4400, or Environmental at 480-0722.**

**EWOR UKOK IN REPORT IN ILO KAJIN MAJOL (Notice to all Marshallese):**

Naan in jiron kein rej kwalok melele ko raurok kin dren in idrak eo ilo USAG-KA in. Ewor ukok in report in ilo kajin majol. Kir lok Environmental Department eo ilo 480-0722 kin melele ko relap lok.

**We are pleased to report the drinking water provided by USAG-KA consistently meets or exceeds the established water quality standards (with exceptions noted on the following page) and is, therefore, safe for consumption.**

The Utilities Department collects over 10,000 samples annually to ensure water quality. Drinking water regulations require all public water supply systems to test for a variety of contaminants in drinking water. For many of the contaminants, the U.S. Environmental Protection Agency (EPA) has set enforceable standards for the maximum amount of contaminants allowed in drinking water. These standards are based on possible health effects of consuming the water. The standards are known as maximum contaminant levels (MCLs) and are published as national primary drinking water regulations.

MCLs are set at levels where no significant health effects would occur if water was consumed for an entire lifetime. In other words, a person would have to drink 2 liters of water every day at the MCL for a lifetime to have a one-in-a-million increase in the chance of having the described health effect. MCLs are set by the EPA, and then adopted by USAG-KA through the USAKA Environmental Standards (UES). The UES adopts MCL standards at least as stringent as EPA, and in some cases it has adopted more stringent standards. The UES requires USAG-KA to sample as if the size of the served community was 10,000 people. This increased sampling helps to further ensure safe drinking water.

The EPA and the UES also set Action Levels (AL). An AL is the concentration of a contaminant which, if exceeded, triggers treatment or other requirements for water systems. Examples of contaminants subject to an AL include Lead and Copper.

Water served by USAG-KA is tested by the Utilities Department, the Kwajalein Hospital, and by the Defense Centers for Public Health in Aberdeen, Maryland. Also, routine examinations of treatment plant performance are conducted, the distribution systems are routinely tested, and groundwater is tested for saltwater intrusion (which helps manage the thin groundwater lens by protecting it from being mixed with the saltwater on which it floats).

The Utilities Department works hard to provide top quality water to every tap. Please help us protect

our water sources by using good water conservation practices and by using effective spill prevention.



**Reverse Osmosis**



**Granulated  
Activated Carbon  
Filters**



## Important Health Information

Drinking water, including bottled water, may reasonably be expected to contain at least small amounts of some contaminants. It's important to remember that the presence of these contaminants does not necessarily pose a health risk. More information about contaminants and potential health effects can be obtained by calling the Environmental Protection Agency Safe Drinking Water Hotline at 800-426-4791.

The sources of drinking water (both tap water and bottled water) include rivers, lakes, streams, ponds, reservoirs, springs, and wells. As water travels over the surface of the land or through the ground, it dissolves naturally occurring minerals and, in some cases, radioactive material, and can pick up substances resulting from the presence of animals or from human activity. Some people may be more vulnerable to contaminants in drinking water than the general population. Immuno-compromised persons such as those with cancer undergoing chemotherapy, recovering from organ transplants, or living with HIV/AIDS and other immune system disorders can suffer negative effects. Some elderly and infants can also be particularly at risk from infections. These people should seek advice about drinking water from their health care providers. EPA/CDC guidelines on appropriate means to lessen the risk of infection by cryptosporidium and other microbiological contaminants are available from the Safe Drinking Water Hotline.

If present, elevated levels of lead can cause serious health problems, especially for pregnant women and young children. Lead in drinking water is primarily from materials and components associated with service lines and home plumbing. USAG-KA is responsible for providing high quality drinking water, but cannot control the variety of materials used in plumbing components. When water has been sitting for several hours, you can minimize the potential for lead exposure by flushing your tap for 30 seconds to 2 minutes before using water for drinking or cooking. If you are concerned about lead in your water, you may wish to have your water tested. Information on lead in drinking water, testing methods, and steps you can take to minimize exposure is available from the Safe Drinking Water Hotline or at [www.epa.gov/safewater/lead](http://www.epa.gov/safewater/lead). For more information, contact the V2X Environmental Department at 480- 0722.

## Per/Poly-Fluoroalkyl Substance Monitoring

Per/Poly-Fluoroalkyl Substances (PFAS) are a large group of man-made chemicals used in a broad array of consumer products and industrial processes. Manufactured since the 1940s, PFAS are resistant to heat, oils, stains, grease, and water. Therefore, these properties make them especially advantageous for use across a wide range of applications in many global industries, and are also why certain levels of these chemicals are persistent throughout the environment. PFAS residuals are present in nearly all industrial sites throughout the world, including Kwajalein Atoll. Most Americans have detectable levels in their bloodstreams.

In April 2024, the EPA promulgated drinking water standards for two PFAS chemicals; perfluorooctanoic acid (PFOA) and perfluorooctane sulfonate acid (PFOS). A MCL of 4 ppt and a MCLG of 0 ppt for each chemical became effective in June 2024. The finished water from the Kwajalein, Roi-Namur, and Meck water systems were sampled in CY 2024 and the results were below the MCLs. The

results had only one detection of PFOA at 0.74J ppt and one detection of PFOS 0.63J ppt at the Kwajalein Water Systems. The "J" qualifier means it is an estimated value below the laboratory method's limit of quantification.

## Monitoring Total Colliform and E. Coli

Level 1 assessments were triggered at the Kwajalein Public Water Systems on 30 January, 23 April, and 1 June 2024 due to positive total coliform (TC+) and/or Escherichia coli (E. coli) results. A Level 1 assessment is triggered when more than one positive TC+ and/or E. coli result occurs within the same month. A Level 2 assessment is triggered when more than one Level 1 assessment is triggered within a 12-month period. Since there were three Level 1 Assessments triggered within a 12-month period, Level 2 Assessment were required. It is important to note each incident required repeat samples collected immediately after the positive results and the repeat samples were negative for TC+ and E.coli. Therefore, there were no exceedances of the drinking water standard.

In February 2024, the Army Public Health Command-Pacific conducted a Level 2 Assessment of the Kwajalein Public Water System to identify possible causes and corrective measures to address the false positive results. The assessment recommended more appropriate sample site locations and the hiring of certified operators as corrective measures to prevent false positive results. Additionally, the US Environmental Protection Agency indicated they would be visiting USAG-KA in the future to evaluate the public water systems. After the June 2024 incident, there were no positive results through the remainder of 2024.

## Water Quality Monitoring

USAG-KA routinely monitors for constituents in your drinking water according to the UES and DEP for Drinking Water Treatment. Depending on the specific contaminant, the UES may require weekly, monthly, quarterly, annual, biennial (2 year), triennial (3 year), quadrennial (4 year), and novennial (9 year) sampling intervals. The table on the right shows the most recent information on contaminants detected for the period of Jan 1, 2024 to Dec 31, 2024. If the contaminant is not listed in the table, results were below the minimum detection limit (MDL).

The following parameters were monitored during 2024:

- Aesthetic Constituents and Sodium
- Disinfection Byproducts [Total Trihalomethanes (TTHM) and Five Haloacetic Acids (HAA5)]
- Volatile Organic Chemicals (VOCs)
- Total Organic Carbon (TOC)
- Nitrate/Nitrite Combined
- Pesticides and Synthetic Organic Chemicals (SOCs)
- Inorganic Chemicals (IOCs)
- Lead and Copper



## Test Results

To better understand the terms and abbreviations in the table below, the following definitions are provided:

**Action Level (AL)** - The concentration of a contaminant which, if exceeded, triggers treatment or other requirements which a water system must follow.

**Inorganic Contaminants** - Contaminants of mineral origin such as metals and salts.

**Maximum Contaminant Level (MCL)** - The highest level of a contaminant that is allowed in drinking water.

**Maximum Contaminant Level Goal (MCLG)** - The level of a contaminant in drinking water below which there is no known or expected risk to health. MCLGs allow for a margin of safety and are not regulatory limits.

**Microbiological Contaminants** - Very small organisms, such as bacteria, algae, plankton, and fungi.

**Minimum Detection Limit (MDL)** - The smallest quantity of a substance that can be detected by the analytical instrument.

**Not Tested (NT)** - Testing was not performed for this contaminant during the specified calendar year.

**Nephelometric Turbidity Units (NTU)** - The unit of measurement for the cloudiness or haziness of water.

**Organic Contaminants** - Naturally occurring or synthetic substances containing mainly carbon, hydrogen, nitrogen, and oxygen.

**ppm** - Parts of contaminant per million parts water. **ppb** - Parts per billion. **ppt** - Parts per trillion.

**Treatment Technique (TT)** - An enforceable procedure that drinking water systems must follow in treating water for primary contaminants.

Substance (Unit of Measure)	MCL	MCLG	Kwajalein	Roi-Namur	Meck	Standards Met?	Possible Source
<b>ORGANIC CONTAMINANTS</b>							
THM (ppb) <sup>a</sup>	80	0	73.75 (13-159)	45 (3-78)	16 (0-32)	Yes	By-product of drinking water chlorination.
HAA5 (ppb) <sup>a</sup>	60	60	29 (0-51)	11 (1-16)	3 (0-8)	Yes	By-product of drinking water chlorination.
PFOA (ppt) <sup>c</sup>	4	0	0.63	0	0	Yes	Aqueous Film-Forming Foam (AFFF) used in firefighting applications
PFOS (ppt) <sup>c</sup>	4	0	0.74	0	0	Yes	Aqueous Film-Forming Foam (AFFF) used in firefighting applications
<b>INORGANIC CONTAMINANTS</b>							
Barium (ppm) <sup>b</sup>	2	2	0.004	0.002	0.007	Yes	Discharge of drilling wastes; Discharge from metal refineries; Erosion of natural deposits.
Fluoride (ppm) <sup>b</sup>	2	2	0.29	0.20	0.36	Yes	Erosion of natural deposits; Water additive which promotes strong teeth (Kwajalein only); Discharge from fertilizer and aluminum factories.
Lead, ppb 90 <sup>th</sup> percentile value <sup>c</sup> (# of times AL exceeded)	15 (AL)	0	1.5 (0)	1.9 (0)	<MDL (0)	Yes	Corrosion of household plumbing systems; Erosion of natural deposits.
Copper, ppb 90 <sup>th</sup> percentile value <sup>c</sup> (# of times AL exceeded)	1300 (AL)	0	88 (0)	140 (0)	23 (0)	Yes	Corrosion of household plumbing systems; Erosion of natural deposits.
<b>RADIOLOGICAL PARAMETERS</b> [Shown in units of picocuries per liter (pCi/L)]							
Gross Alpha Particle Activity <sup>d</sup>	15	0	-0.484	-0.405	-0.320	Yes	Erosion of natural deposits.
Radium-226 and Radium-228	5	0	5.6E-02	1.3E-01	8.3E-02	Yes	Naturally present in environment.
Gross Beta Particle Activity <sup>d</sup>	50	0	1.29	2.80	2.12	Yes	Decay of natural and man-made deposits.
Tritium	20,000	0	-2.9E+001	-5.9E+001	6.4E+001	Yes	Naturally present in environment.
Strontium-90	8	0	0.249	0.332	0.457	Yes	Widely dispersed in the environment as a result of global nuclear activity.
<b>MICROBIOLOGICAL CONTAMINANTS</b>							
Coliform Bacteria <sup>e</sup> (Positive samples/month)	TT	N/A	4	0	0	Yes	Naturally present in environment.
<i>E. coli</i> <sup>e</sup> (Positive samples/month)	TT	N/A	3	0	0	Yes	Naturally present in environment.
<b>TURBIDITY</b>							
Turbidity (NTU) <sup>f</sup>	>95% ≤0.3	100%	100.0%	100.0%	100.0%	Yes	Soil runoff
	1	0	0	0	0	0	

### Table Notes:

**a** - Under the Stage 2 Disinfection Byproducts Rule (DBPR) for THM and HAA5, systems must report the highest Locational Running Annual Average (LRAA) and the range of quarterly results (for all locations).

**b** - Testing for inorganic contaminants (with the exception of lead and copper) is on a three-year cycle. Results shown are from 2024 testing. Next sampling will occur in 3QFY27.

**c** - Compliance for lead/copper is determined by the 90<sup>th</sup> percentile values (the AL for lead/copper is exceeded if the concentration in more than 10 percent of tap-water samples collected during any monitoring period is higher than the AL). The 90<sup>th</sup> percentile value and the number of sampling sites exceeding the AL (in parentheses) are shown.

**d** - Gross alpha/beta results shown are from 3QFY24. Gross alpha is required every two years; gross beta is required every three years. USAG-KA samples for both every two years. Next sampling will occur in 3QFY26. Note that Radium-226 & Radium-228 results are from 3QFY2018. Values may be negative due to both the low radioactivity of the sample and the calculations prescribed in the analytical method (EPA 900, SM 306, SM 303, ASTM D 5174, etc.).

**e** - Each water system is tested weekly for coliform bacteria and *Escherichia coli* (*E. coli*) at multiple sampling sites. In the event of a positive result, repeat samples are taken within 24 hours at the original site and upstream and downstream from the original site.

**f** - Turbidity levels must be less than or equal to 0.3 Nephelometric Turbidity Units (NTUs) in at least 95% of monthly samples and shall at no time exceed 1 NTU. For 2024, the lowest monthly percentage for compliance with >95% and the highest monthly count for samples exceeding the 1 NTU limitation are shown.

**g** - Perfluorooctanoic Acid (PFOA) and Perfluorooctane Sulfonate Acid (PFOS) are manmade chemicals used in consumer products and industrial processes that are highly resistant to degradation and they bioaccumulate in the environment. In April 2024, the EPA established a MCL at 4 ppt and MCLG at 0 ppt for each chemical. Water systems must comply with regulation by 2029. The "J" qualifier in the results means it is an estimated value below the laboratory method's limit of quantification.

**Bold and highlighted indicates an exceedance in the MCL, MDCL, or AL.**

**The polyacrylamide used at USAG-KA (Superfloc N-300) as part of the drinking water treatment operations is certified by the National Sanitation Foundation as complying with the requirements for percent monomer and dosage as contained in the UES and 40 CFR 141.111.**



## Ia Eo Ej Itok Dren Jen E

Dren in idrak eo ion USAG-KA in ej itok jen dren in wot eo emoj ae ion Kwajalein, Roi-Namur, im Meck. Dren in wot ko emoj ae, wunoiki, im kebooje nan aer jerbal ilo ene kein jilu. Ilo ien mora ak anonean, ewor aiboj lal ko relap ilo Kwajalein im Roi Namur im rej kojerbali non ien rot kein. Ilo ien aikuj, Kwajalein emaron bar kanne barge kin drenin drak im jilkinlok nan aeto ko jet rej aikuji.

Dren in wot ej dren eo eman tata nan kojerbal ilo USAG-KA itok wot jen an bidodo ae im erre. Ilo juon yio, Kwajalein ej loe tarin 100 inij in wot. Jikin jook an baluun ilo Kwaj, Roi-Namur im Meik rej rejbal nan ae dren in wot. Jen ijon, dren in ej pump lok non tank kan im kottar non ien liklik im komat. Jabdrewot dren in wot ko rejjab collect ilo jikin jook ko an baluun, im rejjab bar drebdreb ilo storm drain ko, rej drebil lok im pepe ion dren in salt, eo ej peddejake aolepen enne kein. Dren in ej drebdreb ilo jikin ko naeter lens well, ko emoj likiti ilo iolap in Kwajalein im Roi-Namur. Lens well kein rej pump jeni im kojerbal kein liklik ak reverse osmosis. Emoj kelaak reverse osmosis ilo Roi-Namur ilo 2008 elkin kar koto im ekar koman an dren in salt dreton ilo lens well ko. Unit in ekoman an bidodo aer treat i dren ko im elap aer salt. Rekar bar kob 4 aiboj lal ilo Roi Namur ilo 2012 im 2013. Jerbal in etale im bukot jonak ko rej aikuj loori (baseline monitoring) renaj jino koman ilo aiboj lal kein ilo 2014 im kotmene bwe en bojrak ilo 2017.

Filter unit ko ak kein drebdreb etoon ko naetan Granular Activated Carbon (GAC) rej jerbal ion Roi-Namur im Meck nan bour etton ko ilo dren eo mok-ta jen an etal nan jikin komman dren eo. Ewor juon unit kaal emoj kolaake ilo Kwajalein February 2021. Aolep jikin koman dren kein jilu ilo USAG-KA rej kojerbal jokjok in likilik dren eo rej nae etan direct filtration process nan karreoki dren jen etoon im kij ko. Rekar kelaak kein liklik dren ilo enne kein ilo: Kwajalein 1990; Roi-Namur 1996; im Meck 2001. Kein liklik dren in idrak eo ej karreo im kojerbal jerajko non mane kij im jabdrewot etoon ko ie mok-ta jen likiti ilo tank ko naetaer "clearwells", ijo rej bed ie non tore eo jej aikuji. Rej bar kobaik fluoride nan dren nan kakajoor ni.

Ijoko rej ae dren in wot im aiboj lal rejjab mulal (rejjab mulal lak jen 10 ne) rebidodo an kare dren eo ne elon lutok. Emenin aurok bwe en wor buntan ko kab jokjok ko rej walok elane enaj wor lutok ko rejidrimkij an men ko rekauwotata, einwot fuel, oil, gas im bare-inwot kwobej ko rekauwatata im petro-leum products.

**MARSHALLESE**  
U.S. Army Garrison Kwajalein Atoll

# 2024 Water Quality Report



Published by  
V2X  
for U.S. Army Garrison  
Kwajalein Atoll  
June 2025



**Ilo 2024 Water Quality Ripoot eo ej koman ekkar non kakien ko emoj karroki ilo USAKA Environmental Standards (UES) eo, eo ej kamelet bwe ro rej leto-le-tak dren in idrak (aiboj) ren loori jonak ko emoj karroki im bareinwot tilmake melele ko raurok non ro rej idrak jen aiboj eo. Ilo melele kein, ebareinwot koba result in teej ko, jikin ko aiboj in ej itok jeni, im wawein process e aiboj in, im bar melele ko jet. Elap an aurok bwe ro rej idrak jen aiboj in ren jela im melele kin aiboj eo rej idrake jen USAG-KA. Elane ewor am kajitok ak abnono kake melele kein ilo ripoot in ikkijeen aiboj eo kwoj ilimi, jouj im kebak e lok Stan Jazwinski ilo 480-4400, ak komaron in bar bojrak lok ilo Utilities Department eo elane jab, ekwe call e Environmental ilo 480-0722.**

#### **EWOR UKOK IN RIPOOT IN ILO KAJIN BELLE:**

Naan in karon kein rej kwalok melele ko raurok kin dren in idrak eo ilo USAG-KA. Ewor ukok in ripoot in ilo kajin belle. Kir lok Environmental Department eo ilo 480-0722 kin melele ko relap lok.

**Emenin utiej buru non kwalok ke dren in idrak eo letok in USAKA ej tobare jonok ko emoj karroki non dren in idrak kin men in, ejjelok uwota ilo ilimi dren eo jen aolep bojet in dren in idrak ko.**

Aolep yio, Utilities Department eo ej boke tarin 10,000 sample in dren in idrak eo ilo USAG-KA in non lolorjake bwe tiljek in komane aiboj in jej idrak jene en erre. Kakien ko rej kipel bwe ro rej leto-le-tak dren in idrak ren teej e dren eo non lale ewor ke jabdrewot men ko retoon ie, ko me remaron in bed ilo dren in idrak eo. Result in teej ko an dren ko rej bedbed wot ion jonak ko emoj an U.S. Environmental Protection Agency (PA) eo karroki. Jonak kein rej naetaer Maximum Contaminant Levels ak MCLs.

MCLs ko rej bedbed wot ion jonak ko me rejjab maron in kwalok naninmij non armij. Juon armij emaron idraak e ruo liter in dren ilo aolepen mour eo an im jab naninmej jen e, ak emaron lon an juon mottan juon million ien bwe en ione naninmij. Jonak kein rej itok jen EPA innem USAG-KA ej loori ikijen USAKA Environmental Standards (UES) ko. UES kein rej bedbed ion karrok ko an MCL, im jet ien emaron laplok aer pen jen karrok ko an EPA. UES kein rej bareinwot konan bwe USAG-KA en komman jonan jambol ekkar nan an maron lelok nan 10,000 armej. Jonan lap im jambol in enaj jiban elon armej im kokmanmanlok drenin drak eo.

Emoj an EPA im UES karrok jet bunten ko naetan Action Level (AL). AL in ej jerbale non lale jonan etoon ko ilo dren eo, bwe ne relaplok jen jonak eo emoj karroke innem renaj aikuj in treat i im karre-oik dren eo ekkar nan kakien ko. Waan jonak in etoon ko remaron loi ej enwot lead im koba (copper).

Utilities Department, USAG-KA Hospital, im Defense Center eo nan Public Health ilo Aberdeen, Maryland ej droulul ko jilu rej teej e aiboj in idrak eo ion USAG-KA. Ibben jikin jerbale kein jilu, USAG-KA ej bareinwot make etale tiljek in an jikin kein koman dren eo jerbale, koman teej ko remakijkij non lolorjake erre eo an dren in idrak eo ej driwojlok, im bareinwot lale bwe jool en jab tobare aiboj lal eo.

Jikin koman dren eo ej jerbale non letok dren in idrak eo etiljek im erre. Jiban kejbarok dren in idrak eo nimed. Jukjuk in bed in ad, mour kein ad, kab an ro nejid rej bedbed ion kejbarok in am. Bok koman; kejbarok dren in idrak eo ilo wawein ko rekkar.



**Reverse Osmosis**



**Granulated  
Activated Carbon  
Filters**

## Melele Ko Raurok Ikkijeen Ejmour

Aolep dren in idrak ko, ebar kobalok dren ko ilo bato ak plastic ko, emaron in wor jijidrikdik in men ko retoon ie. Ijo wot ke, elap an aurok bwe jen kemejmej bwe mene ewor men kein retoon ilo dren in idrak eo jej ilimi, ejab melele in ke jemaron in naninmij jen dren eo. Kir lok Environmental Protection Agency Safe Drinking Water Hotline (800-426-4791) non boki melele ko relaplok.

Aolep dren in idrak ko (ko im rej itok jen bojet im ko ilo bato in aiboj) rej itok jen reba, lake, streams, ponds, reservoirs, springs im aiboj lal. Ilo an dren emakitkit ion enne ak ilo bulon lal, ej koba lak jet minerals ie, jet ien ej lon baijin ko jen radioactive material eo im ej itok jen menin mour ko ak armej. Ewor jet armij emojno anbwini. Armij rein aolep ewor aer naninmij enwot cancer im rej chemo, ekar koman jen aer mwijmwij, ak mour in HIV/AIDS im ro ewor aer naninmij jiron im likao remaron jab jelet er. Rit-to im bareinwot ninnin ko naninmij in emaron bar bed ib-beir. Armij rein rej aikuj in kebaak jikin takto ko aer im bok melele. EPA/ CDC guidelines ko kin infection in cryptosporidium im kij ko jet rej bed ilo Safe Drinking Water Hotline.

Elane elap im lon lead enaj komman joreen ko rellap nan ejmour, ekka an bar walok nan kora ro rej bororo im ajiri jiddrik ro. Lead ko ekkar aer walok ilo dren in idraak ko rej itok im walok jen pipe ko inabojen im iloan imoko jej jokwe ie. Ej an USAG-KA eddo nan kotoor im lewaj dren in idraak eo erre, ak ejjab maron in loe, etale, jela im edoiki kain men drikdik ko rej dreloni im bed iloan pipe ko. Elane dren ko ilo pipe ko renaj etolok aer toor ilo kotoan eo aetok, kwomaron in komman bwe kwon jab joreen jen lead koi lo am kotoore im kadriwojlok jen bojet eo am iuumin 30 second ko lok nan 2 minute ko mokta jen am naj ko-jerbal dren eo nan idraak ak komman mona kake. Elane ewor am uwota im inebata kin lead ilo dren eo kwoj aikuj in etale mokta. Melele ko jet kin lead ilo dren in idraak ko, kilen im wawein etale, im bunten ko nan jolok im kadriklok joreen ko nae dren ej alikar ilo Safe Drinking Water Hotline ak ilo [www.epa.gov/safewater/lead](http://www.epa.gov/safewater/lead). Nan melele ko jet, jouj im kir lok V2X Environmental Department ilo 480-0722.

## Per/Poly-Fluoroalkyl Substance Monitoring

Per/Poly-Fluoroalkyl Substances (PFAS) are a large group of Per/Poly-Fluoroalkyl Substances (PFAS) eo ej juon kamikol koba ippen dren eo im armij make ekar ejaake im kojerbale im ej jerbal einwot juon kamikol eo ekka am kojerbale. Ekar koman jen yio ko mokta lok einwot 1940s ko, PFAS remaron jerbal nan jelmae meneen, oil, elajo, kurij, im dren. Kon menin, kamikol in ekar ejaak im elap an aurok ibelakin lal in ilo kajojo jikin kamikol ko, im ej bareinwot un eo unin an lukun aurok nan kajojo jukjuk in bed. Kamikol in an PFAS ej bed ilo kajojo jikin jerbal ko ibelakin lal in, koba ioon Kwajalein Atoll. Bwijin riAmedaka moj loe ke kamikol in ej bed ilo iaal in botoktok ko aer.

Ilo kar April 2024, EPA eo ekar kalikar ke drenin idraak ko rekar ekar jonok im liklik er ippen ruo iaan PFAS kamikok; PFOA innem kab PFOS. Ilo MCL jonok eo an 4ppt im ilo MCLG jonok eo an 0ppt rekar jet jonok ko raar ekar ilo kamikol kein ruo innem ekar bok jikier ilo June 2024. Dren ko rekar moj kajejjot er ioon Kwajalein, Roi-Namur, im kab Meck ilo jikin dren ko rekar jet sample ilo CY 2024 im dre-drelok in jonok ko rekar bed ilal in MCLs eo. Ilo jonok moj etali rekar loe ear wor 0.74Jppt PFOA im 0.63J ppt in PFOS

ilo jikin dren eo ioon Kwajalein. "J" ne ej jutak kon melele in emoj an jikin katak kake eo kab jikin etale eo loe ke ejejot

## Etale jonan Coliform im E.Coli

Labol 1 in etale eo ekar walok ilo jikin dren eo Kwajalein ilo kar 30 January, 23 April, im 1 June itok wot jen an wor positive (TC+) im/ak walok lum (E.coli). Ne ej wor labol 1 in etale eo ej konke elon lak jen juon alen an walok TC+ im/ak wor lum ilowaan wot juon alon. Labol 2 eo ej bok jikin elane labol 1 in etale eo ej ejaak im walok ilowaan wot 12 alon aetokin. Konke ekar wor jilu etale in labol 1 eo im ekar walok ilowaan wot alon kein 12, etale im jerbal ko an labol 2 rej aikuj bok jikier. Elap an aurok nan komejajaik jerbal in etale kein ien eo emokajtata ne ej wor positive im sample ko rej aikuj bojak elane jet iaer ekar negative nan TC+ im lum. Kon menin ekar ejjelok alikar nan drenin in idraak ko.

Ilo February 2024, jikin ejmour eo an Army Public Health Command-Pacific ekar wonmanlok im komane jerbal ko an ilo etale eo an Labol 2 ilo jikin dren eo ioon Kwajalein nan an maron komane jet jonok ko rejimwe im jejjot nan kajeon bo-brae result ko im renana. Wawein katak kake eo ekar lukun aikuj kein jerbal im rijerbal ro im ewor aer melim im jonok nan komane jerbal in im kajeon kalikar im bobrae jen an walok jonok ko rejab jimwe im jejjot. EPA eo an US ekar barein-wot kwalok an itok limoin nan an maron loe tok USAG-KA nan bok jonok kon an jikin dren eo an. Tokelikin wawein eo ekar walok ilo June 2024, ekar ejjelok tok im kio positive in E.coli ilo dren ko im kar eindrein maanlok ilo kar 2024.

## Water Quality Monitoring

USAG-KA ej teej e im etale dren in idrak eo kwoj ilimi non lale ewor etoon ke dren eo, ekkar non kakien ko ilo UES eo im DEP nan Drinking Water Treatment. Ekkar non jonan etoon ko ilo dren in idrak eo, UES enaj letok ien etale. Ewor etoon ko jej teeji elikin juon wiik, juon allon, juon kuwata, juon yio, ruo yio, jilu yio, emen yio, kab ruatim-juon yio. Jaat in ilal ej kwalok melele ko ikkijeen men ko retoon rar bed ilo dren in idrak eo ion USAG-KA in ilo kotan in January 1, 2024 non December 31, 2024. Elane etoon kein rejjab walok ilo jaat in, melelein ke rar bed ilal in jonak ko redriktata emoj karroki ak minimum detection limit (MDL).

Ijin ilal ej lajra kin men ko rekar teeji im etali ilo 2024:

- Aesthetic Constituents and Sodium;
- Disinfection Byproducts [Total Trihalomethanes (TTHM) and Five Haloacetic Acids (HAA5)]
- Volatile Organic Chemicals
- Total Organic Carbon (TOC)
- Nitrate/Nitrite Combined
- Pesticides and Synthetic Organic Chemicals (SOCs)
- Inorganic Chemicals (IOCs)
- Lead and Copper



## Tarlep in teej ko rej kemlet bwe dren eo ion USAKA emon non idrak

Non jiban yuk melele ken naan in kamelele ko aer ilo jaat in ilal, errein ej melele ko emoj kollaajraki:

**Action Level - AL** in ej jermal non lale jonan etoon ko ilo dren eo, bwe ne relaplok jen jonak eo emoj karroke innem renaj aikuj in treat i im karreoik dren eo ekkar nan kakien ko.

**Inorganic Contaminants** - Etoon in mineral im ej itok jen aen im jool

**Maximum Contaminant Level** - Jonak eo ilontata ikkijeen etoon ko rej walok ilo dren in idrak ko im emoj an EPA karroke.

**Maximum Contaminant Level Goal** - Jonak in etoon in dren in idrak eo im ejjab jelet ejmour eo an armij. MCGLs ej nan kakkol wot ak ejjab rubwe jonak ko emoj an EPA karroki.

**Minimal Detection Limit (MDL)**- Jonak ko redrikdrik im rej loi ne rej kojerbal kein teej dren eo. Microbial Contaminants- Etoon im kij ko jejjab maron loi einwot bacteria, algae, plankton im fungi. NT - Rar jab tej e - rar jab koman kakolkol in tej nan contaminant in.

**Nephelometric Turbidity Units (NTU)**- Jonak eo rej kojerbal nan measure e lim in dren eo.

**Organic Contaminants** - Kij ak etoon kein ekka aer walok ilo koto ko jej emenonoiki einwot carbon, hydrogen, nitrogen, im oxygen.

**ppm** – jonan mottan in etoon, kij ak chemical ko rej loi iloon million particulates in dren; **ppb** – jonan mottan in etoon, kij ak chemical ko rej loi iloon billion particulates in dren; **ppt** – jonan mottan in etoon, kij ak chemical ko rej loi iloon trillion particulates in dren

**Treatment Technique (TT)** - Jokjok eo emoj an jejjet kutien nan drinking water system ko bwe ren loore ilo air treat i dren ko nan primary contaminants.

Substance (Unit of Measure)	MCL	MCLG	Kwajalein	Roi-Namur	Meck	Standards Met?	Possible Source
<b>ORGANIC CONTAMINANTS</b>							
TTHM (ppb) <sup>a</sup>	80	0	73.75 (13-159)	45 (3-78)	16 (0-32)	Yes	By-product of drinking water chlorination.
HAA5 (ppb) <sup>a</sup>	60	60	29 (0-51)	11 (1-16)	3 (0-8)	Yes	By-product of drinking water chlorination.
PFOA(ppt) <sup>a</sup>	4	0	0.63	0	0	Yes	Aqueous Film-Forming Foam (AFFF) used in firefighting applications
PFOS (ppt) <sup>a</sup>	4	0	0.74	0	0	Yes	Aqueous Film-Forming Foam (AFFF) used in firefighting applications
<b>INORGANIC CONTAMINANTS</b>							
Barium (ppm) <sup>b</sup>	2	2	0.004	0.002	0.007	Yes	Discharge of drilling wastes; Discharge from metal refineries; Erosion of natural deposits.
Fluoride (ppm) <sup>b</sup>	2	2	0.29	0.20	0.36	Yes	Erosion of natural deposits; Water additive which promotes strong teeth (Kwajalein only); Discharge from fertilizer and aluminum factories.
Lead, ppb 90 <sup>th</sup> percentile value <sup>c</sup> (# of times AL exceeded)	15 (AL)	0	1.5 (0)	1.9 (0)	<MDL (0)	Yes	Corrosion of household plumbing systems; Erosion of natural deposits.
Copper, ppb 90 <sup>th</sup> percentile value <sup>c</sup> (# of times AL exceeded)	1300 (AL)	0	88 (0)	140 (0)	23 (0)	Yes	Corrosion of household plumbing systems; Erosion of natural deposits.
<b>RADIOLOGICAL PARAMETERS</b> [Shown in units of picocuries per liter (pCi/L)]							
Gross Alpha Particle Activity <sup>d</sup>	15	0	-0.484	-0.405	-0.320	Yes	Erosion of natural deposits.
Radium-226 and Radium-228	5	0	5.6E-02	1.3E-01	8.3E-02	Yes	Naturally present in environment.
Gross Beta Particle Activity <sup>d</sup>	50	0	1.29	2.80	2.12	Yes	Decay of natural and man-made deposits.
Tritium	20,000	0	-2.9E+001	-5.9E+001	6.4E+001	Yes	Naturally present in environment.
Strontium-90	8	0	0.249	0.332	0.457	Yes	Widely dispersed in the environment as a result of global nuclear activity.
<b>MICROBIOLOGICAL CONTAMINANTS</b>							
Coliform Bacteria <sup>e</sup> (Positive samples/month)	TT	N/A	4	0	0	Yes	Naturally present in environment.
<i>E. coli</i> <sup>e</sup> (Positive samples/month)	TT	N/A	3	0	0	Yes	Naturally present in environment.
<b>TURBIDITY</b>							
Turbidity (NTU) <sup>f</sup>	>95% ≤0.3	100%	100.0%	100.0%	100.0%	Yes	Soil runoff
	1	0	0	0	0	0	

### Table Notes:

**a** - Under the Stage 2 Disinfection Byproducts Rule (DBPR) for TTHM and HAA5, systems must report the highest Locational Running Annual Average (LRAA) and the range of quarterly results (for all locations).

**b** - Testing for inorganic contaminants (with the exception of lead and copper) is on a three-year cycle. Results shown are from 2024 testing. Next sampling will occur in 3QFY27.

**c** - Compliance for lead/copper is determined by the 90<sup>th</sup> percentile values (the AL for lead/copper is exceeded if the concentration in more than 10 percent of tap-water samples collected during any monitoring period is higher than the AL). The 90<sup>th</sup> percentile value and the number of sampling sites exceeding the AL (in parentheses) are shown.

**d** - Gross alpha/beta results shown are from 3QFY24. Gross alpha is required every two years; gross beta is required every three years. USAG-KA samples for both every two years. Next sampling will occur in 3QFY26. Note that Radium-226 & Radium-228 results are from 3QFY2018. Values may be negative due to both the low radioactivity of the sample and the calculations prescribed in the analytical method (EPA 900, SM 306, SM 303, ASTM D 5174, etc.).

**e** - Each water system is tested weekly for coliform bacteria and Escherichia coli (*E. coli*) at multiple sampling sites. In the event of a positive result, repeat samples are taken within 24 hours at the original site and upstream and downstream from the original site.

**f** - Turbidity levels must be less than or equal to 0.3 Nephelometric Turbidity Units (NTUs) in at least 95% of monthly samples and shall at no time exceed 1 NTU. For 2024, the lowest monthly percentage for compliance with >95% and the highest monthly count for samples exceeding the 1 NTU limitation are shown.

**g** - Perfluorooctanoic Acid (PFOA) and Perfluorooctane Sulfonate Acid (PFOS) are manmade chemicals used in consumer products and industrial processes that are highly resistant to degradation and they bioaccumulate in the environment. In April 2024, the EPA established a MCL at 4 ppt and MCLG at 0 ppt for each chemical. Water systems must comply with regulation by 2029. The "J" qualifier in the results means it is an estimated value below the laboratory method's limit of quantification.

**Bold and highlighted indicates an exceedance in the MCL, MDCL, or AL.**

**The polyacrylamide used at USAG-KA (Superfloc N-300) as part of the drinking water treatment operations is certified by the National Sanitation Foundation as complying with the requirements for percent monomer and dosage as contained in the UES and 40 CFR 141.111.**



**American  
Red Cross**

Service to the Armed Forces

## **Volunteer Opportunity at Kwajalein Atoll**

Join the American Red Cross and help bring our Services and Programs to the Kwajalein Atoll community!

**Online & Virtual Training Provided**

**No experience needed!**

We provide all necessary training. Just bring your passion and commitment to helping others!

Contact **Alana Wilson** at [alana.wilson@redcross.org](mailto:alana.wilson@redcross.org)

Let's work together to build a more prepared and resilient community.



## **Remember the 3-R's of UXO Safety!**



RECOGNIZE



RETREAT



REPORT

Unexploded ordnance are munitions that fail to detonate during live fire training. They are **extremely dangerous** and could explode if tampered with, even though the Kwajalein ordnance is 80-years-old.

**NEVER** touch UXO and report the location of **ANY** suspected UXO to the UXO Team **IMMEDIATELY** at:

Phone: 480-1550/1433

Email: [Darren.r.Wheeldon.ctr@army.mil](mailto:Darren.r.Wheeldon.ctr@army.mil)





# WEEKLY TROPICAL WEATHER THREAT OUTLOOK

RTS WEATHER STATION STAFF

## Discussion:

At 10 days into July, we recorded about 4.3 inches of rain, which is only 0.7 inches below normal for the month. So far in 2025, we have only received 24.5 inches of precipitation, which is 12 inches below normal for the year. July sees daily showers for at least part of the atoll. The next seven days will see a wet pattern, as a series of troughs transit the central RMI. There will also be an augmented thunderstorm risk, as is typical with transiting atmospheric waves in summer. There were no thunderstorm days over the last seven days. A thunderstorm day is defined as an "in situ" lightning strike within five miles of the weather station or thunder heard. The Madden-Julian Oscillation (MJO) looks to be fairly neutral for the next few days, with not much effect on convective activity across the RMI. After that, toward the early-middle part of next week, it appears likely to trend toward its positive phase for the Western Pacific, bringing enhanced convection to the

RMI. The Intertropical Convergence Zone (ITCZ) is a bit more fragmented at this time but still offering assistance to trade-wind troughs that come through east to west. This positioning will allow for our normal increased shower coverage for the atoll for the next seven days, with episodic transiting troughs that greatly increase shower coverage. The El Nino Southern Oscillation (ENSO) is in ENSO-neutral conditions. With the end of La Nina, the transition to ENSO-neutral favors increased shower coverage, entering the rainy season. Sea surface temperatures (SST) in the central Pacific between the RMI and the Date Line are now at about normal. Besides increased rainfall, these warming near normal SSTs tend to favor tropical cyclone development, but the RMI is still outside its climatological peak tropical cyclone season, thus little threat is expected for the rest of July.

## Tropical Cyclones:

No significant tropical cyclone activity expected to affect anywhere in Micronesia, the Mariana Islands, Wake

Island or Hawai'i. We are now in the tropical cyclone season for the western Pacific, though not quite at its peak.

## Damaging West Winds / Westerly Swell:

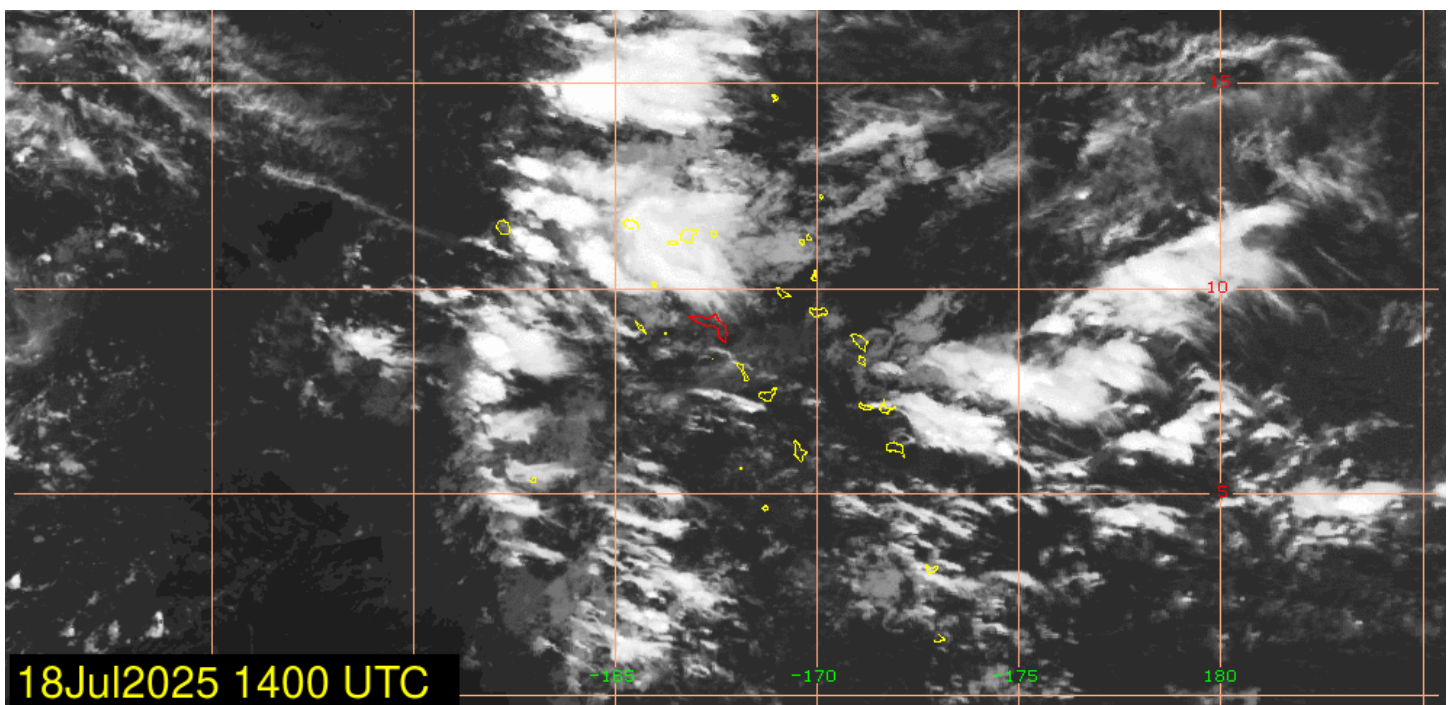
None expected. Most of Micronesia is northeast trade wind dominant. There will be some westerly winds over the western FSM, but are not expected to reach the RMI.

## Swell / Tide Inundation for Kwajalein Atoll and Wake Island:

Tomorrow will be the waning half-moon, which will see us in just neap level high tides all below until the 23rd. Winds will be a little higher than normal July hovering around 11-13 knots out of the east-northeast, occasionally coming down into the single digits out of the east-southeast with the passage of troughing. There will be gusty winds possible near any heavy showers that occur, particularly if those showers occur off to our immediate east. A Small Craft Advisory (SCA) may be issued for short periods of time on the open

lagoon and ocean during instances of gusty outflow. High Surf Advisory (HSA) conditions are not expected for the next seven days.

**Purpose:** This weekly briefing is delivered Thursday mornings to island leadership. The intention of this briefing is to provide situational awareness of weather events that may interrupt operations and transportation around Kwajalein, to/from Hawaii and Guam, and in the Wake vicinity. The main threat assessed in this brief is existing and potential development of tropical cyclone activity. This brief also provides an outlook of abnormal winds, sea state, and precipitation guidance for next 7 days around the Kwajalein Atoll. The distribution list will also receive updates on any developing tropical cyclone activity in the Kwajalein region that occur between the weekly outlook product. ⚠





## 25-26 KINDERGARTEN ENROLLMENT

**CALL**  
480-3601  
for an  
online  
enrollment  
form link



**SCAN  
ME**

## WEATHER

RTS WEATHER STATION STAFF

### WEATHER DISCUSSION

Expect a brief break in the wet weather pattern as the workweek wraps up. On Saturday, easterly trade winds of 10-15 knots may return as the weakening Intertropical Convergence Zone (ITCZ) shifts eastward, allowing for a short period of drier conditions. Looking ahead to the weekend, the ITCZ may re-strengthen and drift closer to the central Marshall Islands. This shift could bring increased chances for thunderstorms and periods of heavy rainfall. As we head into the start of next week, wet weather is expected to return. Light trade winds and a weakening subtropical ridge to the north may

allow the ITCZ to settle over the region—raising the potential for showers and thunderstorms across the atoll.

### SATURDAY

Partly sunny with stray showers. NE-SE at 13-18 knots with higher gusts near showers.

### SUNDAY

Partly sunny to mostly cloudy with isolated to widely scattered showers and a chance of stray thunderstorms. NE-SE at 11-16 knots with higher gusts near showers.

### MONDAY

Partly sunny to mostly cloudy with isolated to widely scattered showers and a chance of stray thunderstorms. NE-E at

10-15 knots with higher gusts near showers.

### NEXT WEEK

Partly sunny to mostly cloudy with isolated showers and a chance of stray thunderstorms to begin the workweek, with winds from the E-SE at 5-10 knots with higher gusts near showers. ⚡



## SUN-MOON-TIDES

	SUNRISE SUNSET	MOONRISE MOONSET	HIGH TIDE	LOW TIDE
SUNDAY	6:39 a.m. 7:12 p.m.	1:41 a.m. 2:39 p.m.	12:01 p.m. 2.4'	6:14 a.m. 1.0' 5:59 p.m. 0.9'
MONDAY	6:39 a.m. 7:12 p.m.	2:36 a.m. 3:42 p.m.	12:58 a.m. 3.5' 1:42 p.m. 2.5'	7:52 a.m. 0.7' 7:25 p.m. 0.7'
TUESDAY	6:39 a.m. 7:12 p.m.	3:36 a.m. 4:46 p.m.	2:10 a.m. 3.9' 2:51 p.m. 2.7'	8:57 a.m. 0.3' 8:31 p.m. 0.5'
WEDNESDAY	6:39 a.m. 7:12 p.m.	4:39 a.m. 5:49 p.m.	3:05 a.m. 4.2' 3:41 p.m. 3.0'	9:45 a.m. -0.1' 9:23 p.m. 0.2'
THURSDAY	6:39 a.m. 7:12 p.m.	5:43 a.m. 6:47 p.m.	3:52 a.m. 4.5' 4:22 p.m. 3.3'	10:26 a.m. -0.4' 10:08 p.m. -0.1'
FRIDAY	6:39 a.m. 7:12 p.m.	6:44 a.m. 7:40 p.m.	4:33 a.m. 4.7' 4:59 p.m. 3.5'	11:02 a.m. -0.5' 10:47 p.m. -0.3'
JULY 26	6:40 a.m. 7:12 p.m.	7:40 a.m. 8:26 p.m.	5:10 a.m. 4.7' 5:33 p.m. 3.6'	11:35 a.m. -0.5' 11:23 p.m. -0.3'

**FOR QUESTIONS ABOUT ISLAND LIFE AND ARMY REGULATIONS, PLEASE CALL THE COMMANDER'S HOTLINE AT 480-1098. FOLLOW THE USAG-KA FACEBOOK PAGE TO RECEIVE INFORMATION AND UPDATES REGARDING SAFETY INFORMATION, EVENTS, AND OFFICIAL COMMAND ACTIVITIES.**



*Until Next Week!*

