

VOLUME 65 NUMBER 77

JUNE 21, 2025

THE KWAJALEIN HOURGLASS





PHOTOS BY CHRISTY WAGNON

ABOVE: K5 side Steve Collelo swims with batfish.

COMMUNITY

EXPLORING THE TATEYAMA MARU (K-5 SIDE): A KWAJALEIN WWII WRECK DIVE

HOURLASS REPORT

By Christy Wagon; CYS
Deputy Director

Kwajalein Atoll is a diver's paradise, offering an abundance of coral reefs, marine life, and historical World War II wrecks. Among these, the Tateyama Maru, commonly referred to as the "K-5 Side," due to its location in regard to Coast Guard marker buoy K-5, stands out as a must-visit site for wreck diving enthusiasts.

The Tateyama Maru was a Japanese merchant vessel, probably repurposed as a water carrier during World War II. On December 3, 1943, the ship was sunk by one or more 1,000-pound bombs dropped by U.S. forces. Today, it rests

on its starboard side at the depth of approximately 140 feet in the lagoon near Kwajalein. Because of its depth and the potential presence of unexploded ordnance, only divers with Advanced Open Water certification or higher should attempt to explore it.

K-5 Side is full of marine life, and the hull is decorated with large, vibrant purple elephant ear sponges that bring the site to life with color. During our dive at K-5 Side, we were joined by an incredibly friendly school of batfish that swam alongside us throughout the exploration. Batfish are known for their inquisitive nature. Often

seen in small groups, they are social reef dwellers that seem to enjoy the company of divers. Their tendency to hover curiously near people and follow them on ascents has earned them the nick name "puppy dogs of the reef." In addition, they play a role in cleaning reef environments by eating algae, contributing to the ecological health of the site.

The Tateyama Maru (K-5 Side) offers a blend of history and marine biodiversity. Its accessibility from Kwajalein Small Boat Marina and the many features to explore make it a standout dive site. ▴



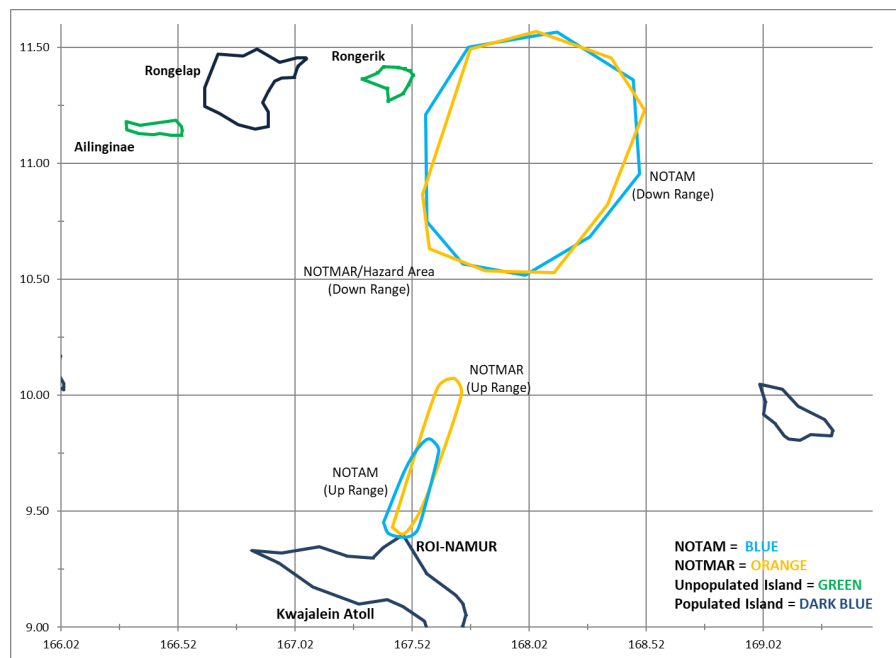
NASA

Sporadic E Electro Dynamics (SEED)

Around the 13 June – 4 July timeframe NASA will be conducting a launch of NASA Sporadic E Electro Dynamics (SEED) and will consist of two individually launched sounding rockets with several days in between. Planned impact is north of Kwajalein Atoll in the Broad Ocean Area (BOA).

The Mid-Atoll Corridor WILL be open during this timeframe.

If traveling in the area during this time frame, avoid the indicated areas during the testing window.



In the event of a missile failure there is an unlikely probability that debris may fall on populated and unpopulated land masses in the Republic of the Marshall Islands. As an immediate precautionary measure, local population should stay 150 feet away from any mission debris and report the location of the debris to the U.S. Army Kwajalein Atoll.



EARN YOUR TEAM KWAJ TAB!

Front Cover: SCUBA Egg Hunt by Chrsity Wagnon

Back Cover: Sailboats by Melissa Dethlefsen

The Kwajalein Hourglass is named for the insignia of the U.S. Army's 7th Infantry Division, which liberated the island from the forces of Imperial Japan on Feb. 4, 1944. The Kwajalein Hourglass is an authorized publication for military personnel, federal employees, contractor workers and their families assigned to U.S. Army Garrison-Kwajalein Atoll.

Contents of the Hourglass are not necessarily official views of, or endorsed by, the U.S. Government, Department of Defense, Department of the Army or USAG-KA. It is published Saturdays in accordance with Army Regulation 360-1.
Phone: Defense Switching Network: 315-480-5169
Local phone: 480-5169

Garrison Commander.....Col. Matthew Cannon
Garrison CSM.....Command Sgt. Maj. Stanley Jackson
Public Affairs Officer.....Sherman Hogue
Editor.....Muhammad Rasheed
Communications Specialist.....Stephen Elson
Media Capture.....Melissa Dethlefsen
Story Writer.....Christy Wagnon



PHOTO BY SUZY RICCARDI; INSET PHOTO BY CHRISTY WAGNON

COMMUNITY

YOUR GATEWAY TO THE LAGOON: GETTING YOUR BOAT LICENSE ON KWAJALEIN

HOURLASS REPORT

By Christy Wagon; CYS Deputy Director

Floating at Bigej, scuba diving at the Prinz Eugen, or heading out for a day of deep sea fishing are a few of the countless reasons to become a licensed boat captain on Kwajalein. The Small Boat Marina (SBM) issues licenses and the structured process ensures all operators are trained for safety and local conditions.

The first step towards obtaining your boating license is to register and pay \$40 for the Boating Orientation Class at the SBM during normal operating hours. Upon registration, you'll receive the "Recreational Boating Guide," which is essential for the course.

The first night of the class includes a field trip to the SBM and the course concludes with a written exam.

Next is to complete an orientation cruise with a licensed boat operator. This hands on experience allows you to practice driving the boat, become familiar with ocean passes, marker and channel buoys, and locations of coral heads that could be dangerous to boat operations. You'll also demonstrate proper radio communication and situational awareness on the water.

After the orientation cruise, you'll complete a practical test with an SBM employee. During this test,

you'll demonstrate your ability to independently operate a boat, including driving through SAR Pass, executing a man-overboard drill, and safely docking the vessel.

The orientation cruise and practical boat handling test are scheduled at operator's discretion at the SBM during normal business hours. Although you do not pay additional fees for these steps, you will be responsible for fuel costs for each of these outings.

Applicants must be at least 16 years old. Minors (under 18) must have a parent sign the application in person and may only operate a boat under adult supervision. Once

licensed, your credentials are valid at both Kwajalein and Roi-Namur marinas, provided you complete the appropriate orientation cruise for each island. After three years of absence from USAG-KA, returning residents must re-take the full licensing process.

By following this structured path, residents can safely and confidently explore the waters of Kwajalein Atoll.





PHOTOS BY ERIN GERSEMA

ABOVE: Ladies' Golf team. BELOW: Suzy Riccardi, Jordan Razook, Azie Nche, Christy Wagnon, Katie Collelo

COMMUNITY LADIES' GOLF NIGHT

HOURLASS REPORT

By Christy Wagnon; CYS
Deputy Director

When MWR's Matt Griffin floated the idea of a women's golf night at the Kwajalein Country Club, he wasn't sure what to expect. What he got was a group of 12 women—ranging from complete beginners to seasoned players—who showed up for an evening of fun, laughter, and a few swings.

The event had no formal instruction, just three relaxed holes of golf followed by a social hour at the clubhouse. Experienced players like Jena Lovato and Katie Collelo were supportive and encouraging, helping newer golfers feel welcome and comfortable.

Their guidance made the night enjoyable for all.

The evening was filled with lighthearted moments, plenty of laughter, and good-natured jokes about missed swings and "practice shots." By the end of the event, everyone left smiling and excited to explore the sport further and excited for the next Lady's Night.

Griffin plans to host another ladies' night in the future. In the meantime, he offers a weekly Family Golf Night on Wednesdays from 5 to 6 p.m. a day for family and children to hit balls and learn about golf. All ages are welcome,

but children sized clubs are limited. Children under 14 must be accompanied by an adult. He also offers a Golf Clinic on Thursdays from 4:30 to 6:00 p.m. for ages 15 and older. The sessions are free, at the Kwajalein Country Club, and all equipment is provided—just bring your curiosity and a willingness to try something new. ❏





PHOTOS BY VIVIANA DELCAMPO

ABOVE: Rescue diver candidates in the pool.

COMMUNITY FROM CONFIDENCE TO COMPASSION: WHAT RESCUE DIVING TEACHES YOU

HOURLASS REPORT

By Christy Wagon; CYS Deputy Director

Becoming a PADI Rescue Diver is one of the most rewarding milestones in a diver's journey. This course goes beyond personal dive skills, shifting the focus to recognizing, preventing, and managing dive emergencies, making you a more capable, aware, and responsible dive buddy.

The Rescue Diver course combines knowledge development, confined water practice, and open water scenarios to build real-world rescue skills. You'll learn self-rescue techniques, how to manage stress in other divers, and

how to respond to situations like panicked divers, missing divers, and unresponsive divers both at the surface and underwater.

To enroll, you must be at least 12 years old, hold a PADI Advanced Open Water certification, and have completed CPR/First Aid training within the last 24 months (PADI Emergency First Response meets this requirement).

Day One focused on pool training where we practiced essential rescue techniques, including surfacing with an unresponsive diver and delivering rescue breaths while towing a victim. One surprising lesson was how much gear and visibility matter—bright colors help rescuers locate a

diver quickly.

On Day Two, we headed to the Ski Steps for scenario-based training. While we were practicing a separate skill on land, our instructor, David Spears—ever the trickster—surprised us with an unannounced rescue drill. Suddenly, a diver began calling for help, and we sprang into action, applying everything we had learned to carry out a simulated search and rescue. It was one of the most memorable moments of the course: dynamic, hands-on, and adrenaline-charged.

Later that day, we completed the notorious Rescue #7, which requires towing an unresponsive diver while giving rescue breaths. Lexie Brown

shared, "The most challenging part of the course was to rescue an unresponsive diver



on the surface. Kicking back to shore while giving rescue breaths was a challenge! I'm so glad we practiced this scenario several times." That repetition builds muscle memory and real confidence.

For Zach Brown, one moment stood out: "While working through the rescue scenarios in the course, there was a moment where it hit me that this could one day be someone I know who needs rescuing. That realization made the course feel even more meaningful, just knowing that these skills could

help me save a life."

These reflections echo a common sentiment. Many divers say this course is the turning point where they felt truly confident underwater. It sharpens problem-solving, increases awareness, and prepares you to assist in real emergencies. Whether you're diving with friends or pursuing professional certification, rescue skills enhance safety for everyone.

When asked whether the Rescue Diver course made her a better dive buddy, Amanda McQuarrie reflected, "Yes it did, or at least I hope it will. I feel more prepared to recognize and react to situations of distress. I think just knowing and practicing the scenarios will help me not panic myself."

Instructor David Spears reflected on why Rescue Diver is such a transformative experience: "When I took the Rescue course, my instructor told me, 'Up until then you were diving for yourself. After Rescue, you'll be diving for others.' That really stuck with

me."

Over the years, David has performed a number of real-life rescues—from helping entangled divers in kelp and fishing line, to managing runaway ascents, assisting dry suit divers, resolving underwater altercations, and even helping a diver who experienced vertigo after a ruptured eardrum.

He shares, "For my students, I want them to walk away confident in their ability

to handle emergencies, solve problems, and most importantly—look after their fellow humans. Because all we've got is love."

Rescue Diver isn't just a certification—it's a mindset. It shows you're committed to being a safe, prepared, and supportive dive buddy. If you're ready to step up, challenge yourself, and be someone others can count on, this course is your next step. ▴



Kwajalein Island Trash & Recycling

Residential Trash Collection	480-1760
Yard Vegetation Collection	480-1890
Hazardous Waste Pickup Line	480-8858



TRASH & RECYCLING PICKUP SCHEDULE

The Green Residential TRASH receptacles are collected every **Tuesday and Friday**.

The blue RECYCLE bins are also collected every **Tuesday and Friday**.

The large black General Solid Waste Community Containers are emptied on Monday, Wednesday, Thursday, and Saturday.

Safety First! Please keep any curious children away from the Compactor Truck as it feeds contents into the truck.

Recyclable materials are also collected by both *solid waste* and *horizontal maintenance personnel*, in conjunction with general trash collection. Currently the island only recycles glass, aluminum, metal, and bulk organic materials. **Cardboard and plastics are not recycled materials on Kwajalein.** These items should be placed into the general trash stream for disposal/incineration.



Residential users will be given a **green trash** receptacle and a smaller **blue receptacle** for recyclable materials. It is requested that residences place their recyclable items into the blue containers, and stack larger materials next to the bins. Lawn clippings and leaves should be bagged and placed next to bins. Palm fronds and coconuts should also be stacked up next to the bins for removal by horizontal maintenance personnel.

EARN YOUR TEAM KWAJ TAB

1. Attend Col. Cannon's TEAM KWAJ brief (either Teammate or Community version), read and adhere to the TEAM KWAJ Teammate Pact, presented at initial town halls, and periodically thereafter.

2. Attend the Island Newcomer's Briefing.

3. Attend at least one group greeting at air terminal for personnel arriving on island. Make them feel welcome and show them we are happy they are on Kwaj with us.

4. Attend at least two garrison after-hours team-building or social events (TEAM KWAJ Happy Hour, Commander's Call, Hail/Farewell).

5. Attend at least two TEAM KWAJ PT/Wellness sessions. Become a regular attendee!

6. Visit Marshallese Cultural Center in last 3 months prior to tab award.

7. Visit Ebeye, Third island or Majuro in last 3 months prior to tab, use a Marshallese phrase or two and visit a store/restaurant.

8. Tell three co-workers how to earn the TEAM KWAJ tab.

9. Swim, snorkel, boat or paddle on the lagoon at least once with a teammate.

10. Complete the TEAM KWAJ Circle-island 6-mile ruck march/walk/bike and read all historic battlefield markers. This is an organized USAG-KA hosted event several times per year.

11. Mission Partner wild card event—discuss with your supervisor any additional organizational requirement. Could be knowledge-based, achievement-based, or physical challenge.

12. Final event, "Board of Review" — meet with Col. Cannon face-to-face individually or in a small group with all requirements fulfilled. Schedule with garrison front office. Discussion items may include but are not limited to; TEAM KWAJ pact - "Healthy Community of Excellence," Kwaj history, Marshallese culture, military/strategic missions and their significance, and future operational potential.

Once you have the first 11 items completed, contact Terri Wilson at 480-4322 or at terri.l.wilson20.civ@army.mil to set up a date/time with the commander for the final event.



Check out more news and entertainment about Kwaj life on the USAG-KA YouTube Channel, at <https://www.youtube.com/USArmyGarrisonKwajaleinAtoll>.

FOLLOW US AT THESE LOCATIONS

Facebook



Instagram



YouTube



USAG-KA



Kwajalein



MIA Project

NEVER FORGET.

<https://kwajaleinmiaproject.us/>

COMMUNITY CLASSIFIEDS

Submit Announcements to the Roller Channel and The Kwajalein Hourglass

OPEN CALL FOR ANNOUNCEMENTS
The island community is invited to submit listings for events and for sale items; announcements; department trainings; safety updates; public service messages; and thank-you messages.

Preparing Your Message

For questions about your messaging, please reach out to the USAG-KA Public Affairs Office at 480-4848.

Ads should always include a point of contact, phone number and/or email address.

Private parties, fundraisers and events requesting and/or accepting donations are typically not allowed for publication per AR 360-1. Fundraisers and support activities for private and schools-based organizations, scouting groups, civic clubs and other listings may be subject to a legal counsel review to determine their eligibility for publication.

Formatting Your Listings

It is recommended that graphical advertisements

and announcements intended for the Hourglass and the AFN Roller Channel be formatted as PowerPoint slides.

Graphic designers are asked to maintain a generous margin (.75-1-inch) around all sides and to size fonts no smaller than pt. 20.

If your Roller Channel advertisement requires a special expiration date, please note this for the Roller team in the body of your message.

Deadlines for Submissions

Send advertisements for the Kwajalein Hourglass and the AFN Roller Channel to kwajaleinhourglass@gov2x.com on Wednesdays by close of business/Thursday morning.

Roller Channel ads are accepted on a rolling basis by 4 p.m. for a mid-week and late-week update. Ads received after 4 p.m. will be loaded in the next update. Please ensure you submit ads in good time to ensure timely upload.

For more information, reach out to the USAG-KA Command team through the USAG-KA Facebook page.

ANNOUNCEMENTS

AFH Construction Is Ongoing. Nan, Inc. Construction is scheduled to commence the telecommunication scope of work for the Kwajalein Army Family Housing project in our community. Residents and commuters should be aware of possible changes in traffic patterns and to plan their routes accordingly. Nan, Inc. Construction is committed to minimizing any inconveniences, and we will strive to ensure a smooth and efficient construction process.

ArMA. Log in to ArMa, the Army Maintenance Application, to report issues for all buildings maintained by the Department of Public Works. Contact Public Works at 480-3550.

CAC Office. Before your visit to the Common Access Card Office, ensure all paperwork is completed by your human resources representative before making an appointment. Bring two forms of government-issued IDs with you. Walk-in appointments are welcome, but there may be a wait. CAC Office Hours, Bldg. 835, are Tuesday – Saturday, 8 a.m. – 4 p.m.; (Lunch: noon - 1 p.m.). Call 480-8496.

Demolition at the Capt. Louis S. Zamperini Dining Facility. Phase three of the Zamperini DFAC demo has begun and is projected to be finished March 2026 for the dining and serving area. Be careful around the dining facility during the phases.

Do Not Take Cultural Artifacts. It is illegal to remove cultural resources from the atoll. This includes any protected species, unexploded ordnance, WWII-era artifacts and ancient Marshallese artifacts. These resources are protected under U.S. federal and RMI law. Contact the Kwajalein Archaeology Office at 480-8867.



Contact the USAG-KA Sexual Harassment/ Assault Response and Prevention Victim Advocate

Chief Warrant Officer 2 Nate Elkins
SHARP Victim Advocate
Work: 480-0660 or 480-3421
USAG-KA SHARP Pager:
808-580-3241
DOD SAFE Helpline: 877-995-5247

Emergency Management. Visit the USAG-KA Emergency Management webpage, <https://home.army.mil/kwajalein/index.php/my-fort/EM>; 2) Click on "Mass Notification"; 3) Follow the registration instructions.

E-Wareness: It is each driver's responsibility to ensure vehicles are not leaking fluids other than air conditioning condensate. Call 911 to report spills and arrange with automotive for routine maintenance. Please call Environmental at 480-0722 with questions. Ej an ri-kator eo eddo non lolorjake bwe wa eo ejjab leak jabdwot oil ijelak in drennin air condition eo jen wa eo. Ne elon jabdwot leak/lutok in oil jen wa eo, Kiir 911 non report- e lutok eo. Ak kiir Environmental ilo 480-0722 non kajitok.

Fire Safety Tips. Some pets are chewers. Watch pets to make sure they don't chew through electrical cords. Pets are curious. They may bump into, turn on, or knock over cooking equipment. Keep pets away from stoves and countertops. Make sure pets are included in your family's fire evacuation plan. Build an evacuation kit for each pet in your household.

Flights. Please note that all flights are subject to change. For the latest update on your flights on United, ATI or Air Marshall Islands: ATI: 480-2169; AMI: 480-3469; United: 480-4852 or 1-800-UNITED1; Air Terminal Services: 480-2660; Flight Information Recording: 480-3589

UA Schedule Effective Now: Monday and Friday—UA 155 (HNL); Check-in 2 – 4:50 p.m.;

Wednesday—UA 133 (HNL); Check-in 2 – 4:15 p.m.; Tuesday and Saturday—UA 154 (GUM); Check-in 10:45 – 11:15 a.m.

FlyRoi Reservations. To schedule reservations and for correspondence related to flights, email LCVKwajaleinFlyRoi@versar.com.

How to dress in the RMI. Out of respect for the Marshallese culture, residents are asked to dress appropriately when visiting Ebeye, Third Island, or anywhere within Kwajalein Atoll. Women should wear clothing to cover shoulders and knees. None are permitted to wear shorts when visiting churches on Ebeye. Men should wear long slacks to church.

Kwaj Small Boat Marina hours are 7:30 a.m. – 6 p.m. Friday through Monday, and on holidays, excluding Thanksgiving and Christmas. Morning boat reservation times are from 7:30 a.m. – noon. Afternoon boat reservations are from 1 – 5 p.m.

Not Feeling Well? Call 480-2223 to make an appointment for a COVID-19 test, Tuesday through Saturday from 7:30 a.m. – 4:30 p.m. If you are not feeling well, please wear a mask when you are around others in the community.

Operational Security. See something, say something. All employees on USAG-KA are required to receive annual Threat Awareness and Reporting Program training provided by KRO; Reporting: Report suspicious activities to the Kwajalein Resident Office at 480-9859/1293/8006 at Bldg. 1163.

PCS & Vacation Tips. Notify the post office before leaving for 30 days or PCS'ing. Per DOD 4525.6-M, mail is only allowed to be held for 30 days with or without prior notice. Mail is considered unclaimed on day 31 and will be returned to the sender. Email the post office to authorize pick up for your mail and packages. When PCS'ing, provide a forwarding address. Contact James Smith with questions at 480-3461 and james.e.smith2295@army.mil.

Salon Walk-Ins. Surfside Salon Walk-In Appointments are available on Fridays from 1:30 - 6 p.m.

Smoking. USAG-KA, smoking is permitted in designated smoking areas only. Smoking and cigarette butt receptacles must be at least 50 feet from the entrance of facilities.

Taxi Service. Call 480-TAXI (8294) or 3341 to

book your ride at least 24 hours in advance of check-in time.

Millican Family Pool Hours. Closed for cleaning on Thursdays. Open noon to 5 p.m. Tuesdays, Wednesdays, Fridays and Saturdays. Open 11 a.m. to 5 p.m. Sundays and Mondays.

The NEC Testing Center Is Open to the Community - Giving you the head start you need to thrive! - Open Tuesday through Saturday by appointment
Authorized Pearson VUE Test Center. Schedule A test Today!
NEC testing Center, 480-4344, FN 1008-131
ACUITY International

Kwajalein / Roi Namur Licensing
Classes on Kwajalein are every Wednesday @0900 Marshallese
@1245 Expats (by appointment only as class side is limited)
Classes are in Bldg. 856 Rm 101, Vehicle Maintenance Compound
Roi classes every 2nd Friday in Bldg. C, timed based on flight schedule
No registration needed for Roi classes.
To register, send email to either of the following:
Audrey.Hughes@gov2x.com
Wilson.Kaisha@gov2x.com
...or stop by Bldg. 856, Rm 101

HELP WANTED

For employment with contractors
within the
U.S. Army Garrison - Kwajalein Atoll
please check
contractor company
websites
for employment opportunities.





Like and share @USArmyOPSEC

**OPSEC
IS NOT
RETROACTIVE.**

**THINK BEFORE
YOU SHARE
INFORMATION.
ONLINE AND OFFLINE.**

KWAJALEIN HOSPITAL

Helping the community navigate healthcare needs after-hours with RN4U NURSE LINE:

RN4U NURSE LINE:
480-RN4U(7648)



What is RN4U?

RN4U is an after-hours nurse line designed to promote patient safety and appropriate use of emergency services. The on-call nurse is available to assist in determining the level of care needed.

When is RN4U After-Hours Nurse Line available?

Tuesdays - Saturday from 1630-0730,
Sundays & Mondays: 24 hours
(excluding Garrison Holidays)



For medical emergencies please dial 9-1-1 immediately

For non-urgent clinic questions during normal business hours,
please call the hospital at 480-2223



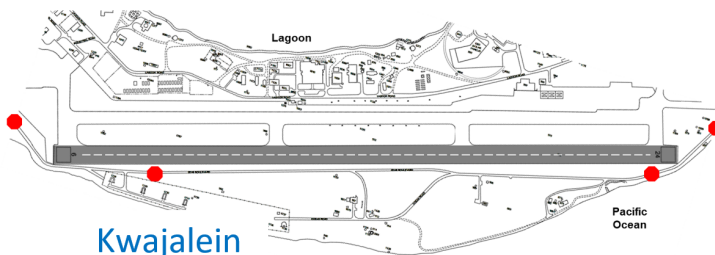
KWAJALEIN & ROI NAMUR,

STOP FOR AIRCRAFT!!



Please remember to stop and look both ways for aircraft on:
Zeus Blvd., Ocean Rd., Perimeter Rd., Pandanus Rd., Eleanor
Wilson Rd.

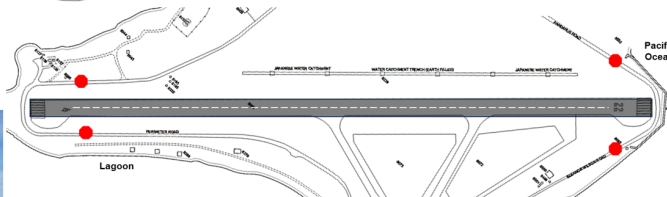
**If aircraft are on approach or taking off, you must hold your
position and wait!**



Kwajalein



Roi Namur



Stop at designated signs and look for aircraft landing or taking off. If you see an aircraft, hold your position at the stop sign and wait until the aircraft has landed or departed before moving.

**PUBLIC NOTIFICATION
IMPORTANT INFORMATION ABOUT YOUR DRINKING WATER**

Kwajalein Drinking Water Total Trihalomethanes (TTHMs) Maximum Contaminant Level (MCL) Exceedance

The Kwajalein drinking water system recently exceeded a drinking water standard. This incident is not an emergency. However, public notification is required to meet the requirement in the USAKA Environmental Standards (UES). The information below is a summary of cause of non-compliance and actions taken to ensure drinking water quality.

- Testing results from the second quarter of fiscal year 2025 (2QFY25; January – March 2025) show the Kwajalein Island drinking water system exceeded the standard or MCL, for the TTHMs locational running annual average (LRAA) at three locations.
- The MCL is determined by averaging the results of samples collected at each sampling location for the past four quarters. The MCL for TTHM LRAA is 0.080 mg/L.
- The LRAA concentrations exceeded the standard at 0.081 mg/L, 0.082 mg/L, and 0.092 mg/L.

What should I do?

- Nothing. You do not need to boil your water or take other corrective actions.
- If you have any specific health concerns, consult your doctor.

What does this mean?

- This is not an emergency!
- TTHMs are four volatile organic chemicals which form when disinfectants, such as chlorine, react with natural organic matter in the water.
 - Per the Environmental Protection Agency, some people who drink water containing trihalomethanes in excess of the MCL over many years may experience problems with their liver, kidney, or central nervous system, and an increased risk of cancer.
 - Short term exposure has not been shown to lead to adverse health effects.
 - Potential exposure to Kwajalein personnel is considered short term due to the limited time the MCL has been exceeded.

What is being done?

- The Kwajalein Island water system includes a Granular Activated Carbon (GAC) filter system, which treats the entire Kwajalein drinking water supply to remove naturally occurring organic compounds before the water is disinfected with chlorine reducing the resulting TTHMs to minimal levels.
- An investigation revealed an unexpected degradation of the adsorption capability of the GAC system.
- Scheduled replacement of the spent carbon in the GAC system is currently in progress.

For questions, please contact Environmental Services at 480-0722.



MELELE KO RAUROK KIN DREN IN IDRAAK EO

Jonan Total Trihalomethanes (TTHMs) ilo dren in idraak eo ilo Kwajalein ekar le jen jonak eo emoj an kien karoke (MCL)

Dren in idrak eo ion Kwajalein emoj an la ilon in standard eo an dren in idrak. Joraan in ejjab juon idin. Botab, karon jukjuk in bed in ej juon requirement ilo USAKA Environmental Standards (UES) me ej aikuj komane. Ilal ej melele ko ikijien likjab in im ta buntan ko emoj ejaki non bobrae likjab in.

- Result in taaj ko jen kuwata 2 eo an iio in 2025 (2QFY25; January - March 2025) ej kwalok ke dren in idrak eo ion Kwajalein emoj an la ilon in kakien eo, ak jonok ko (MCL non TTHM locational running annual average (LRAA) at three locations..
- Jonok eo, ak MCL non TTHMs LRAA ej 0.080 mg/L eo me ej walok jen sample ko emoj boki jen jikin ebok sample ko jen kuwata ko 4 remootlok. Ilo MCL non TTHM LRAA ej 0.080 mg/L.
- Jonan level in LRAA emoj an tobar jonak eo emoj korake ej 0.081 mg/L, 0.082 mg/L, im 0.092 mg/L..

Ta eo kwoj aikuj in komane?

- Ejelok men kwoj aikuj komane. Kwojjab aikuj boil i dren eo ak komane jabdrewot.
- Ne kwoj loe ke ewor jabdrewot naninmij ejelt ejmour, kebaak tokto.

Ta melele in?

- Ejjab emergency ak menin idin.
- TTHM ej emen volatile organic chemicals ko im rej walok ne jej kojerbal jerajko non karreo dren in idraak,
 - o Jen Environmental Protection Agency, jet armij ro rar idraak dren in bedbed ioon trihalomethanes ekoba MCL ilo elon yio remaron melele lok kin jorren kein nan aj im kidney ak naninmej in cancer.
 - o Ilo to kadru in ejannin wor joraan ewalok ejelet ejmour.
 - o Kakolkol ko rej walok non armej in Kwajalein ej bed wot ilo ien eo ekadru ilo jokjok in emoj an MCL eo ela jen jonak ko..

Te eo emoj komane?

- Jikin dren eo ioon Kwajalein in ej kakobaik GAC jikin liklik eo, eo im ej liklik im kare-oik aolep drenin draak ioon Kwajalein in im bareinwot jabalak im jolok aolep kij ko mokta jen an dren ko liklik kon chlorine nan kadriklok TTHMs nan jonon eo edrik.
- Ilo etale im katak kake ej kwalok wawein ko ma rejab alikar ikijeen driklok in an GAC system eo baur men ko.
- Scheduled in koman oktak nan spent eo ilo GAC system eo ej bok jikin kio maan lak

Ne elon am kajitok, jouj im kurlok Environmental Services ilo 480-0722.

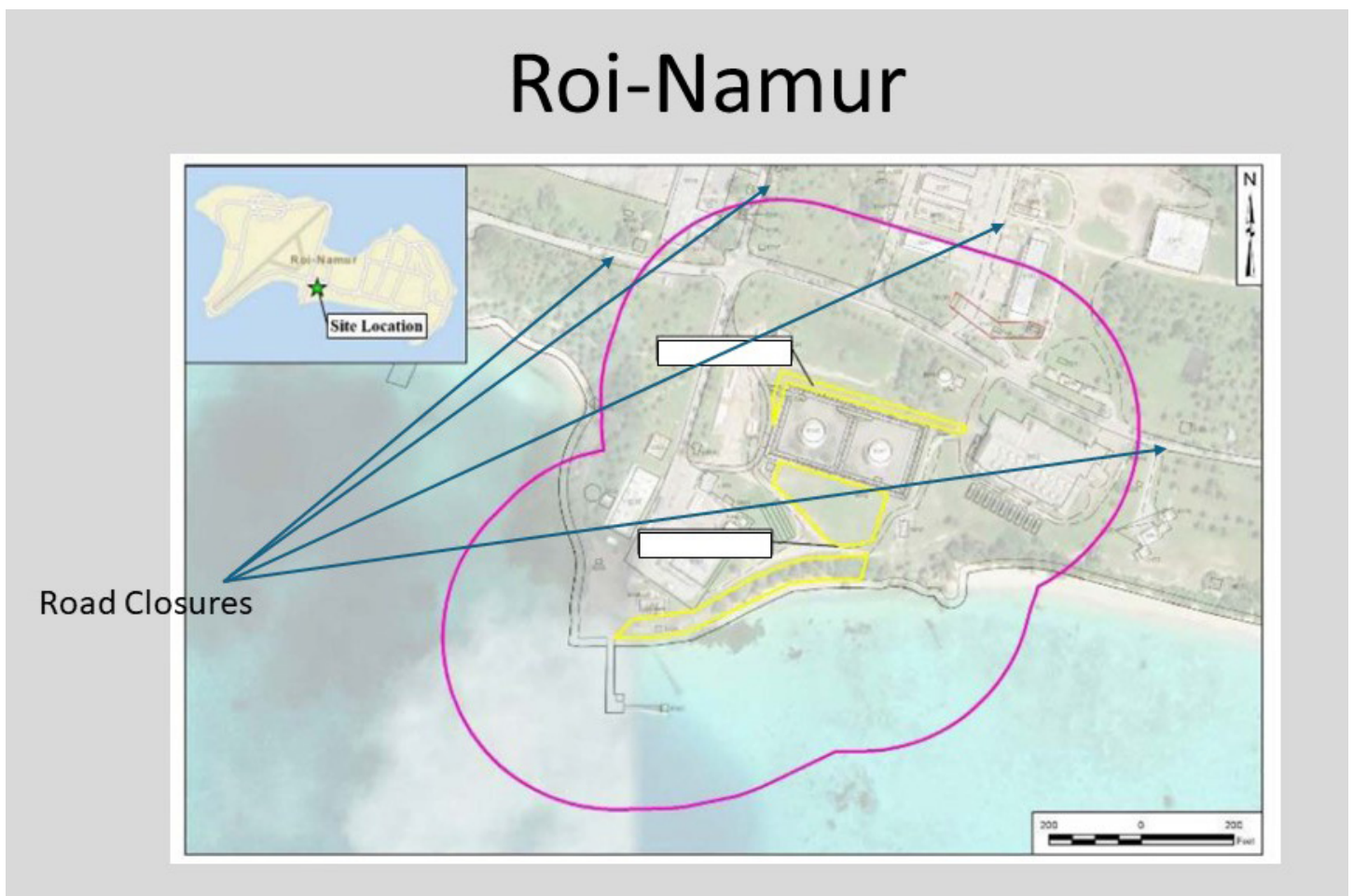


UXO CLEARING FOR CONSTRUCTION SUPPORT

On Roi-Namur Beginning 21 February Operations will be conducted at night from 2000-0430 Monday-Friday. The following maps show Road Closures, Exclusion Zones, & Operations Overview

Roi-Namur POL/AST

- Construction operations anticipated to start 21 February
- Operations will be conducted at night from 2000-0430 Monday-Friday
- UXO Techs will conduct clearance operations in identified areas
- Barricades will be placed to signal all pedestrians and vehicles to use alternate routes
- Please avoid traveling or traversing in the indicated areas without a UXO Escort





**American
Red Cross**

Service to the Armed Forces

Volunteer Opportunity at Kwajalein Atoll

Join the American Red Cross and help bring our Services and Programs to the Kwajalein Atoll community!

Online & Virtual Training Provided

No experience needed!

We provide all necessary training. Just bring your passion and commitment to helping others!

Contact **Alana Wilson** at alana.wilson@redcross.org

Let's work together to build a more prepared and resilient community.



Remember the 3-R's of UXO Safety!



RECOGNIZE



RETREAT



REPORT

Unexploded ordnance are munitions that fail to detonate during live fire training. They are **extremely dangerous** and could explode if tampered with, even though the Kwajalein ordnance is 80-years-old.

NEVER touch UXO and report the location of **ANY** suspected UXO to the UXO Team **IMMEDIATELY** at:

Phone: 480-1550/1433

Email: Darren.r.Wheeldon.ctr@army.mil



CINEMA

Now Showing at the Yuk Theater



SUNDAY, JUNE 1
"Monkey Man"
(2024) (R) 121 min.

SATURDAY, JUNE 7
"Coco" (2017)
(PG) 1105 min.

SUNDAY, JUNE 8
"Deadpool and Wolverine" (2024)
(R) 128 min.

SATURDAY, JUNE 14
"DC – League of Super Pets"
(2022)
(PG) 105 min.

SUNDAY, JUNE 15
"Scream" (1996)
(R) 111 min.

SATURDAY, JUNE 21
"Lightyear" (2022)
(PG) 100 min.

SUNDAY, JUNE 22
"The Black Phone" (2021)
(R) 103 min.

SATURDAY, JUNE 28
"Minions: The Rise of Gru"
(2022)
(PG) 87 min.

SUNDAY, JUNE 29
"The Shining" (1980)
(R) 146 min.



All showtimes start at 7:30 p.m.



E-wareness: Stormwater Sampling and Analysis



Stormwater samples are collected every year on Kwajalein to monitor the quality of water going into the ocean and lagoon.

ISCO samplers are staged at selected storm drain locations. Please do not disturb them. Call V2X Environmental if you have any questions. 480-0722



Aolep yio rej ebok sample in Stormwater/Dren in Wot ion Kwajalein non etale jonan dren eo ej driwojlak ilo lik im iaar.

Ewor jet ISCO sampler ak kein jerbal ko rej jutak itorerein drain-out ko. Joij im jab jibwi ak komakiti. Ne ewor am kajitok kaki, call e lok V2X Environmental ilo 480-0722.

WEEKLY TROPICAL WEATHER THREAT OUTLOOK

RTS WEATHER STATION STAFF

Discussion:

At about the mid-point in June, we have recorded 4.22 inches of rain, which is 0.50 inches below normal for the month. So far in 2025, we have only received 17.10 inches of precipitation, which is 11.31 inches below normal for the year. On the scale of Do to D4, Kwajalein Atoll is in Moderate Drought D1, which is a general improvement. Conditions are becoming particularly bad in the northern Ratak Chain to our east, which is currently suffering with Extreme Drought D3. With that said, we are moving into a wetter phase for Kwajalein Atoll. There will be increased shower coverage starting on the second half of tomorrow through the first half of Saturday with some minor troughing in the trade-wind flow (ENE-E-ESE direction with time). We are also looking at the increased shower coverage for the atoll starting again on Monday, and continuing into the first part of the workweek. Now that we are in the wet season, it will be rare for a day to go by without at least part of the atoll receiving some kind of

shower activity. There will be an augmented thunderstorm risk on Friday night into the first half of Saturday, but the more significant risk will be Monday night through Tuesday with the troughing in the trade-wind flow. No thunderstorm days occurred over the past seven days. A thunderstorm day is defined as an "in situ" lightning strike within five miles of the weather station or thunder heard. The Madden-Julian Oscillation (MJO) is more organized, and assisting shower development in our part of the Pacific, when the Intertropical Convergence Zone (ITCZ) is nearby. The El Nino Southern Oscillation (ENSO) is in ENSO-neutral conditions. With the end of La Nina, the transition to ENSO-neutral favors increased shower coverage, entering the rainy season. Sea surface temperatures (SST) in the central Pacific between the RMI and the Date Line are now at about normal. Besides increased rainfall, these warming near normal SSTs tend to favor tropical cyclone development, but the RMI is still outside its climatological peak tropical cyclone season, thus little threat is expected for the rest of June.

Tropical Cyclones:

No significant tropical cyclone activity expected to affect anywhere in Micronesia, the Mariana Islands, Wake Island or Hawai'i. We are now in the tropical cyclone season for the western Pacific, though not quite at its peak. The MJO's current phase acts to promote tropical cyclone development, so will keep an eye on things more at this time.

Damaging West Winds / Westerly Swell:

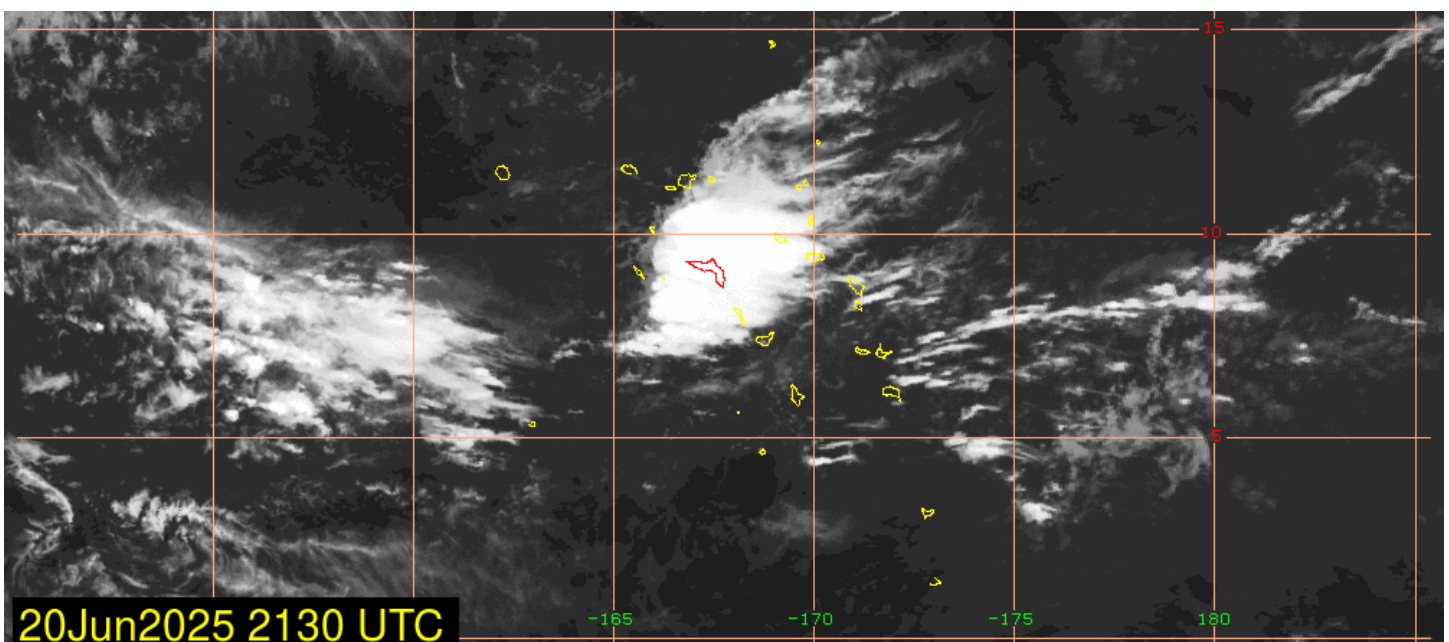
None expected. Micronesia is northeast trade wind dominant.

Swell / Tide Inundation for Kwajalein Atoll and Wake Island:

The waning half-moon was yesterday, becoming a new-moon on the 25th. We will see our tides in their spring tide greater range phase with high tides just under 5 feet from the 25th through the morning of the 27th. Winds will be generally out of the ENE mostly in the mid-teens (knots), coming down a bit to the low teens on early Sunday morning and Tuesday. There will be gusty winds possible near any heavy showers

that occur, particularly if those showers occur off to our immediate east. A Small Craft Advisory (SCA) may be issued for short periods of time on the open lagoon and ocean during instances of gusty outflow. High Surf Advisory (HSA) conditions are not expected for the next seven days.

Purpose: This weekly briefing is delivered Thursday mornings to island leadership. The intention of this briefing is to provide situational awareness of weather events that may interrupt operations and transportation around Kwajalein, to/from Hawaii and Guam, and in the Wake vicinity. The main threat assessed in this brief is existing and potential development of tropical cyclone activity. This brief also provides an outlook of abnormal winds, sea state, and precipitation guidance for next 7 days around the Kwajalein Atoll. The distribution list will also receive updates on any developing tropical cyclone activity in the Kwajalein region that occur between the weekly outlook product. ▼





25-26 KINDERGARTEN ENROLLMENT

CALL
480-3601
for an
online
enrollment
form link



**SCAN
ME**

WEATHER

RTS WEATHER STATION STAFF

WEATHER DISCUSSION

A fortified Intertropical Convergence Zone (ITCZ) and east to west transiting atmospheric waves will mean a considerably wetter weekend than last weekend. It starts with greater shower coverage on Saturday morning with a bit of lull in the afternoon, then continued troughing of the trade-wind flow for Sunday and Monday. These will not be all day rainy events for the atoll, but there will be periods of heavy showers and a possible thunderstorm, as the vertical column of the atmosphere will be conducive to their formation. The winds will remain in the low to mid-teens, as a well-positioned sub-

tropical ridge north of Hawai'i will maintain a tighter surface pressure gradient, even when the ITCZ draws closer to Kwajalein from the south. Expect the winds to come down to the upper single digits when they veer to the east-southeast, as a result of a more relaxed pressure gradient with that direction. As we move past the mid-point of June, we start to enter the heart of the wet season (Ellap Wot) for the central RMI, which means rarely will a day go by in which at least part of the atoll does not receive any shower activity. It also means that our trade-winds will come down in intensity overall. The only exception to this wind rule, is when heavy showers or thunderstorms are

off to our immediate east, at which time, strong gusty outflow winds are possible for brief periods of five to fifteen minutes.

SATURDAY

Mostly cloudy early, then becoming partly sunny with isolated showers waning to stray showers for the afternoon and increased sun. Winds E-ESE at 7-12 knots, becoming ENE-E at 9-14 knots in the afternoon with higher gusts near showers.

SUNDAY

Mostly cloudy to partly sunny at times with widely scattered showers, decreasing to isolated showers at times and a possible stray thunderstorm. Winds ENE-E at 11-16 knots and gusty winds possible near heavy

showers.

MONDAY

Mostly cloudy to partly sunny with scattered showers and possible stray thunderstorms. Winds ENE-ESE at 9-14 knots with gusty winds close to 30 knots possible near heavy showers and or thunderstorms, par-

ticularly when they are off to the immediate east.

NEXT WEEK

Expect an active pattern to continue into the workweek for the wetter conditions with near doldrum winds possible on Friday. ☒

SUN-MOON-TIDES				
	SUNRISE SUNSET	MOONRISE MOONSET	HIGH TIDE	LOW TIDE
SATURDAY	6:32 a.m. 7:10 p.m.	2:07 a.m. 2:49 p.m.	12:13 a.m. 3.4' 12:28 p.m. 3.1'	6:32 a.m. 0.9' 6:40 p.m. 0.5'
SUNDAY	6:32 a.m. 7:10 p.m.	2:56 a.m. 3:47 p.m.	1:18 a.m. 3.8' 1:41 p.m. 3.1'	7:48 a.m. 0.6' 7:40 p.m. 0.4'
MONDAY	6:32 a.m. 7:10 p.m.	3:49 a.m. 4:50 p.m.	2:15 a.m. 4.2' 2:42 p.m. 3.2'	8:49 a.m. 0.2' 8:33 p.m. 0.2'
JUNE 24	6:32 a.m. 7:11 p.m.	4:48 a.m. 5:56 p.m.	3:05 a.m. 4.5' 3:35 p.m. 3.3'	9:41 a.m. -0.2' 9:22 p.m. 0.0'

FOR QUESTIONS ABOUT ISLAND LIFE AND ARMY REGULATIONS, PLEASE CALL THE COMMANDER'S HOTLINE AT 480-1098.

Until Next Week!

